

LYNCH ESTATE ELEMENTS



WEATHERVANES



OPERATION

- Install weathervane on supplied steel shaft which is mounted perfectly plumb.
- Single ball bearing allows for weathervane to rotate freely.

MAINTENANCE

- DO NOT lubricate or grease stainless steel shaft or ball bearing.
- If the shaft is perfectly plumb, the weathervane will rotate freely.
- Weathervane requires no future maintenance, unless shaft becomes out of plumb.

WEATHERVANE MOUNTING INSTRUCTIONS

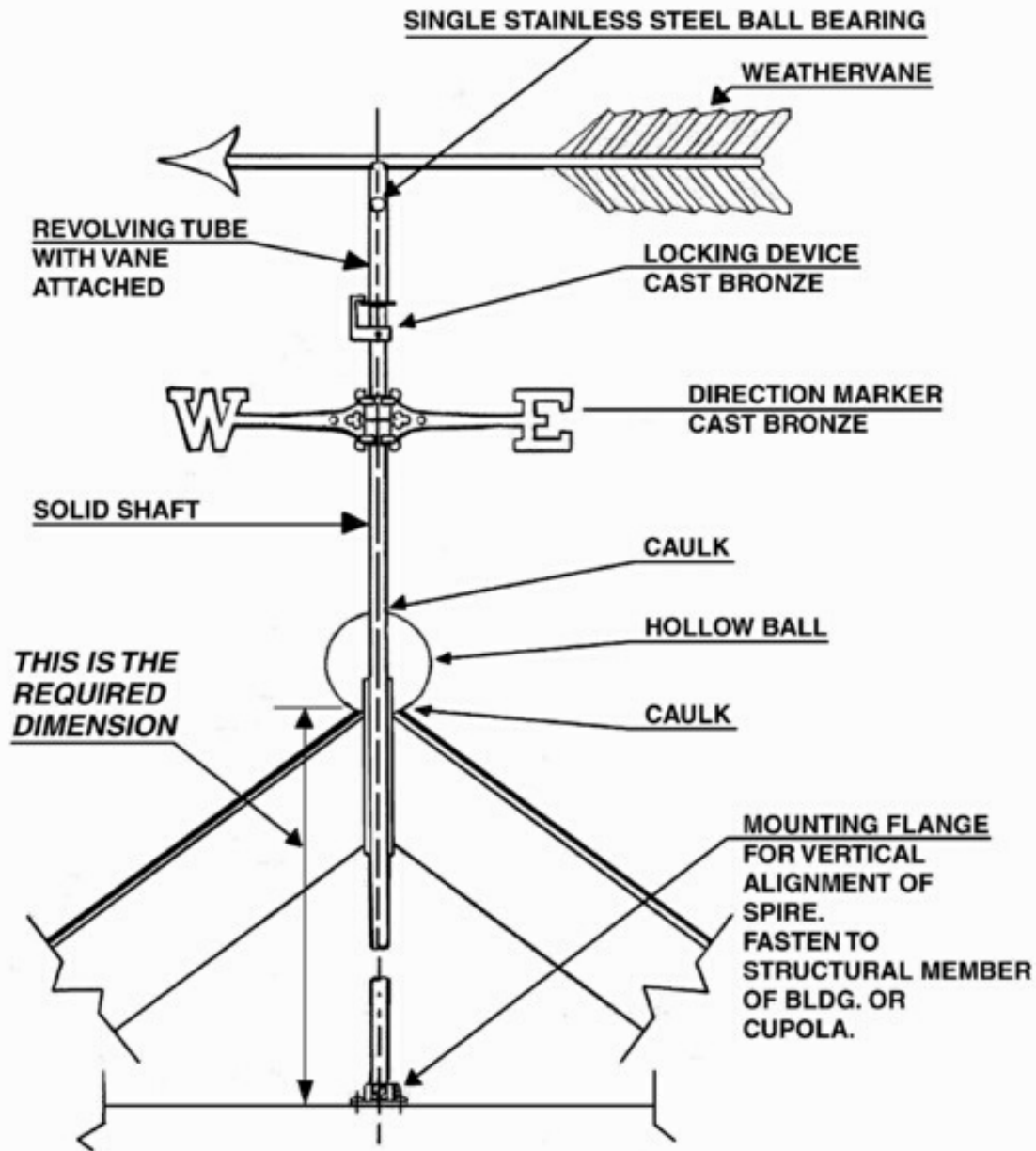
1. Locate position that weathervane is to be installed. Provide a vertical hole clear through to inside of structure equal to the diameter of the shaft.
2. Insert shaft through the hole until it strikes the first structural member below this hole. (If absent, a horizontal structural member may be installed, on average, 24" to 36" below the point of entry through the roof.)
3. Attach mounting flange to bottom of shaft. Plumb shaft. Attach the flange to the horizontal structural member. Tighten set screws.
4. Seal the shaft to the top of the cupola or roof with appropriate sealant. Slide hollow ball down shaft till it rests on the cupola or roof.
5. Slide the NSEW indicators down the shaft to a point midway between the weathervane and the ball and secure with the provided set screws.
6. Place ball bearing on top of the shaft and slide vane together with the locking device down onto the shaft. Tighten the set screw on the locking device making sure that it doesn't interfere with the operation of the vane.



LYNCH ESTATE ELEMENTS



WEATHERVANE ANCHORING INSTRUCTIONS



No. 3827
SCHEMATIC DRAWING