



KENNETH LYNCH
& SONS
Est. 1927

FLORENTINE CLASSICS
Estate Collection

Time is the longest distance between two places

—TENNESSEE WILLIAMS

Williams' quote captures a curious aspect of time—that it unfolds as a journey. Nearly a century ago, a young man who had a special talent with his hands and a hammer dedicated his life to creating the highest quality ornamental metal work.



He was Kenneth Lynch, my grandfather. Through his dedication, he set Kenneth Lynch & Sons down a focused path melding artistry with craftsmanship.

On this decades-long journey with many choices along the way, Kenneth Lynch & Sons has been shaped by our convictions—Kenneth's, my father's and my own. I think it's natural in life that we occasionally look back to confirm that we have made the right decisions. Time is, after all, the ultimate judge. When I think about our accomplishments and our reputation, I can say, yes, the three of us chose the right paths, decade after decade.

At Kenneth Lynch & Sons, we create items in limited quantities—not produced in mass. We adhere to signature designs, not trends. Those decisions guide the design principles of Florentine Classics today. What you will see in this catalog is the result of three generations of purposeful choice. Our work, without doubt, is crafted by time.

As landscape architects, designers, and discerning home owners you create settings to briefly escape life's demands. You manage to slow time down long enough to live in the moment. Today, that's quite an achievement. So, the joy and satisfaction you bring to your clients, family or friends is also crafted by time.

I hope you find as much joy designing with Florentine Classics as we have producing the line.

Maria Lynch Dumoulin

Maria Lynch Dumoulin
PRESIDENT/OWNER



FC25 Grand Chair and Sofa | FC10 Neoclassical Chair | FC30 Coffee Table

TABLE OF CONTENTS

Our Vision	2	Deep Seating	13
The Craft	5	Tables	17
Settees	6	Customization Options.....	20
Chairs	9	Estate Elements.....	24



FC12 Star and Dolphin Settee alongside Estate Elements from our collection

CRAFTED *by time*

An elegant blend of timeless artistry and impeccable craftsmanship, our Florentine Classics furniture carries fine European traditions forward.

This line of furnishings is thoughtfully proportioned and designed with graceful details, adding subtle visual and tactile richness. Each piece is crafted by hand in-house by our own skilled artisans. They form, hammer, weld and finish one piece at a time, applying decades of experience that is evident from every angle.

Our vision with Florentine Classics is to offer you, our design partner, elements that transform outdoor spaces into peaceful retreats. Whether your next project is a garden, patio, veranda or porch, you will discover inspired seating and table choices across the Florentine Classics collection.

The pieces here illustrate our commitment to melding artistry with craftsmanship, transcending trends to bring lasting substance. In the presence of our furnishings, you'll understand what we mean when we say we think in terms of decades, not seasons.

With Florentine Classics, you will envision and create beautiful spaces for clients where they will make the most of time with family and friends—or just a quiet moment alone. Together, we can help your clients fully appreciate the satisfaction of being home, today, tomorrow, always.



Kenneth Lynch at his forge, circa 1951

TAILORED *to your vision*



FC20 Star and Dolphin Chair | FC60 Filigree Table | FC27 Dolphin Grand Chair | FC26 Star Ottoman | FC82 Dolphin Chaise Lounge

BEAUTIFUL
materials that endure



FC10 Neoclassical Chair | FC74 Neoclassical Dining Table

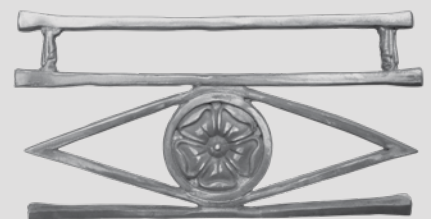
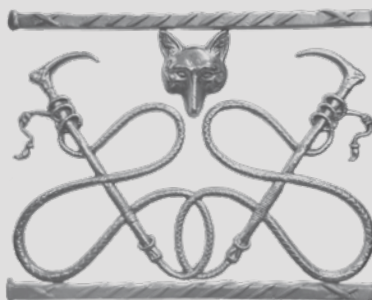
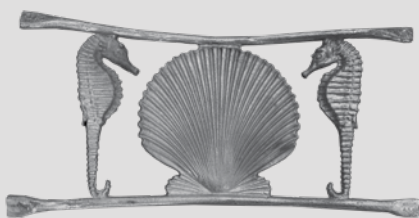
A PROCESS *shaped by heritage*

In a world where it seems that there are never enough moments in the day, we create our furnishings and statuary to stand the test of time—both aesthetically and functionally.

For Florentine Classics, this begins with time-honored designs created in the highest-quality materials—high-strength aluminum alloy castings and lumber sourced for durability and beauty.

Before our skilled craftsmen do their work, we invite you to add your personal touch through our customizations

program. Page 20 of this catalog specifies some of the options available, but please don't hesitate to speak with us about your unique needs. Our aim is to help you create one-of-a-kind spaces with our furnishings and estate elements.



These seat backs, seen in their raw state, are just a few of the customizations available.

seats



Star and Dolphin Double, slatted
FC52 | 43W X 23D X 31H



Star and Dolphin Double, filigree
FC12 | 43W X 23D X 31H



Walden Double
FC43 | 43W X 23D X 32H



Neoclassical Double
FC22 | 42W X 23D X 32H



Star and Dolphin Triple, slatted
FC24 | 62W X 23D X 31H



Tulip Basket Triple
FC18-S | 62W X 23D X 32H



Seahorse and Shell Triple
FC16 | 62.5W X 25.5D X 31H



Fox Hunt
FC33 | 62W X 23D X 32H

DESIGN TIP

All seats can be created in our filigree or slatted pattern, or with your choice of wood species.

FLUID FUNCTION

meets timeless beauty



A PLACE
for calm



chairs

DESIGN TIP

Slatted chairs require cushions.



Neoclassical, cast seat
FC06 | 21W X 23D X 32H



Neoclassical
FC10 | 22W X 23D X 32H



Neoclassical Side
FC11 | 22W X 23D X 32H



Star and Dolphin Side, filigree
FC07 | 22W X 23D X 31H



Neoclassical, filigree
FC10 | 22W X 23D X 32H



Neoclassical Bar Stool
FC17 | 19W X 20D X 41.5H,
26H SEAT



Fabric can be chosen from our selection, or designers can provide their own fabric.



Star and Dolphin, filigree
FC20 | 22W X 23D X 31H



Star and Dolphin, slatted
FC09 | 22W X 23D X 31H



Grand Dining
FC73 | 22W X 23.5D X 34.25H



FIND MORE INFO on select customization options on page 20.

chairs



Lattice Back, cast seat
FC37 | 23W X 23D X 32H



Lattice Sleigh Arm
FC40 | 21W X 23D X 31H



Tulip Basket
FC18 | 22W X 23D X 32H



Walden, filigree
FC42 | 22W X 23D X 32H



Seahorse and Shell,
filigree
FC15 | 22W X 25.5D X 31H



Tudor Rosette
FC18 | 22W X 23D X 32H



Regency Shell
FC39 | 22W X 23D X 32H



Squirrel and Acorn
FC38 | 22W X 23D X 31H

CUSTOMIZATION POSSIBILITIES

EACH PIECE OF FURNITURE IS MADE BY HAND, one at a time. This allows us to help designers and homeowners realize their dreams through customizable elements.

Learn how we can customize your unique pieces on page 20. Then speak to us about your project.





FC20 Star and Dolphin Chair

THE ART
of hand detailing

THE OCCASION

to relax



FOREGROUND FC25 Grand Chairs and Sofa, FC30 Coffee Table | BACKGROUND FC31 Rectangular Dining Table, FC10 Neoclassical Chair

deep seating



Neoclassical Grand Chair, star
FC25 | 25W X 32D X 36H, SEAT 17.5H

DESIGN TIP

Our deep seating offers generous proportions and can be customized as you see fit. This allows you to create a wide range of design-matched pieces for specific spaces. In essence, you can create a bespoke collection perfectly in tune with its surroundings.

FC85 Neoclassical Extra Deep Grand Chair
25W X 38D X 36H, SEAT 17.5H



Neoclassical Grand Chair, circle
FC25 | 25W X 32D X 36H, SEAT 17.5H



Dolphin Grand Chair
FC27 | 25W X 31D X 36H, SEAT 17.5H



Squirrel and Acorn Grand Chair
FC41 | 25W X 31D X 36H, SEAT 17.5H



Classic Ottoman, circle
FC26 | 25W X 20D X 17H



Classic Ottoman, star
FC26 | 25W X 20D X 17H



Walden Ottoman
FC45 | 17W X 17D X 17H

deep seating



SIT BACK, SINK IN . . .

DEEP SEATING AVAILABLE in two, three, or four-place widths, or with extended depth to create an inviting daybed, shown here.

FC85 Neoclassical Daybed | 102W X 42D X 36H



Neoclassical Grand Sofa,
three seats

FC25-S-71 | 71W X 32D X 36H,
SEAT 17.5H



Squirrel and Acorn Grand Sofa,
three seats

FC41-S-71 | 71W X 31D X 36H, SEAT 17.5H



Dolphin Grand Sofa,
four seats

FC27-S-94 | 94W X 31D X 36H, SEAT 17.5H

TAKE IT ALL IN

Tailor the ornamentation
of your chaise lounge to
complement your outdoor
furnishings.



FC80 Chaise Lounge | 83L X 28W X 15H



FC82 Star and Dolphin Chaise Lounge | 78L X 28W X 16.75H

exceptional
CRAFTSMANSHIP

A SPACE

to reclaim time



FC74 Neoclassical Dining Table | FC37 Lattice Back Chair

tables



Acanthus Café
FC29 | 54DIA X 39DIA BASE X 27.5H

DESIGN TIP

KNOWING YOUR PREFERENCES, we can customize our table's ornamentation, number of legs, leg dimensions and style—or even add a center support pedestal.



Circular Coffee
FC48 | 42DIA X 18H



Circular Dining
FC75 | 36DIA X 29.5H



Circular Dining
FC75 | 54DIA X 29.5H



Small Filigree Dining
FC50 | 49DIA X 28H



Medium Filigree Dining
FC60 | 60DIA X 29.5H



Neoclassical Dining
FC74 | 36DIA X 39DIA BASE X 28.25H

tables



Grand Coffee, rectangular
FC30 | 36W X 36L X 18H



Grand Dining
FC31 | 48W X 48L X 29H



Console with shelf
FC32 | 60W X 18L X 34.75H



Filigree Side
FC19 | 14.5W X 18L X 16.5H



Filigree Coffee
FC28 | 18.25W X 27.5L X 16.5H



Walden Side
FC45 | 17W X 17L X 17H

WELCOME MORE FRIENDS

AN OUTDOOR SPACE BECOMES AN INVITING RETREAT where family and guests gather for meals and conversation. With a variety of table shapes, styles and finish options, we can help you find one that becomes the perfect spot for long afternoons together.



FC49 Rectangular Filigree Dining | 35W X 84L X 29.5H



FC27 Dolphin Grand Chair and Sofa | FC30 Coffee Table

creating
TRADITIONS

CUSTOMIZED

for distinctive settings



Like the best moments in life, Florentine Classics are made one at a time. This allows us to offer choice of finish, arm style, seat back, dimensions and more. We create what no one else can, so you can design gardens like no other.

While you don't have to customize any of our pieces, this exclusive service enables designers and clients to collaborate with Kenneth Lynch & Sons' artisans. Together, we can begin with a classic piece and change the elements to suit your desired mood.

Choose from six different customization options—detailed on the next three pages—from selecting a finish to creating completely bespoke pieces of furniture. Think of us as your personal foundry.

MAKE IT YOURS *customization options*

level

1

Choose your finish color or bring your own cushion upholstery. You can also add special touches, like contrast welting.

FINISH

All of our aluminum furniture is hand-detailed before the final painted finish is applied. The items are cleaned, then primed and painted with a durable outdoor enamel paint. If selected, they are then ready for our premium hand-applied glazes. The glazed finishes are topped with a clear lacquer in a satin finish.

OUR STANDARD FINISH OPTIONS INCLUDE Millennium Black, White, Antique Black, Antique Lead, Grecian Blue and Pompeian Green. We invite your finish requests—the possibilities are endless.



UPHOLSTERY

Our cushions are customized to the dimensions and contours of our furniture. All cushions include Dacron-wrapped EZ-Dri foam, zippers for removal and Velcro tabs for a polished look. We offer a selection of Sunbrella fabrics as our standard, and welcome you to bring your own materials, trim, contrast welting and surface-applied tape trim to make the design uniquely yours. Our team will provide you with yardage requirements.

BELOW ARE SOME OF OUR CLIENT-FAVORITE UPHOLSTERY CUSTOMIZATIONS:



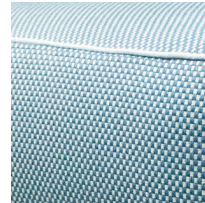
Self welting



Contrast welting



Velcro tab



Customer-supplied fabric



Surface-applied tape trim

level

2

Customize your table dimensions or incorporate a distinctive tabletop material such as stone. Add a special touch with unique motifs in table or grand chair skirts.

SIZE

Your table will be made to order. Our team can recommend dimensions to fill your space perfectly and work well with your selected chair style.



ORNAMENTATION

Our classic star and neoclassical circle motifs are just the start—choose your favorite designs to add a special touch.



options

level
3

Chairs offer many options to set a tone of the pieces themselves as well as the space. Since most arms and backrests are interchangeable, you can create distinct personalities. Your choice of backrest will dictate the width of the chair. Then, choose a seat type—filigree, slatted or wood.

ARMS AND SEATS



Sleigh arm with cast seat



Squirrel with nut arm with wood slat seat



Dolphin arm with filigree seat



Neoclassical arm with slat seat



Seahorse arm with filigree seat



SEAT BACKS

FROM LEFT TO RIGHT: Neoclassical, Regency, Lattice and Walden backs. Find more options on page 5.

Speak with us to explore a larger selection of seating options.

level
4

Our craftsmen can customize chair sizes to your space—bistro height, extra narrow or double wide. Want to add a further measure of grandne to our deep grand and dining chairs? We can provide inspiration.



An armless chair with standard cast seat and hand-formed custom backrest with simple star motif.



A grand chair modified with extra-deep seating.



Neoclassical chair to fit a client's space.

level
5

Our designers want to understand your project needs and likely have ideas to bring your vision to life without creating new patterns or adding time to your project. A library of castings allows custom pieces to be created based on existing ornaments. This allows us to re-imagine a sofa from lineal to curved or as a custom-sized sectional.



Bar cart created with table legs, added wheels and frames for glass shelves.



Bar stool created from console table legs.

Elliptical shaped extra-deep seating, designed for Richard Keith Langham, Inc.



FC27 Dolphin Extra-Deep Sofa, 14'W x 5'D Overall, 38D Seat | FC48 Coffee Table, 48DIA

level
6

Create a completely unique piece—beginning with your vision and a clean slate.

A BLANK CANVAS

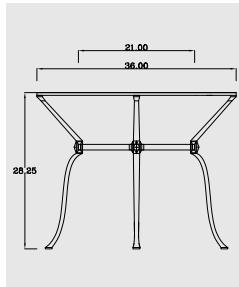
We understand that some projects warrant a completely new creation. Working from your design, our team can create new patterns for your unique furnishing. Many of our designs result from client collaborations, and with permission provided, we happily add these products to our line.



The inspiration



Proposal sketch



2-D mechanical drawing



3-D rendering



The finished table

ESTATE *elements*

Kenneth Lynch & Sons has long been known as a leading designer and fabricator of fine ornamental metalwork. That tradition continues today, with methods and commitment passed down for generations.

Our library of available designs contains hundreds of objects to complement gardens, pathways, patios and other outdoor living spaces.





100 YEARS AGO

100 years from now



KENNETH LYNCH

& SONS

Est. 1927

