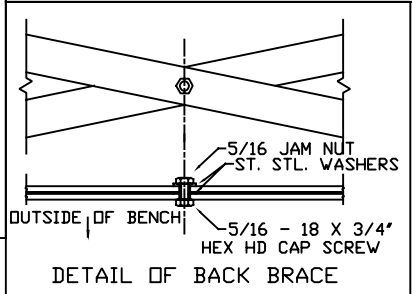
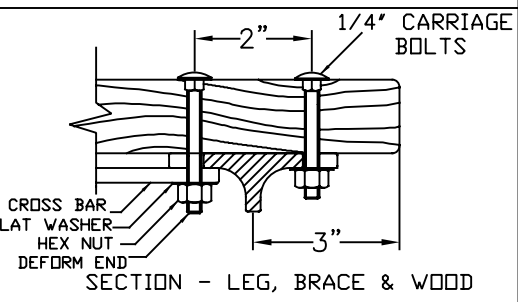
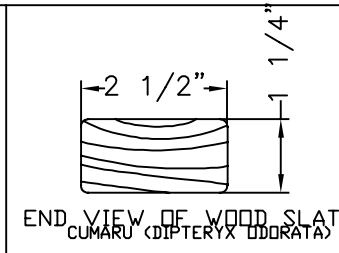
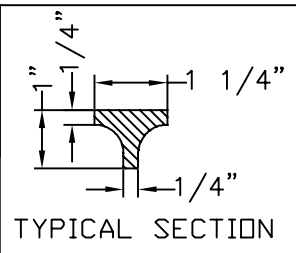


8 FOOT BENCH  
 LENGTH OF AVAILABLE BENCHES: 4', 5', 6', 8'  
 BENCHES OF LESS THAN 8' LENGTH  
 HAVE 2 LEGS



**KENNETH LYNCH & SONS**  
 114 WILLENBROCK RD. OXFORD, CT 06478  
 203-264-2831 INFO@KLYNCHANDSONS.COM

<b>6737-C ARMLESS WORLDS FAIR BENCH</b>		
Scale: FAX	Date 4/6/98	Drawn S.L.A.
<b>GENERAL LAYOUT</b>		Rev.: 5/1/2024
MAT: NATURAL CUMARU		#6737C-8-CU

**MATERIALS:**  
 X-BRACING: 3/16" X 1 1/4" HOT ROLLED STEEL  
 BENCH LEGS: CAST DUCTILE IRON  
 WOOD SLATS: CUMARU (DIPTERYX ODORATA)  
 SMALL FASTENERS (CARRIAGE BOLTS, NUTS AND WASHERS) STAINLESS STEEL  
 TIE ROD: 5/8" DIA HOT ROLLED STEEL WITH 5/8 - 11 CUT THREADS & GALVANIZED STEEL HEX NUTS