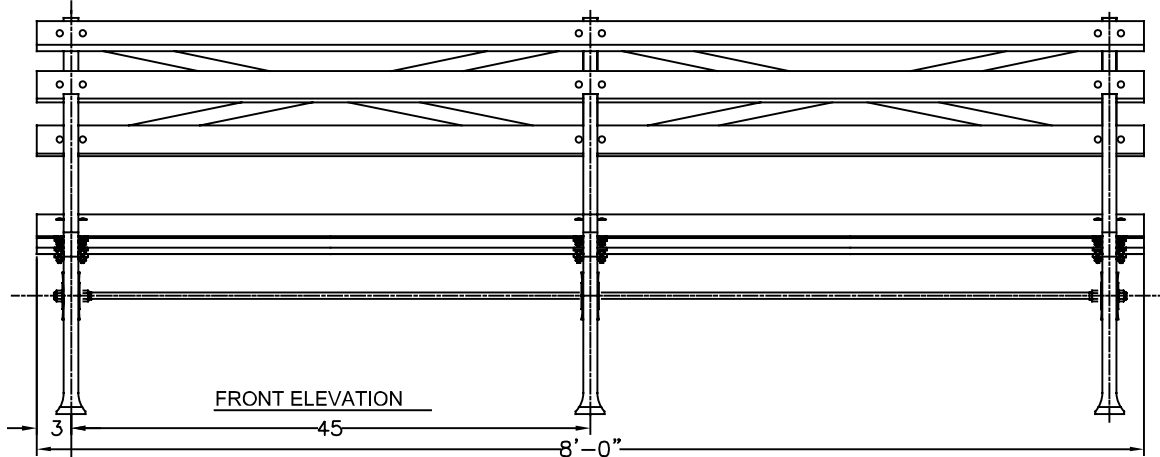
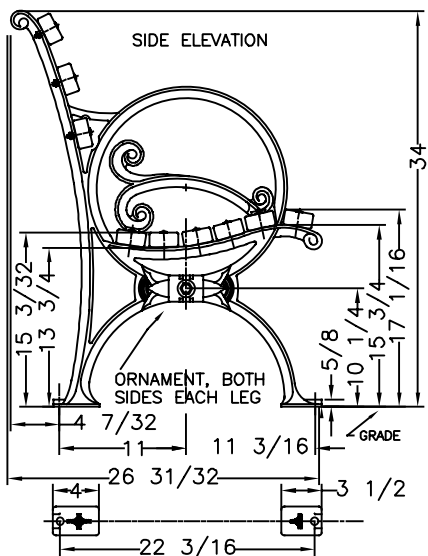


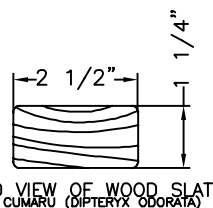
PLAN VIEW



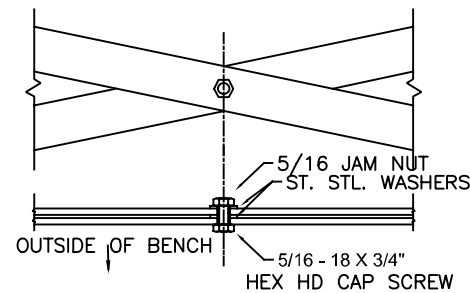
FRONT ELEVATION



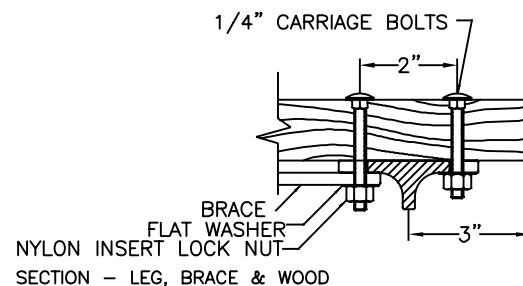
SIDE ELEVATION



END VIEW OF WOOD SLAT  
CUMARU (DIPTERYX ODORATA)



DETAIL OF BACK BRACE



SECTION - LEG, BRACE & WOOD

WHEN USED, ANCHOR BOLTS ARE TO BE INSTALLED IN EACH FOOT OF EACH LEG.

**MATERIALS:**

- X-BRACING: 3/16" X 1 1/4" HOT ROLLED STEEL
- BENCH LEGS: CAST DUCTILE IRON
- WOOD SLATS: CUMARU (DIPTERYX ODORATA)
- SMALL FASTENERS (CARRIAGE BOLTS, NUTS AND WASHERS) STAINLESS STEEL
- TIE ROD: 5/8" DIA HOT ROLLED STEEL WITH 5/8 - 11 CUT THREADS & GALVANIZED STEEL HEX NUTS

**KENNETH LYNCH & SONS**

114 WILLENBROCK RD.  
OXFORD, CT 06478  
PH: 203-264-2831  
INFO@KLYNCHANDSONS.COM

<b>6737 WORLDS FAIR BENCH</b>		
Scale FAX	Date 6/17/22	Drawn T.J.D.
NATURAL CUMARU		8' LONG
3 LEGS		CONTRACT #
6737B-8-CU-2024		