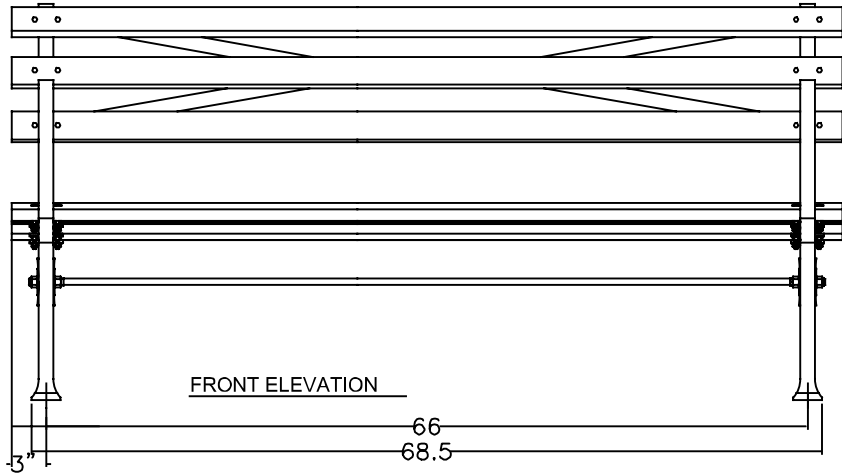
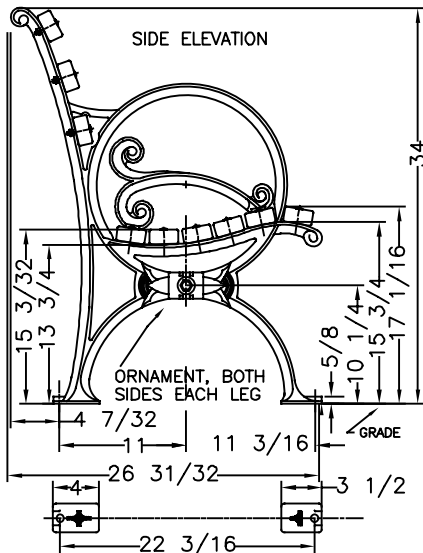


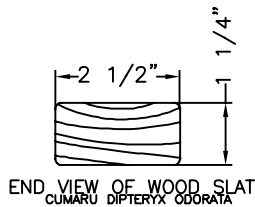
PLAN VIEW



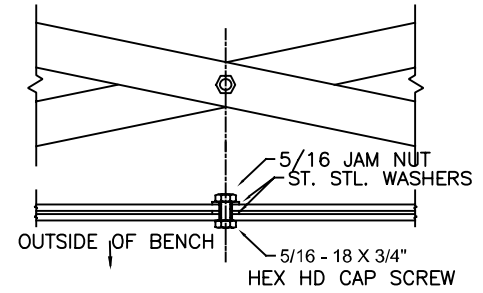
FRONT ELEVATION



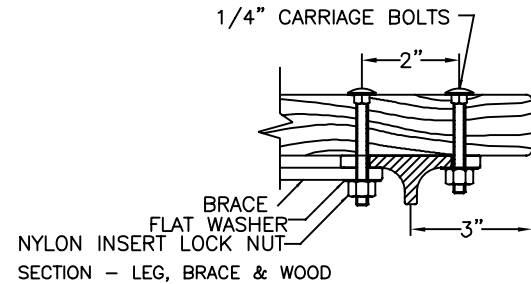
SIDE ELEVATION



END VIEW OF WOOD SLAT
CUMARU DIPTERYX ODORATA



DETAIL OF BACK BRACE



SECTION - LEG, BRACE & WOOD

WHEN USED, ANCHOR BOLTS ARE TO BE INSTALLED IN EACH FOOT OF EACH LEG.

MATERIALS:

- X-BRACING: 3/16" X 1 1/4" HOT ROLLED STEEL
- BENCH LEGS: CAST DUCTILE IRON
- WOOD SLATS: CUMARU (DIPTERYX ODORATA)
- SMALL FASTENERS (CARRIAGE BOLTS, NUTS AND WASHERS) STAINLESS STEEL
- TIE ROD: 5/8" DIA HOT ROLLED STEEL WITH 5/8 - 11 CUT THREADS & GALVANIZED STEEL HEX NUTS

KENNETH LYNCH & SONS

114 WILLENBROCK RD.
OXFORD, CT 06478
PH: 203-264-2831
INFO@KLYNCHANDSONS.COM

6737 WORLDS FAIR BENCH		
Scale FAX	Date 5/1/2024	Drawn T.J.D.
NATURAL CUMARU		6' LONG
2 LEGS	CONTRACT #	
6737B-6-CU-2024		