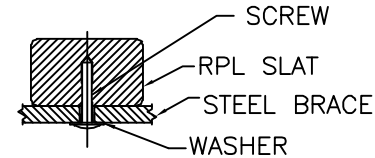
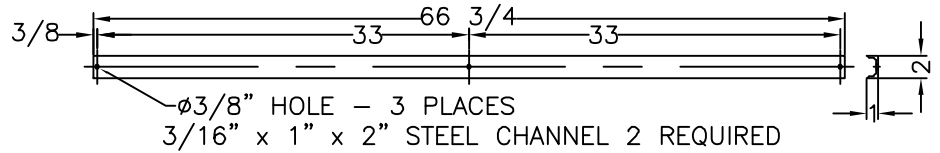
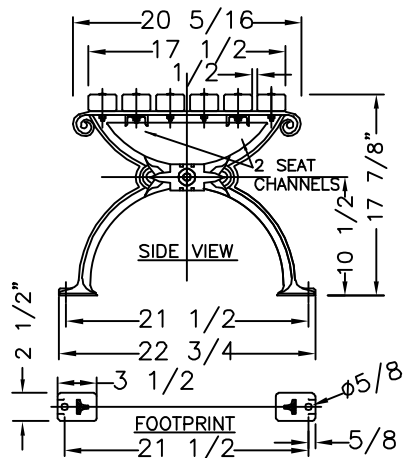
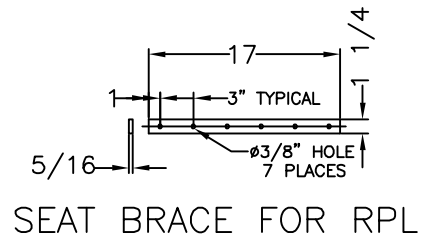
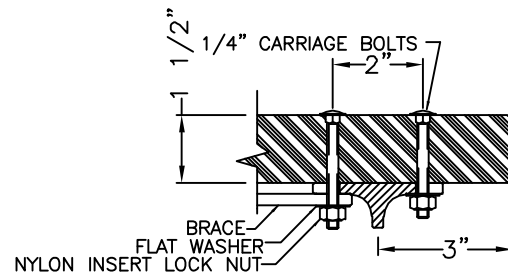
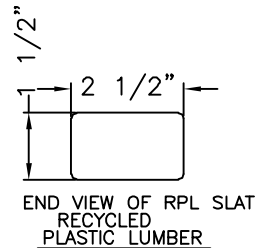
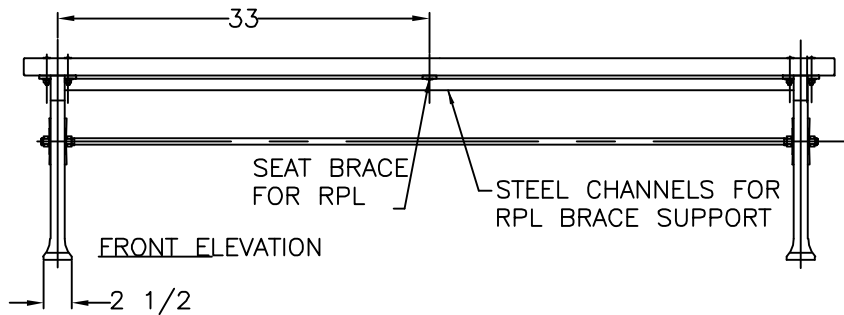


PIN-IN-TORX TAMPER  
RESIST SHEET METAL SCREW 18-8 STAINLESS  
STEEL, BUTTON HEAD, NO 14 SIZE, 1-1/2" LENGTH  
NOT VISIBLE FROM FRONT OF BENCH



SECTION VIEW  
OF RPL BENCH SLAT WITH  
CROSS BRACE & SCREW -  
USED ON SEAT & BACK BRACES  
FROM BOTTOM & BACK OF  
BRACES - 16 REQUIRED



COLOR:  
RPL \_\_\_\_\_  
CI & STEEL: BLACK  
MATERIALS:  
BENCH LEGS: CAST DUCTILE IRON  
SEAT SLATS: RECYCLED PLASTIC LUMBER (RPL)  
SMALL FASTENERS (CARRIAGE BOLTS, NUTS AND  
WASHERS) STAINLESS STEEL  
TIE ROD: 5/8" DIA HOT ROLLED STEEL WITH  
5/8 - 11 CUT THREADS & STEEL HEX NUTS  
CROSS BRACE: 3/8" x 1 1/4" HOT ROLLED STEEL  
LONG BRACE: 3/16" x 1" x 2" STEEL CHANNEL

WHEN USED, ANCHOR  
BOLTS ARE TO BE  
INSTALLED IN EACH  
FOOT OF EACH LEG.

**KENNETH LYNCH  
& SONS**  
114 WILLENBROCK RD.  
OXFORD, CT 06478  
PH: 203-264-2831  
INFO@KLYNCHANDSONS.COM

<b>6736E WORLDS FAIR BACKLESS BENCH</b>		
Scale FAX	Date 8/18/22	Drawn T.J.D.
<b>RECYCLED PLASTIC SLATS</b>		<b>6' LONG</b>
<b>2 LEGS</b>	CONTRACT #	
<b>6736E-6-RPL-FX-2022</b>		