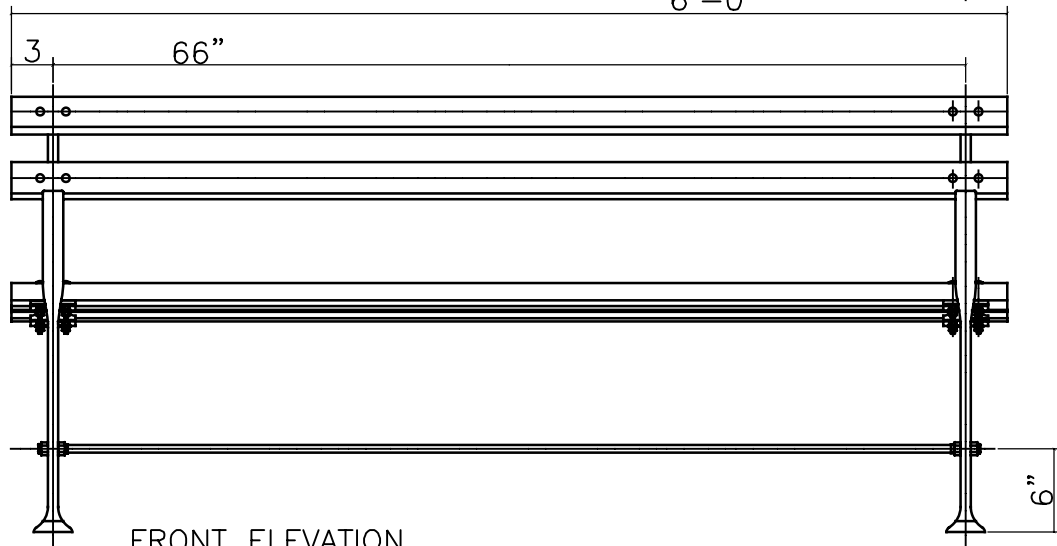
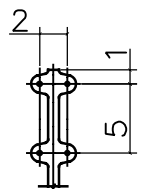


6'-0"



3 66"

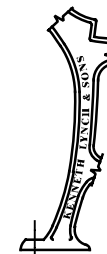
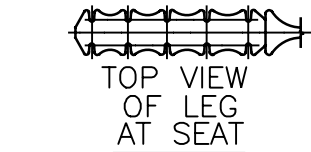
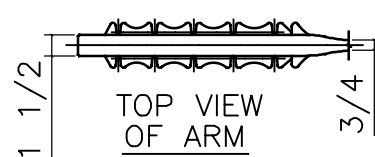
6"



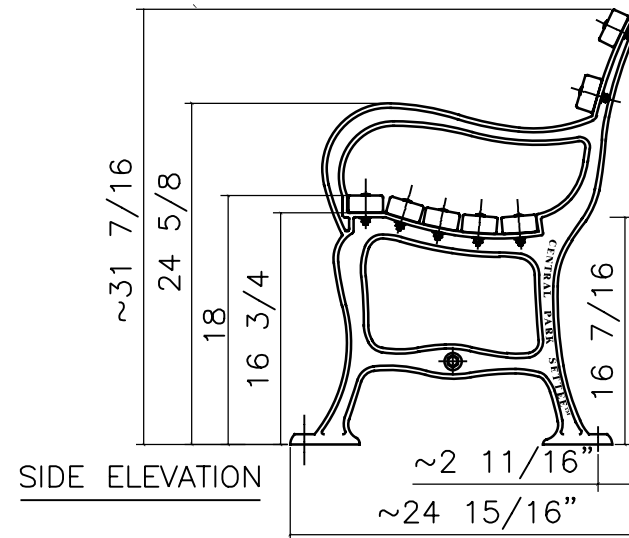
REAR ELEVATION OF UPPER LEG

6 FOOT BENCH

LENGTH OF AVAILABLE BENCHES: 4', 5', 6' 8'
BENCHES OF LESS THAN 8' LENGTH HAVE 2 LEGS



REVERSE SIDE OF BACK LEG



~31 7/16

24 5/8

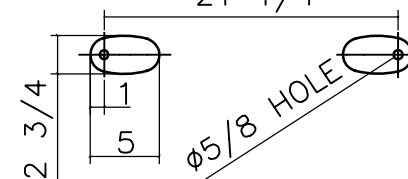
18

16 3/4

~2 11/16"

~24 15/16"

21 1/4"



2 3/4

1

5

Ø5/8 HOLE

MATERIALS:

- BENCH LEGS: CAST DUCTILE IRON
- WOOD SLATS: CUMARU DIPTERYX ODORATA
- SMALL FASTENERS (CARRIAGE BOLTS, NUTS AND WASHERS) STAINLESS STEEL
- TIE ROD: 5/8" DIA HOT ROLLED STEEL WITH 5/8 - 11 CUT THREADS & STEEL HEX NUTS

©2001 Kenneth Lynch & Sons
Oxford CT 06478

KENNETH LYNCH & SONS

114 WILLENBROCK ROAD OXFORD, CT 06478
PHONE 203-264-2831 INFO@KLYNCHANDSONS.COM

#6735B 6' CENTRAL PARK SETTEE		
Scale NTS	Date 5/7/2024	Drawn S.L.A.
INTEGRAL ARMS		
MAT: SEE NOTES		#6735B-6-2024