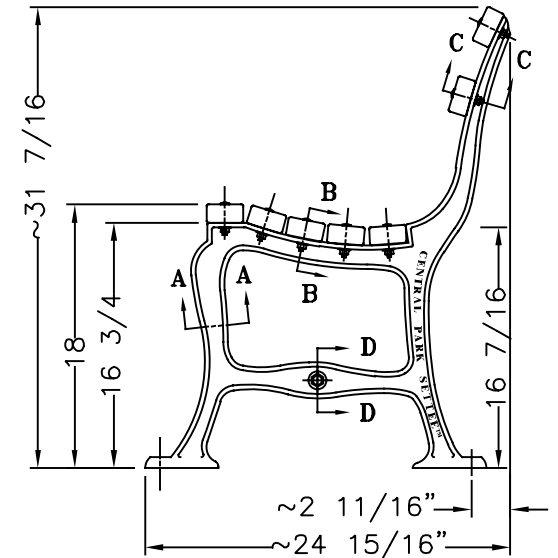


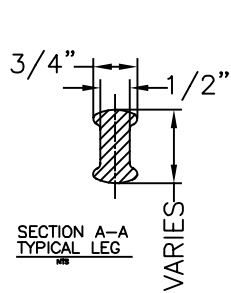
FRONT ELEVATION

8 FOOT BENCH

LENGTH OF AVAILABLE BENCHES: 4', 5', 6', 8'
BENCHES OF LESS THAN 8' LENGTH HAVE 2 LEGS

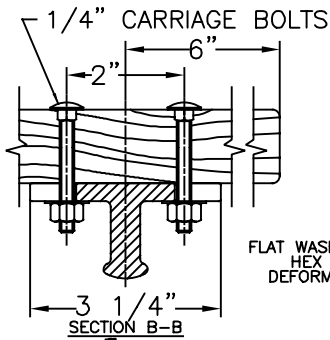


SIDE ELEVATION



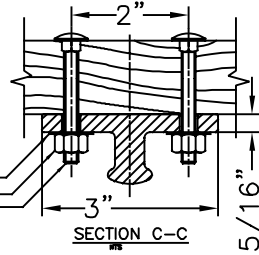
SECTION A-A
TYPICAL LEG

VARIES

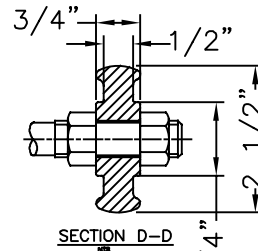


SECTION B-B

FLAT WASHER
HEX NUT
DEFORM END

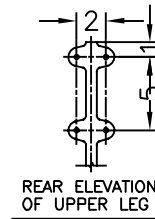


SECTION C-C

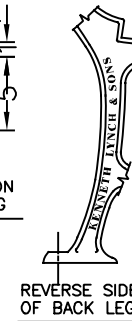


SECTION D-D

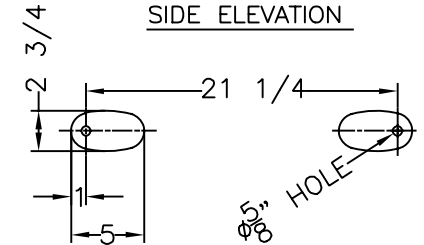
Ø 1 1/4"



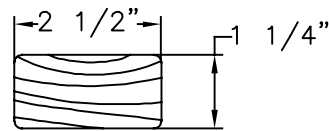
REAR ELEVATION
OF UPPER LEG



REVERSE SIDE
OF BACK LEG



BOTTOM VIEW
OF FEET



END VIEW OF WOOD SLAT

MATERIALS:

BENCH LEGS: CAST DUCTILE IRON

WOOD SLATS: CUMARU/ DIPTERYX ODORATA

SMALL FASTENERS (CARRIAGE BOLTS, NUTS & WASHERS) STAINLESS STEEL

TIE ROD: 5/8" DIA HOT ROLLED STEEL WITH 5/8 - 11 CUT THREADS & GALVANIZED STEEL HEX NUTS

KENNETH LYNCH & SONS

114 WILLENBROCK RD. OXFORD, CT 06478

203-264-2831 INFO@KLYNCHANDSONS.COM

#6735 8' CENTRAL PARK SETTEE

Scale NTS

Date 5/7/2024

Drawn S.L.A.

8' LONG BENCH

MAT: SEE NOTES

#6735-8-2024