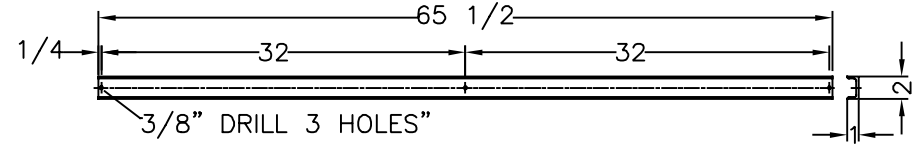
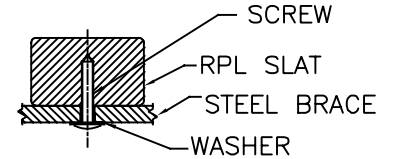
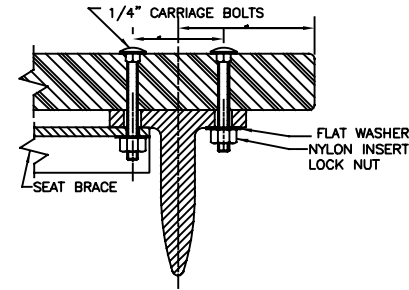


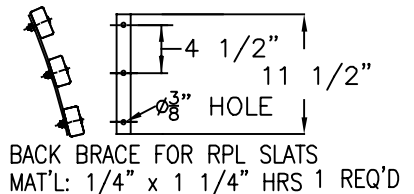
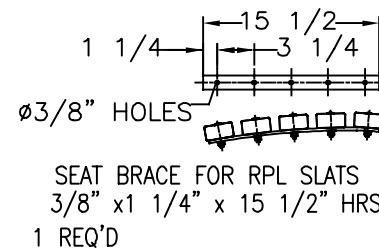
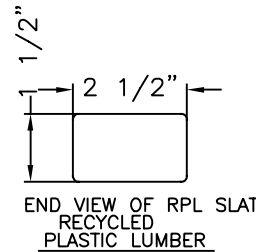
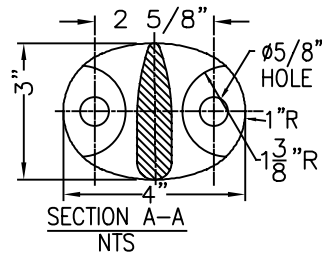
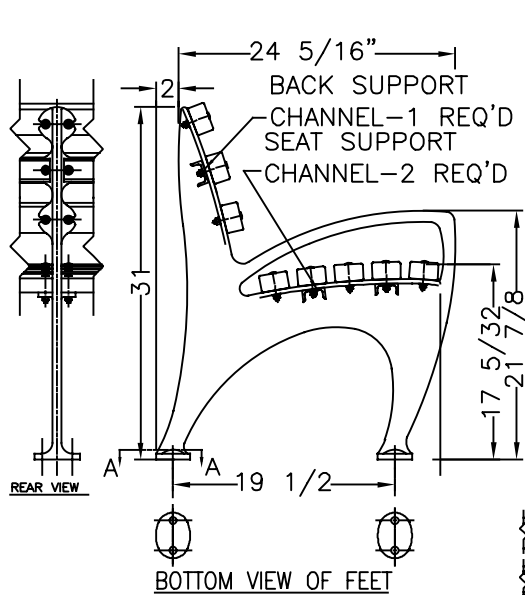
PIN-IN-TORX TAMPER
 RESIST SHEET METAL SCREW 18-8 STAINLESS
 STEEL, BUTTON HEAD, NO 14 SIZE, 1-1/2" LENGTH
 NOT VISIBLE FROM FRONT OF BENCH



3/16" x 1" x 2" CHANNEL 3 PIECES



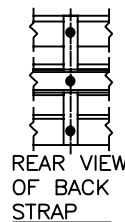
SECTION VIEW
 OF RPL BENCH SLAT WITH
 CROSS BRACE & SCREW -
 USED ON SEAT & BACK BRACES
 FROM BOTTOM & BACK OF
 BRACES - 8 REQUIRED



COLOR:
 RPL _____
 CI & STEEL: GALVANIZED

MATERIALS:
 BENCH LEGS: CAST DUCTILE IRON
 BENCH SLATS: RPL (RECYCLED PLASTIC LUMBER)
 SMALL FASTENERS (CARRIAGE BOLTS, NUTS,
 WASHERS & SCREWS) = STAINLESS STEEL
 BRACES FOR RPL:
 2" x 1" x 3/16" STEEL CHANNEL
 3/8" x 1 1/4" HRS & 1/4" x 1 1/4" HRS

WHEN USED, ANCHOR
 BOLTS ARE TO BE
 INSTALLED IN EACH
 FOOT OF EACH LEG.



**KENNETH LYNCH
 & SONS**

114 WILLENBROCK RD.
 OXFORD, CT 06478
 PH: 203-264-2831
 INFO@KLYNCHANDSONS.COM

6733A 1964 WORLDS FAIR BENCH		
Scale FAX	Date 5/13/2024	Drawn T.J.D.
RECYCLED PLASTIC SLATS		6' LONG
2 LEGS	CONTRACT #	
6733A-6-RPL-GALV-2024		