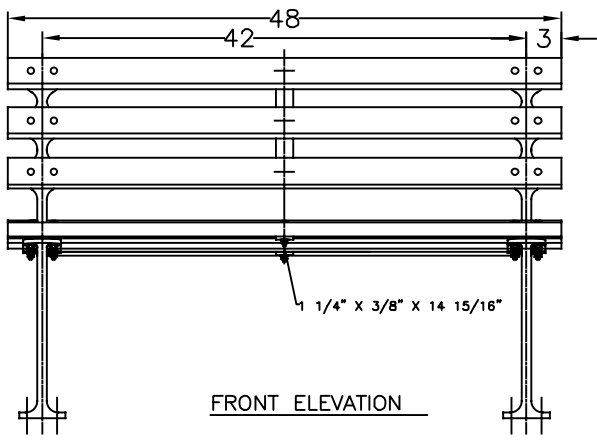
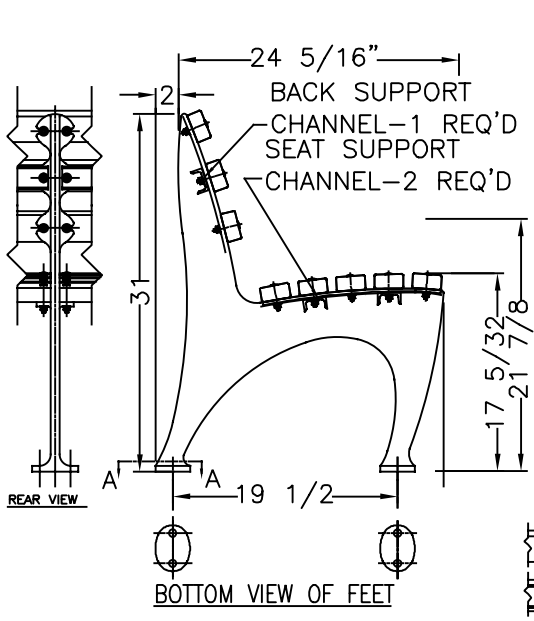


PLAN VIEW

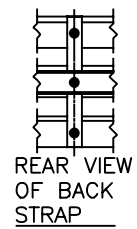


FRONT ELEVATION

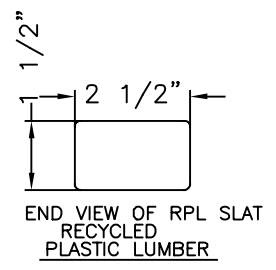
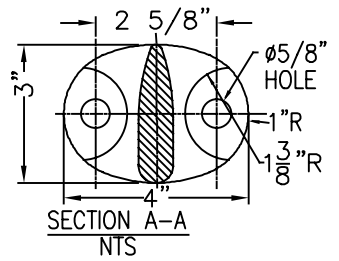


BOTTOM VIEW OF FEET

WHEN USED, ANCHOR BOLTS ARE TO BE INSTALLED IN EACH FOOT OF EACH LEG.

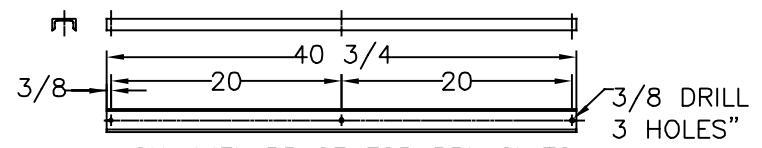


REAR VIEW OF BACK STRAP

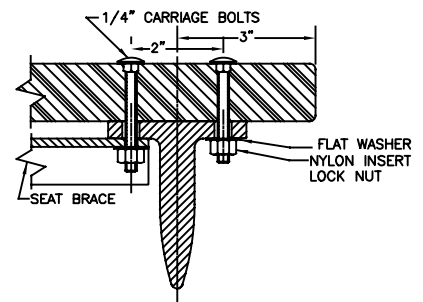


END VIEW OF RPL SLAT RECYCLED PLASTIC LUMBER

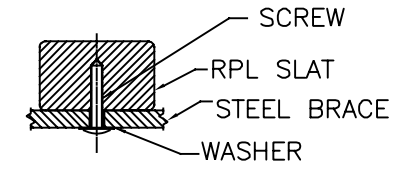
PIN-IN-TORX TAMPER RESIST SHEET METAL SCREW 18-8 STAINLESS STEEL, BUTTON HEAD, NO 14 SIZE, 1-1/2" LENGTH NOT VISIBLE FROM FRONT OF BENCH



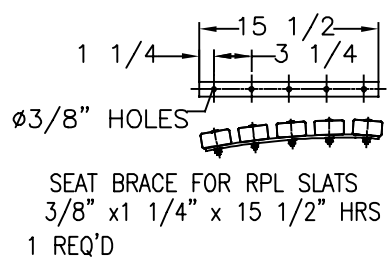
CHANNEL BRACE FOR RPL SLATS  
MAT'L: 3/16" x 2" x 1" STEEL CHANNEL  
3 REQUIRED



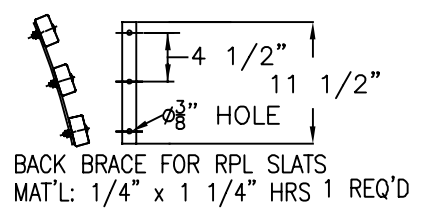
SEAT BRACE



SECTION VIEW OF RPL BENCH SLAT WITH CROSS BRACE & SCREW - USED ON SEAT & BACK BRACES FROM BOTTOM & BACK OF BRACES - 8 REQUIRED



SEAT BRACE FOR RPL SLATS  
3/8" x 1 1/4" x 15 1/2" HRS  
1 REQ'D



BACK BRACE FOR RPL SLATS  
MAT'L: 1/4" x 1 1/4" HRS 1 REQ'D

COLOR:  
RPL \_\_\_\_\_  
CI & STEEL: GALVANIZED

MATERIALS:  
BENCH LEGS: CAST DUCTILE IRON  
BENCH SLATS: RPL (RECYCLED PLASTIC LUMBER)  
SMALL FASTENERS (CARRIAGE BOLTS, NUTS, WASHERS & SCREWS) = STAINLESS STEEL  
BRACES FOR RPL:  
2"x1" x 3/16" STEEL CHANNEL  
3/8"x1 1/4" HRS & 1/4"x1 1/4" HRS

**KENNETH LYNCH & SONS**  
114 WILLENBROCK RD.  
OXFORD, CT 06478  
PH: 203-264-2831  
INFO@KLYNCHANDSONS.COM

6733 1964 WORLDS FAIR BENCH		
Scale FAX	Date 5/13/2024	Drawn T.J.D.
RECYCLED PLASTIC SLATS		4' LONG
2 LEGS	CONTRACT #	
6733-4-RPL-GALV-2024		