



# KENNETH LYNCH & SONS

Est. 1927

## 6732 - World's Fair table and benches installation

All site work is the responsibility of the installer; we are offering recommendations only.

Select a level surface, preferably with hardscape such as concrete. One table set requires an area that this 7' 2 1/2" x 4'.

Item	Description - Size	Weight
6732	1939 World's Fair Chess table	425 pounds
6737C-4	1939 World's Fair armless bench, 4' long	160 pounds

Proper orientation of the table top is dependent on the table base location. Make sure to orient the V shaped opening of the base to be square with one bench location. When placing table top, a white square should be located in the lower right corner in front of the bench locations.

Benches to be placed center on the playing sides of the tables, see above. Benches are to be positioned so that the front slat is 1" from the edge of the concrete table top.

Once desired table and bench locations have been determined, mark and drill concrete to accept 1/2" x 4" long wedge style anchor bolts. Install table and benches over drilled holes and insert appropriate anchors. Pein over threads to prevent removal.

Concrete is composed of stone aggregate of various sizes. Due to its organic nature, color may vary from piece to piece. In precast concrete, there will be seams. Though they are polished down in our finishing process, they may still be visible. Concrete tables will only crack under extreme conditions, however minor hairline cracks or crazing may appear. These are natural and part of the nature of curing concrete.

Concrete can be cleaned with non-abrasive cleaners, hand scrubbing or power washing. Concrete sealant should be re-applied every 3 - 5 years, after a thorough cleaning. Concrete is a porous stone and it is expected that some environmental conditions will stain the concrete, such as tree sap and heavy pollution, even with the concrete sealant applied.

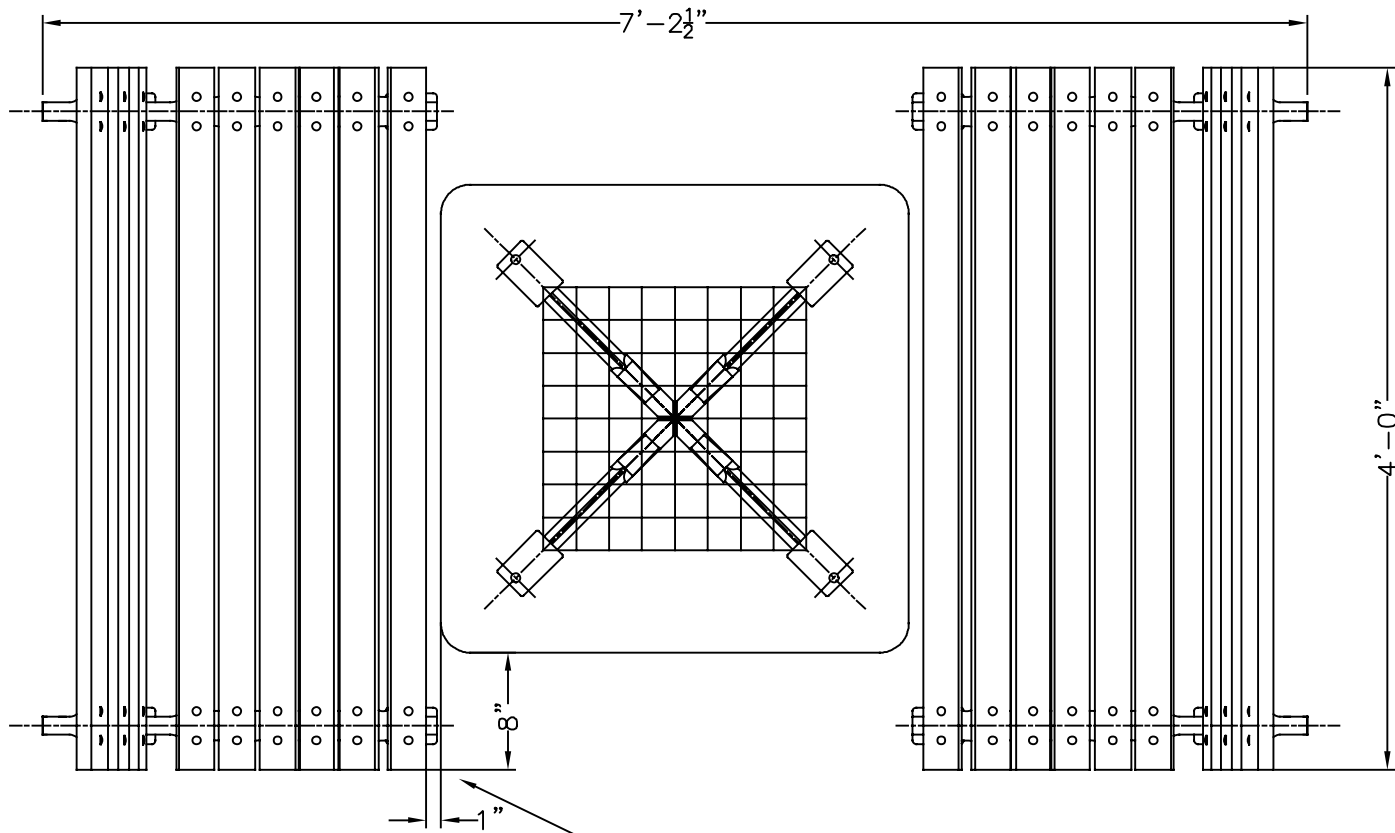
The sealant we use is available from Professional Products of Kansas, We apply 2 coats of PWS-8:

<http://watersealant.com/index.php/products/anti-graffiti-system-2/>

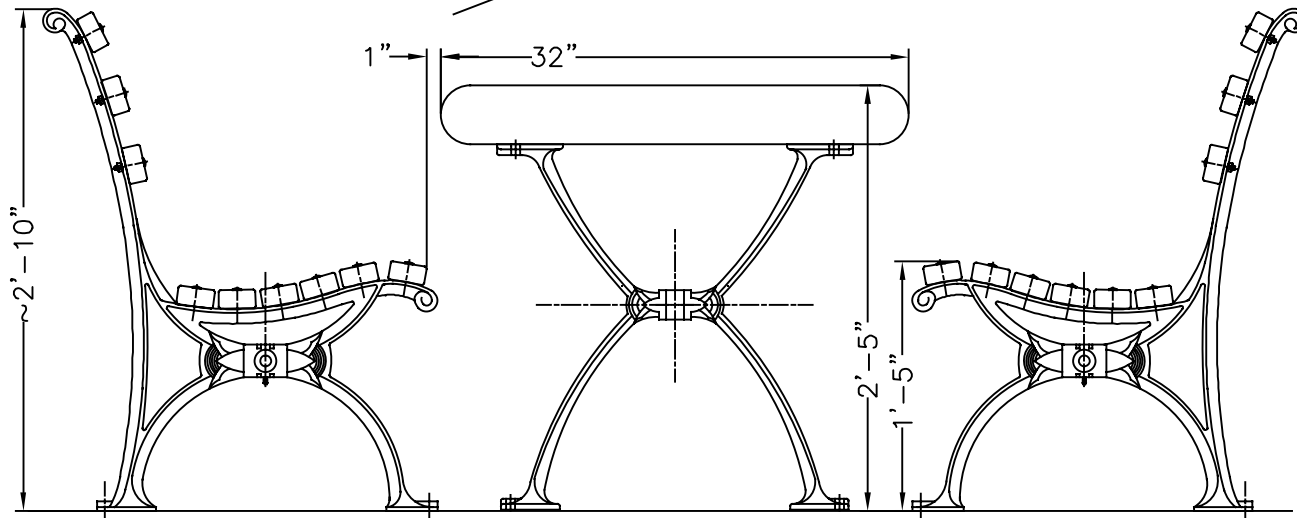


FLORENTINE  
Classics





ALLOW FOR 1" BETWEEN SEAT SLAT AND TABLE EDGE.



6737C-4' BENCH

6732 WF GAME TABLE

6737C-4' BENCH

**KENNETH LYNCH & SONS**  
 114 WILLENBROCK ROAD OXFORD CT 06478  
 203-264-2831 INFO@KLYNCHANDSONS.COM

<b>#6732 WORLD'S FAIR GAME TABLE</b>		
FAX	Date 9/13/24	Drawn M.T.D.
<b>TABLE LAYOUT</b>		<b>6737C BENCHES</b>
<b>#6732-6737C-FX</b>		