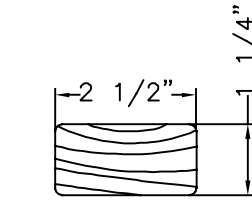
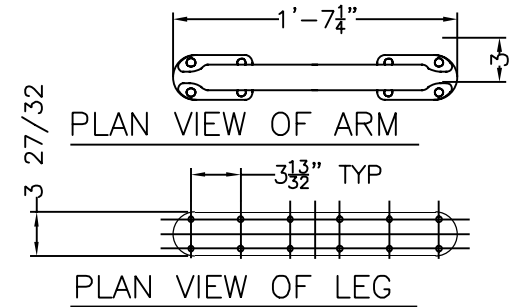


PLAN VIEW

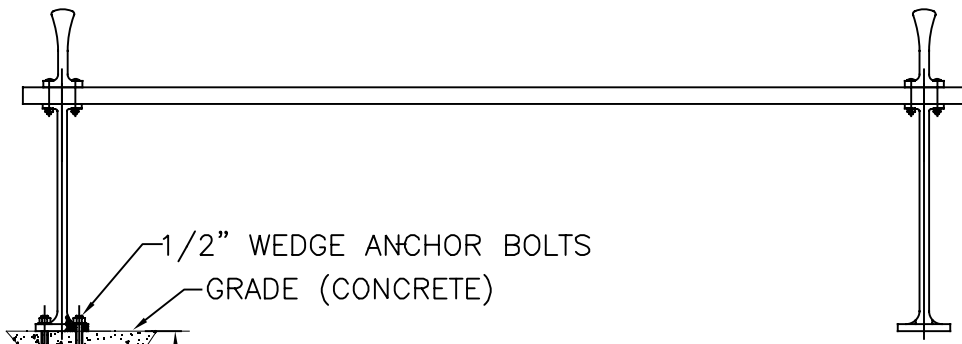


END VIEW OF WOOD SLAT

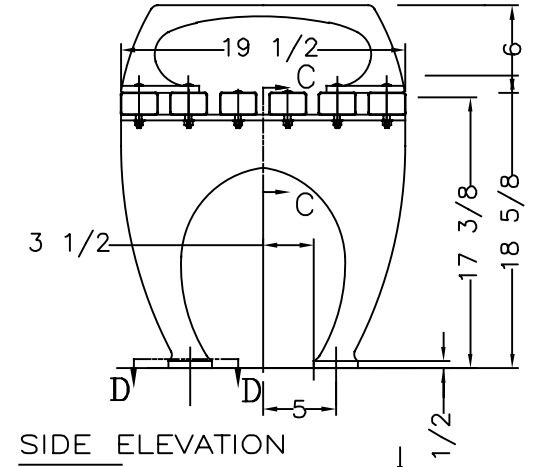


PLAN VIEW OF ARM

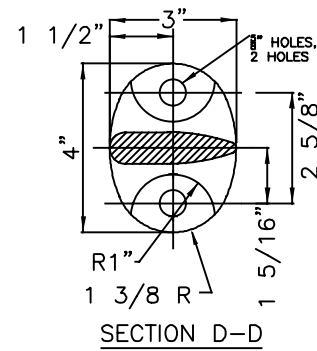
PLAN VIEW OF LEG



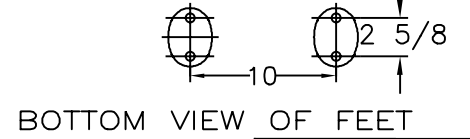
FRONT ELEVATION



SIDE ELEVATION

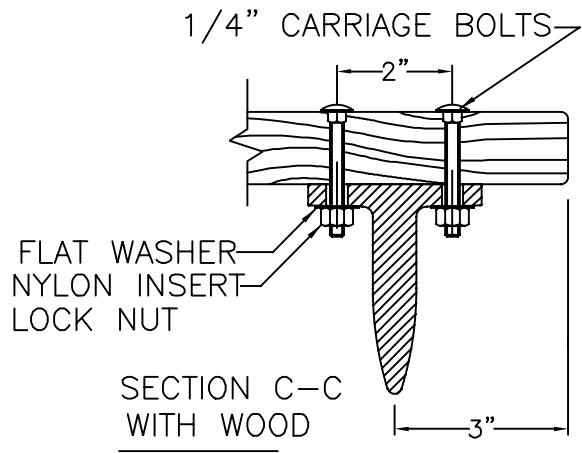


SECTION D-D



BOTTOM VIEW OF FEET

WHEN USED, ANCHOR BOLTS ARE TO BE INSTALLED IN EACH FOOT OF EACH LEG.



**MATERIALS:**

BENCH LEGS & ARMS: BLACK STEEL  
 SLATS: CUMARU / DIPTERYX ODORATA  
 SMALL FASTENERS (CARRIAGE BOLTS, NUTS, WASHERS & SCREWS): STAINLESS STEEL

**KENNETH LYNCH & SONS**

114 WILLENBROCK RD.  
 OXFORD, CT 06478  
 PH: 203-264-2831  
 INFO@KLYNCHANDSONS.COM

<b>6731A 1964 WORLDS FAIR BENCH</b>		
Scale FAX	Date 5/14/2024	Drawn T.J.D.
<b>NATURAL CUMARU</b>		<b>6' LONG</b>
<b>2 LEGS</b>	CONTRACT #	
6731A-6-CU-2024		