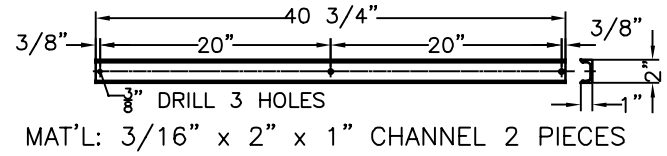
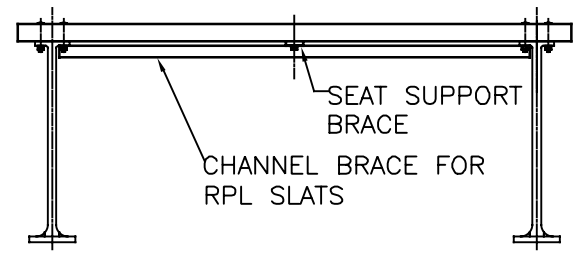


PLAN VIEW

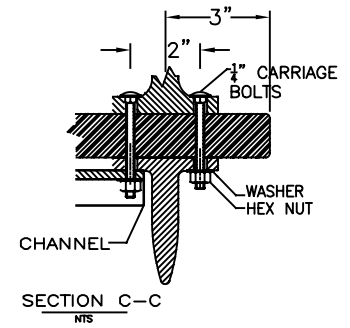
PIN-IN-TORX TAMPER
RESIST SHEET METAL SCREW 18-8 STAINLESS
STEEL, BUTTON HEAD, NO 14 SIZE, 1-1/2" LENGTH
NOT VISIBLE FROM FRONT OF BENCH



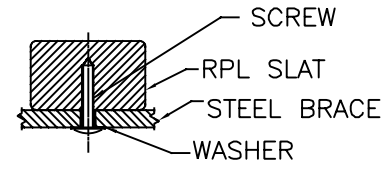
MAT'L: 3/16" x 2" x 1" CHANNEL 2 PIECES



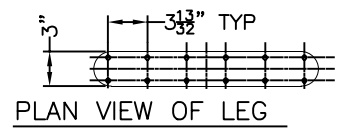
FRONT ELEVATION



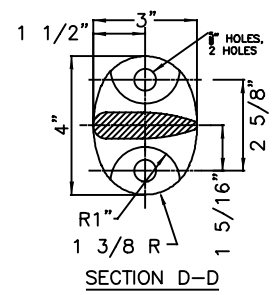
SECTION C-C
NTS



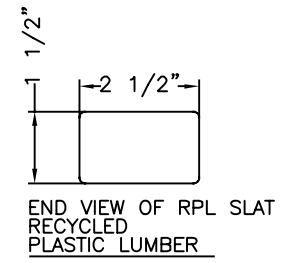
SECTION VIEW
OF RPL BENCH SLAT WITH
CROSS BRACE & SCREW -
USED ON SEAT & BACK BRACES
FROM BOTTOM & BACK OF
BRACES - 6 REQUIRED



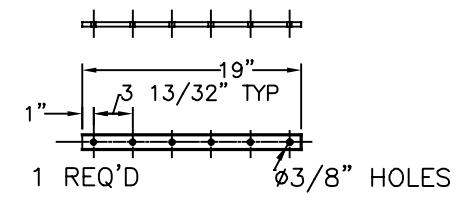
PLAN VIEW OF LEG



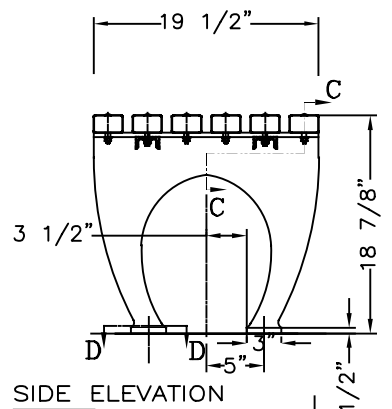
SECTION D-D



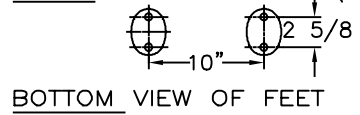
END VIEW OF RPL SLAT
RECYCLED
PLASTIC LUMBER



SEAT BRACE FOR RPL SLATS
3/8" x 1 1/4" x 19" HRS



SIDE ELEVATION



BOTTOM VIEW OF FEET

WHEN USED, ANCHOR
BOLTS ARE TO BE
INSTALLED IN EACH
FOOT OF EACH LEG.

COLOR:
RPL _____
CI & STEEL: GALVANIZED IRON

MATERIALS:
BENCH LEGS & ARMS: GALVANIZED IRON
RPL BRACES: 3/8" x 1 1/4" HRS
3/16" x 1" x 2" STEEL CHANNEL

SLATS: RECYCLED PLASTIC LUMBER (RPL)
SMALL FASTENERS (CARRIAGE BOLTS, NUTS,
WASHERS & SCREWS): STAINLESS STEEL

**KENNETH LYNCH
& SONS**
114 WILLENBROCK RD.
OXFORD, CT 06478
PH: 203-264-2831
INFO@KLYNCHANDSONS.COM

6731 1964 WORLDS FAIR BENCH		
Scale FAX	Date 8/15/22	Drawn T.J.D.
RECYCLED PLASTIC SLATS		4' LONG
2 LEGS	CONTRACT #	
6731-4-RPL-GALV-FX-2022		