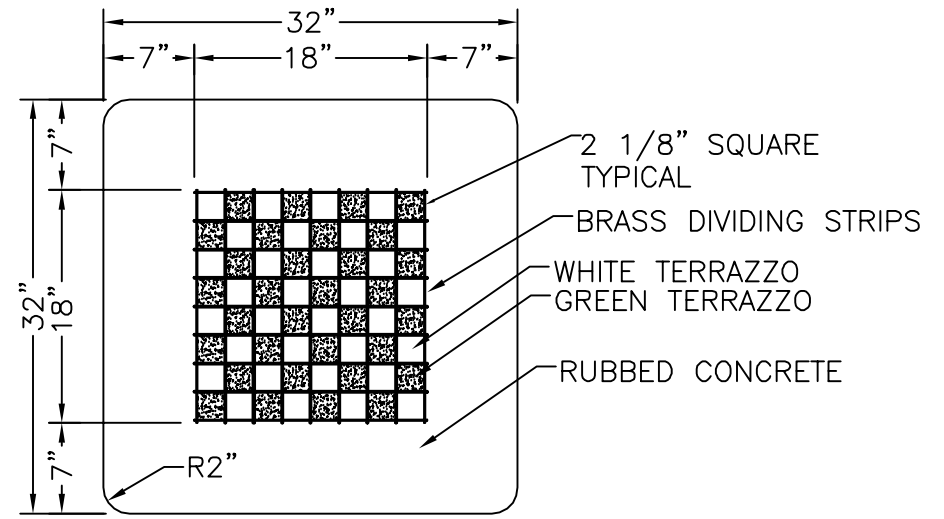
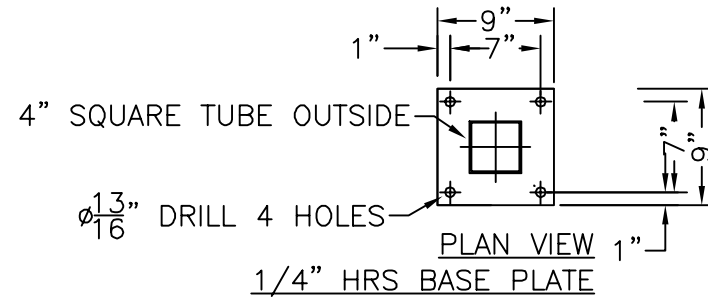


ELEVATION - FULL SECTION



PLAN VIEW



PLAN VIEW
1/4" HRS BASE PLATE

GRAFITTI RESISTANT COATING:
PROFESSIONAL PRODUCTS OF
KANSAS PROFESSIONAL WATER
SEALANT, PWS-8. TWO COATS
SHOP APPLIED TO ALL EXPOSED
PARTS OF CONCRETE TABLE TOP.
FIRST COAT ALLOWED TO DRY TO
THE TOUCH BEFORE SECOND COAT
APPLIED.

NOTE:
CHECKER TABLES SHALL BE SET SO
THAT A PERSON SEATED ON THE BENCH
WILL HAVE A WHITE SQUARE IN THE
LOWER RIGHT HAND CORNER OF THE
BOARD

KENNETH LYNCH & SONS

114 WILLENBROCK ROAD
OXFORD, CT 06478
PHONE 203-264-2831
INFO@KLYNCHANDSONS.COM

466D GAME TABLE - CAST STONE

Scale: FAX Date: 2/16/21 Drawn: OTTMAN R

SQUARE STEEL LEG SURFACE MOUNT

MAT'L: CAST STONE

#466D FX