



# Masks & Plaques



# LION MASKS



**NO. 462 LION HEAD MASK**  
 Cast Stone  
 13" w X 14" h backplate  
 Can be drilled for water.



**NO. 1202 LION MASK**  
 33" h X 23" w X 6" projection  
 A very impressive mask. Can be drilled for water.



**NO. 2105 LION MASK**  
 Cast Stone  
 8 1/2" diameter  
 Can be drilled for water.  
 Available in Lead or Bronze.



**NO. 5422 LION HEAD**  
 Bronze  
 19" h X 14" w X 9" projection.  
 Can be drilled for water.



**NO. 2145 LION MASK**  
 Cast Stone  
 12 3/4" diameter  
 Design by Joseph Kuthmayer.  
 Can be drilled for water.  
 Available in Lead or Bronze.



**NO. 4968 LION MASK**  
 Cast Stone  
 20" h X 14" w X 11" projection  
 Piped. Modeled by architect for special project.  
 Available in Bronze or Lead.



**NO. 2144 LION MASK**  
 Lead  
 6 1/2" diameter  
 Design by Joseph Kuthmayer.  
 Can be drilled for water.  
 Available in Bronze.





**NO. 2878 LION MASK**  
Lead  
11" X 10" X 5" projection  
Old Roman model.  
Can be drilled for water.  
Available in Bronze.



**NO. 4612 LION HEAD MASK**  
Lead  
11 1/2"w X 10 1/2"h  
Can be drilled for water.  
Available in Bronze.



**NO. 4613 LION HEAD MASK**  
Lead  
Available in three sizes:  
4 3/4"l X 4"w  
6 1/2" X 5 3/4"w  
8"l X 7 1/4"w  
Can be drilled for water.  
Available in Bronze.

**NO. 4676 LION HEAD MASK**  
Cast Stone  
16"h X 13"w X 6 1/2"projection  
6"h X 10"w  
Can be drilled for water.  
Approximate weight 50lbs.  
Available in Lead or Bronze.



**NO. 5510 LION MASK**  
Cast Stone  
19 1/2"h X 16 3/4"w X 6 1/2"thick  
Can be drilled for water.  
Approximate weight 70lbs.



**NO. 5511 LION MASK**  
Cast Stone  
14 3/4"h X 18"w X 9 1/2"projection  
Can be piped for water.

**NO. 5512 LION HEAD**  
Cast Stone  
22"h X 17"w X 11"projection  
Impressive detail, good water flow.  
Pipe size to suit.  
Available with a rim, similar to No. 5511.

# MASKS



**NO. 2858 RAM'S HEAD**  
Lead  
14"h X 16 1/2"w  
Very good detail. Piped.  
Available in Bronze.



**NO. 2157 RAM'S HEAD**  
Cast Stone  
11 1/2" X 11"  
Available in Lead.



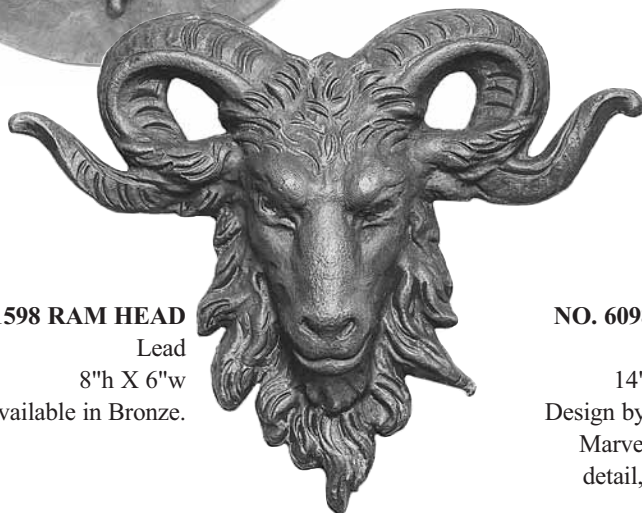
**NO. 2071 GARLANDED RAM'S HEAD MASK**  
Lead  
11"w X 16"h  
Available in Bronze.



**NO. 1337 RAM'S HEAD**  
Lead  
8 1/2"h  
Available in Bronze.



**NO. 2739 RAM'S HEAD MASK**  
Lead  
9 1/2"diameter  
When made in Cast Stone, a round plaque surrounds the Ram's head. When made in Cast Stone, plaque is 2" thick.  
Available in Bronze and Cast Stone.



**NO. 1598 RAM HEAD**  
Lead  
8"h X 6"w  
Available in Bronze.



**NO. 6098 HIPPO HEAD**  
Cast Stone  
14"h X 18"l X 14"w  
Design by F. Konopka, SC.  
Marvelously impressive detail, good water flow.  
Pipe size to suit.





**NO. 2146 ROMAN MASK**  
Lead, 10" h  
Available in Bronze.



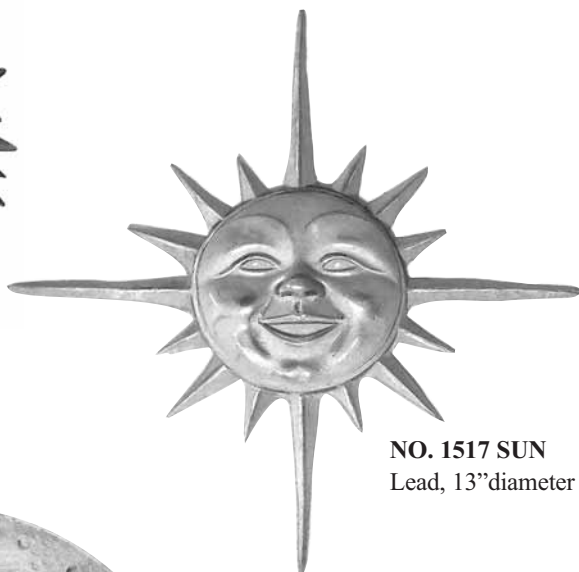
**NO. 2150 MASK**  
Lead, 8" X 10"  
Available in Bronze.



**NO. 5563 "FATHER THAMES" MASK**  
Cast Stone, 15" h  
Available in Lead and Bronze.



**NO. 2185 SUN**  
Lead, 5 1/2" diameter  
Available in Bronze.



**NO. 1517 SUN**  
Lead, 13" diameter



**NO. 2169 CAT TAIL GIRL**  
Lead, 8 1/2" h  
Available in Bronze.



**NO. 144 MOON**  
Cast Stone  
15" diameter

**NO. 195 SUN**  
Cast Stone  
17 1/2" h X 16" w



**NO. 6007 MASK**  
Cast Stone  
10" h X 7 1/2" w X 5" projection  
Mouth opening 1/2" diameter  
Original found in a garden in Florence, Italy. Easily affixed to a wall.

# MASKS & PLAQUES



**NO. 2191 GROTESQUE DOLPHIN HEAD**

Cast Stone, 13"w  
Will take large pipe for water.  
Available with back plate; 16"w X 12"h X 3"d. Total projection is 8".  
Available in Lead or Bronze.



**NO. 2162 DOLPHIN**

Lead, 7"w X 5 1/2"h  
Available in Bronze.

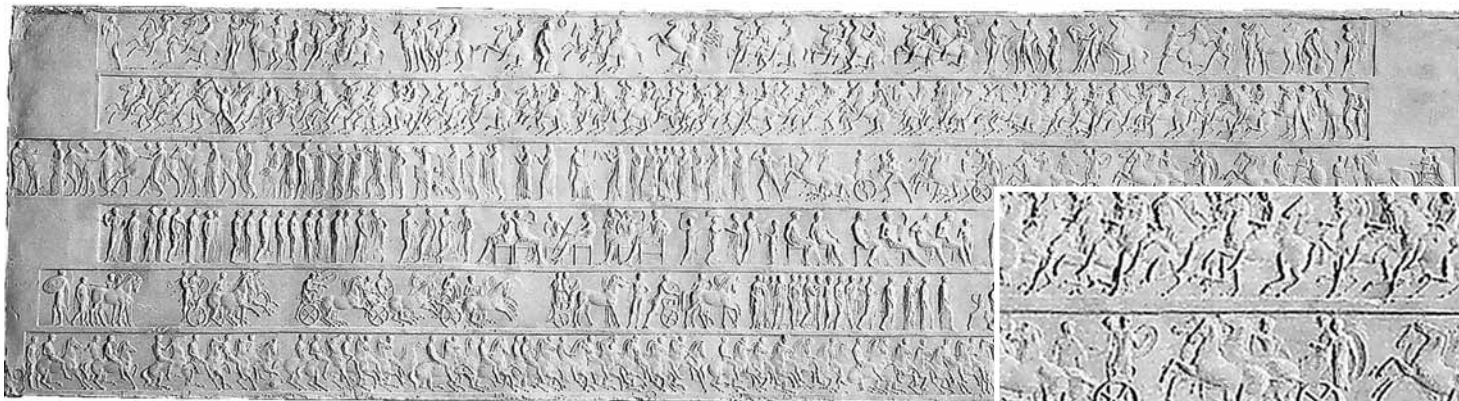


**NO. 2158 DOLPHIN MASK**

Cast Stone (with back plate)  
8 1/2"h X 14 1/4"w X 6 1/2"projection.  
Available in Lead or Bronze  
with size of; 7"h X 9"w X 3"projection.

**NO. 1427 AFRICAN MASK**

Lead, 7"w X 5 1/2"h  
Available in Bronze.



**NO. 552 PARTHENON FRIEZE PLAQUE**

Cast Stone, 51 1/4"l  
The original frieze is in the British Museum in London.



**NO. 866 GRECIAN FRIEZE**

Cast Stone  
16"h X 52"w X 5"d





# ZODIAC PLAQUES

These Zodiac Plaques are made of Cast Stone and are 10" in diameter and are 1" thick.



NO. 267 CAPRICORN



NO. 267 AQUARIUS



NO. 267 PISCES



NO. 267 ARIES



NO. 267 TAURUS



NO. 267 GEMINI



NO. 267 CANCER



NO. 267 LEO



NO. 267 VIRGO



NO. 267 LIBRA

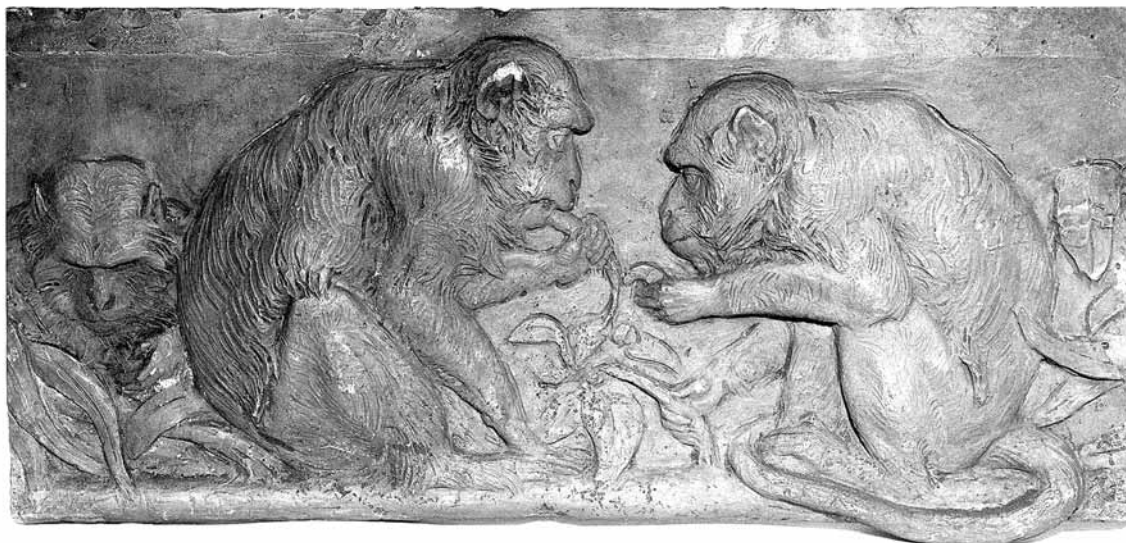


NO. 267 SCORPIO



NO. 267 SAGITTARIUS

# PLAQUES



**NO. 2955 MONKEY WALL PLAQUE**

Cast Stone  
32 1/2"l X 14 3/4"h



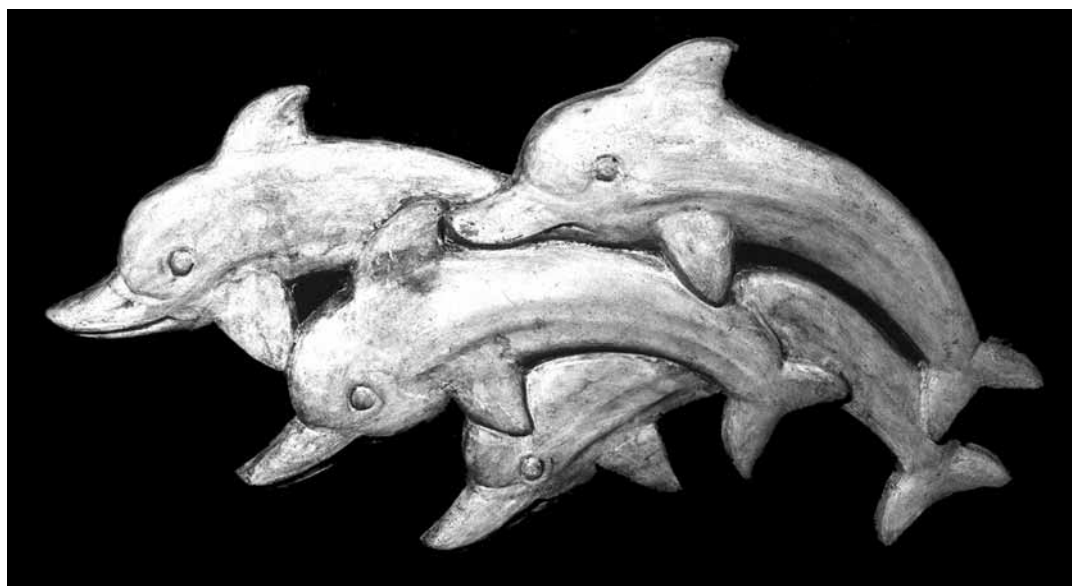
**NO. 2956 ORANGUTAN WALL  
PLAQUE**

Cast Stone  
13 1/2"w X 16"h



**NO. 801 CHERUB  
FRAGMENT PLAQUE**

Cast Stone  
19"h X 44"w X 4 3/4"d



**NO. 1350 DOLPHIN WALL PLAQUE**  
Cast Stone, 16"h X 29"w





**NO. 2952 "STAMPEDE" PLAQUE**

Cast Stone  
24"h X 31 1/2"w



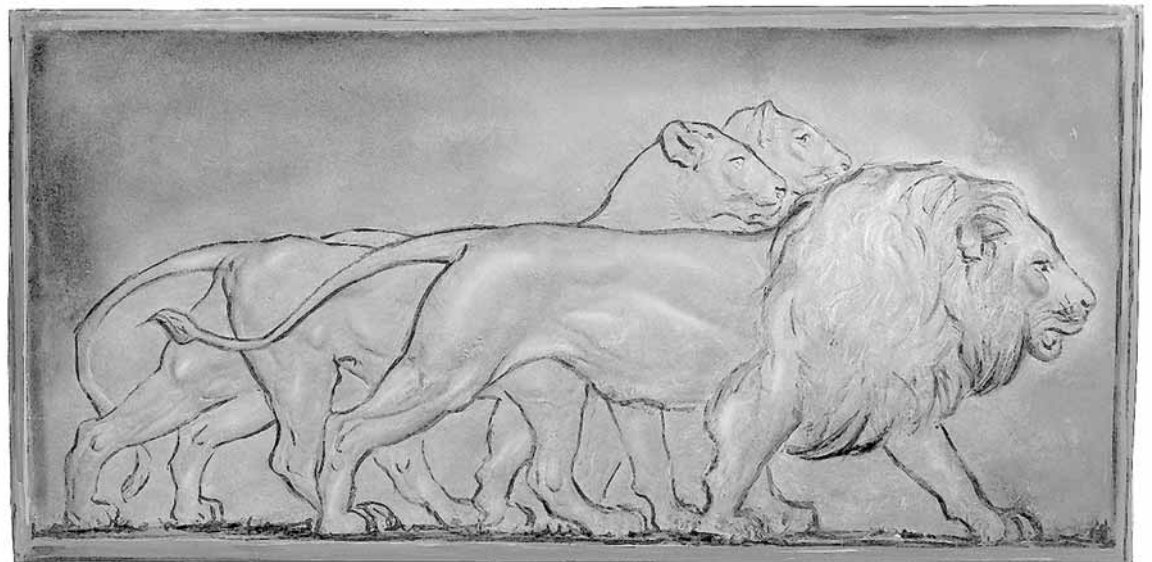
**NO. 2951 "PONY EXPRESS RIDER" PLAQUE**

Lead  
17 1/2" diameter  
Available in Bronze.



**NO. 2957 "FRONTIER" PLAQUE**

Cast Stone  
28"h X 42"w  
Available in Lead or Bronze.



**NO. 2953 LION RELIEF PLAQUE**

Cast Stone  
37"h X 75"l X 3" thick  
This piece weighs approximately 750 lbs., fitted with a suitable means of hanging or it can be built into a wall.



# PLAQUES



**NO. 2848 PLAQUE**

Lead

16 1/4" h X 10 3/4" w

Suitable for fountain back, etc. Can be incorporated into other design.

Available in Bronze.



**NO. 2849 PLAQUE**

Lead

25 1/2" h X 12 3/4" w

This can also be incorporated as a motif in a stone design.

Available in Bronze.



**NO. 2183 EAGLE PLAQUE**

Lead

11" h X 8" w

This plaque is a lead reproduction of Old Fire Mark.

Available in Bronze.



**NO. 2167 DRAFT STALLION PLAQUE**

Lead

4 5/8" w X 7 1/2" h

Plaque from original by Albrecht Duer.

Available in Bronze.





**NO. 2802 CELLO PLAYER WALL PLAQUE**

Lead  
10 3/4" X 9"  
Bold relief. Available in Bronze.



**NO. 5570 GARDEN PLAQUE**

Lead  
14"l X 8"w  
This lead is soft and will follow the contour of a rack or a tree as it can stand considerable contour bending. It has a beautiful soft finish of garden lead. It is intended for those who want something extra fine. It can be fastened with screws or nails which would be furnished.  
Available in Bronze.



**NO. 935 ST. GEORGE & DRAGON PLAQUE**

Lead  
16 1/4"h X 14 1/2"w



**NO. 696 BIRD PLAQUE**

Lead  
25"w X 28"h  
Available in Bronze.



**NO. 2856 FLOWER PLAQUE**

Cast Stone  
17 3/4"h X 10 3/4"w

# PLAQUES



**NO. 1511 PLAQUE**

Lead  
12" square



**NO. 1512 PLAQUE**

Lead  
11 3/4" square



**NO. 1513 PLAQUE**

Lead  
12" square



**NO. 2042 ADAMS PLAQUE**

Lead  
24"w X 14 1/2"h  
Available in Bronze.

**NO. 2224 ENGLISH  
HERALDIC PLAQUE**

Lead  
18"h X 9 3/8"  
Available in Bronze.



**NO. 1514 LION PLAQUE**

Cast Stone  
18" square





## “The Canticle of the Sun”



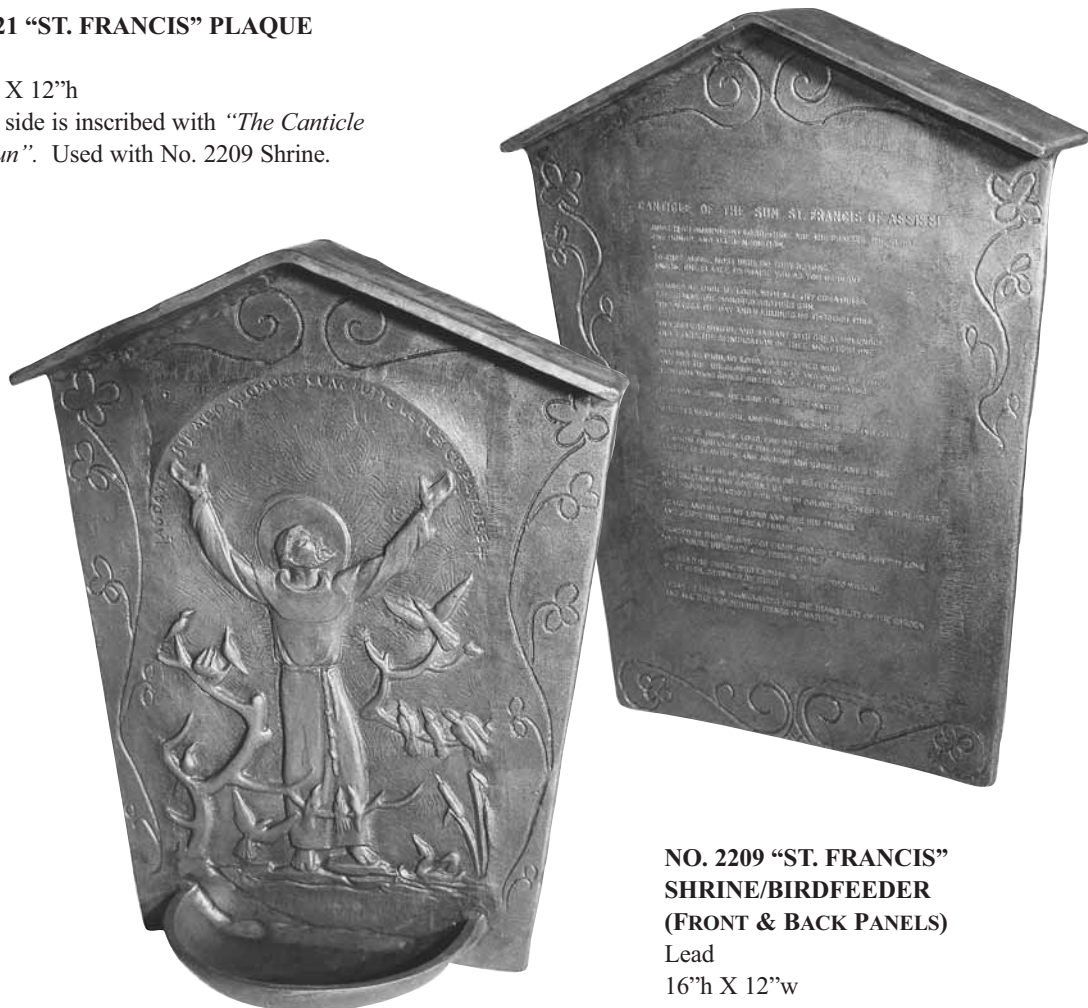
*Most high omnipotent Lord, Thine are the praises, the glory, the honor,  
and all benediction.  
To Thee alone, Most High, do they belong,  
And no one is able to praise You as You deserve.  
Praised be Thou, my Lord, with all Thy creatures,  
Especially the honored Brother Sun,  
Who makes the day and illumines us through Thee.  
And he is beautiful and radiant with great splendor,  
And bears the signification of Thee, Most High One.  
Praised be Thou, my Lord, for Brother Wind,  
And for the air, cloudy and clear and every weather,  
By which Thou givest sustenance to Thy creatures.  
Praised be Thou, my Lord, for Sister Water.  
Which is very useful and humble and precious and chaste.  
Praised be Thou, my Lord, for Brother Fire,  
By whom Thou lightest the night,  
And he is beautiful and jocund and robust and strong.  
Praised be Thou, my Lord, for our sister Mother Earth,  
Who sustains and governs us,  
And produces various fruits with colored flowers and herbage.  
Praise and bless my Lord and give Him thanks  
And serve Him with great humility.  
Praised be Thou, O'Lord, for those who give pardon for Thy Love  
And endure infirmity and tribulation.  
Blessed be Thou, who endure in peace, who will be,  
Most High, crowned by Thee!  
I pray to Thee in thanksgiving for the tranquility of the garden  
And all the wondrous things of nature.*

### NO. 2221 “ST. FRANCIS” PLAQUE

Lead

7 1/2”w X 12”h

Reverse side is inscribed with “The Canticle of the Sun”. Used with No. 2209 Shrine.



### NO. 2209 “ST. FRANCIS” SHRINE/BIRDFEEDER (FRONT & BACK PANELS)

Lead

16”h X 12”w

**NO. 2151 HEAD OF CHRIST PLAQUE**

Lead  
9"x14"h  
Available in Bronze.



**NO. 1785 LARGE CARTOUCHE**

Cast Stone  
72"h X 52"w, 11" projection, provided with suitable anchoring in the back.  
This has a flat back and can be mounted on a wall.  
This piece can also be lettered for a sign by others.

**NO. 4524 GARDEN PLAQUE**  
Cast Stone, 38"diameter X 2 1/2" thick

Design by Joseph Boulton.

This massive and beautiful ornament can be used against a wall, elevated or low down, or it can be used in the ground itself and it was actually used as a marrying plaque in a church in New Hampshire.

*"The Kiss of the Sun for Pardon, The Song of the Birds for Mirth, One is nearer God's Heart in a Garden-Than anywhere else on Earth."*

