



Birdbaths

BIRD BATHS



NO. 9 ANTIQUE BIRDBATH

Cast Stone
48”h X 23” diameter
Figure is 14”h.



NO. 41 BIRDBATH

Cast Stone
Top 24”h X 18 3/4” diameter.
Can be made with or without birds.



**NO. 117 BIRDBATH ON DOLPHIN
PEDESTAL**

Cast Stone
22”h X 29” diameter



NO. 1342 BIRDBATH

Cast Stone
18”h X 16” diameter
Base 12 1/2” X 12 1/2” X 7 1/2”h
English model.



NO. 1343 BIRDBATH

Cast Stone
25 1/2”h
Base 16” X 16” square



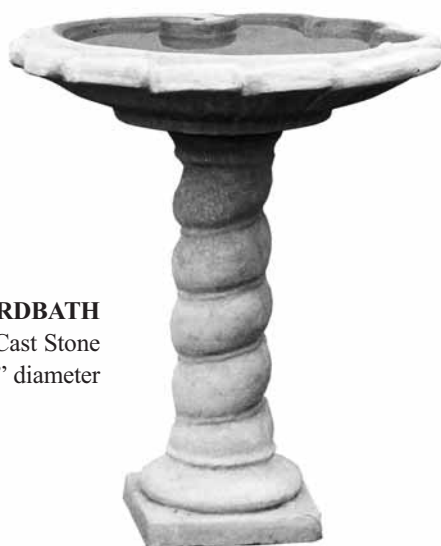
NO. 1142 BIRDBATH SHELL & PEDESTAL

Cast Stone
31"h X 28"w



NO. 528 BIRDBATH

Cast Stone
31"h, Bowl is 23" diameter
Pedestal base can be purchased separately.



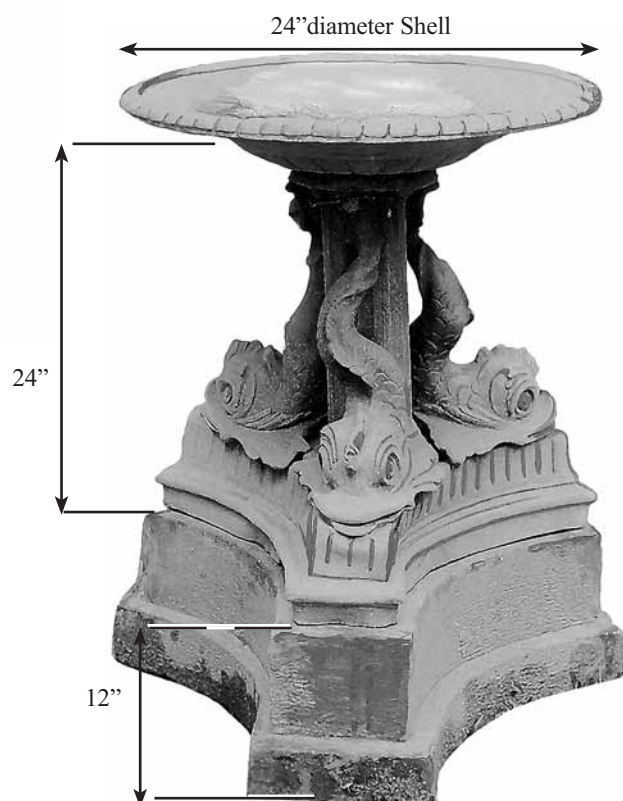
NO. 88 BIRDBATH

Cast Stone
28"h, Bowl 24" diameter



NO. 524 BIRDBATH

Cast Stone, 10"h
28" diameter
Can be piped as fountain
water source.



**NO. 2215 DOLPHIN PEDESTAL
ON CAST STONE BASE WITH 24" SHELL**

Lead, 24"h
The dolphin base is set on a
12"h tri-form stone base.
Available in Bronze.

BIRD BATHS



NO. 576 BIRDBATH
Cast Stone
24" h X 23" diameter



NO. 574 BIRDBATH FOUNTAIN
Cast Stone, 24" h
Bowl, 15 1/2" diameter
Pool not available.



**NO. 149 WEIR FARM
BIRDBATH PEDESTAL**
Cast Stone, 28 1/2" h
Base, 9" diameter
Top, 7" diameter
Also shown in pedestal section.



NO. 241 RUSTIC BIRDBATH
Cast Stone
24" h X 21" diameter



NO. 1065 BIRDBATH
Cast Stone
36" h X 30" diameter
13 1/2" base.



NO. 831 BIRDBATH

Cast Stone

5"h X 20"l X 14"w

A reproduction of an English antique
found at Claydon House, England.



NO. 832 ARCHITECTURAL BIRDBATH

Cast Stone

6 1/4"h X 31"l X 23 1/2"w

Can be placed on the ground or a pedestal.
Suggest use with pedestal No. 507.



NO. 179 BIRDBATH SHELL

Cast Stone

18" X 22" X 4"h



NO. 527 BIRDBATH

Cast Stone

12 1/2"h

21"diameter



NO. 974 BIRDBATH

Cast Stone

22" diameter X 5"h

Modeled by Joseph Boulton. Strong, rugged.
Can sit on its own or on a pedestal.

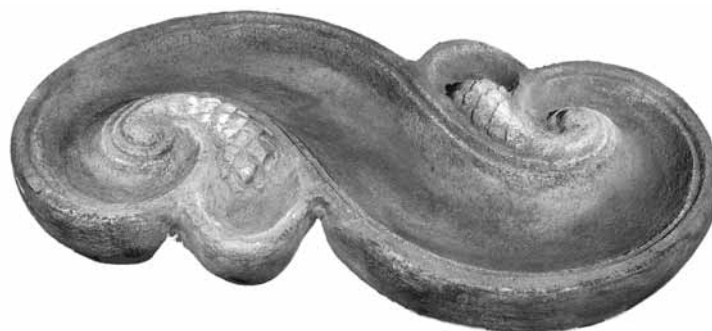


NO. 202 DEEP BIRDBATH

Cast Stone, 32"diameter X 7 1/2"h

NO. 202A SHALLOW BIRD BATH

32" diameter X 3 1/2"h



NO. 279 BIRDBATH

Cast Stone

34"l X 18"w X 7"h

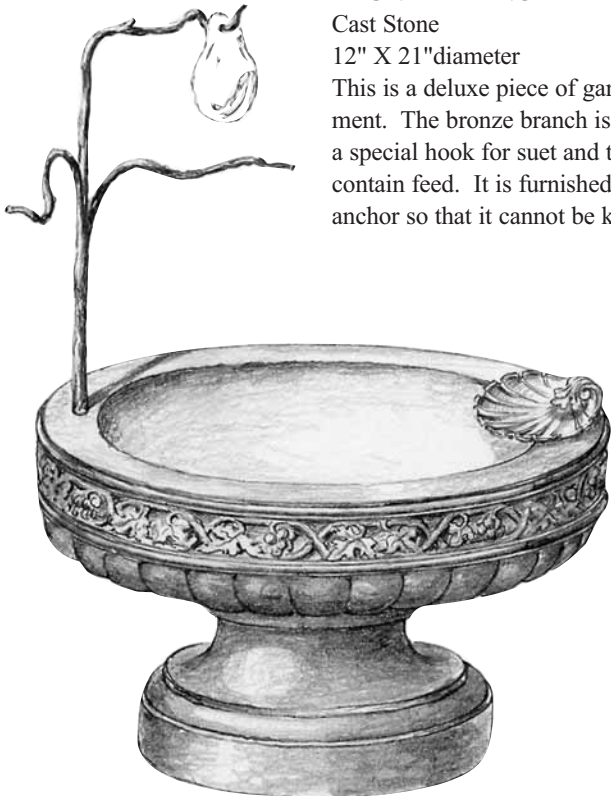
A large luxurious birdbath.

BIRD BATHS



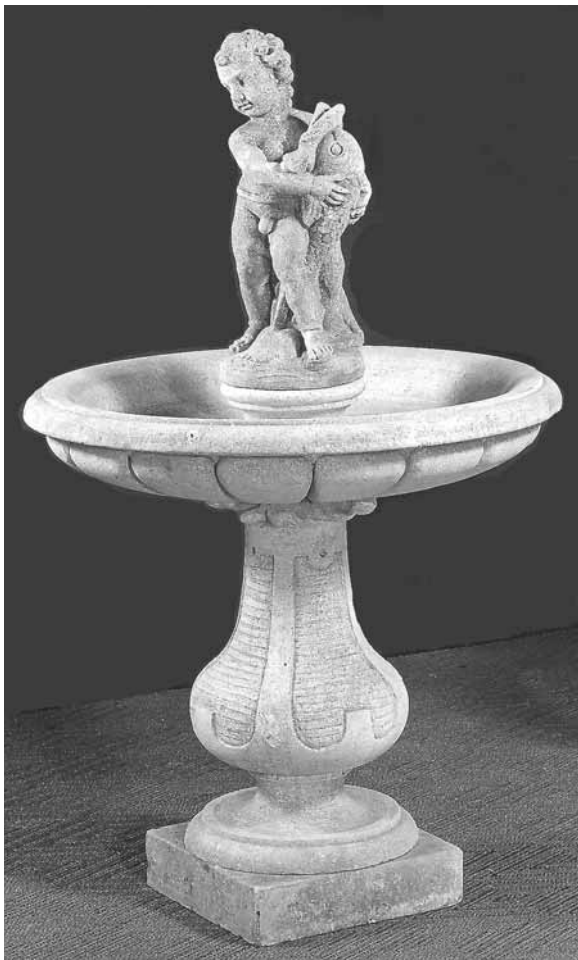
NO. 1231 BIRD BATH WITH COPPER DRIP

Cast Stone
23"h X 26" diameter
Note the copper drip tube for replenishment.



NO. 4799 BIRD BATH WITH BRONZE BRANCH

Cast Stone
12" X 21"diameter
This is a deluxe piece of garden equipment. The bronze branch is designed for a special hook for suet and the shell can contain feed. It is furnished with an anchor so that it cannot be knocked over.



NO. 997 BIRDBATH

Cast Stone
31 1/2"h X 29" diameter
The figure is 14"h. Other figures may be substituted.



NO. 284 BIRDBATH, FOUNTAIN OR FEEDER

Cast Stone
13"h X 16"w



NO. 830 THREE PIECE BIRDBATH

Cast Stone
13"h X 19" X 19"
Base 16" X 16" square



**“ST. FRANCIS”
SHRINE/BIRD
FEEDER**

Lead
16"h X 12"w

There is a small basin on the obverse side which acts as a foot to make it stand and which can be used as a bird feeder or to hold a votive candle. On the reverse side is the complete "Canticle of the Sun." Can be furnished with loop on top for hanging in tree.
Available in Bronze.



**NO. 2413 THREE
SHELL BIRDBATH**

Lead
16"w across the top
Available in Bronze.

**NO. 2209
(BACK VIEW)**

**NO. 2209
(FRONT VIEW)**



NO. 2221 “ST. FRANCIS” PLAQUE

Lead
7 1/2"w X 12"h
Used with No. 2209 Shrine. The reverse side has
beautifully inscribed, "The Canticle of the Sun."
Available in Bronze.

“The Canticle of the Sun”

*Most high omnipotent Lord, Thine are the praises, the glory, the honor,
and all benediction.
To Thee alone, Most High, do they belong,
And no one is able to praise You as You deserve.
Praised be Thou, my Lord, with all Thy creatures,
Especially the honored Brother Sun,
Who makes the day and illumines us through Thee.
And he is beautiful and radiant with great splendor,
And bears the signification of Thee, Most High One.
Praised be Thou, my Lord, for Brother Wind,
And for the air, cloudy and clear and every weather,
By which Thou givest sustenance to Thy creatures.
Praised be Thou, my Lord, for Sister Water.
Which is very useful and humble and precious and chaste.
Praised be Thou, my Lord, for Brother Fire,
By whom Thou lightest the night,
And he is beautiful and jocund and robust and strong.
Praised be Thou, my Lord, for our sister Mother Earth,
Who sustains and governs us,
And produces various fruits with colored flowers and herbage.
Praise and bless my Lord and give Him thanks
And serve Him with great humility.
Praised be Thou, O'Lord, for those who give pardon for Thy Love
And endure infirmity and tribulation.
Blessed be Thou, who endure in peace, who will be,
Most High, crowned by Thee!
I pray to Thee in thanksgiving for the tranquility of the garden
And all the wondrous things of nature.*

BIRD BATHS



NO. 2239 DANCING GIRL NO. 2445 ON SHELL
Lead, 32"h
With No. 2102 Shell, 21" diameter
Available in Bronze.



NO. 4658 BOWL ON SWAN PEDESTAL
Lead, overall approximately 54"h
Swan pedestal 26"h, 25" diameter
Bowl may be used alone as a birdbath or any figure may be added.
Available in Bronze.



NO. 2409 SHELL BIRDBATH ON LEGS WITH ENGLISH FIGURE
Lead
17"h X 15"w
The bird is optional.
Available in Bronze.



NO. 2441A ST FRANCIS BIRDBATH
Lead
19"h overall
15"w shell
Available in Bronze.



NO. 2208 FIGURES WITH SHELL
Lead, 25"h
Shell 15" diameter
Available in Bronze.



**NO. 2410S BIRDBATH WITH
SQUIRREL & BIRD**

Lead
15" diameter
Shell is set on a Lead rock.
Available in Bronze.



**NO. 2443 BIRDBATH
SHELL WITH GIRL
& FROG**

Lead
18"h X 15" diameter
Available in Bronze.

**NO. 2410S BIRDBATH WITH
SQUIRREL & BIRD**

Lead
15" diameter
Shell is set on a Lead rock.
Available in Bronze.



**NO. 2410S BIRDBATH WITH
SQUIRREL & BIRD**
Lead
15" diameter
Available in Bronze.



**NO. 2447 BASHFUL GIRL ON SHELL
WITH FROGS**

Lead
26"h X 15" diameter
May be used as fountain or birdbath.

NO. 2410 BIRDBATH

Lead
Available in two sizes
15" diameter X 9"h,
21" diameter X 11"h
Available in Bronze.

NO. 2175 WATERLILY

Lead
14 3/4" l X 11 3/4" w
Additional hand-formed sizes on
request.
Available in Bronze.

BIRD BATHS



NO. 2516 CATBIRD BIRDBATH

Lead
15"h
Available in Bronze.



NO. 2517 BIRDBATH WITH TWO BIRDS

Lead
11"h
Available in Bronze.



NO. 2519 PAN & PIPES BIRDBATH

Lead
15"h
Available in Bronze.



NO. 2826 SHELL & FROG BIRDBATH

Lead
24"w
Furnished so it can be piped for water or a recirculating pump. Base is No. 526, is 14" on the diagonal and can be used with any shell. Base is Cast Stone. Available in Bronze.

NO. 2520 THREE SONGSTERS BIRDBATH

Lead
11"h
Available in Bronze.



**NO. 2007A SHELL BIRDBATH
ON SPECIAL BASE**

Lead
36" diameter
Birdbath sits on a special Cast
Stone, fluted, ornamented base.
English model.



NO. 2024 BIRD BATH

Lead
14"h, 15" diameter
English Lead antique reproduction bird
feeder or font. Looks very attractive on a
Cast Stone block to get more elevation.
Available in Bronze.



NO. 2401 BIRD BATH SHELL ON LEGS

Lead
15" diameter
Available in Bronze.



**NO. 2402 BIRD BATH
ON LEGS**

Lead
15" diameter
Available in Bronze.



**NO. 2402B BIRD BATH WITH
ORNAMENTED FOOT**

Lead
15" diameter
Available in Bronze.



**NO. 2402C ENGLISH
BIRD BATH**

Lead
15" diameter
Available in Bronze.

BIRD BATHS



**NO. 1551B BIRDBATH
WITHOUT BIRDS**
Cast Stone, 10"h
Also available with Lead feeder.



**NO. 2889B CHILD WITH FLUTES
ON BASE W/SNAIL**
Lead, 17"h
Set on Lead bird bath base. Can be had
with different arrangements of animals.
Available in Bronze.



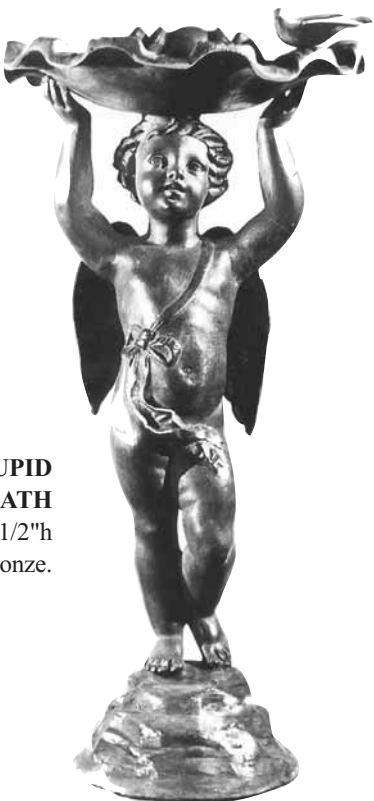
**NO. 1551C BIRDBATH
WITH LEAD SQUIRREL**
NO. 2140
Cast Stone feeder
Also available in Lead.



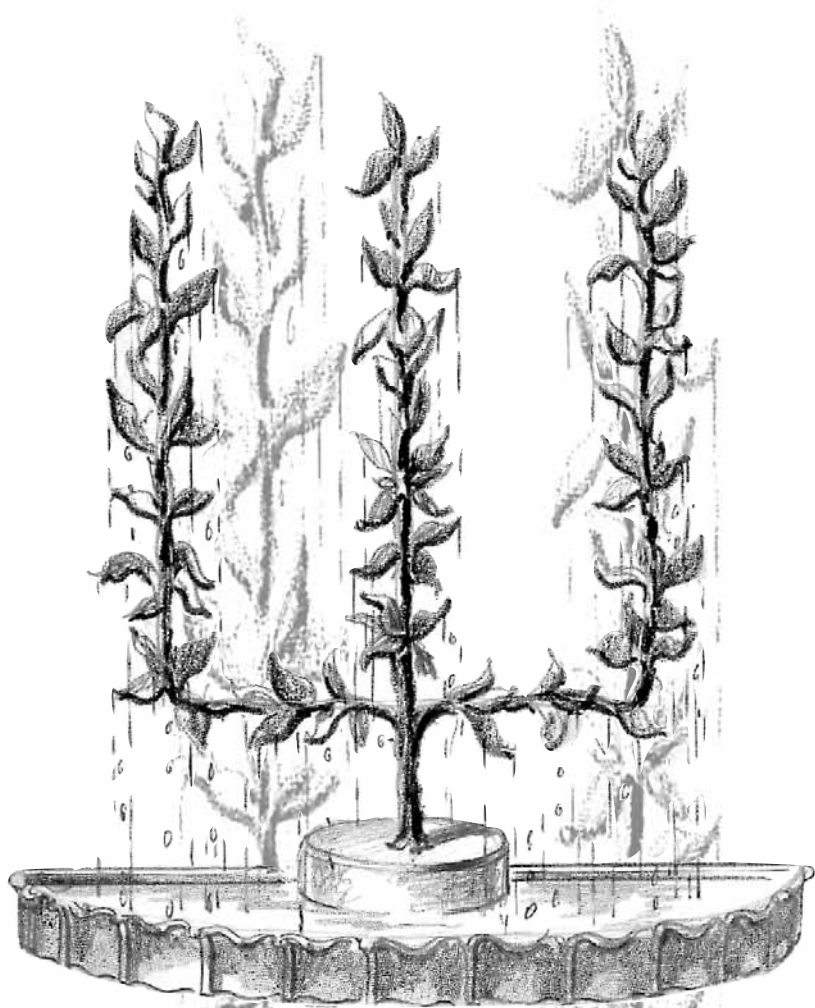
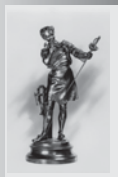
NO. 2885 "WENDY" FIGURE
Lead, 38"h
Antique reproduction. Can be piped
for water from shell.



**NO. 2407 CUPID
BIRDBATH**
Lead, 30 1/2"h
Available in Bronze.



**NO. 2406 CUPID
SHELL BIRDBATH**
Lead, 30 1/2"h
Available in Bronze.



RAINTREES

The idea of the raintree came from the East where the people deeply felt great benefit from the rain as a gift from heaven.

Concerning the workings of the raintree, the water is pumped up into the very top branches, allowing it to run downward over the lower branches and leaves. The rainfall from these branches should be gentle and not a spray. The owner must be prepared to adjust and bend the leaves into proper alignment if they are not feeding adequately. Also, it is of paramount importance to keep these fountains clean and free of debris at all times. If the branches fill with matter, the tubes which supply the “rain” will become clogged. For best results a regular cleaning cycle is recommended and water should be filtered to remove all debris.

Concerning the size of the pool you must use, assuming that the tree in general is round or half-round, the pool must be double the radius of the tree. The water is then recirculated with a pump. (See diagram on the next page.)



NO. 893 RAIN TREE

All Copper raintree, 3', 4', 5', 6', 7', 8', 9', 10' h.

Pumpcase is extra. Pool diameter should not be less than 1 1/2 times the height of the tree.



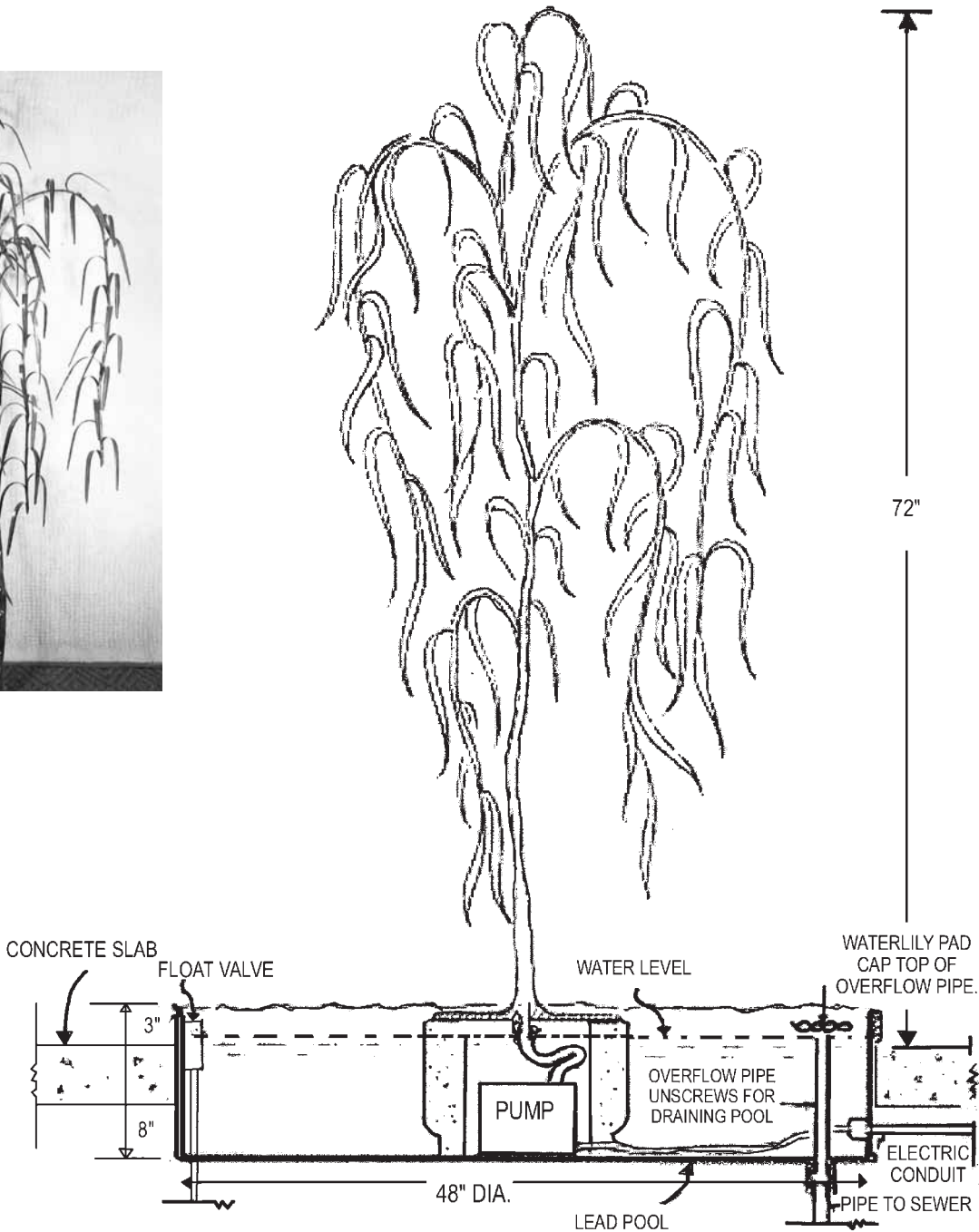
**NO. 4092 WEEPING
WILLOW RAIN TREES**
Copper , 6'h X 6'w
Other sizes to order.
Green patina, piped for water.

NOTE:
*The height dimension is
measured from the floor to
the top of the tree. All
raintrees are custom made.
Sizes shown are suggested
and can be customized
within reason.*
***All raintrees are made of
Bronze and Copper.***

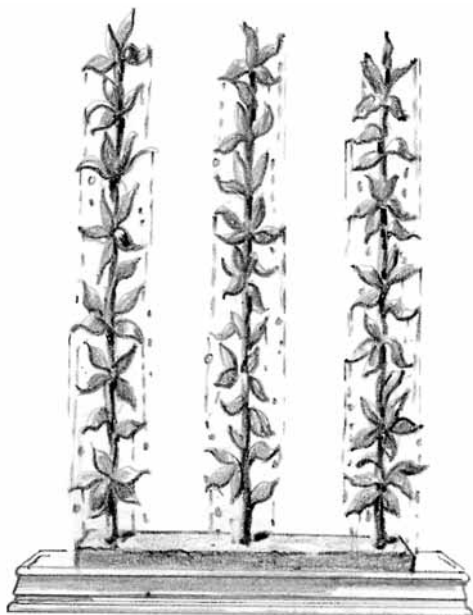
THE WORKINGS OF A RAIN TREE



**NO. 4094
WEEPING
WILLOW
RAINTREE**
Copper , 6'h

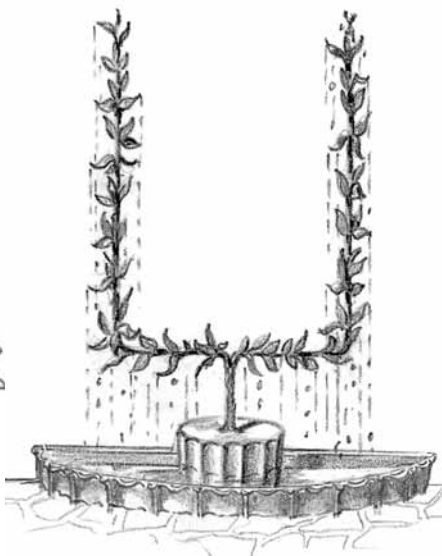


RAINTREES



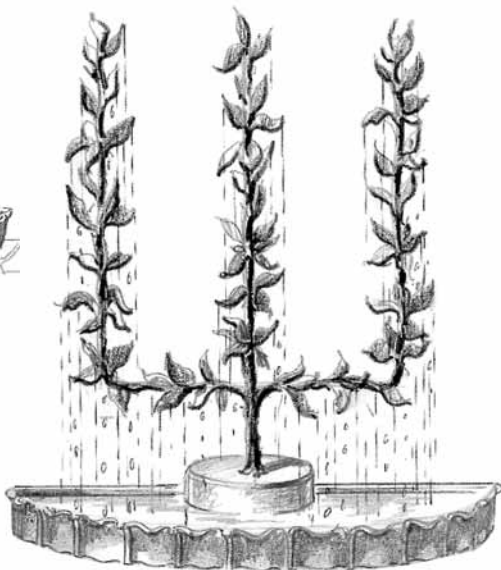
NO. 4630 ESPALIER RAINTREE

Bronze, 6'h X 4'w
The base is the pumpcase.
Pool is purchased separately.



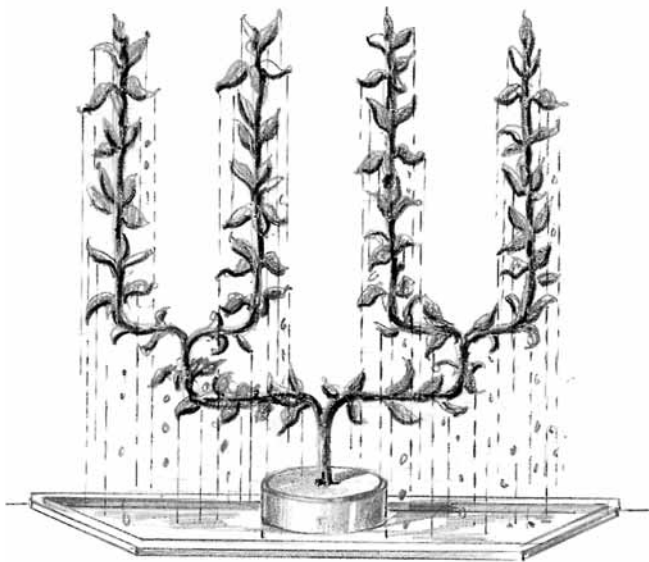
NO. 4631 ESPALIER RAINTREE

Bronze, 6'h X 3'w
The base is the pumpcase.
Pool is purchased separately.



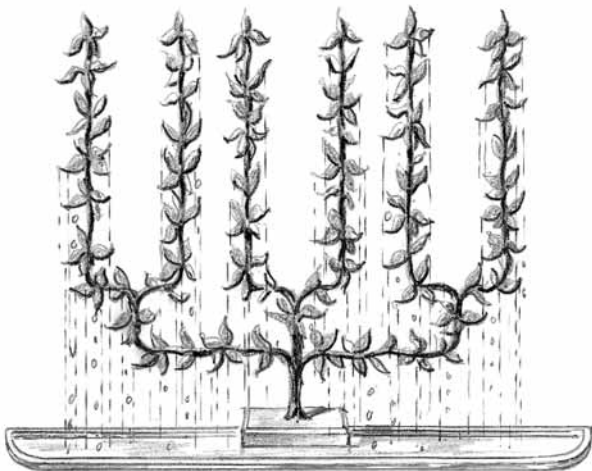
NO. 4632 ESPALIER RAINTREE

Bronze, 6'h X 3'w
The base is the pumpcase.
Pool is purchased separately.



NO. 4633 ESPALIER RAINTREE

Bronze, 6'h X 6'w
The base is the pumpcase. Pool is
purchased separately.



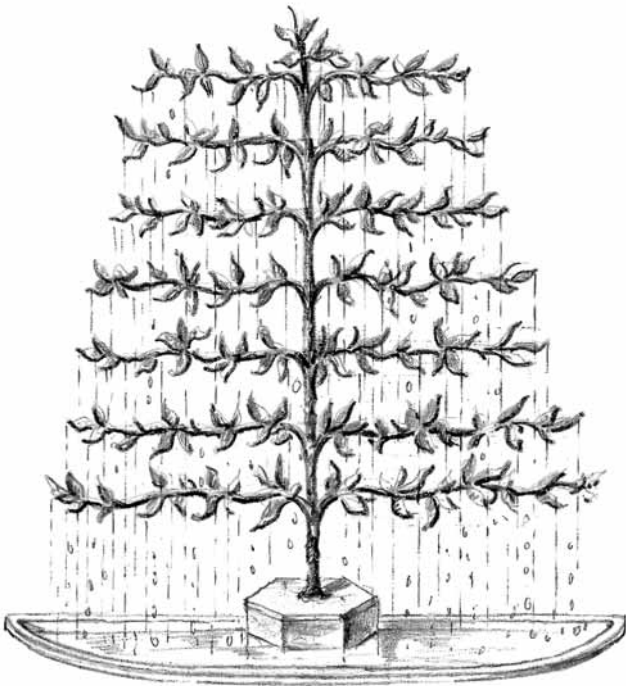
NO. 4635 ESPALIER RAINTREE

Bronze, 6'h X 6'w
The base is the pumpcase. Pool is purchased separately.

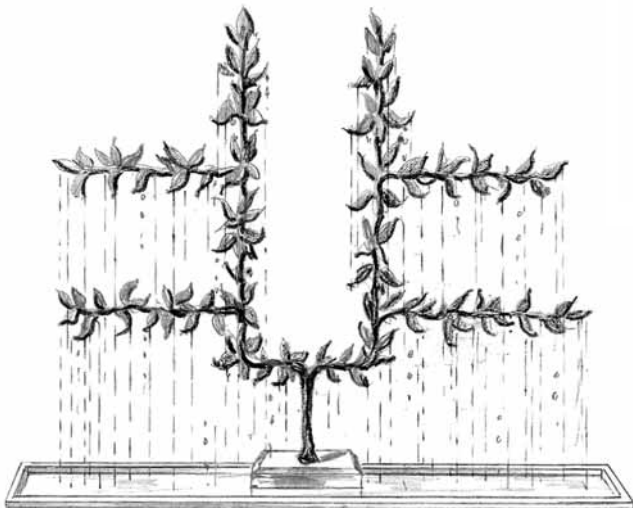
NOTE:
The height dimension is measured from the floor to the top of the tree. All raintrees are custom made. Sizes shown are suggested and can be customized within reason.
All raintrees are made of Bronze and Copper.



NO. 4629 ESPALIER RAIN TREE
Bronze, 6'w



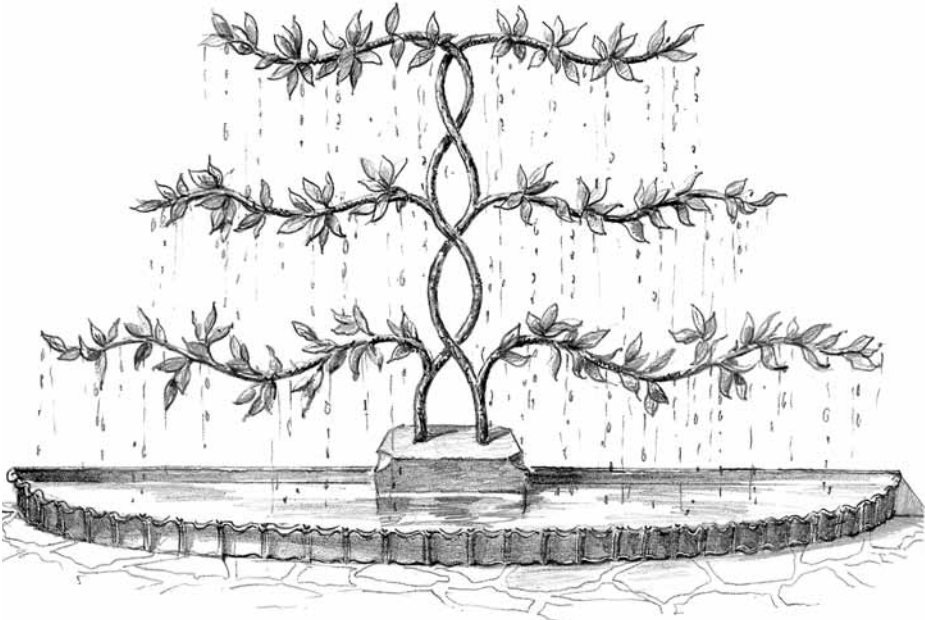
NO. 4637 ESPALIER RAIN TREE
Bronze, 8'h X 6'w
The base is the pumpcase. Pool is purchased separately.



NO. 4634 ESPALIER RAIN TREE
Bronze, 6'h X 6'w
The base is the pumpcase.
Pool is purchased separately.

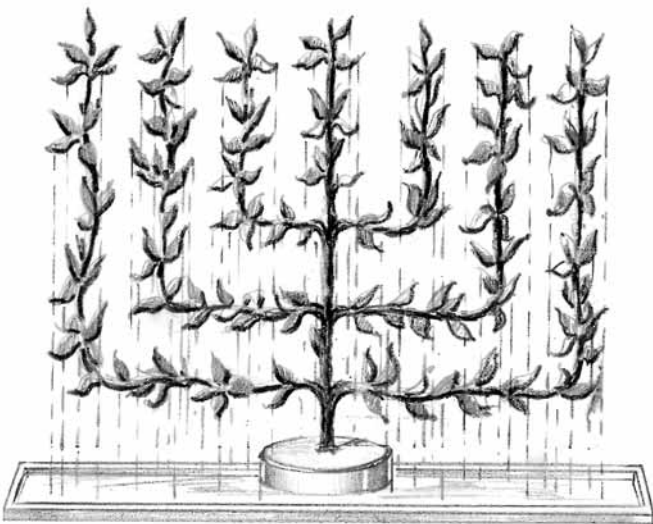
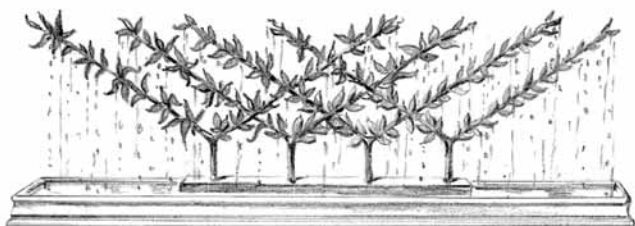
NOTE:
The height dimension is measured from the floor to the top of the tree. All raintrees are custom made. Sizes shown are suggested and can be customized within reason. All raintrees are made of Bronze and Copper.

NO. 4638 ESPALIER RAIN TREE
Bronze, 6'h X 8'w
The base is the pumpcase.
Pool is purchased separately.

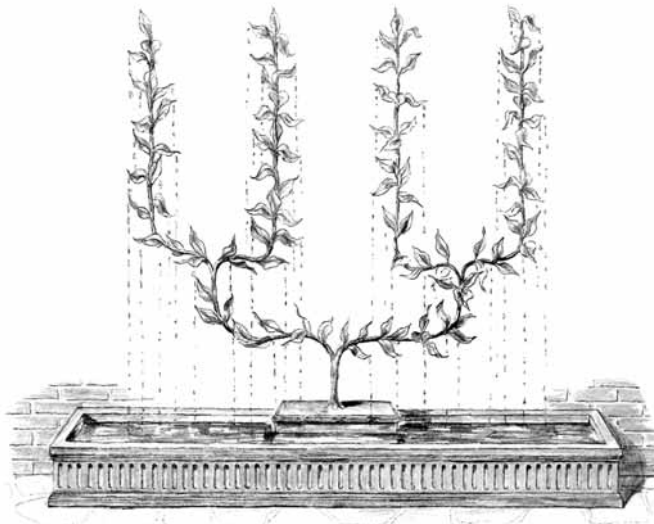


RAINTREES

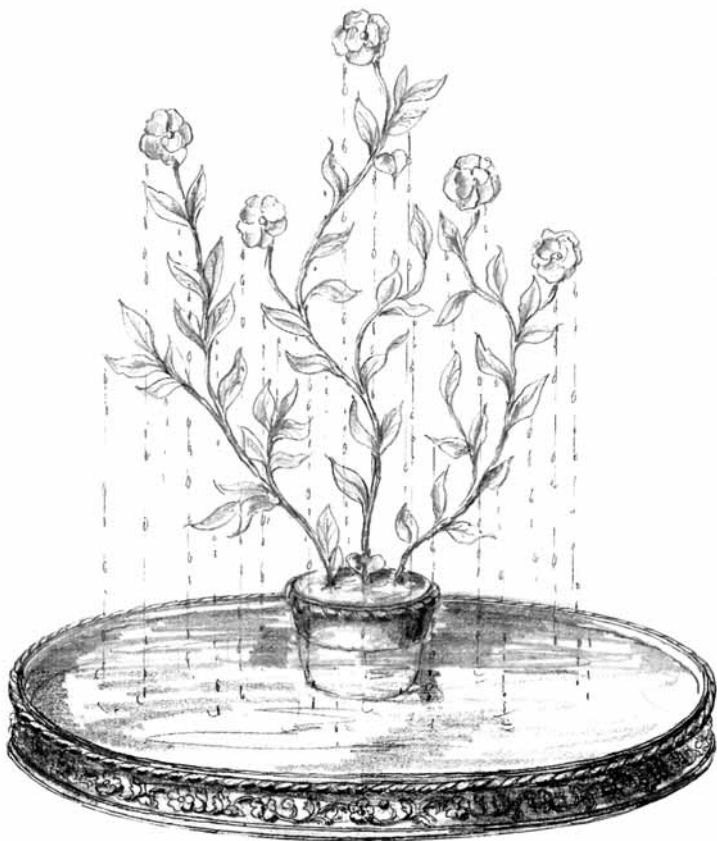
**NO. 4636 ESPALIER
RAINTREE**
Bronze, 6'h X 8'w
The base is the pumpcase.
Pool is purchased separately.



NO. 4639 ESPALIER RRAINTREE
Bronze
Each tree is 6'w X 3'h
The base is the pumpcase.
Pool is purchased separately.



**NO. 4715 RRAINTREE WITH
CAST STONE POOL**
Bronze
6'w X 6'h, pool 8'l X 10'h overall X 22" w
Other recommendations can be made on a pool. Raintree
uses design No. 4633. Tree should be connected back to a
wall to overcome any vibration.



NO. 4719 FLOWERING RRAINTREE WITH LEAD POOL
Copper, 4'6" h
The pump is located in the Lead base of the Raintree.
The Lead pool is made of border No. 2346, and is
5" h X 66" diameter.

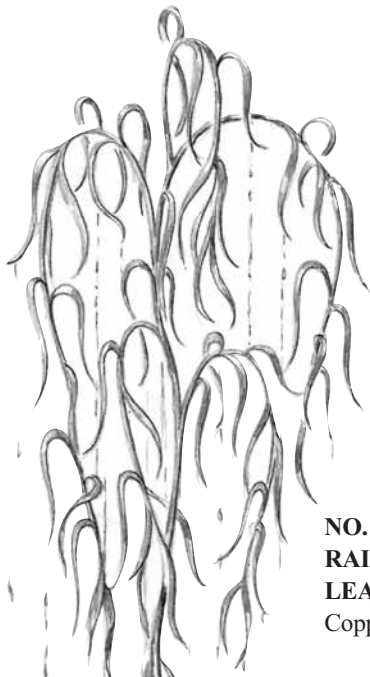
NOTE:
*The height dimension is
measured from the floor to
the top of the tree. All
raintrees are custom made.
Sizes shown are suggested
and can be customized
within reason.
All raintrees are made of
Bronze and Copper.*



NO. 4716 WILLOW RAIN TREE WITH LEAD POOL
Copper, 6'h, pool 3' X 6'
The pool is ornamented with Zodiac ornaments and the pump is contained in the pumpcase. It is designed to go against a wall. However, it can be made to work in the full round and it can be made to be illuminated. Pool is made from Lead.



NO. 4717 WILLOW RAIN TREE WITH LEAD PUMPCASE
Copper
6'h X 2'6"w, pump case
16" diameter X 8"h
Rain tree is designed to go in a half round pool and should be located close to a wall. Pool size should be at least 6' wide and project not less than 48".



NO. 4840 WILLOW RAIN TREE WITH LEAD POOL
Copper, 6'h

NOTE:
The height dimension is measured from the floor to the top of the tree. All raintrees are custom made. Sizes shown are suggested and can be customized within reason.
All raintrees are made of Bronze and Copper.



NO. 4554 CATTAIL FOUNTAIN
Bronze, 30"h
Pump can be located in base.
Special sizes to order.



