

# ROOSTERS



**NO. 101 ROOSTER**  
Cast Stone, 23 1/2" h



**NO. 1330 TURKEY**  
Cast Stone, 20" h and 24" h  
Available in two sizes:  
20" h with a 9" diameter base.  
24" h with a 11 1/2" X 12" base.



**NO. 1625 ROOSTER**  
Lead  
Available in two heights:  
18" h or 24" h  
Available in Bronze.



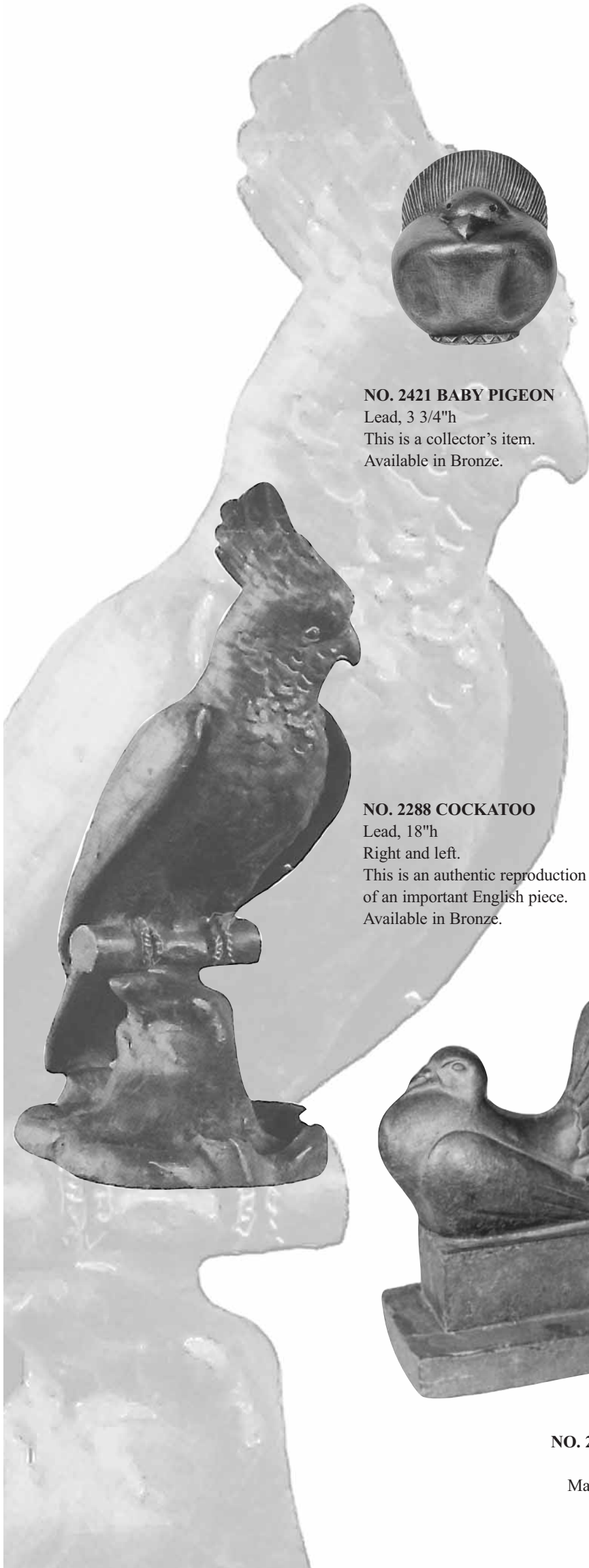
**NO. 2197 FRENCH ROOSTER**  
Cast Stone, 26" h  
Available in Lead or Bronze.



**NO. 2434 CHANTICLEER ROOSTER**  
Lead, 14" h  
Available in Bronze.



**NO. 2435 ROOSTER**  
Lead, 9 1/2" h  
Available in Bronze.



**NO. 2421 BABY PIGEON**  
Lead, 3 3/4" h  
This is a collector's item.  
Available in Bronze.



**NO. 2421**  
(SIDE VIEW)



**NO. 2288 COCKATOO**  
Lead, 18" h  
Right and left.  
This is an authentic reproduction  
of an important English piece.  
Available in Bronze.



**NO. 542 PIGEON**  
Lead, 10" l  
Available in Bronze.



**NO. 2184 FANTAIL PIGEON**  
Lead, 5" h  
May be used as book ends.  
Available in Bronze.



**NO. 415 PELICAN**  
Cast Stone  
15 1/2" h X 11 1/2" l



**NO. 973 PELICAN**  
Cast Stone, 21" h



**NO. 2405 (LEFT)**

**NO. 2405**  
(SIDE VIEW)

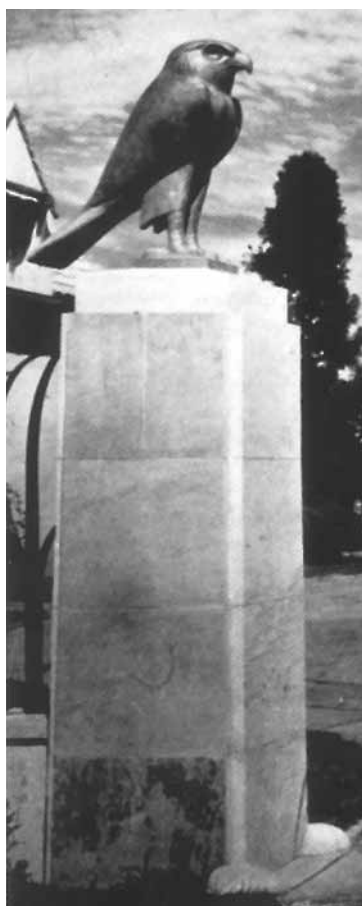


**NO. 2405 ENGLISH PEACOCK**

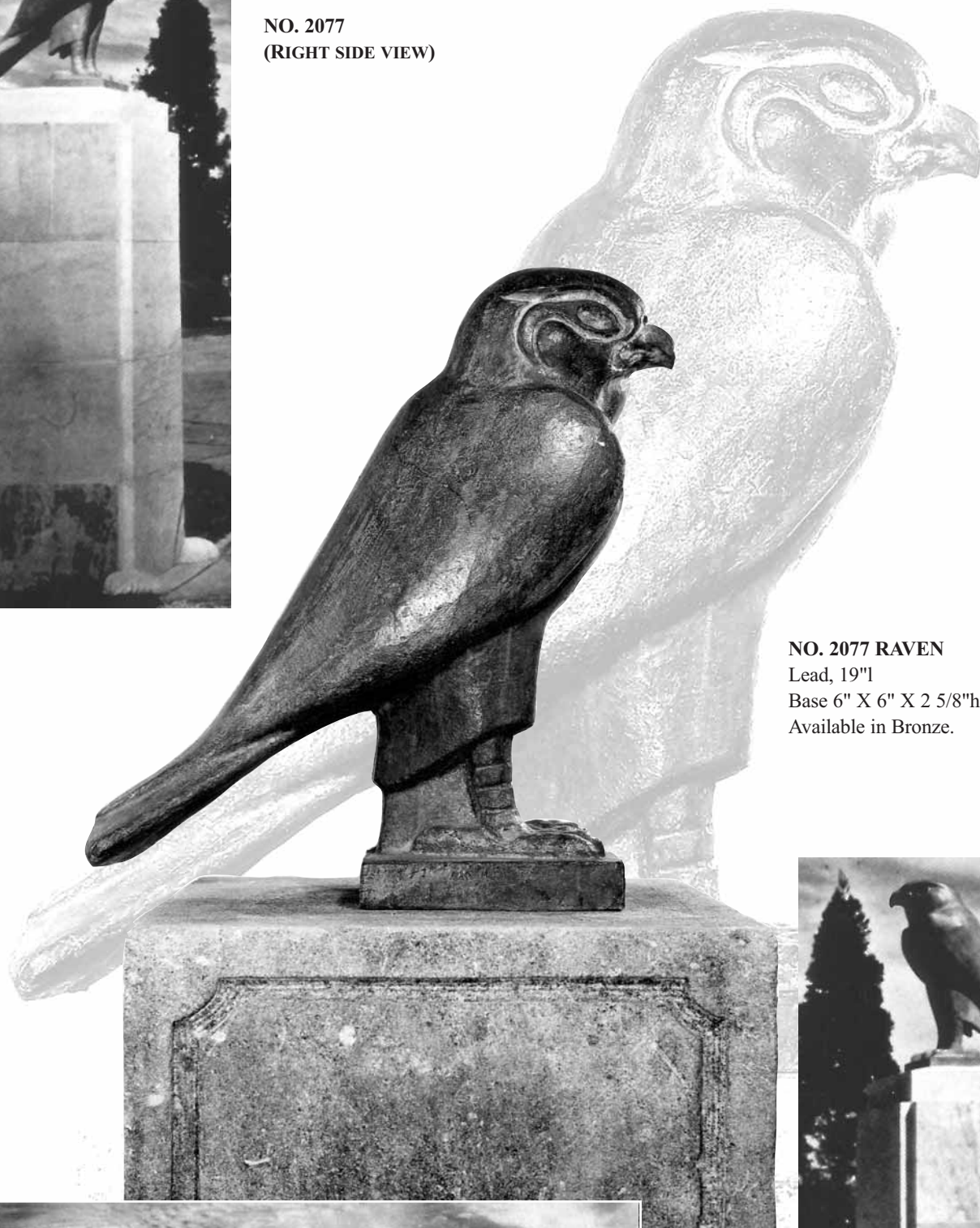
Lead, 24" h  
Right or left.  
Has tail socket for either lead tail or  
Stainless Steel topiary tail.  
Available in Bronze.



**NO. 2405 (RIGHT)**



NO. 2077  
(RIGHT SIDE VIEW)



NO. 2077 RAVEN  
Lead, 19"l  
Base 6" X 6" X 2 5/8"h  
Available in Bronze.



NO. 2077  
(LEFT SIDE VIEW)



**NO. 2060 TURKEY**  
Lead  
25 1/4" h X 13" w  
This turkey can be furnished with the head looking to the right, left or straight ahead. The tail is removable so that a topiary frame may also be used.  
Available in Bronze.



**NO. 975 SENTINEL OWL**  
Cast Stone, 36" h  
Base 14" diameter  
The Great Sentinel Owl by Joseph Bolton.  
This is truly a magnificent and heroic piece of work.  
Available in Lead or Bronze.

**NO. 1554 BEE**  
Lead  
3 1/2" h X 4 1/2" w  
Available in Bronze.



**NO. 2142 FANTAIL PIGEON**  
Lead, 11" h  
English model.  
Available in Bronze.



**NO. 4213 OWL**

Bronze  
8"h

Design by Joseph Boulton.  
Owl made in statuary  
woody brown patina with  
gold highlights looking  
through the finish.

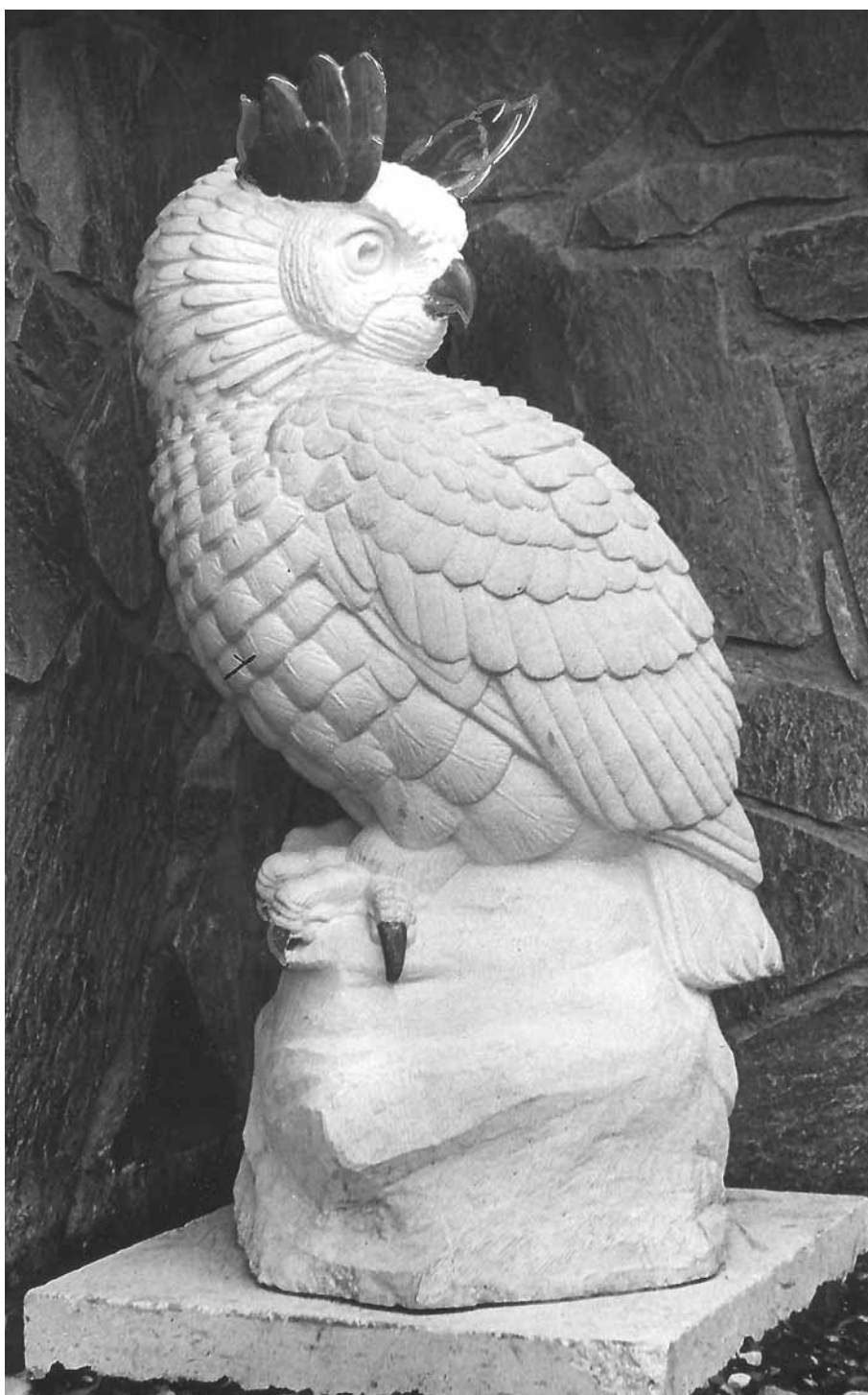


**NO. 4992 OWL**

Bronze, 9"h

Design by Joseph Boulton.  
It should be mounted on a piece  
of marble 6" in cube. This is a  
companion piece to the Owl  
No. 4213, and this likewise is a  
fine collector's item. It is a  
signed piece with the artist's  
permission and a limited edition.

It is recommended that  
they be bought in pairs.



**NO. 998 OWL WITH LEAD HORNS**

Cast Stone, 45"h

The massive owl by Joseph Boulton. This piece of sculpture is  
breathtakingly beautiful. It is one of the most impressive animal  
sculptures we have in our collection.



**NO. 4535 OWL**

Lead

Available in two sizes:  
8"h & 11"h.

Design by Geraldine Lewis-Amendole.  
Available in Bronze.



NO. 2888 (FRONT VIEW)



NO. 2888 (BACK VIEW)

**NO. 2888 OWL**

Cast Stone

21 1/2"h

Design by Joseph Boulton.

The owl is the only bird that can turn his head 360 degrees, and Mr. Boulton has done a two-faced owl known as the Janus; one face is smiling and the other is grim.

Available in Lead or Bronze.



**NO. 1292 MOTHER OWL  
WITH CHICK IN NEST**

Cast Stone, 30"h



**NO. 6 LION WITH SHIELD**

Cast Stone, Available in two sizes:  
20"h, Base 6" X 11 1/2" &  
30"h, Base 11" X 14".



**NO. 1358 LION WITH SHIELD**

Cast Stone, 48"h  
Base 24 1/2" X 16 1/2"  
Available in left or right.  
Exceptionally fine detail and model.



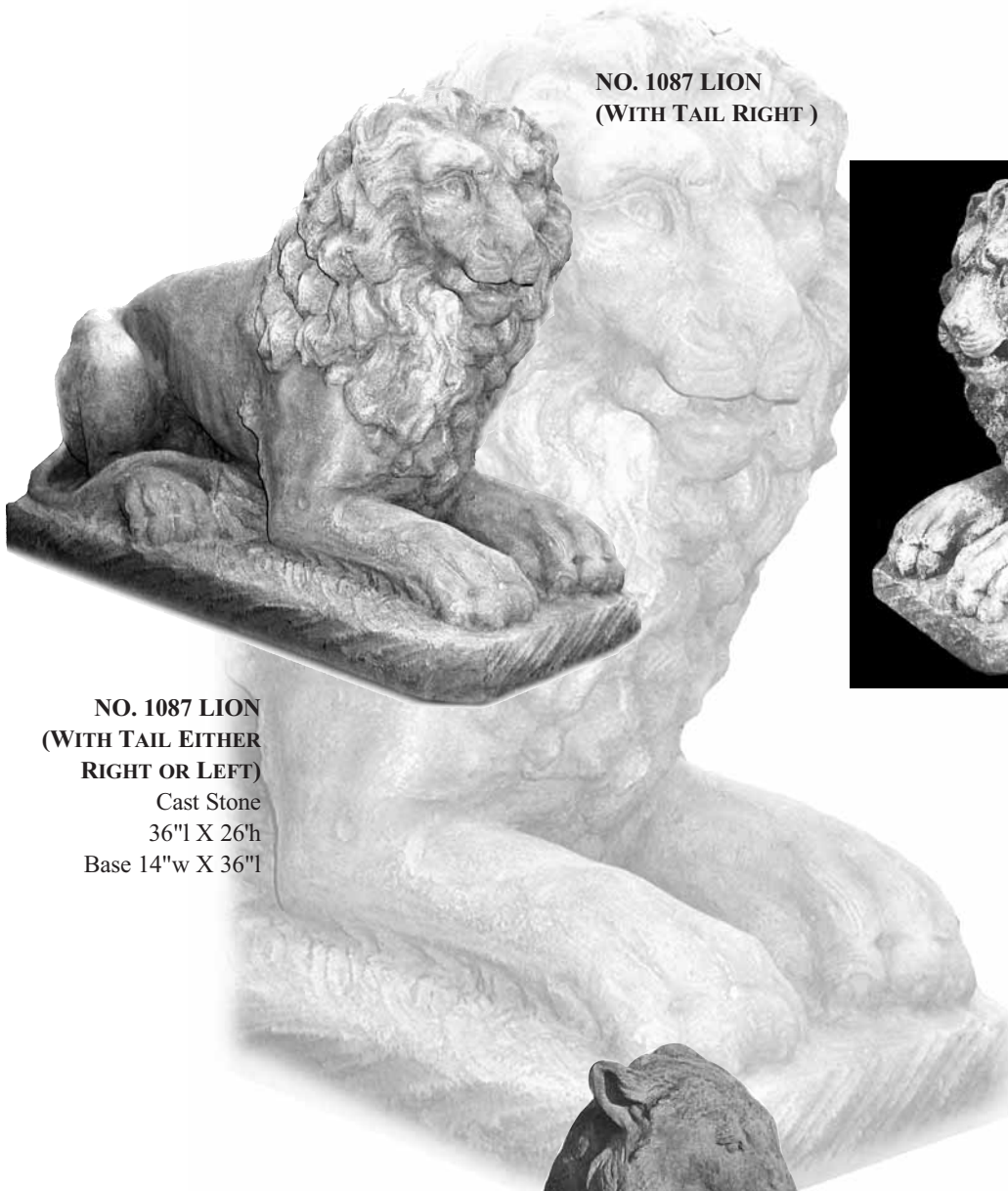
**NO. 1085 LION W/ ORB**

Cast Stone, 36"h  
Orb ball is Bronze and can be gilded  
or verde patina.





# LIONS



**NO. 1087 LION**  
(WITH TAIL RIGHT )



**NO. 1087 LION**  
(WITH TAIL LEFT)

**NO. 1087 LION**  
(WITH TAIL EITHER  
RIGHT OR LEFT)  
Cast Stone  
36"l X 26"h  
Base 14"w X 36"l



**NO. 1307 LIONESSE**  
Cast Stone  
60"l X 28"h  
Base 19"w X 60"l

**NO. 1308 LION**  
Cast Stone  
26 1/2"h X 46"l X 20"w  
The base is 45 1/2" l X 20"w





**NO. 1359 LION**  
Cast Stone  
34"h X 54"l X 19"w  
Base 14"w X 42"l X 4"h



**NO. 1768 SLEEPING LION**  
Cast Stone  
Left; 19 1/2"h, Base 18"w X 48"l



**NO. 1769 SLEEPING LION**  
Cast Stone  
Right; 19 1/2"h, Base 18"w X 48"l

# LIONS



**NO. 2063 ST. STEVEN'S  
LION**  
Lead, 15"h  
Perfect reproduction of  
famous original.  
Available in Bronze.



**NO. 1151 LION WITH  
BALL  
FACING RIGHT OR  
LEFT**  
Cast Stone, 28"h  
Base 26"l X 12"w



**NO. 5422 LION HEAD**  
Bronze  
19"h X 14"w X 9" projection



**NO. 481 WINGED LION  
BENCH END**

Cast Stone  
48"h X 24" d X 8 3/4" w  
*Also See Bench Section.*  
This bench design is not complete  
as of printing date. Can also be  
used as an entrance ornament in  
conjunction with a stone wall.  
Inquiries welcome.



**NO. 5564 CROUCHING CAT**

Cast Stone  
15"l X 7"w X 8"h  
French version.  
Available in Bronze.



**NO. 494 KITTEN**

Cast Stone, 6 1/2"h  
Available in Lead or Bronze.



**NO. 244 DOG WITH LEAD COLLAR**

Cast Stone, 20"h  
Base 42"l X 14"w



**NO. 6136 DALMATIAN DOG**

Cast Stone  
27"l X 16"h X 13"w,  
Base 30"l X 16"w X 4"thick  
This is the only piece which is painted white with black spots. Will require periodic repainting. An antique reproduction with great charm.



**NO. 2588 SITTING POODLE**

Cast Stone, 21"h



**NO. 1148 DOG**

Cast Stone, 16"h  
Base 11" X 8"



**NO. 272 DOG WITH BASKET**  
Cast Stone, 24"h  
Handle of basket is made of  
stainless steel rope.



**NO. 4699 FEMALE DOG**  
Cast Stone  
46"h, base 21"w X 19"l



**NO. 2232 (LEFT)**

**NO. 2232 DOG  
(LEFT AND RIGHT)**  
Lead, 24"h  
Each sold separately.  
Available in Bronze.



**NO. 2232 (RIGHT)**



**NO. 1900 DOG**

Cast Stone

47 1/2"h, Base 51"l X 27"w

This Cast Stone dog, furnished with a Lead tail, is completely reinforced and weighs approximately 600 lbs. This nostalgic piece was found in an antique shop near Philadelphia. In the square column, next to which the dog is standing, is a Bronze pipe reinforcement which is threaded to receive other devices which can increase the height of the column.



**NO. 1906 DOG WITH POST AND KNOB**



**NO. 4712 DOG**

Lead, 36"h

Base is 22"l X 14"w and is 5 1/2" thick.

Available in Bronze.

**NO. 4713 DOG**

Lead, 36"h

Base is 22"l X 14"w and is 5 1/2" thick.

Available in Bronze.



**NO. 1147 DOG**  
Cast Stone, 28"h  
Base 11" X 15". Facing left or right.



**NO. 2468 DOG'S HEAD**  
Cast Stone  
10"h X 12" projection  
Can be piped.  
Available in Lead or Bronze.

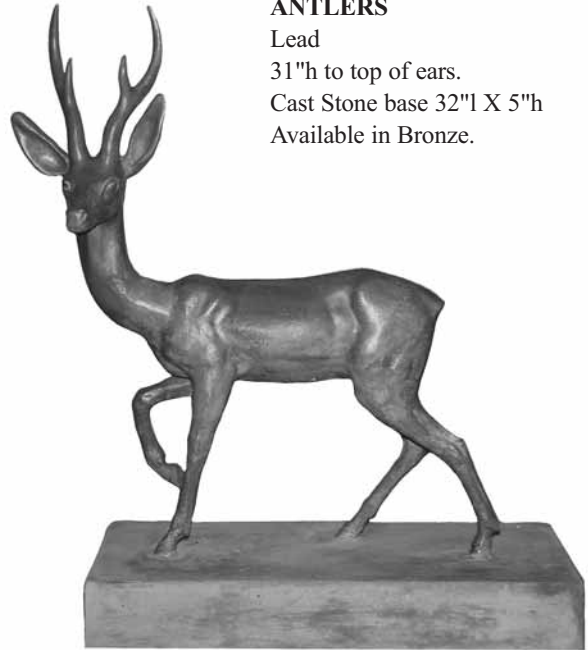


**NO. 1681 DOG HEAD**  
Lead  
6"w X 7 1/2"h X 8" Projection  
Can be piped.  
Available in Bronze.



**NO. 2474 DEER WITHOUT ANTLERS**

Lead  
31" h to top of ears.  
Cast Stone base 32" l X 5" h  
Available in Bronze.



**NO. 2473 DEER WITH ANTLERS**

Lead  
31" h to top of ears.  
Cast Stone base 32" l X 5" h  
Available in Bronze.



**NO. 4607 DEER**

Lead  
37 1/2" h X 30" l  
This model was found in Italy.  
The legs and stomach are reinforced  
when made in Lead.  
Available in Bronze.



**NO. 4792 DEER WITH ANTLERS**

Lead, 46" h  
Cast Stone Base, 32" l X 5" h  
The deer is 31" h to the top of the ears. The Bronze antlers extend another 15" from the top of the head. This is an extremely decorative piece of sculpture.



**NO. 917 DEER**

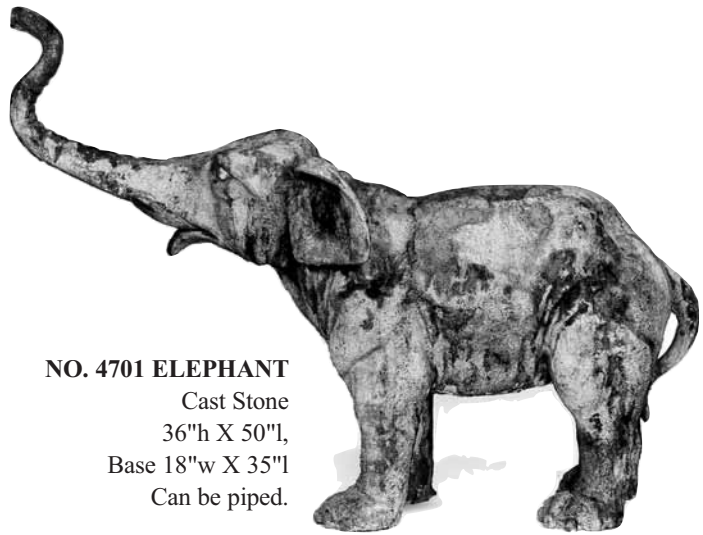
Cast Stone  
19 1/2" h X 24" l  
Available in Bronze.



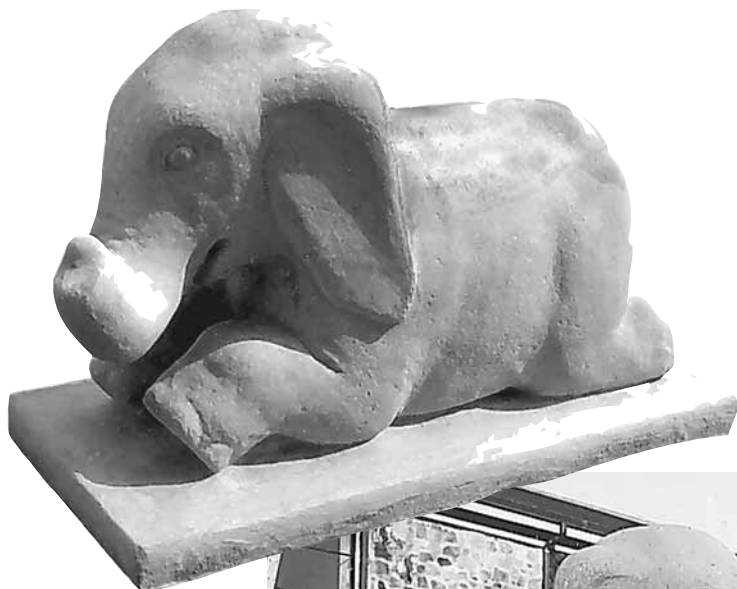
# ELEPHANTS & HIPPOS



**NO. 551 BURMESE ELEPHANT**  
Cast Stone  
22" h X 24" l



**NO. 4701 ELEPHANT**  
Cast Stone  
36" h X 50" l,  
Base 18" w X 35" l  
Can be piped.



**NO. 270 ELEPHANT**  
Cast Stone, 44" l  
Available as "whimsical" with curved trunk  
or with trunk pointing  
straight ahead.



**NO. 1145 ELEPHANT GARDEN SEAT FACING LEFT**  
Cast Stone, 20" h  
Base 10" w X 14" l



**NO. 278 HIPPO**  
Cast Stone  
20" l X 10" h X 10" w  
Can be piped upwards at end of nose.



**NO. 2825 HIPPOPOTAMUS**  
Cast Stone  
60" l X 28" h. Base 48" w x 25" l  
Can be piped. Very suitable as fountain piece or play area piece.



**NO. 64 TIERED FISH**  
Cast Stone, 22" h  
Base 13" l X 9" w



**NO. 316 FISH ON SNAIL SHELL**  
Cast Stone  
15 1/2" h X 11" l



**NO. 2456 FISH FOUNTAIN**  
Lead  
14" h, 4" w X 7" l base  
Available in Bronze.



**NO. 4509 FISH**  
Lead, 16 1/4" h  
Piped.  
Available in Bronze.



**NO. 2790 FISH SPOUT**  
Lead  
Available in two sizes:  
3 1/4" l or 4" l  
Available in Bronze.



**NO. 441 FISH WATERJET**  
Lead  
7" w X 14" l  
Available in Bronze.



**NO. 438 FISH**  
Cast Stone, 10 1/4" h  
Available in Lead or Bronze.



**NO. 652 FISH ON SHELL**  
Lead, 15" h X 14" w  
Can be piped.



# FISH



**NO. 2032B FISH**  
 Cast Stone  
 10"l X 10"w  
 Base is 8 1/2"l X 3 1/2"w  
 Available in Lead and Bronze.



**NO. 2032 FISH**  
 Cast Stone  
 12"h X 13"l, Base is 10" X 10 1/2"  
 Lead size: 11"h X 14"l  
 Base is 10" X 10"  
 Available in Bronze.



**NO. 2470 DOUBLE FISH FOUNTAIN**  
 Lead, 28"h X 18"w  
 All Bronze or Lead fish with Cast Stone  
 base by special order.  
 Available in Bronze.



**NO. 2471 FISH WALL  
 PLAQUE**  
 Lead, 10"w X 18"h  
 Design by G. Lewis. Piped.  
 Available in Bronze.



**NO. 986 SEAHORSE PLAQUE**  
 Cast Stone, 21"l



**NO. 28 SEAHORSES**  
 Cast Stone, 24"h  
 Can be piped.



**NO. 2122 SEAHORSE**  
 Lead, 16"h  
 Can be piped. Finely  
 sculptured model by  
 Joseph Kuthmayer.  
 Available in Bronze.



**NO. 4969 CRAB POOL FILLER**  
 Cast Stone, 12"h X 16"w X 23"l  
 It will take a large pipe. The detail is  
 exceptionally good and very carefully modeled.



**NO. 2715 VERTICAL FISH SCULPTURE**

Cast Stone

Available in four sizes:

34"h - body 12" X 19"

42"h - body 14" X 14"

50"h - body 20" X 18"

68"h - body 32" X 20"

Can support a strong, lively water display.



**NO. 55 FISH FOUNTAIN SPOUT**

Cast Stone

6"projection, backplate 6" X 6"



**NO. 2716 HORIZONTAL FISH SCULPTURE**

Cast Stone, 25"l X 15"h X

14"w

Piped. Available in Bronze.



C



B



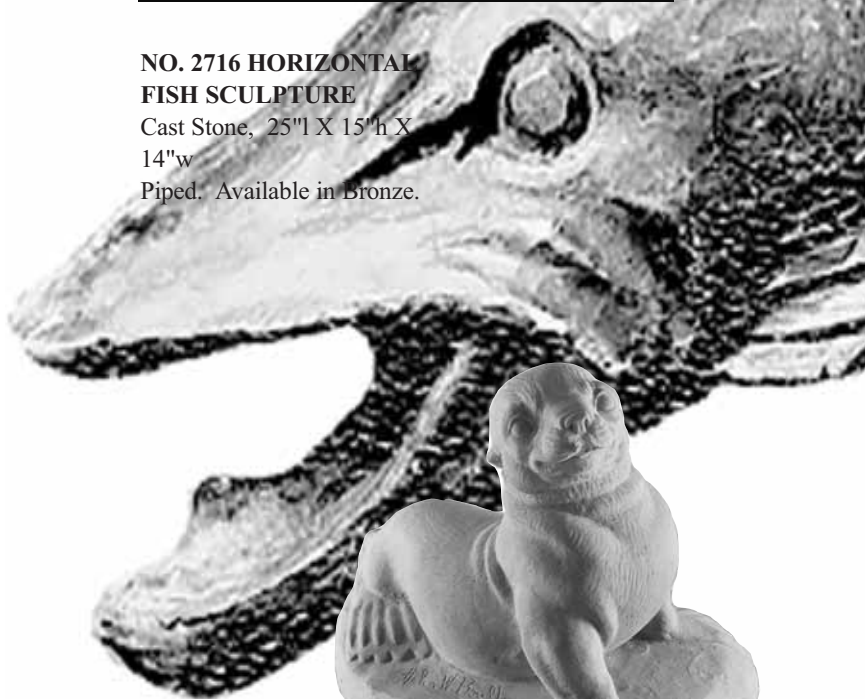
A

**NO. 2742A, B, C FISH**

Lead, 23"l Can spout water

By Geraldine Boulton

Available in Bronze



**NO. 276 BABY SEAL**

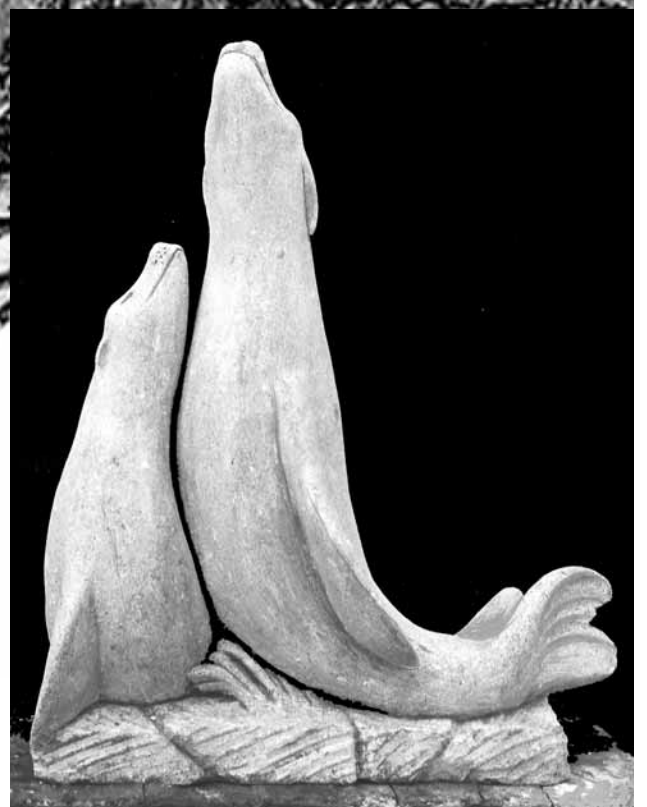
Cast Stone

16"h X 22"l X 14"w

A piece of sculpture by Helen Boulton.

An excellent piece of work.

Available in Lead or Bronze.



**NO. 1029 SEAL FOUNTAIN**

Cast Stone, 33"h

Base 14"w x 21"l. Can be piped.

# DOLPHINS



**NO. 2160 DOLPHIN**  
Lead, 17" h  
Low relief.  
Available in Bronze.



**NO. 2164 DOLPHIN**  
Lead, 17" h  
Design by John Donnelly.  
Available in Bronze.



**NO. 1334 DOLPHIN**  
Lead  
14" h X 7 1/2" w  
Antique reproduction with  
exquisite detail.  
Available in Bronze.



**NO. 887 DOLPHIN  
PEDESTAL**  
Lead, 21" h  
Base 7" X 6" oval  
Furnished as a pedestal or  
for fountain jets.



**NO. 2163 DOLPHIN**  
Lead  
8" h X 4 1/2" w  
By Olympio Brindisi.  
Available in Bronze.



**NO. 4989 DOLPHIN**  
Lead  
8" l X 5 3/4" w X 2 1/4" relief  
The original was from a  
beautiful diminutive fountain  
in a lady's garden in France.  
Available in Bronze.



**NO. 2099 DOLPHIN**  
Lead  
15" h X 9" w X 4" projection.  
Nicely executed dolphin for  
wall mounting. Can be piped.  
Available in Bronze.



**NO. 2062 WALL DOLPHINS  
W/TWISTED TAILS**  
Lead, 18 1/2" h X 17" w  
Available in Bronze.



**NO. 1611 DOLPHIN**  
Lead  
15 3/4" h X 11 1/4" w  
Available in Bronze or Cast Stone.



**NO. 2159 DOLPHIN**

Lead, 10"h  
English model.  
Can be piped.  
Available in Bronze.



**NO. 2025 DOLPHIN**

Lead, 15"h  
English model.  
Available in Bronze.



**NO. 2100 DOLPHIN**

Lead, 21 1/2"h  
Available in Bronze.

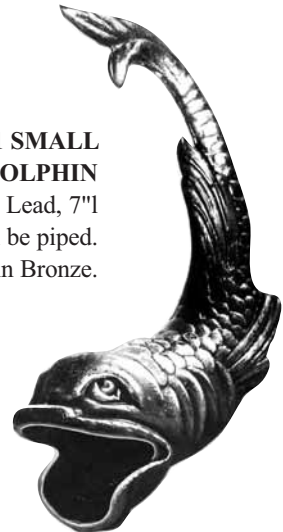


**NO. 2845 DOLPHIN**

Lead  
27"l X 18"h at tail  
Can take very large pipe.  
Available in Bronze.

**NO. 2161 SMALL WALL DOLPHIN**

Lead, 7"l  
Can be piped.  
Available in Bronze.



**NO. 2847 DOLPHIN**

Lead, 27"l  
Design by Joseph Boulton.  
Can be piped as large as 2" diameter. A strong, lively, beautiful piece of sculpture by a great master. No photograph could do it justice.  
Available in Cast Stone or Bronze.



# DOLPHINS



**NO. 3 DOLPHIN FIGURE**  
Cast Stone, 21 1/2"h,  
Base 12" X 10 1/2"  
Illustrated on  
No. 12 pumpcase pedestal.



**NO. 1005 DOLPHINS**  
Cast Stone  
29"h X 29"w  
Can be piped through mouth.



**NO. 2191 GROTESQUE DOLPHIN HEAD**  
Cast Stone, 13"w  
Will take large pipe for water.  
Available with back plate; 16"w X 12"h X 3"d.  
Total projection is 8".  
Available in Lead or Bronze.

**NO. 4944 DOLPHIN**  
Cast Stone  
21"h on a base 10" X 16"  
Piped for water.  
In unusually fine detail. This dolphin  
is furnished on a 2" thick stone base.



**NO. 2158 DOLPHIN MASK**  
Cast Stone (with back plate)  
8 1/2"h X 14 1/4"w X 6 1/2"projection.  
Available in Lead or Bronze  
with size of; 7"h X 9"w X 3"projection.



**NO. 4943 DOLPHIN**  
Cast Stone, 24"h  
Head 10" diameter  
Available in full body or flat back.



**NO. 1755 DOLPHIN WITH BACK PLATE**  
Cast Stone  
14 1/2"h X 6 1/2"w  
This dolphin sits vertically and has an inverted "T"  
back which can be set into or on a wall.



**NO. 2162 DOLPHIN**  
Lead, 7"w X 5 1/2"h  
Available in Bronze.



**NO. 2483 SNAIL SHELL**

Cast Stone  
5 1/4" h X 4" X 3"  
Available in Lead or Bronze.



**NO. 2128 SNAIL**

Lead  
3 1/2" h X 7" l  
Available in Bronze.

**NO. 2129 SNAIL**

Lead  
6 1/2" h X 7" l  
Available in Bronze.

**NO. 2130 SNAIL**

Lead  
7" h X 11" l  
Available in Bronze.



**NO. 180 SNAIL**

Cast Stone with Lead horns  
12" h X 18" l X 7" w  
Available in Bronze.



**NO. 2131 SNAIL**

Lead  
9 1/2" h X 21" l  
Available in Bronze.

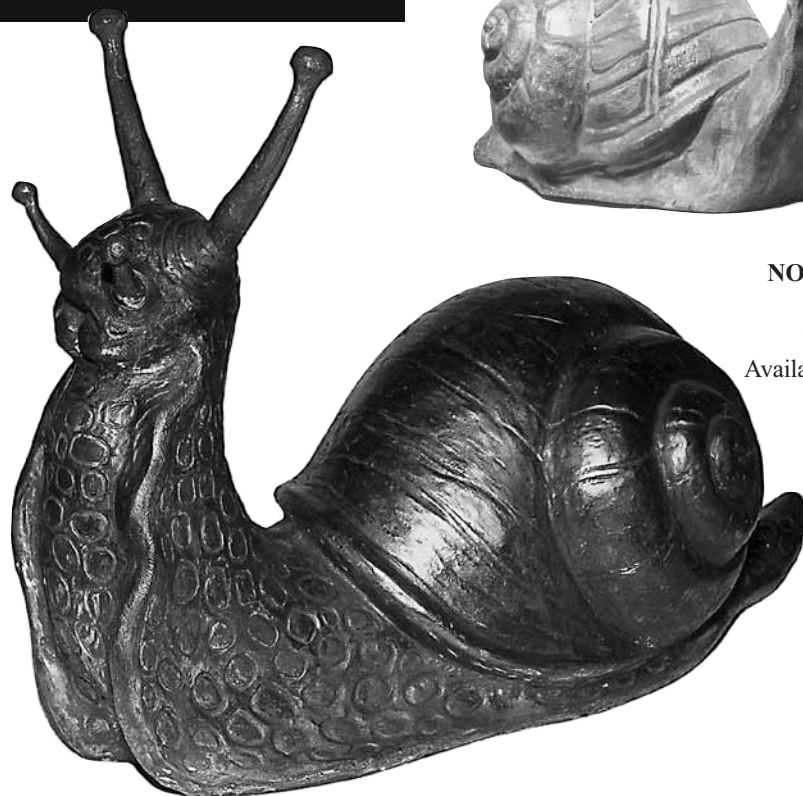


**NO. 2741 STARFISH**

Lead  
12" l X 8" h  
Can be made in any  
shape.  
Available in Bronze.

**NO. 4611 SNAIL  
WITH LEAD HORNS**

Cast Stone  
20" h X 30" l  
Available in Lead or Bronze.





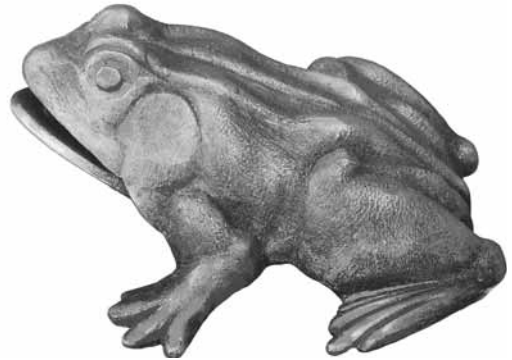
# FROGS



**NO. 2250 KING FROG ON BALL**  
Lead, 7 1/2" h  
For wall mounting water jets.  
Available in Bronze.



**NO. 2030 FROG**  
Lead  
4 1/2" h X 6 1/2" X 7 1/2"  
Available in Bronze.



**NO. 2165 FROG**  
Lead, 7" l x 6" w  
Available in Bronze.



**NO 2166 FROG**  
Lead, 5" h  
Legs and fingers are delicately free.  
A very fine piece of work. Can be piped.  
Available in Bronze.

**NO. 2031 FROG**  
Lead  
7 1/2" h X 11" X 11"  
Available in Bronze.



**NO. 2176 FROG ON LILY PAD**  
Lead  
5 1/2" h, 5 1/2" diameter leaf.  
Design by Joseph Kuthmayer.  
Available in Bronze.



**NO. 2579 FROG ON LILYPAD**  
Lead, 6 1/4" l x 2" w  
May be piped for water.  
Available in Bronze.



**NO. 2178 GIANT FROG**

Cast Stone, 15" h

Base 14 3/4" diameter

Modeled by Joseph Kuthmayer. Will take up to a 3/4" pipe. Available in Lead or Bronze.

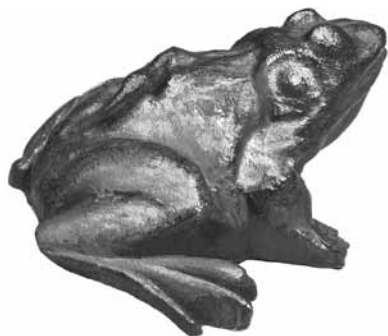


**NO. 2824 LEAP FROG**

Cast Stone, 16 3/4" diameter

Can be cast to first disk for dimensions of 15" h X 14 3/4" diameter base.

A staggered line of these makes a wonderful play arrangement. Available in Lead or Bronze.



**NO. 2179 ITALIAN FROG**

Lead

3" l X 3 3/4" w X 1 3/4" h

Available in Bronze.



**NO. 2173 FROG**

Lead

7" l

Available in Bronze.



**NO. 386 MOTHER FROG WITH BABY**

Cast Stone

Three sizes available: 6" h, 9" h & 18" h

# FROGS



**NO. 13 FROG**  
Cast Stone, 8"h  
Base 10" X 9"



**NO. 987 FROG**  
Cast Stone, 9"h  
Base 8" diameter  
Joseph Boulton sculptor.



**NO. 14 FROG**  
Cast Stone, 9" h  
Base 8" X 7"



**NO. 164 FROG**  
Cast Stone  
15"l X 8"h, Base 8" X 9"



**NO. 66 KING FROG**  
Cast Stone  
7"h X 6 3/4" diameter  
No. 66A Queen Frog, is the mate to the King Frog, but is cast with no crown.  
Available in Lead or Bronze.



**NO. 66A QUEEN FROG**  
Cast Stone  
7" X 6 3/4" diameter  
Available in Lead or Bronze.



**NO. 2279 LAMB RECLINING ON BASE**

Cast Stone  
13 1/2"h, 18" X 13" base  
Available w/o base.  
Size w/o base: 9 1/2"h X 19"l X 6"w  
Available in Lead or Bronze w/o base.

**NO. 2279 LEAD**



**NO. 2280 LAMB  
STANDING**

Lead  
18"h X 19"l X 6"w  
Available in Bronze.



**NO. 742 SUNG GOAT**

Cast Stone  
15 1/2"h X 16"l X 8"w



**NO. 2311 BULL**

Lead  
20"l X 10"h  
Available in Bronze or Cast Stone.

**NO. 756 SUNG GOAT**

Cast Stone  
16"h X 14"l



# GARGOYLES



**NO. 3965 WINGED  
GARGOYLE WITH BASE**  
Cast Stone, 31" h  
Base 8" X 8" X 9 1/2" l



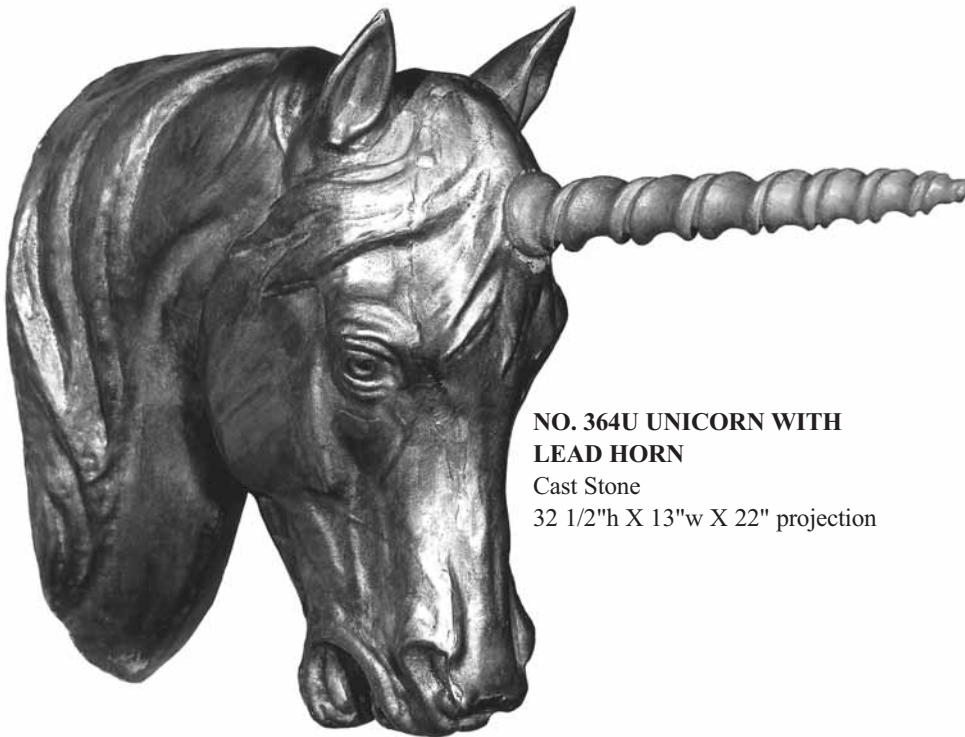
**NO. 778 GARGOYLE**  
Cast Stone  
19 1/2" Projection X 11" w X 16" h



**NO. 3966 GARGOYLE**  
Cast Stone  
31 1/2" h X 15" l  
This is meant to be incorporated into a  
wall or corner.

**NO. 3964 CROCODILE**  
Cast Stone  
53" l X 14 1/2" w  
Can be piped.





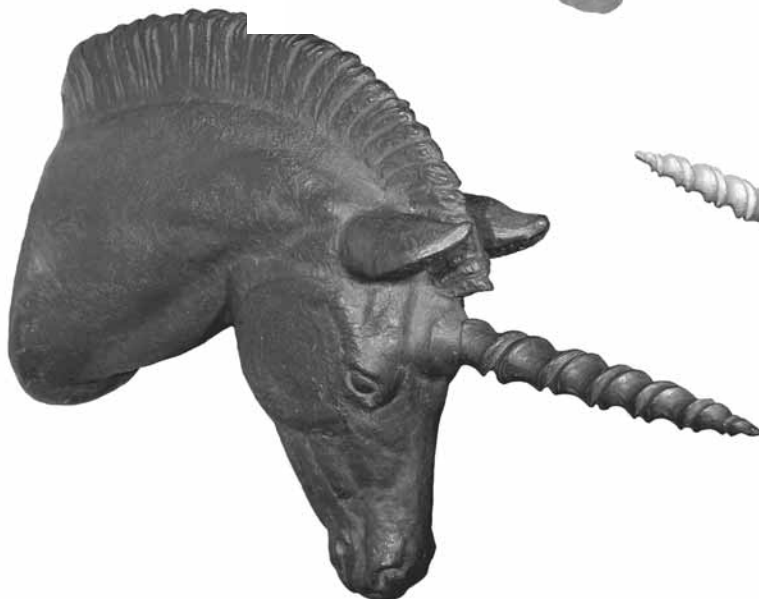
**NO. 364U UNICORN WITH  
LEAD HORN**  
Cast Stone  
32 1/2"h X 13"w X 22" projection



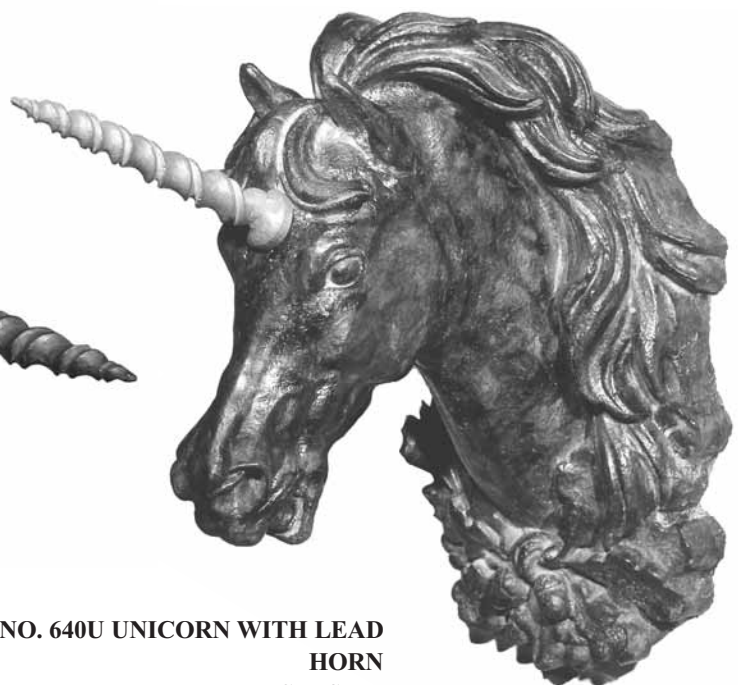
**NO. 1632U UNICORN  
COLT**  
Lead  
30"l X 22 1/2"h  
Available in Bronze.



**NO. 1016U UNICORN HEAD WITH  
LEAD HORN**  
Cast Stone, 16 1/2"h  
Horn available in Bronze.

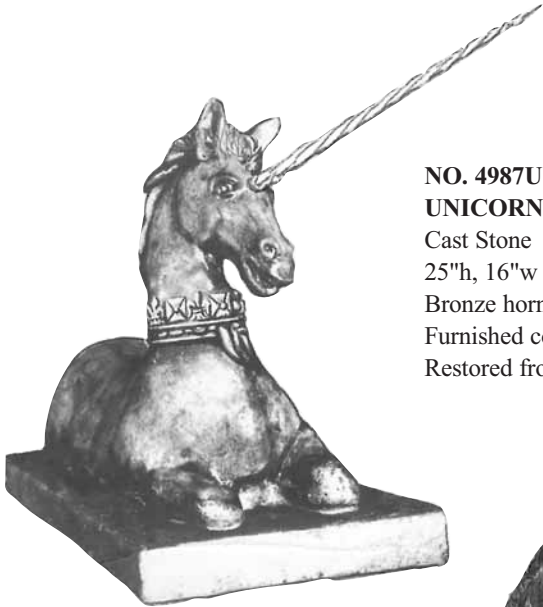


**NO. 1632HU UNICORN HEAD**  
Lead  
18" projection  
Available in Bronze.



**NO. 640U UNICORN WITH LEAD  
HORN**  
Cast Stone  
32 1/2"h X 13"w X 22" projection

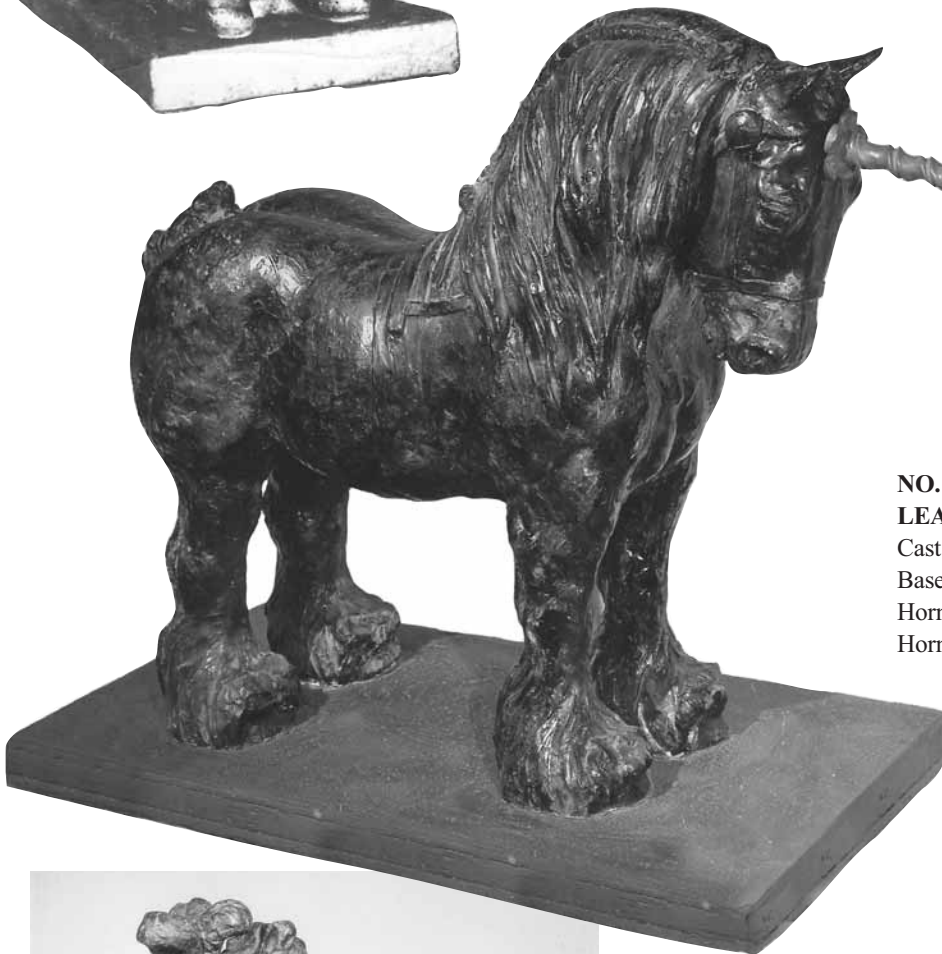
# UNICORNS



**NO. 4987U FRENCH CAROUSEL UNICORN**  
 Cast Stone  
 25"h, 16"w X 37"l base  
 Bronze horn.  
 Furnished complete with anchors.  
 Restored from an antique.



**NO. 4526U RESTING UNICORN**  
 Lead  
 11"l X 7 1/2"h  
 Antique reproduction.  
 Available in Bronze.



**NO. 1000U UNICORN WITH LEAD HORN & EARS**  
 Cast Stone, 40"h X 54"l  
 Base 23"w X 46"l  
 Horn can be made to be removable.  
 Horn and ears available in Bronze.



**NO. 2942U UNICORN**  
 Lead  
 26"l X 17"h. Can be piped for water.  
 Also available in Bronze.



**NO. 2738U UNICORN**  
 Lead  
 25"l X 19 1/2"h  
 Also available in Bronze.



**NO. 1000 CLYDESDALE HORSE**

Cast Stone, 40" h  
Base 23" w X 46" l

The Clydesdale is one of the truly greatest pieces of horse sculpture available. Everyone loves these great gentle beasts and any place would be proud to have a pair of these at the entryway. Note the treatment of the mane and tail. Certainly this is one of the best loved pieces Kenneth Lynch & Sons has ever produced. It weighs approximately 600lbs. and is reinforced.



**NO. 1632 COLT**

Lead, 37 3/4" h  
Set on a cast stone base.  
Available in Bronze.



**NO. 1633 PEGASUS**

Lead, 37 3/4" h  
Base 20" w X 42" l  
Available in Bronze.



# HORSES



NO. 4987 (LEFT)

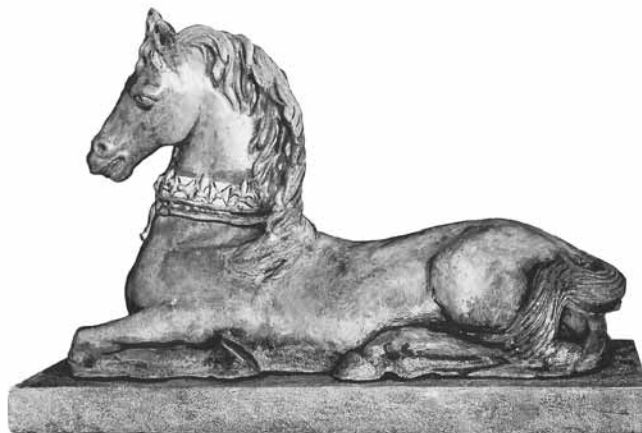
## NO. 4987 FRENCH CAROUSEL HORSE

Cast Stone

25"h, 16"w X 37"l base

Pair of French Carousel type Horses probably 17th century. This one is a mare and is wearing a decorative collar with Fleur-de-Lis and Maltese Crosses alternating. The small strap which hangs pendant-wise from the decorative collar possibly could have held a bauble of some kind. These are unquestionably designed to grace the entrance of an estate. Furnished complete with anchors.

Available in left or right versions.



NO. 4987 (RIGHT)



## NO. 495 PERCHERON HORSE

Cast Stone

13"h X 13"l



## NO. 2738 HORSE

Lead

25"l X 19 1/2"h

Available in Bronze.



## NO. 3411 HORSE HEAD

HITCHING POST

Aluminum, 14"h

This can be mounted on a post or pedestal.



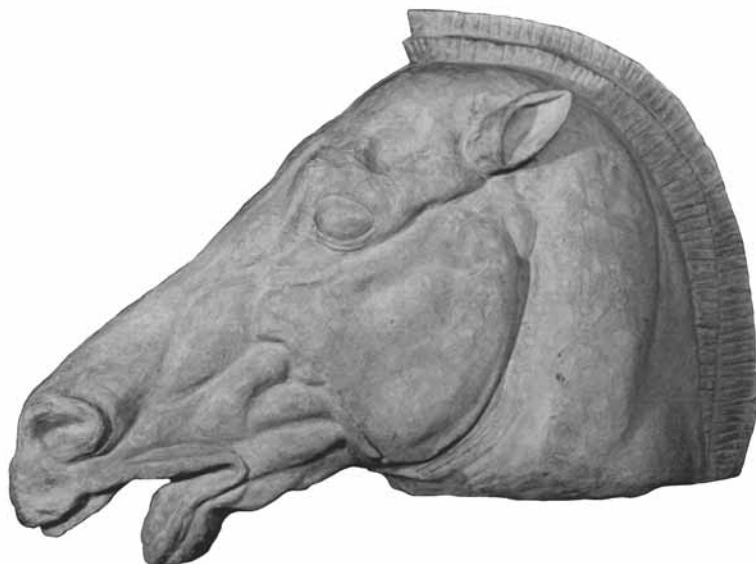
## NO. 746 TANG HORSE PLAQUE

Cast Stone

38"h X 45"w X 3 1/2"w



**NO. 364 HORSEHEAD**  
Cast Stone  
12 1/2"h X 12 1/2"projection



**NO. 1331 HORSE HEAD**  
Cast Stone, 27"h X 32"w  
Base 16" X 9"  
From the east pediment of the Parthenon comes this sculpture of a horse's head. Panting and exhausted after a night of drawing the moon goddess, Selene, across the skies in her celestial chariot. It is one of the masterpieces of realistic Greek sculpture from approximately 438 to 431 BC. Although the Parthenon sculptures were executed by many artists, the design of this classical masterpiece was most probably conceived by Phidias. The original is of marble and is in the Elgin room of the British Museum in London. Reproduced with permission of the trustees. A heroic, magnificent, breathtaking piece of sculpture. May be piped for water. Available in Lead or Bronze.



**NO. 1016 HORSEHEAD**  
Cast Stone  
14"h X 16"l



**NO. 640 HORSEHEAD**  
Cast Stone  
32 1/4"h X 13" w  
with a 15" projection



**NO. 740 PERSIAN HORSEHEAD**  
Cast Stone  
27"h X 27"w X 11"d

# MONKEYS



**NO. 2152 HANGING MONKEY**  
Lead, 23 1/2"l  
Design by J. Johnstone  
Available in Bronze.



**NO. 60 MONKEY**  
Cast Stone, 23"h



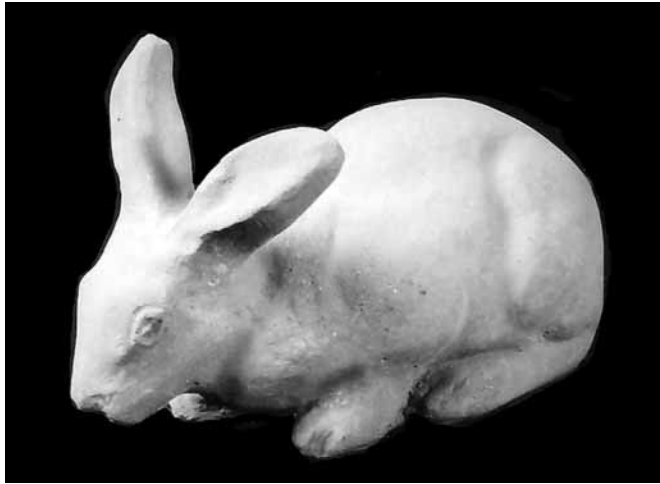
**NO. 61 MONKEY**  
Cast Stone, 22"h



**NO. 428 MONKEY**  
Cast Stone  
17"h X 14"w  
Can be piped.



**NO. 429 THREE MONKEYS**  
Cast Stone  
16"h X 20"w  
Can be piped.



**NO. 121 RABBIT**  
Cast Stone, 11" long



**NO. 122 RABBIT**  
Cast Stone, 8" long



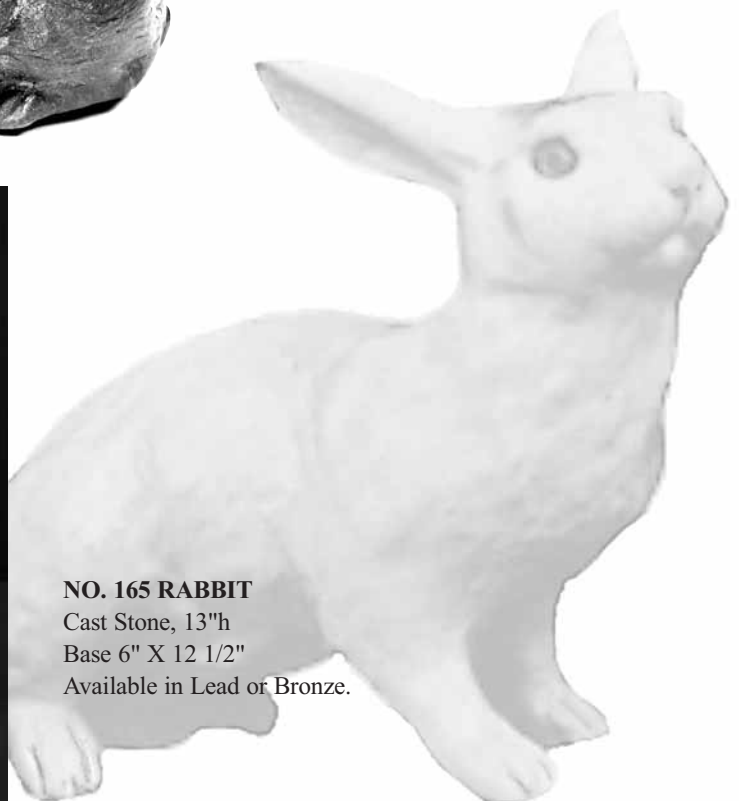
**NO. 123 RABBIT**  
Cast Stone, 6" long  
Available in Lead or Bronze.



**NO. 123 RABBIT**  
Lead, 6" long  
Available in Cast Stone or Bronze.



**NO. 165 RABBIT**  
Cast Stone, 13"h  
Base 6" X 12 1/2"  
Available in Lead or Bronze.



# RABBITS



**NO. 166 RABBIT**  
 Cast Stone, 8 1/4"h  
 Base 7 3/4"l X 5 3/4"w  
 Available in Lead and Bronze.



**NO. 2298 RABBIT**  
 Lead  
 10"h X 12"l  
 Design by Gustave Lindstrom.  
 Available in Bronze.



**NO. 273 "LUCIFER" RABBIT**  
 Cast Stone, 27"h  
 Base 12"  
 Modeled from a pet of that name by the  
 eminent sculptor Joseph Bolton.



**NO. 2498 RABBIT**  
 Cast Stone  
 7"h X 10 1/4"l  
 Design by Olympio Brindisi.  
 Available in Lead or Bronze.



**NO. 2481 RABBIT**  
 Cast Stone  
 4 1/4"l X 3"h  
 Most beautiful of models.  
 Available in Lead or Bronze.



**NO. 2380 SQUIRREL**  
Cast Stone  
11"h  
Available in Lead or Bronze.



**NO. 2275 SQUIRREL**  
Cast Stone  
17"h



**NO. 1108 SQUIRREL**  
Cast Stone  
18"h  
Facing left or right



**NO. 2140 SQUIRREL**  
Lead, 16 1/2"h  
Available in Bronze.



**NO. 2149 SQUIRREL**  
Lead, 6"h  
Design by Joseph Kuthmayer.  
Available in Bronze.



**NO. 2529 SQUIRREL**  
Lead  
9"w X 8 1/2"h, 5" diameter base  
This signed piece by Joseph Boulton looks great on the top of a gatepost and it is particularly desirable any place where you can get close enough to view it. This is a most elegant piece of work. Mr. Boulton says this is just the way squirrels get when it is raining. Available in Bronze.

# TURTLES



**NO. 2233 SMALL TURTLE**  
Lead, 4"l  
Piped with upper shell fastened securely to body, or, upper shell removable to use as ash tray, stamp case, etc.  
Available in Bronze.



**NO. 335 TURTLE**  
Cast Stone  
Available in two sizes:  
7 1/2"l X 5"w  
and 13"l X 8"w  
Can be piped.



**NO. 2809 TURTLE**  
Cast Stone  
24"l  
Will take large pipe.



**NO. 319 TURTLE**  
Cast Stone  
23"l X 15"w X 10"h  
Can be piped.  
Has beautiful detail.



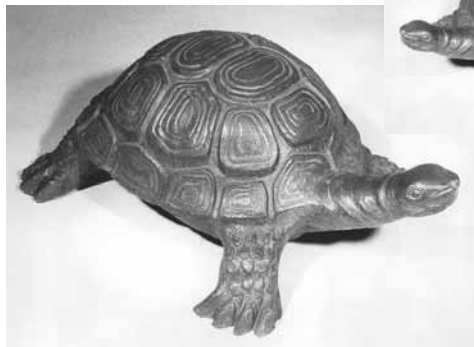
**NO. 2810 TURTLE**  
Caste Stone  
57 1/2"l  
Will take large pipe up to 3/4".

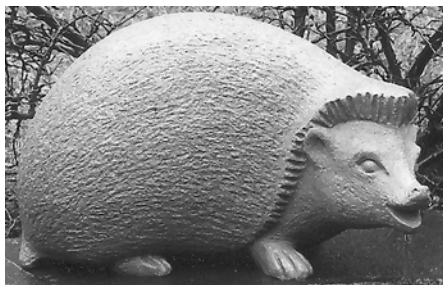


**NO. 2143 TURTLE**  
Lead, 9"l  
Piped.  
Available in Bronze.

**NO. 2459 INVESTIGATING TURTLE (RIGHT)**

**NO. 2458 INVESTIGATING TURTLE (LEFT)**  
Lead  
Available in two lengths: 13"l or 7"l  
This turtle can be furnished with head closer to shell.  
Available in Bronze.





**NO. 374 HEDGEHOG**

Cast Stone  
Two sizes available:  
3 1/2" X 7"  
8" X 12"



**NO. 1168 KANGAROO**

Cast Stone  
21 1/2"h X 32 1/2"l



**NO. 2194 FOX**

Lead  
15"h X 30"l  
This is one of our best models.  
Available in Bronze.



**NO. 1180 SKUNK**

Cast Stone  
Available in two sizes:  
9 1/2"h X 10"l  
& 15"h X 14"l  
Available in Lead or Bronze.

**NO. 5569 STANDING OTTER**

Cast Stone  
24"h, 9" X 10" base  
Design by Geraldine Lewis Amendola. Very personable.  
(See also Otter No. 971 different attitude).  
Available in Lead or Bronze.



**NO. 971 OTTER**

Cast Stone, 24 3/4"h  
Base 11" diameter  
Available in Lead or Bronze.  
Beautifully modeled by Claire Low. Works well where water can splash on it.







# Animal Statuary

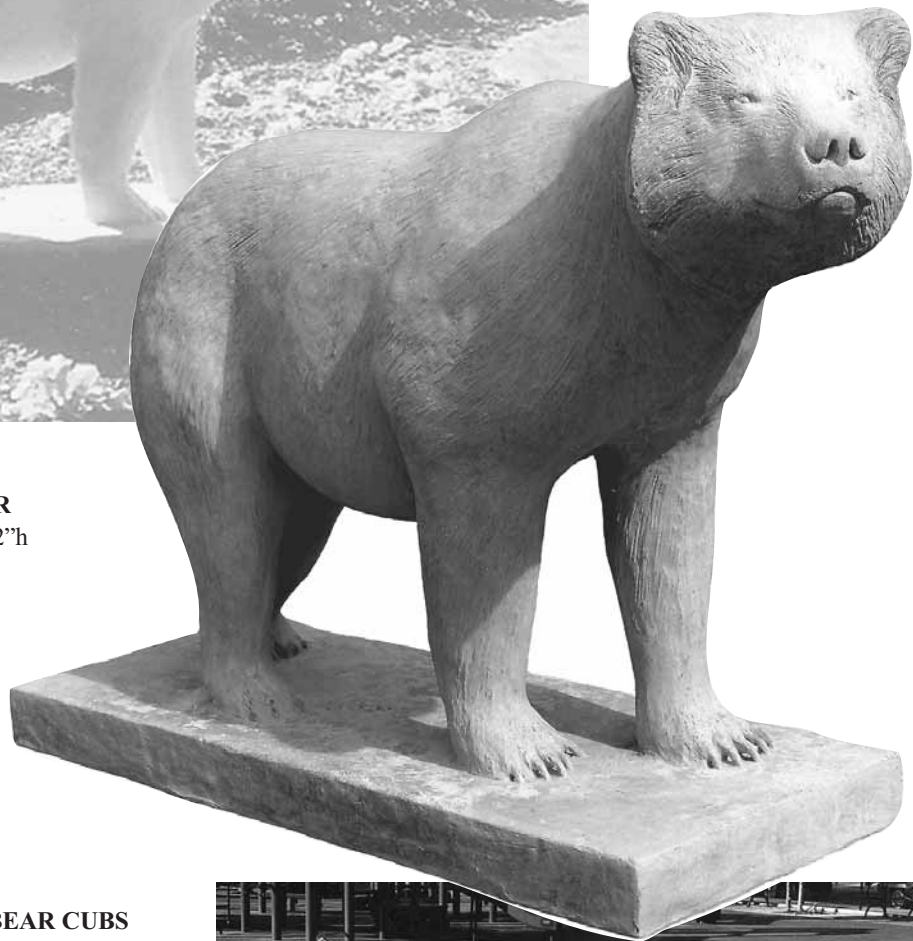
# BEARS



**NO. 1764 BEAR**  
 Cast Stone  
 56" h X 96" l from back of base to tip of nose.  
 72" X 28" base. 78" nose to tail.  
 Roughly life size in Cast Stone only. The base and legs have a massive reinforcement package. The weight is approximately 3 tons. The base can be sunk into the ground so the feet are at grade.



**NO. 30 BEAR**  
 Cast Stone, 22" h



**NO. 966 BEAR CUBS**  
 Cast Stone, 14" h  
 Base is 12 1/2" X 9 1/2" w



**NO. 1728 & 1729 DANCING BEARS - (LEFT AND RIGHT)**

Cast Stone  
 No. 1728 is 36" h X 42" w  
 No. 1729 is 36" h X 41" w.  
 Originally made for the New York City Department of Parks, these pieces evoke a happiness found in children. Made with a massive reinforcing structure which goes to a depth of 24" minimum into other concrete cast on the site. Can be piped for water.



**No. 1728**  
 (FACING LEFT)



**No. 1729**  
 (FACING RIGHT)



**NO. 2244 EAGLE**

Lead  
30" w X 14" h  
Full bodied eagle. Available in Bronze.



**NO. 2245 EAGLE**

Lead  
16 1/2" w X 12" h  
Available in Bronze.



**NO. 2170 EAGLE**

Lead  
10" w X 4 3/4" h X 4 1/2" projection.  
Full-bodied eagle.  
Available in Bronze.



**NO. 2153 EAGLE**

Lead  
7" w X 7 3/4" h X 5" projection.  
Full-bodied eagle.  
Available in Bronze.



**NO. 1766 EAGLE ON BALL**

Cast Stone  
42" h, 25" wing spread  
Base 15" diameter  
Originally a stamped sheet metal product from the  
Miller and Doing Collection.



**NO. 2415 EAGLE**

Lead, 19" h X 17 1/2" w  
Available in right and left models.  
This is one of the best pieces of work available.  
Design by the late Raphiel Menconi for James C.  
MacKenzie, A.I.A.  
Available in Bronze.

# EAGLES



**NO. 107 EAGLE  
(LEFT)**  
Cast Stone, 24" h X 16 1/2" w

**NO. 106 EAGLE  
(RIGHT)**  
Cast Stone, 24" h X 16 1/2" w



**NO. 2196 FULL BODIED EAGLE**  
Lead  
45" w X 19" h  
This is a majestic piece of work,  
beautifully executed from the  
original English antique.  
Available in Bronze.



**NO. 2839 EAGLE**  
Lead  
14" h X 27" w  
Available in Bronze.



**NO. 282 EAGLE**  
Cast Stone, 28" h X 27" w  
Base 14 1/2" diameter  
Available facing left or right.



**NO. 2613 L**



**NO. 2613 R**

**NO. 2613 EAGLE**  
Lead, 6" h X 9" w  
Left and right.  
French reproductions. Available in Bronze.



**NO. 2886 STREAMER EAGLE**

Lead, 44"l

Can be furnished regular Lead finish or Gold Leafed.

Available in Bronze.



**NO. 82 EAGLE**

**PLAQUE**

Cast Stone, 40"w



**NO. 2266 EAGLE**

Lead

Available in two sizes:

11h X 11 1/2"w or 6"w X 5 1/2"h

Very sharp detail.

Available in Bronze.

**NO. 2181 EAGLE**  
Lead, 24"w X 5"h  
This antique reproduction is a rather low relief but exquisitely executed. It also has a flat back. Available in Bronze.



**NO. 6002 EAGLE**

Lead, 40"w X 10 1/2"h

Available in Bronze.



**NO. 2621 EAGLE**

Lead, 4 1/2" X 5"

Low relief with a flat back.

Available in Bronze.



**NO. 2580 EAGLE ON BASE**

Cast Stone

13 1/2"h X 13"w

Base 8 1/2" X 7 1/2"



**NO. 2582 EAGLE**

Lead

13"w X 11 1/2"h

Antique reproduction.

Available in Bronze.

**NO. 2580 EAGLE ON BASE**

Cast Stone

13 1/2"h X 13"w

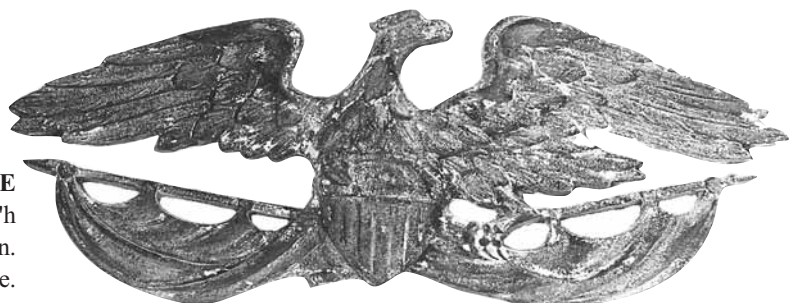
Base 8 1/2" X 7 1/2"

**NO. 2616 EAGLE**

Lead, 22"w X 8"h

Antique reproduction.

Available in Bronze.



# BIRDS



**NO. 2404 BIRD**  
Lead, 4 1/2"l  
English model.



**NO. 2737 BIRD**  
Lead, 3 1/2"l  
Available in Bronze.



**NO. 2583 BIRD**  
Lead, 6"l  
Deep detail. Available in Bronze.



**NO. 2733 BIRD**  
Lead  
4"h X 8 3/4"l  
Available in Bronze.



**NO. 2059 BIRD**  
Lead, 6"l  
Very primitive model of cat bird.  
Available in Bronze.



**NO 2138 BIRD**  
Lead, 5 1/2" h  
Will perch on edge of any flat  
surface, tank, bird feeder, etc.  
Available in Bronze.



**NO. 2732 PIGEON**  
Lead, 21"l  
Very decorative. By Jo Ray, L.A.  
Available in Bronze.



**NO. 2124 BIRD**  
Lead, 3"l  
Available in Bronze.



**NO. 2125 BIRD**  
Lead, 3"l  
Available in Bronze.



**NO. 2126 BIRD**  
Lead, 3"l  
Available in Bronze.



**NO. 2262 BIRD**  
Lead, 4 3/4"h  
Design by Joseph Boulton.  
Available in Bronze.



**NO. 2255 BIRD**  
Lead, 5 1/2"l  
Available in Bronze.



**NO. 2258 BIRD**  
Lead, 6"l X 5"w  
Available in Bronze.



**NO. 2270 BIRD**  
Lead, 5"h  
Design by Joseph Boulton.  
Available in Bronze.



# BIRDS



**NO. 2735 BIRD NESTING**

Lead, 3"l  
Available in Bronze.

**NO. 2734 BIRD**

Lead, 3"l  
Available in Bronze.



**NO. 4618 TWO BIRDS MOUNTED ON PLATE**

Lead, 8"l X 3"w - size of plate  
Available in Bronze.

**NO. 2960 BIRDS ON PLATE**

Lead, 8"l X 3"w, birds are 2 1/2"h  
Can be bent over edge of bird bath.  
Available in Bronze.



**NO. 4619 THREE BIRDS MOUNTED ON PLATE**

Lead, 8"l X 3"w - size of plate  
Available in Bronze.



**NO. 4614 BIRD**

Lead, 4" X 3"  
Available in Bronze.



**NO. 4615 BIRD**

Lead, 4" X 2 1/2"  
Available in Bronze.



**NO. 4616 BIRD**

Lead, 3 3/4" X 2 1/2"  
Available in Bronze.



**NO. 4617 THREE BIRDS MOUNTED ON PLATE**

Lead, 8"l X 3"w - size of plate  
Available in Bronze.



**NO. 155 PAIR OF BIRDS**  
Cast Stone, 5"h



**NO. 184 TWO BIRDS**  
Cast Stone, 13"h



**NO. 1770 LOVE BIRDS PLAQUE**  
Cast Stone, 9"h X 23"l  
Fitted with means for attachment to a wall.



**NO. 1759 SWAN**  
Cast Stone  
22"h X 14"w X 28", front to back.



**NO. 207 DUCK**  
Cast Stone, 14"h

# DUCKS



**NO. 4832 GOOSE**  
Lead, 18"h  
Available in Bronze.



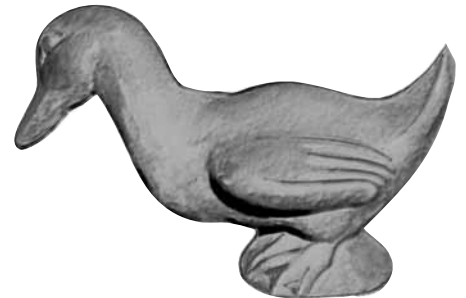
**NO. 2137 DUCK**  
Lead  
5"h X 8"l  
Piped on request.  
Available in Bronze.



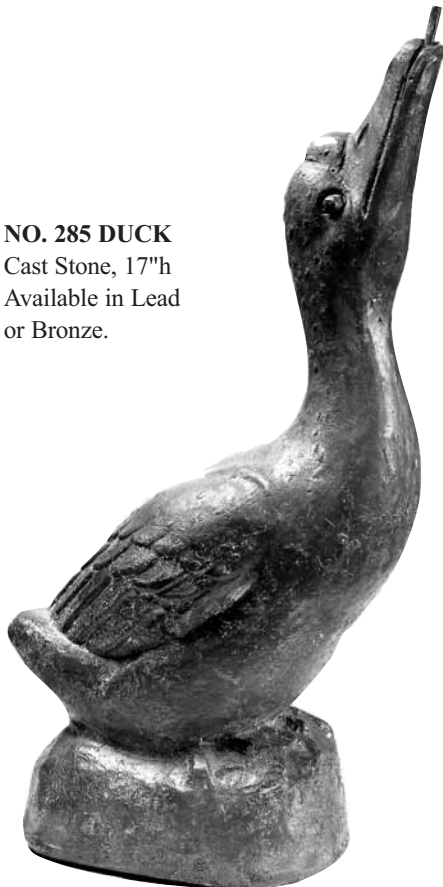
**NO. 2471B DUCK**  
Lead, 15"h  
Available in Bronze.



**NO. 2475 DUCK & DUCKLINGS  
FOUNTAIN WITHOUT POOL**  
Lead, 26"h  
Available in Bronze.



**NO. 2471A DUCK**  
Lead, 5"h X 7"l  
Available in Bronze.



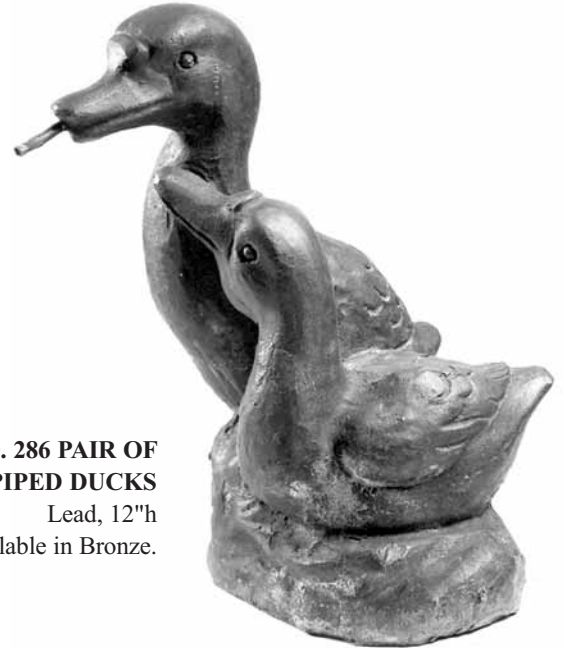
**NO. 285 DUCK**  
Cast Stone, 17"h  
Available in Lead  
or Bronze.



**NO. 2891 DUCK**  
Lead, 7"l X 4 1/4"h  
Carved by John Lacey.  
Available in Bronze.



**NO. 4506 DUCK**  
Lead, 8"h  
Available in Bronze.



**NO. 286 PAIR OF  
PIPED DUCKS**  
Lead, 12"h  
Available in Bronze.



**NO. 685 DUCK**  
Lead  
5 1/2"h X 5 1/4"l  
Available in Bronze.



**NO. 2141 PENGUIN**  
Lead, 14 1/2"h  
By Borcelleni.  
Available in Bronze.

**NO. 2861 PENGUIN**  
Lead, 22"h  
Design by Helen Boulton, wife of  
Joseph Boulton.  
Available in Bronze.



**NO. 686 DUCK**  
Lead  
12 1/2"h X 14"l  
Available in Bronze or Cast Stone.

# CRANES



NO. 2736 A



NO. 2736 B



## NO. 2736 CRANE

Lead

Available in two sizes and four attitudes:

Large Size Attitude A - 26"  
Small Size Attitude A - 11"

Large Size Attitude B - 43"  
Small Size Attitude B - 25"

Large Size Attitude C - 31"  
Small Size Attitude C - 14"

Large Size Attitude D - 36"  
Small Size Attitude D - 14"

Lead body with bronze legs on a  
fixed bronze plate.  
Available in all Bronze.



NO. 2736 C



NO. 2736 D



**NO. 2892 CRANE**

Lead, 59"h

Wingspread 44". Cast Stone base 22"h X 20"diameter.

Reproduction of 19th century American fountain piece. This is a very valuable collector's item.

Can be piped. Available in Bronze.



**NO. 2246 GOOSE**

Lead, 26"w X 30"l X 17"h

Piped. Available in Bronze.



**NO. 2248 GOOSE**

Lead, 22"w X 22"l X 22"h

Piped. Available in Bronze.



**NO. 2247 GOOSE**

Lead, 25"w X 30"l X 17"h

Piped. Available in Bronze.