



# Birdbaths

# BIRD BATHS



**NO. 9 ANTIQUE BIRDBATH**

Cast Stone  
48" h X 23" diameter  
Figure is 14" h.



**NO. 41 BIRDBATH**

Cast Stone  
Top 24" h X 18 3/4" diameter.  
Can be made with or without birds.



**NO. 117 BIRDBATH ON DOLPHIN  
PEDESTAL**

Cast Stone  
22" h X 29" diameter  
Dolphin Pedestal discontinued, bird  
bath bowl still available



**NO. 1342 BIRDBATH**

Cast Stone  
22" ~~18"~~ h X 16" diameter  
Base 12 1/2" X 12 1/2" X 7 1/2" h  
English model.



**NO. 1343 BIRDBATH**

Cast Stone  
25 1/2" h  
Base 16" X 16" square



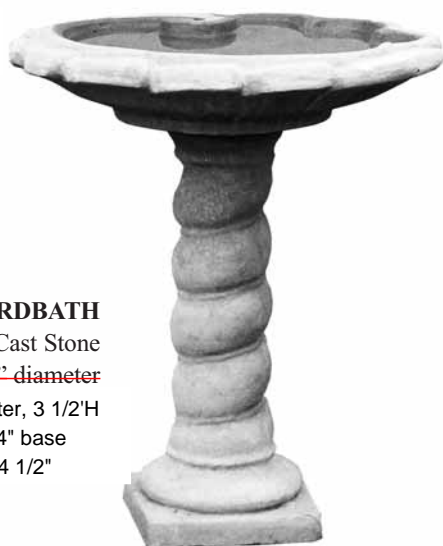
**NO. 1142 BIRDBATH SHELL & PEDESTAL**

Cast Stone  
31" h X 28" w  
Overall 38 1/2" H w/bowl



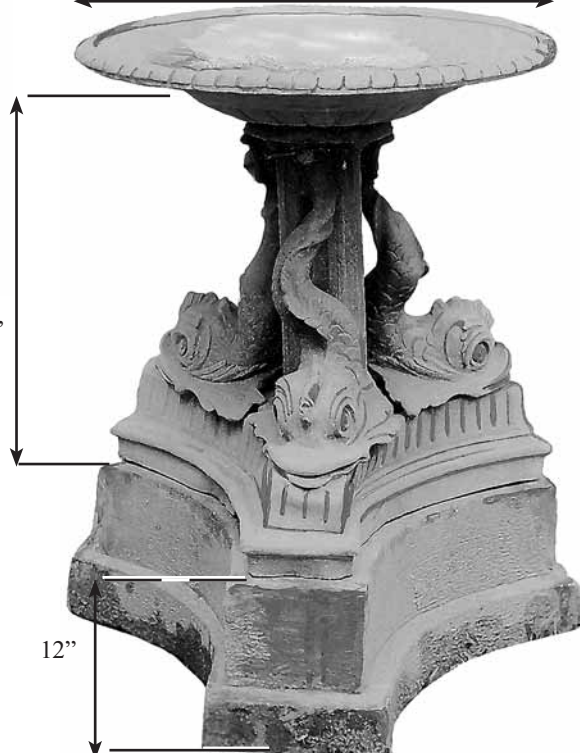
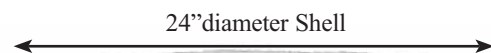
**NO. 528 BIRDBATH**

Cast Stone  
31" h, Bowl is 23" diameter  
Pedestal base can be purchased separately.



**NO. 88 BIRDBATH**

Cast Stone  
28" h, Bowl 24" diameter  
Bowl 22" diameter, 3 1/2" H  
9 1/2" x 9 3/4" base  
Pedestal 24 1/2"



**NO. 2215 DOLPHIN PEDESTAL ON CAST STONE BASE WITH 24" SHELL**

Lead, 24" h  
The dolphin base is set on a 12" h tri-form stone base.  
Available in Bronze.



**NO. 524 BIRDBATH**

Cast Stone, 10" h  
28" diameter  
Can be piped as fountain water source.

# BIRD BATHS



**NO. 576 BIRDBATH**  
Cast Stone  
24"h X 23" diameter



**NO. 574 BIRDBATH FOUNTAIN**  
Cast Stone, 24"h  
Bowl, 15 1/2" diameter  
Pool not available.



**NO. 149 WEIR FARM  
BIRDBATH PEDESTAL**  
Cast Stone, 28 1/2"h  
Base, 9" diameter  
Top, 7" diameter  
Also shown in pedestal section.



**NO. 241 RUSTIC BIRDBATH**  
Cast Stone  
24"h X 21" diameter



**NO. 1065 BIRDBATH**  
Cast Stone  
36"h X 30" diameter  
13 1/2" base.



**NO. 831 BIRDBATH**

Cast Stone

5" h X 20" l X 14" w

A reproduction of an English antique found at Claydon House, England.



**NO. 832 ARCHITECTURAL BIRDBATH**

Cast Stone

6 1/4" h X 31" l X 23 1/2" w

Can be placed on the ground or a pedestal.

Suggest use with pedestal No. 507.



**NO. 179 BIRDBATH SHELL**

Cast Stone

18" X 22" X 4" h



**NO. 527 BIRDBATH**

Cast Stone

12 1/2" h

21" diameter

9 3/4" base



**NO. 974 BIRDBATH**

Cast Stone

22" diameter X 5" h

Modeled by Joseph Boulton. Strong, rugged.

Can sit on its own or on a pedestal.

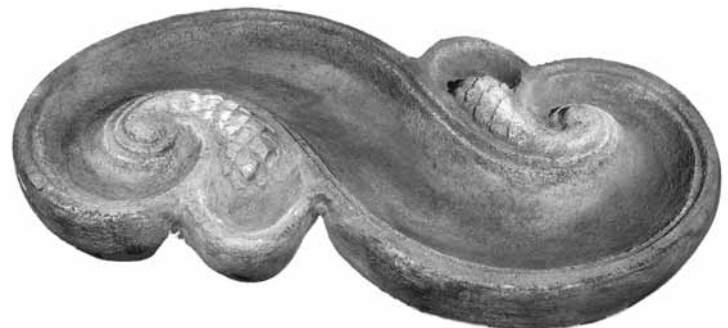


**NO. 202 DEEP BIRDBATH**

Cast Stone, 32" diameter X 7 1/2" h

**NO. 202A SHALLOW BIRD BATH**

32" diameter X 3 1/2" h



**NO. 279 BIRDBATH**

Cast Stone

34" l X 18" w X 7" h

A large luxurious birdbath.

# BIRD BATHS

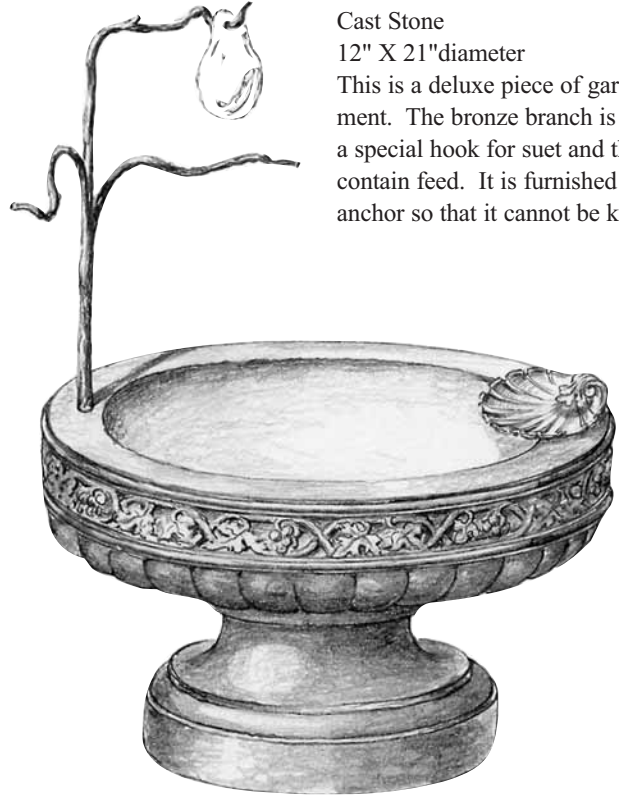


**NO. 1231 BIRD BATH WITH COPPER DRIP**

Cast Stone

23" h X 26" diameter

Note the copper drip tube for replenishment.

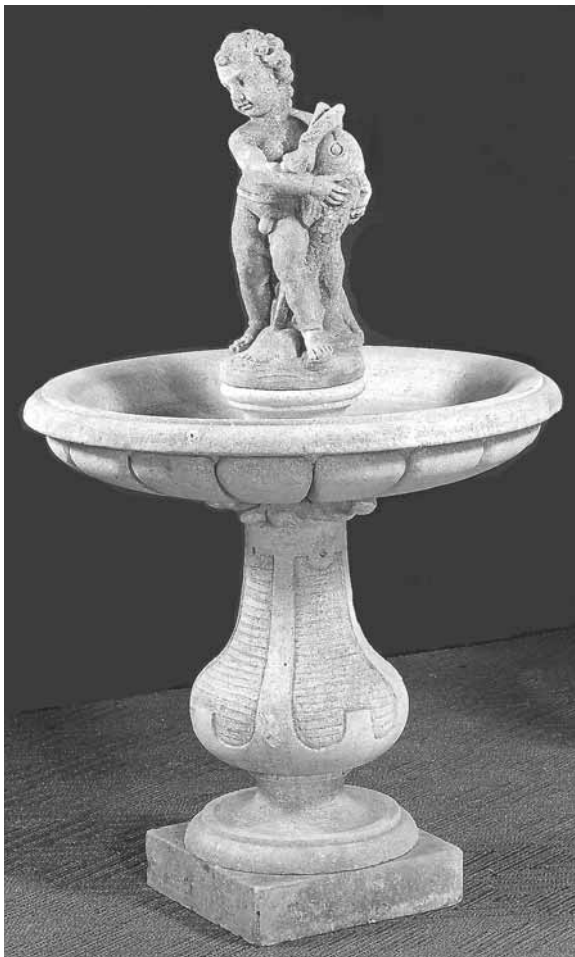


**NO. 4799 BIRD BATH WITH BRONZE BRANCH**

Cast Stone

12" X 21" diameter

This is a deluxe piece of garden equipment. The bronze branch is designed for a special hook for suet and the shell can contain feed. It is furnished with an anchor so that it cannot be knocked over.



**NO. 997 BIRDBATH**

Cast Stone

31 1/2" h X 29" diameter

The figure is 14" h. Other figures may be substituted.

**NO. 284 BIRDBATH, FOUNTAIN OR FEEDER**

Cast Stone

13" h X 16" w



**NO. 830 THREE PIECE BIRDBATH**

Cast Stone

13" h X 19" X 19"

Base 16" X 16" square



NO. 2209  
(BACK VIEW)

NO. 2209  
(FRONT VIEW)

**"ST. FRANCIS"  
SHRINE/BIRD  
FEEDER**

Lead  
16"h X 12"w

There is a small basin on the obverse side which acts as a foot to make it stand and which can be used as a bird feeder or to hold a votive candle. On the reverse side is the complete "Canticle of the Sun." Can be furnished with loop on top for hanging in tree.  
Available in Bronze.  
Piece must be hung to see both sides



**NO. 2413 THREE  
SHELL BIRDBATH**

Lead  
16"w across the top  
Available in Bronze.



**NO. 2221 "ST. FRANCIS" PLAQUE**

Lead  
7 1/2"w X 12"h  
Used with No. 2209 Shrine. The reverse side has beautifully inscribed, "The Canticle of the Sun."  
Available in Bronze.

*"The Canticle of the Sun"*

*Most high omnipotent Lord, Thine are the praises, the glory, the honor,  
and all benediction.  
To Thee alone, Most High, do they belong,  
And no one is able to praise You as You deserve.  
Praised be Thou, my Lord, with all Thy creatures,  
Especially the honored Brother Sun,  
Who makes the day and illumines us through Thee.  
And he is beautiful and radiant with great splendor,  
And bears the signification of Thee, Most High One.  
Praised be Thou, my Lord, for Brother Wind,  
And for the air, cloudy and clear and every weather,  
By which Thou givest sustenance to Thy creatures.  
Praised be Thou, my Lord, for Sister Water,  
Which is very useful and humble and precious and chaste.  
Praised be Thou, my Lord, for Brother Fire,  
By whom Thou lightest the night,  
And he is beautiful and jocund and robust and strong.  
Praised be Thou, my Lord, for our sister Mother Earth,  
Who sustains and governs us,  
And produces various fruits with colored flowers and herbage.  
Praise and bless my Lord and give Him thanks  
And serve Him with great humility.  
Praised be Thou, O'Lord, for those who give pardon for Thy Love  
And endure infirmity and tribulation.  
Blessed be Thou, who endure in peace, who will be,  
Most High, crowned by Thee!  
I pray to Thee in thanksgiving for the tranquility of the garden  
And all the wondrous things of nature.*

# BIRD BATHS



**NO. 2239 DANCING GIRL NO. 2445 ON SHELL**  
Lead, 32" h  
With No. 2102 Shell, 21" diameter  
Available in Bronze.



**NO. 4658 BOWL ON SWAN PEDESTAL**  
Lead, overall approximately 54" h  
Swan pedestal 26" h, 25" diameter  
Bowl may be used alone as a birdbath or any figure may be added.  
Available in Bronze.



**NO. 2409 SHELL BIRDBATH ON LEGS WITH ENGLISH FIGURE**  
Lead  
17" h X 15" w  
The bird is optional.  
Available in Bronze.



**NO. 2208 FIGURES WITH SHELL**  
Lead, 25" h  
Shell 15" diameter  
Available in Bronze.



**NO. 2441A ST FRANCIS BIRDBATH**  
Lead  
19" h overall  
15" w shell  
Available in Bronze.





**NO. 2410S BIRDBATH WITH SQUIRREL & BIRD**

Lead  
15" diameter  
Shell is set on a Lead rock.  
Available in Bronze.



**NO. 2443 BIRDBATH SHELL WITH GIRL & FROG**

Lead  
18" h X 15" diameter  
Available in Bronze.



**NO. 2410B BIRDBATH**  
Lead  
21" diameter  
Available in Bronze.



**NO. 2410 BIRDBATH**

Lead  
Available in two sizes:  
15" diameter X 9" h,  
21" diameter X 11" h  
Available in Bronze.



**NO. 2447 BASHFUL GIRL ON SHELL WITH FROGS**

Lead  
26" h X 15" diameter  
May be used as fountain or birdbath.



**NO. 2175 WATERLILY**

Lead  
14 3/4" l X 11 3/4" w  
Additional hand-formed sizes on request.  
Available in Bronze.

# BIRD BATHS



**NO. 2516 CATBIRD BIRDBATH**  
Lead  
15"h  
Available in Bronze.



**NO. 2517 BIRDBATH WITH TWO BIRDS**  
Lead  
11"h  
Available in Bronze.



**NO. 2518 BIRDBATH WITH PIGEON**  
Lead  
12"h  
Available in Bronze.



**NO. 2519 PAN & PIPES BIRDBATH**  
Lead  
15"h  
Available in Bronze.



**NO. 2826 SHELL & FROG BIRDBATH**  
Lead  
24"w

Furnished so it can be piped for water or a recirculating pump. Base is No. 526, is 14" on the diagonal and can be used with any shell. Base is Cast Stone. Available in Bronze.



**NO. 2520 THREE SONGSTERS BIRDBATH**  
Lead  
11"h  
Available in Bronze.



**NO. 2007A SHELL BIRDBATH ON SPECIAL BASE**

Lead  
36" diameter  
Birdbath sits on a special Cast Stone, fluted, ornamented base.  
English model.



**NO. 2024 BIRD BATH**

Lead  
14"h, 15" diameter  
English Lead antique reproduction bird feeder or font. Looks very attractive on a Cast Stone block to get more elevation.  
Available in Bronze.



**NO. 2401 BIRD BATH SHELL ON LEGS**

Lead  
15" diameter  
Available in Bronze.



**NO. 2402 BIRD BATH ON LEGS**

Lead  
15" diameter  
Available in Bronze.



**NO. 2402C ENGLISH BIRD BATH**

Lead  
15" diameter  
Available in Bronze.



**NO. 2402B BIRD BATH WITH ORNAMENTED FOOT**

Lead  
15" diameter  
Available in Bronze.

# BIRD BATHS



**NO. 1551B BIRDBATH  
WITHOUT BIRDS**

Cast Stone, 10"h  
Also available with Lead feeder.



**NO. 2889B CHILD WITH FLUTES  
ON BASE W/SNAIL**

Lead, 17"h  
Set on Lead bird bath base. Can be had  
with different arrangements of animals.  
Available in Bronze.



**NO. 1551C BIRDBATH  
WITH LEAD SQUIRREL  
NO. 2140**

Cast Stone feeder  
Also available in Lead.



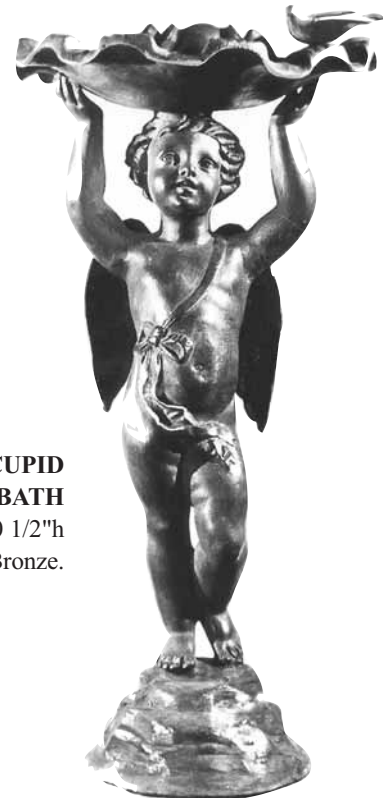
**NO. 2885 "WENDY" FIGURE**

Lead, 38"h  
Antique reproduction. Can be piped  
for water from shell.



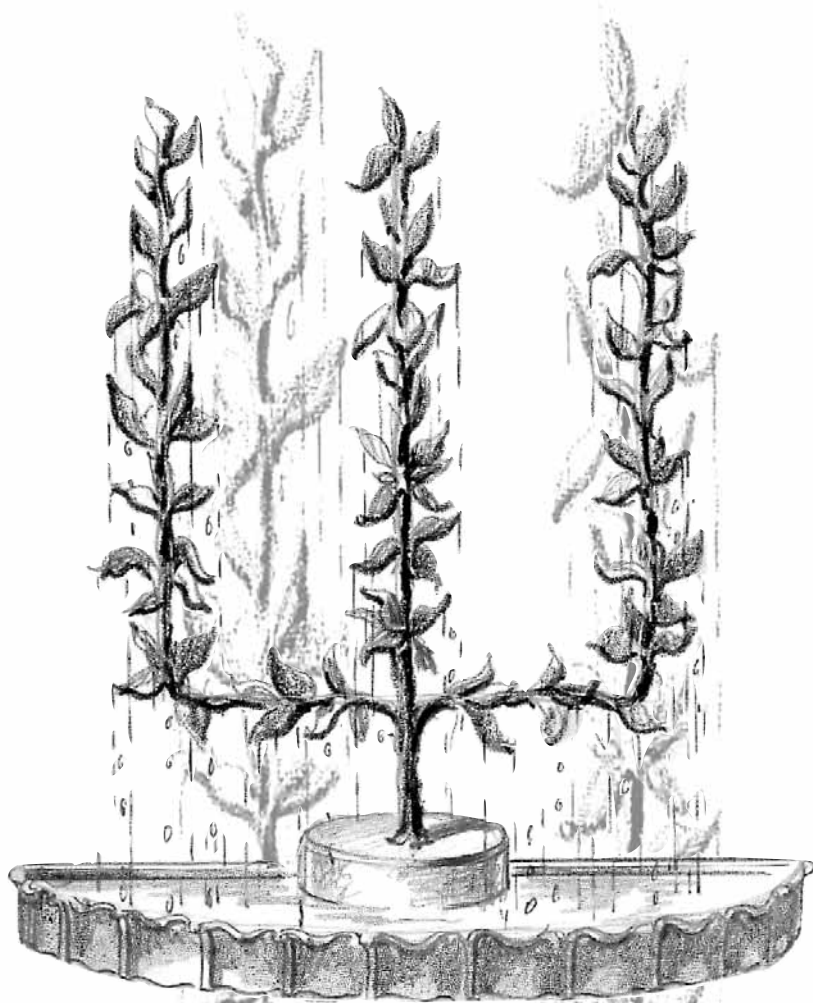
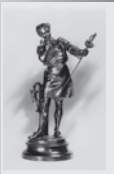
**NO. 2407 CUPID  
BIRDBATH**

Lead, 30 1/2"h  
Available in Bronze.



**NO. 2406 CUPID  
SHELL BIRDBATH**

Lead, 30 1/2"h  
Available in Bronze.



**T**he idea of the raintree came from the East where the people deeply felt great benefit from the rain as a gift from heaven.

Concerning the workings of the raintree, the water is pumped up into the very top branches, allowing it to run downward over the lower branches and leaves. The rainfall from these branches should be gentle and not a spray. The owner must be prepared to adjust and bend the leaves into proper alignment if they are not feeding adequately. Also, it is of paramount importance to keep these fountains clean and free of debris at all times. If the branches fill with matter, the tubes which supply the “rain” will become clogged. For best results a regular cleaning cycle is recommended and water should be filtered to remove all debris.

Concerning the size of the pool you must use, assuming that the tree in general is round or half-round, the pool must be double the radius of the tree. The water is then recirculated with a pump. (See diagram on the next page.)



#### **NO. 893 RAIN TREE**

All Copper raintree, 3', 4', 5', 6', 7', 8', 9', 10' h.

Pumpcase is extra. Pool diameter should not be less than 1 1/2 times the height of the tree.



# RAINTREES



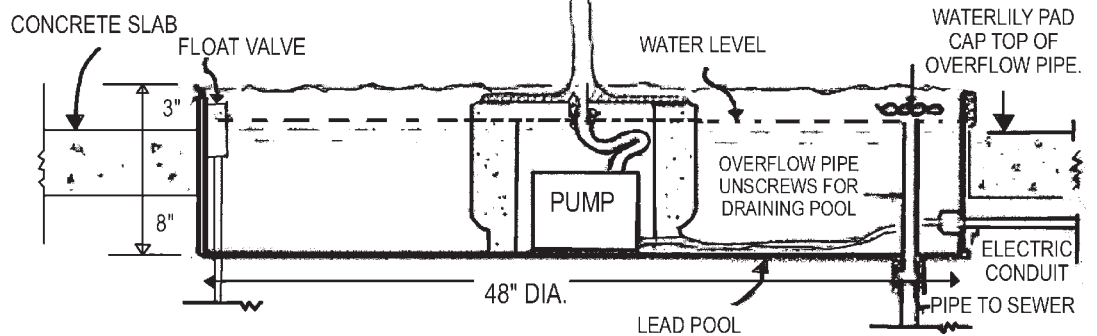
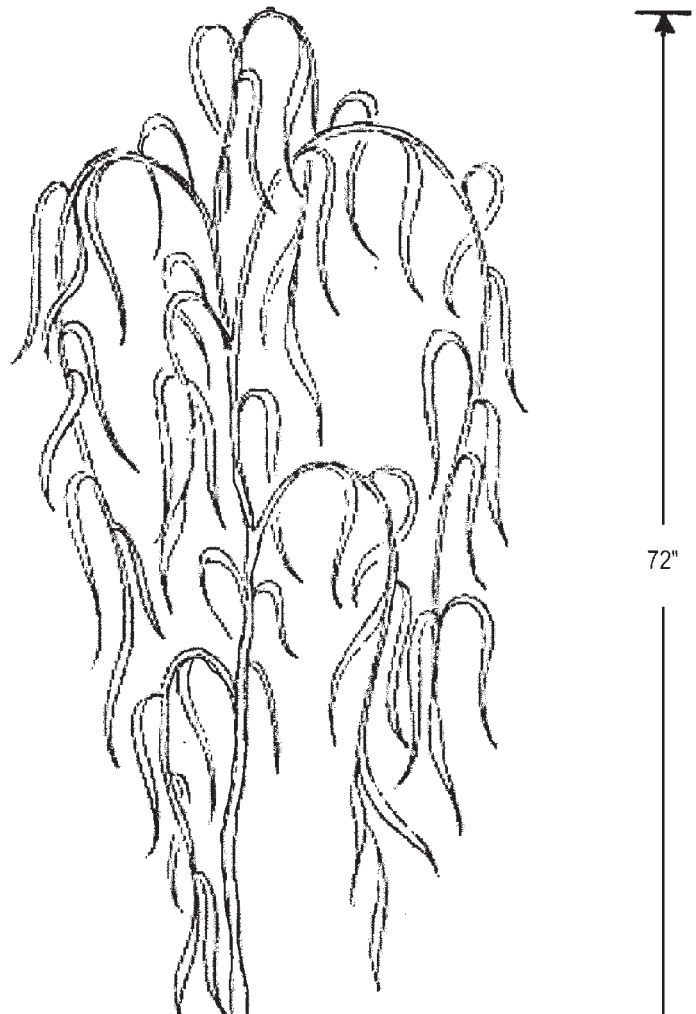
**NO. 4092 WEEPING WILLOW RRAINTREES**  
Copper, 6'h X 6'w  
Other sizes to order.  
Green patina, piped for water.

**NOTE:**  
*The height dimension is measured from the floor to the top of the tree. All raintrees are custom made. Sizes shown are suggested and can be customized within reason. All raintrees are made of Bronze and Copper.*

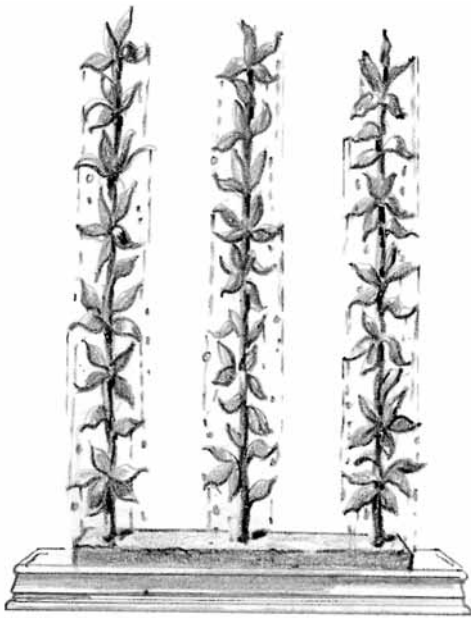
## THE WORKINGS OF A RAIN TREE



**NO. 4094 WEEPING WILLOW RRAINTREE**  
Copper, 6'h

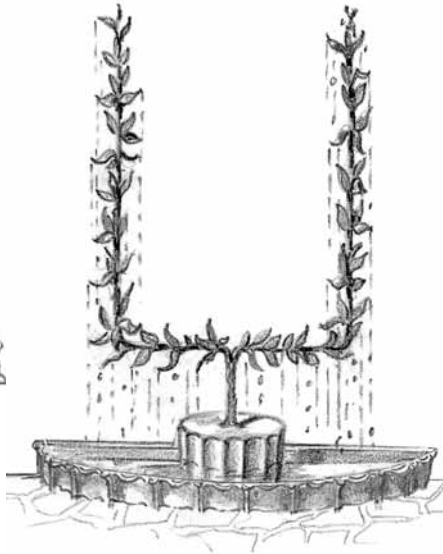


# RAINTREES



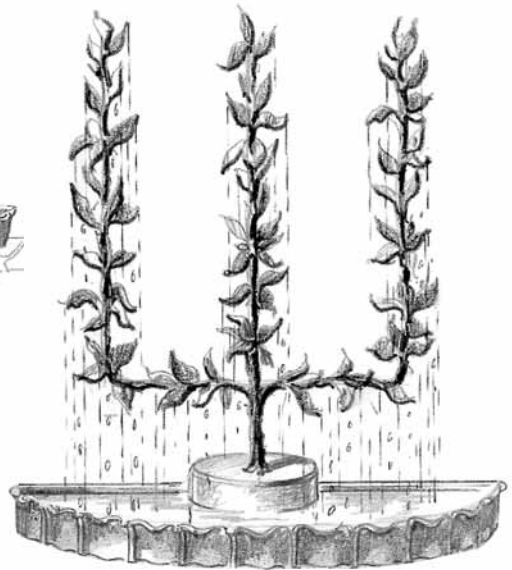
**NO. 4630 ESPALIER RAIN TREE**

Bronze, 6'h X 4'w  
The base is the pumpcase.  
Pool is purchased separately.



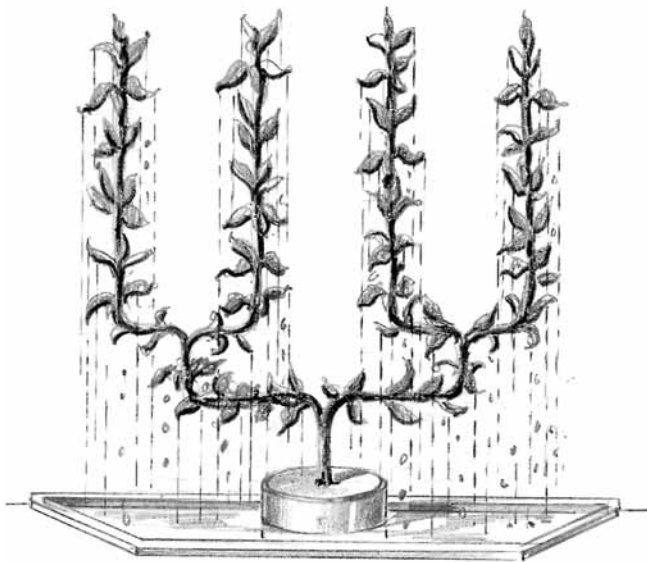
**NO. 4631 ESPALIER RAIN TREE**

Bronze, 6'h X 3'w  
The base is the pumpcase.  
Pool is purchased separately.



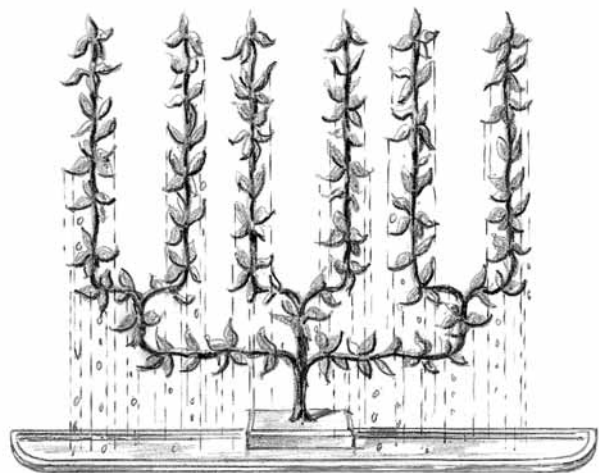
**NO. 4632 ESPALIER RAIN TREE**

Bronze, 6'h X 3'w  
The base is the pumpcase.  
Pool is purchased separately.



**NO. 4633 ESPALIER RAIN TREE**

Bronze, 6'h X 6'w  
The base is the pumpcase. Pool is purchased separately.



**NO. 4635 ESPALIER RAIN TREE**

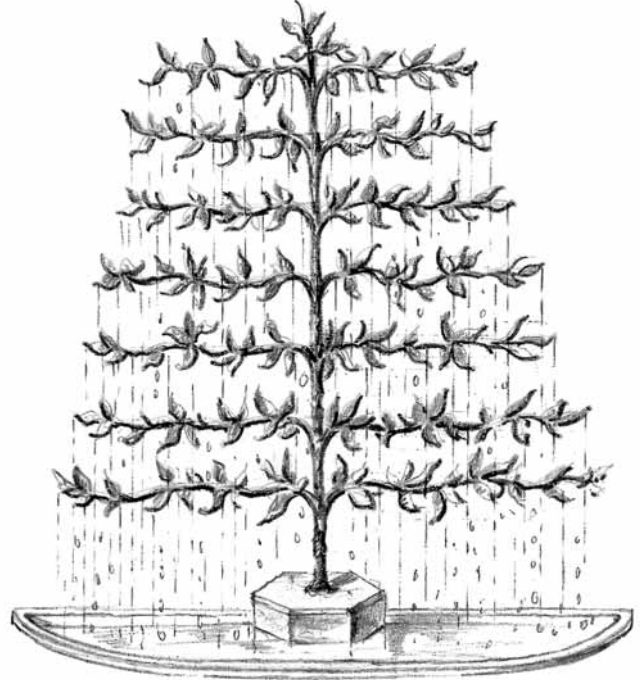
Bronze, 6'h X 6'w  
The base is the pumpcase. Pool is purchased separately.

*NOTE:*  
The height dimension is measured from the floor to the top of the tree. All raintrees are custom made. Sizes shown are suggested and can be customized within reason. All raintrees are made of Bronze and Copper.



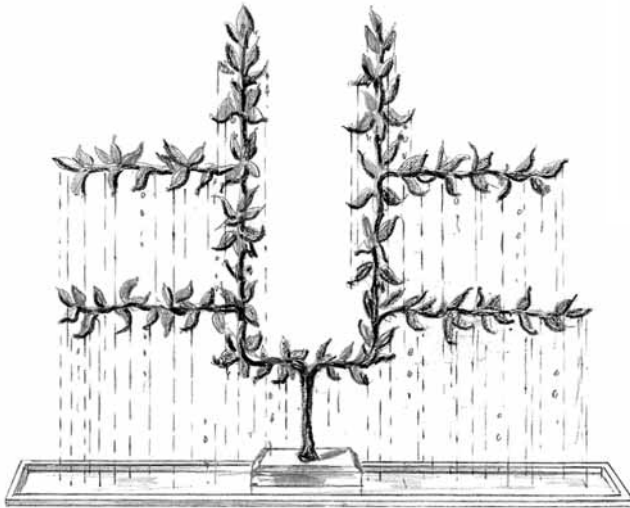


**NO. 4629 ESPALIER RAIN TREE**  
Bronze, 6'w



**NO. 4637 ESPALIER RAIN TREE**

Bronze, 8'h X 6'w  
The base is the pumpcase. Pool is purchased separately.

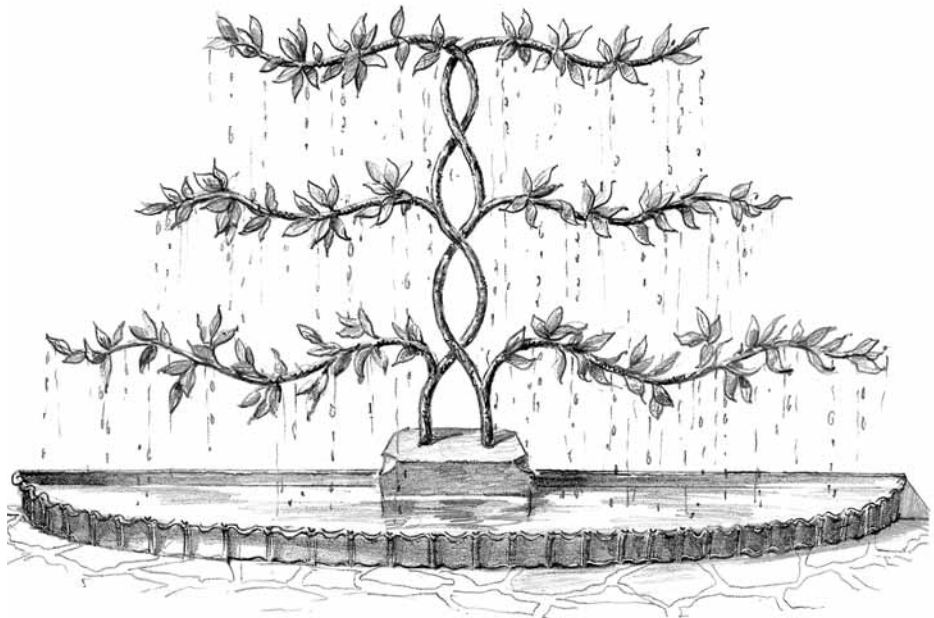


**NO. 4634 ESPALIER RAIN TREE**

Bronze, 6'h X 6'w  
The base is the pumpcase.  
Pool is purchased separately.

*NOTE:*  
The height dimension is measured from the floor to the top of the tree. All raintrees are custom made. Sizes shown are suggested and can be customized within reason. All raintrees are made of Bronze and Copper.

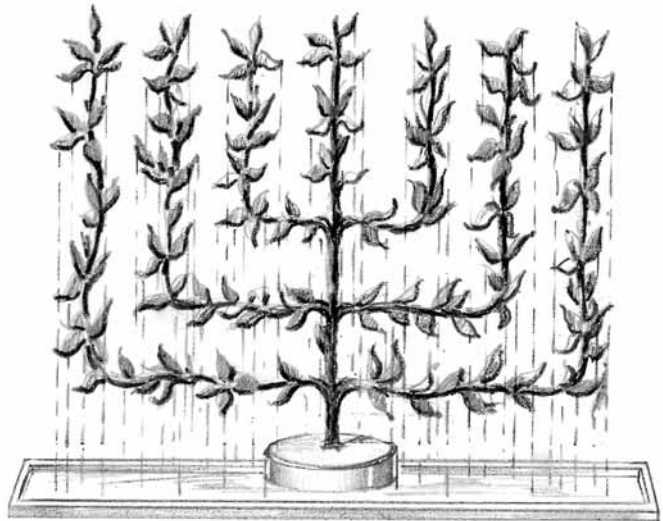
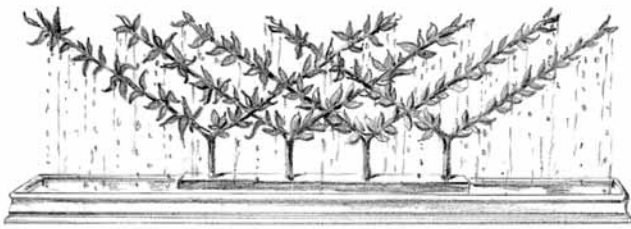
**NO. 4638 ESPALIER RAIN TREE**  
Bronze, 6'h X 8'w  
The base is the pumpcase.  
Pool is purchased separately.



# RAINTREES

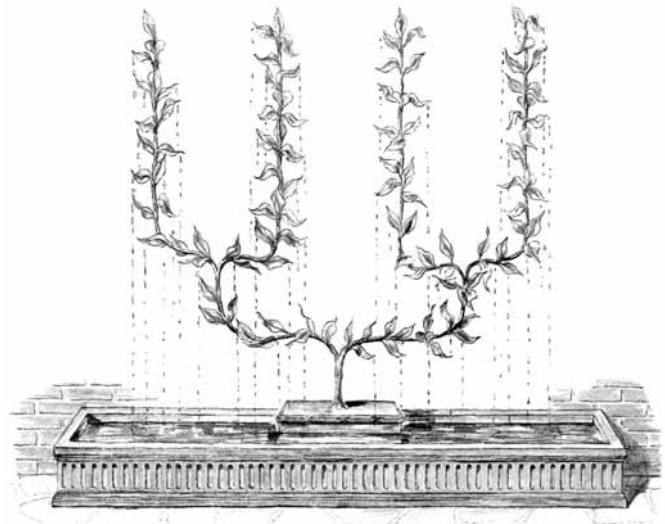
**NO. 4636 ESPALIER  
RAINTREE**

Bronze, 6'h X 8'w  
The base is the pumpcase.  
Pool is purchased separately.



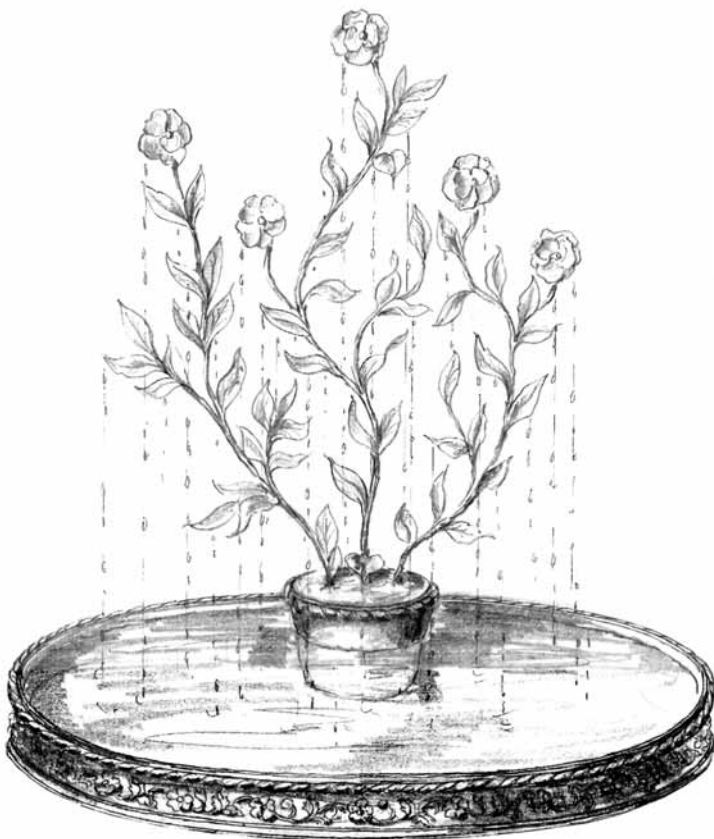
**NO. 4639 ESPALIER RRAINTREE**

Bronze  
Each tree is 6'w X 3'h  
The base is the pumpcase.  
Pool is purchased separately.



**NO. 4715 RRAINTREE WITH  
CAST STONE POOL**

Bronze  
6'w X 6'h, pool 8'l X 10'h overall X 22" w  
Other recommendations can be made on a pool. Raintree  
uses design No. 4633. Tree should be connected back to a  
wall to overcome any vibration.



**NO. 4719 FLOWERING RRAINTREE WITH LEAD POOL**

Copper, 4'6" h  
The pump is located in the Lead base of the Raintree.  
The Lead pool is made of border No. 2346, and is  
5" h X 66" diameter.

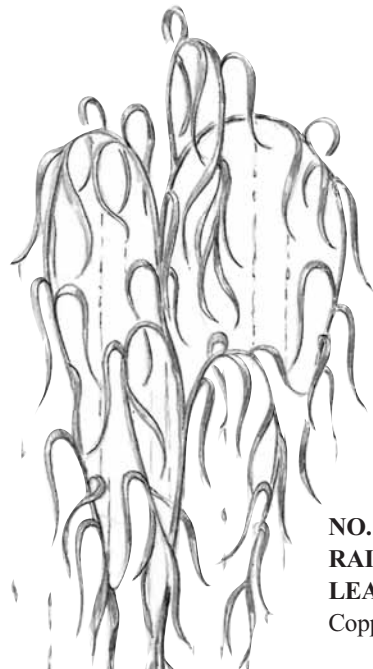
*NOTE:*  
The height dimension is  
measured from the floor to  
the top of the tree. All  
raintreees are custom made.  
Sizes shown are suggested  
and can be customized  
within reason.  
All raintreees are made of  
Bronze and Copper.



**NO. 4716 WILLOW RAIN TREE WITH LEAD POOL**  
Copper, 6'h, pool 3' X 6'  
The pool is ornamented with Zodiac ornaments and the pump is contained in the pumpcase. It is designed to go against a wall. However, it can be made to work in the full round and it can be made to be illuminated. Pool is made from Lead.



**NO. 4717 WILLOW RAIN TREE WITH LEAD PUMPCASE**  
Copper  
6'h X 2'6"w, pump case  
16" diameter X 8"h  
Rain tree is designed to go in a half round pool and should be located close to a wall. Pool size should be at least 6' wide and project not less than 48".



**NO. 4840 WILLOW RAIN TREE WITH LEAD POOL**  
Copper, 6'h

*NOTE:*  
The height dimension is measured from the floor to the top of the tree. All raintrees are custom made. Sizes shown are suggested and can be customized within reason. All raintrees are made of Bronze and Copper.



**NO. 4554 CATTAIL FOUNTAIN**  
Bronze, 30"h  
Pump can be located in base. Special sizes to order.

