

# Statuary

# STATUARY



**NO. 1031 HUNTER**  
 Cast Stone, 59"h  
 Base 21" x 15" ~~Base 19" X 15"~~  
 This is a most attractive piece.



**NO. 1030 HUNTRESS**  
 Cast Stone, 59"h  
 Base 19" X 15"  
 This is a companion  
 piece to the Hunter.



**NO. 1123 COLONIAL PERIOD MALE**  
 Cast Stone, 36"h  
 Base 12" X 12"



**NO. 1124 COLONIAL PERIOD FEMALE**  
 Cast Stone, 36"h  
 Base 12" X 12"



**NO. 1773 ENGLISH COUNTRY FIGURE**  
 Cast Stone, 31"h  
 10 3/4" sq. base



**NO. 2863 "SHEPHERD"  
WITH VIOLIN & BRONZE BOW**

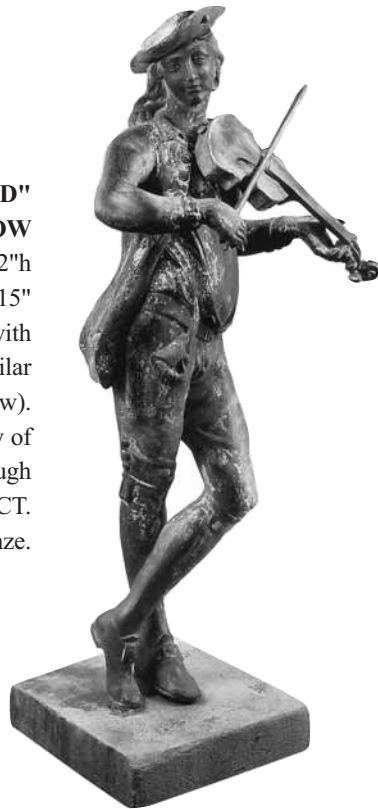
Lead, 52"h

Base 15" x 15"

This figure is also furnished with a shepherd's crook and similar arrangements (See below).

Original model courtesy of Mr. Carrol Cavanaugh of Norwalk, CT.

Available in Bronze.



**NO. 1125 COLONIAL WOMAN**

Cast Stone, 48"h

This figure can be used with No. 1317 pedestal.



**NO. 1126 COLONIAL MAN**

Cast Stone, 48"h

can do it justice. This figure can be used with No.1317 pedestal.



**NO. 2863A "SHEPHERD"  
WITH BRONZE CROOK**

Lead, 52"h

Base 15" x 15"

Original model courtesy of Mr. Carrol Cavanaugh of Norwalk, CT. Available in Bronze.



**NO. 2862 "SHEPHERDESS"**

Lead, 51"h

Base 15" x 15"

This reproduction is courtesy of The Carrol Cavanaugh Collection. Available in Bronze.



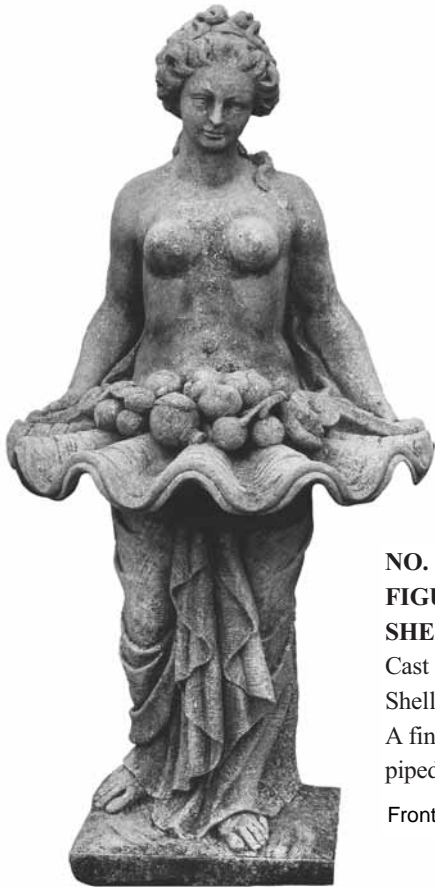
**NO. 4991 COSTUMED FIGURE WITH  
MUSICAL INSTRUMENT**

Cast Stone, 50"h

Base 4 1/2"h X 12" X 15"

Unusual bold carving makes this figure an excellent resting place for bits of vegetation which will support moss and assist the patina in years to come.





**NO. 1034 CLASSICAL FEMININE  
FIGURE OFFERING FRUIT ON A  
SHELL**

Cast Stone, 63"h  
Shell 30"w. Base 15" X 18 1/2"  
A fine piece of sculpture. May be  
piped through shell.  
Front to back 27"

**NO. 1040 BATHING FIGURE**

Cast Stone, 63"h  
Base 18 1/2" X 15"



**NO. 1070 HEBE**

Cast Stone, 66"h  
Base 16" X 16"  
Can be piped through pitcher.



**NO. 2428 GANYMEDE**

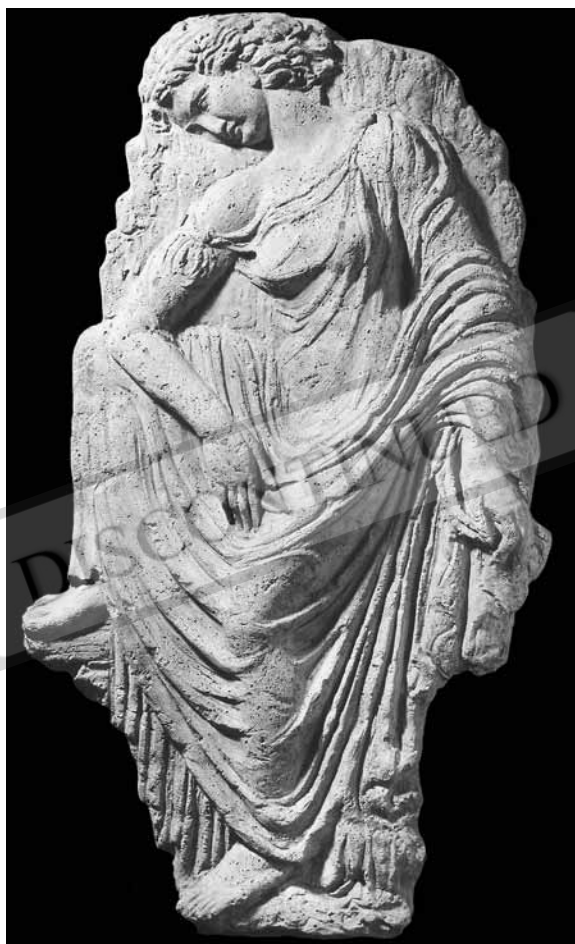
Lead, 66"h  
Pool is separate.  
Available in Bronze.



**NO. 844 GRECIAN MAIDEN**  
Cast Stone  
63 1/2"h X 24"w X 14"d



**NO. 845 GRECIAN YOUTH**  
Cast Stone  
65"h X 26"w X 19"d



**NO. 846 GODDESS ATHENA PLAQUE**  
Cast Stone  
56"h X 32 1/2"w X 5"d



**NO. 834 GRECIAN CARYATID**  
92" Cast Stone,  
91" X 30"w X 14"d

**NO. 834A GRECIAN CARYATID**  
Cast Stone,  
43"h X 15"w X 6"d  
This piece is available as a pedestal that has 4 identical figures facing outwards and is 44"w X 20"d.  
Please inquire.

# STATUARY



**NO. 518 FEMALE NUDE  
FIGURE**

Cast Stone, 60"h  
Pedestal not included.



**NO. 314 FEMALE  
NUDE FIGURE**

Cast Stone, 57"h  
Base 10" X 17"



**NO. 962 FIGURE OF BATHER**

Cast Stone, 33"h  
Base 10 1/2"w



**NO. 992 FOUNTAIN FIGURE  
WITH JUG**

Cast Stone, 38 1/2"h. Piped.



**NO. 961 FOUNTAIN FIGURE  
WITH JUG**

Cast Stone, 33"h. Piped.





**NO. 2865 NUDE  
GARDEN FIGURE**  
Lead, 24" h  
The sculptor is unknown.  
This is a very attractive  
piece.  
Available in Bronze.



**NO. 5424 MERMAID SEATED  
ON ROCK**  
Cast Stone, 52" h  
Base 30" X 19"  
In our opinion it is the best of  
the mermaid statues by Geraldine  
Lewis-Amendola.  
Available in Lead or Bronze.



**NO. 315 DANISH MERMAID**  
Cast Stone, 42" h  
Base 15" X 24"  
Similar to the one in the  
Copenhagen harbor.

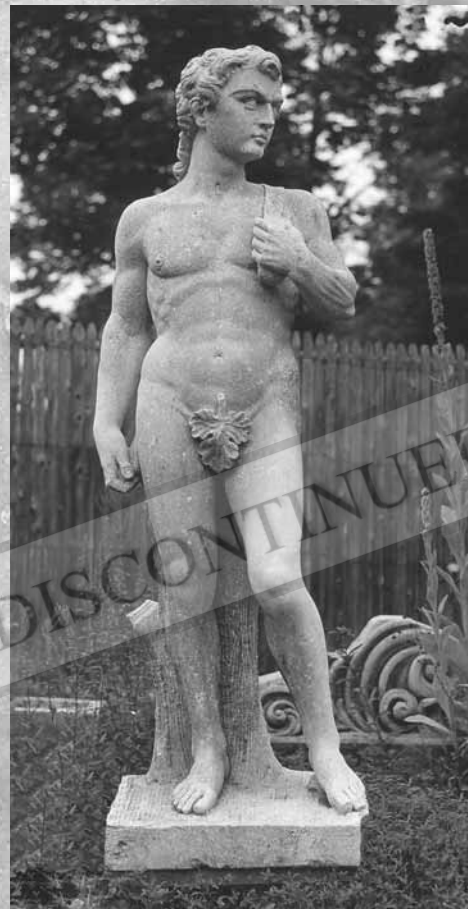
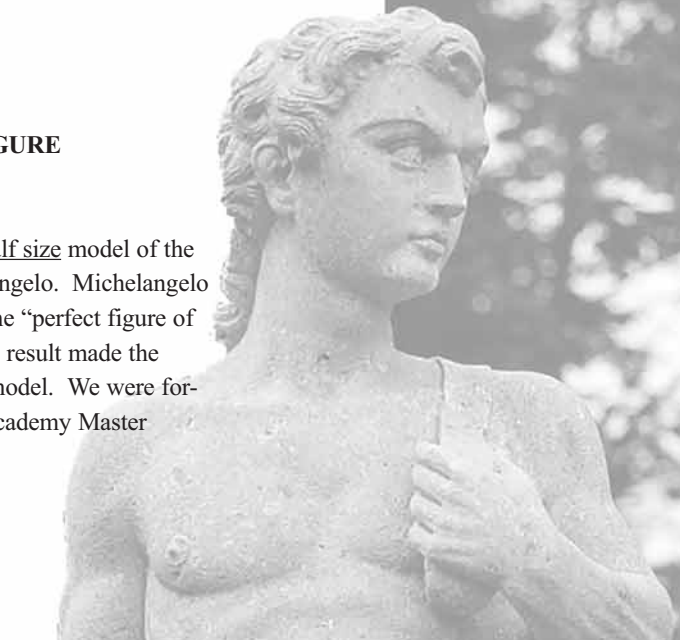
## NO. 4953 "DAVID" FIGURE

Cast Stone, 82" h

Base 23" X 24"

This David is an exact half size model of the original done by Michelangelo. Michelangelo had the desire to create the "perfect figure of the young male" and as a result made the heroic-size carving and model. We were fortunate in having a fine Academy Master available to carve this.

1400 lbs



## NO. 5568 "DAVID"

Cast Stone

59 1/2" h

Base 15 1/2" X 17 1/2"

This piece was done by a member of the academy in Florence, Italy. Like many of these pieces inspired by the original David the sculptor introduces his own interpretation.





**NO. 271 FEMALE TORSO**  
Cast Stone, 29"h  
Base 12" X 8"



**NO. 4552 FEMALE TORSO**  
Lead, 13"h  
Base 6"  
The cube is made out of green  
and black marble.  
Available in Bronze.



**NO. 430 HALF TORSO  
FRAGMENT**  
Cast Stone, 33"h  
To be wall mounted.



**No. 4961 Front View**

**NO. 4961 FEMALE TORSO**  
Cast Stone, 44"h  
Base 16" X 15"  
This is unquestionably the best torso  
we have ever seen by Geraldine  
Lewis-Amendola. The care with  
which this sculpture is done is highly  
dramatic and impressive. The sculp-  
ture is viewable and enjoyable from  
all angles. A smaller version is  
available, No. 4552, 13"h.  
Available in Lead or Bronze.



**No. 4961 Rear View**

# BUSTS



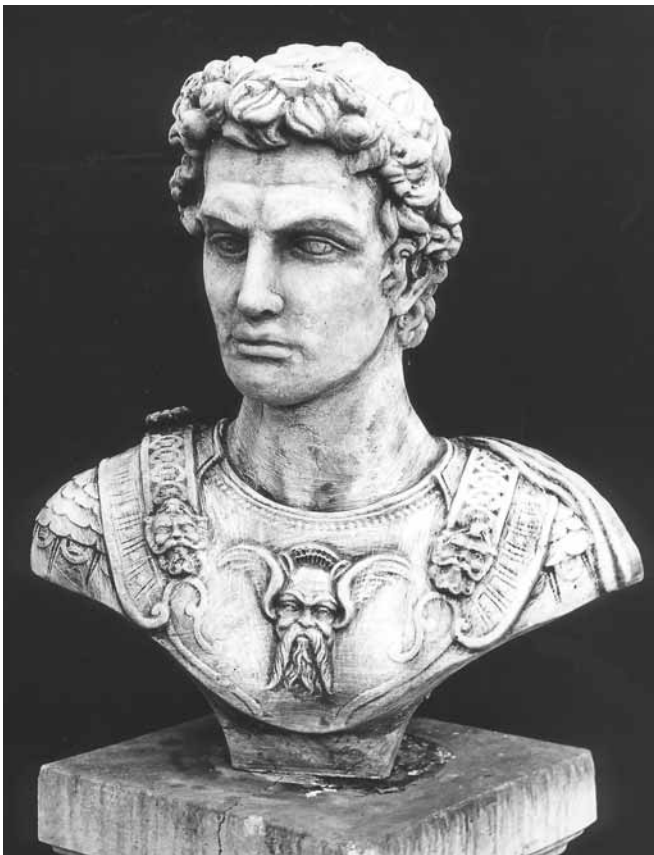
**NO. 1208 ROMAN BUST**

Cast Stone  
31 1/2" h X 20" w  
9 1/2" SQ Base



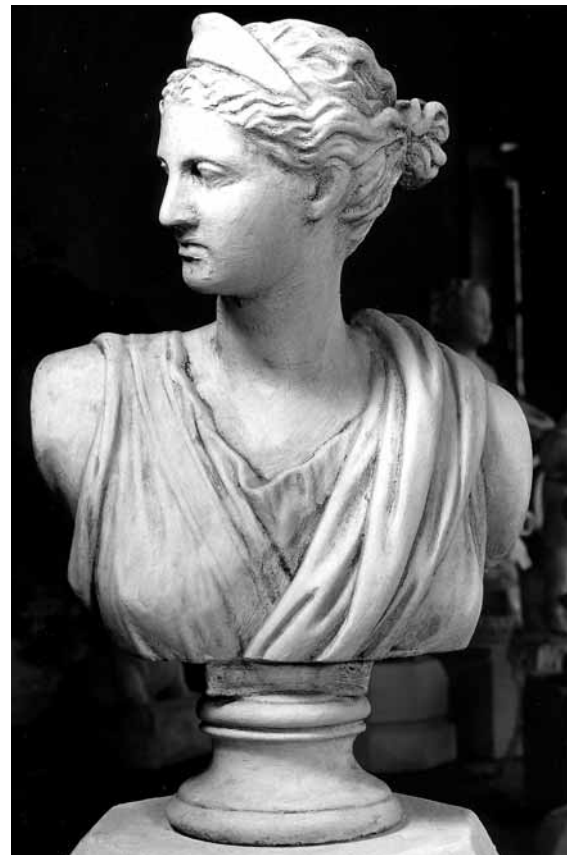
**NO. 1708 BUST OF HERMES**

Cast Stone  
30" h X 9" diameter  
Pedestal not included.



**NO. 1710 BUST OF CAESAR**

Cast Stone  
23" h  
Base is 5" square.  
Pedestal not included.



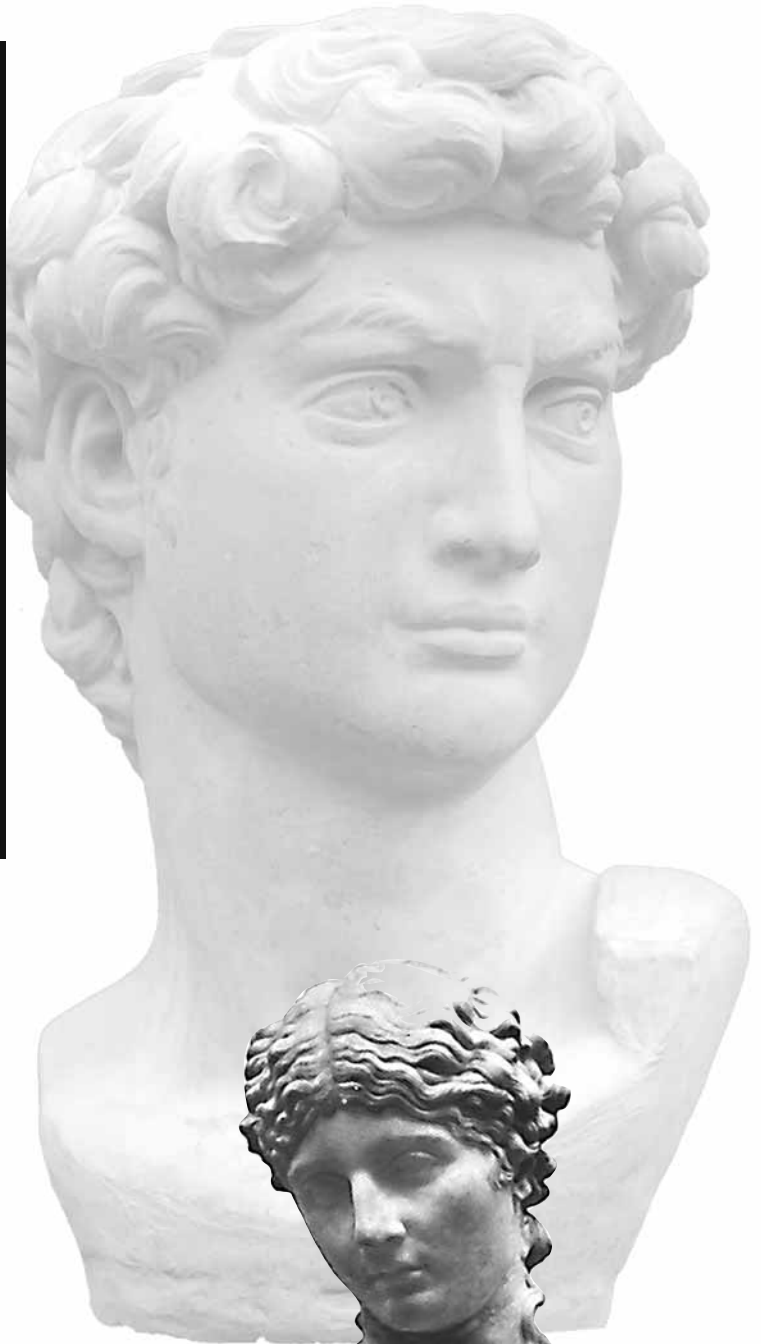
**NO. 465 VENUS**

Cast Stone  
19 1/2" h  
Pedestal not included.



**NO. 1760 BUST OF DAVID**

6 1/4" x 5" Oval Base Cast Stone  
17"h



**NO. 1727 BUST OF BEETHOVEN**

Cast Stone, 18"h  
Base 6" diameter  
Pedestal not included.



**NO. 5566 BUST OF ANTONIA**

Cast Stone  
22 1/2" h, Base 7 1/2"  
Pedestal not included.

# STATUARY



**NO. 2337 "FATHER NEPTUNE"**

Cast Stone

50"h, 14"sq. base

Can be piped up through the dolphin to 1 1/2". Works very well as a pool filler.



**NO. 2472 PAN WITH HORN**

Lead figure on Cast Stone base

28"h

Base 8"h X 13"w

Available in Bronze.



**NO. 2472A PAN WITH PIPES**

Lead figure on Cast Stone base

28"h

Base 8"h X 13"w

Available in Bronze.



**NO. 2472A ON A CAST STONE SHELL**



**NO. 2879 PAN ON ROCK WITH PIPES**

Lead, 18"h

With the Cast Stone base, which must be used, the height of this statue becomes nearer to 24". The flutes can be piped. This is not the most beautiful example of its period, but rather the reproduction of work of a country craftsman.

Late 17th century.

Available in Bronze.



**NO. 2880 PAN ON ROCK WITH TAMBOURINE**

Lead, 18"h

With the Cast Stone base, which must be used, the height of this statue becomes nearer to 24". This is not the most beautiful example of its period, but rather the reproduction of work of a country craftsman.

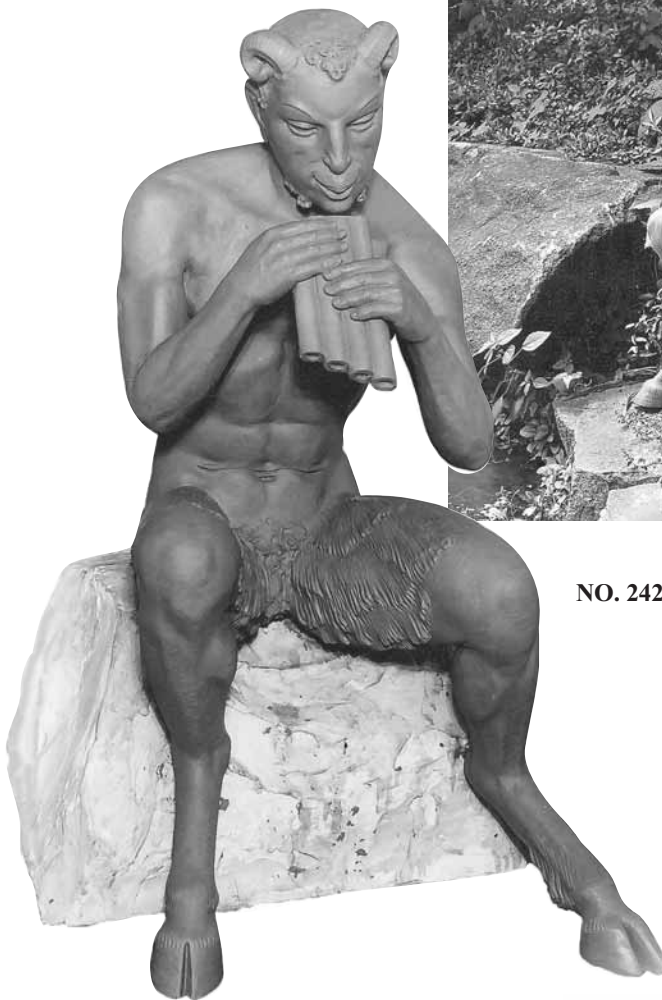
Late 17th century.

Available in Bronze.



**NO. 2000B PAN ON LEAD ROCK**

Lead  
13"h & 17"h  
Available in Bronze.



**NO. 2427 IN A GARDEN SETTING**



**NO. 2427 LIFE SIZE "PAN" FIGURE**

Lead, 41"h  
Design by Joseph Kuthmayer.  
Available in Bronze.



**NO. 1324 PAN WITH PIPES**

Lead, 33"h  
Base 12" X 13"  
Base is designed to hide a recirculating pump and is very stable.  
Available in Bronze.



**NO. 2220 PAN FIGURE**

Lead, 6 1/2"h  
Can be piped.  
Available in Bronze.



**NO. 4948 "NARCISSUS" FIGURE**

Lead, 42 1/2"h  
 28" front to back and  
 22" from side to side  
 Available in Bronze.



**NO. 2910 "YOUTHFUL NUDE"**

Lead, 44"h X 24"w from toe to top of head  
 The figure is life size and designed to sit on a rock. From the  
 bottom of the stone to the top of the head it is 48"h.  
 Available in Bronze.



2085

**NO. ~~2085A~~ ATLAS WITH SPHERE**

Cast Stone, 51"h  
 The figure is 36"h and the sphere adds  
 an additional 15" to the height.  
 Base 13" diameter, also available with  
 Sundial - 2085A



**NO. 2391 "HUNTER EPHEBO"**

Cast Stone, 52"h  
Base 13 1/2" X 13 1/2"  
Pedestal No. ~~507~~ is not included.  
2430

**NO. 2392 "HUNTRESS DIANA"**

Cast Stone, 52"h  
Base 14" X 14"  
Pedestal No. ~~507~~ is not included.  
2430



**NO. 2864 GARDEN FIGURE**

Lead, 33 1/2"h  
Exactly the correct period for certain things. This reproduction originates from England.  
Available in Bronze.



**NO. 4660 "JUSTICE" FIGURE**

Lead, 66"h  
With Bronze Staff and Scales  
This is an adaption of figure No.2859.  
It is most beautifully modeled showing the folds of the garment in excellent detail.  
Available in Bronze. 1100 lbs

**NO. 2859 HYGEIA, GODDESS OF HEALTH FIGURE**

Lead, 75"h  
From the late 19th century this is one of many copies. This copy was produced by the Bromsgrove Guild. These people were very skilled lead workers, producing well into the early 20th century, ceasing sometime in the early 1930's.  
Available in Bronze.



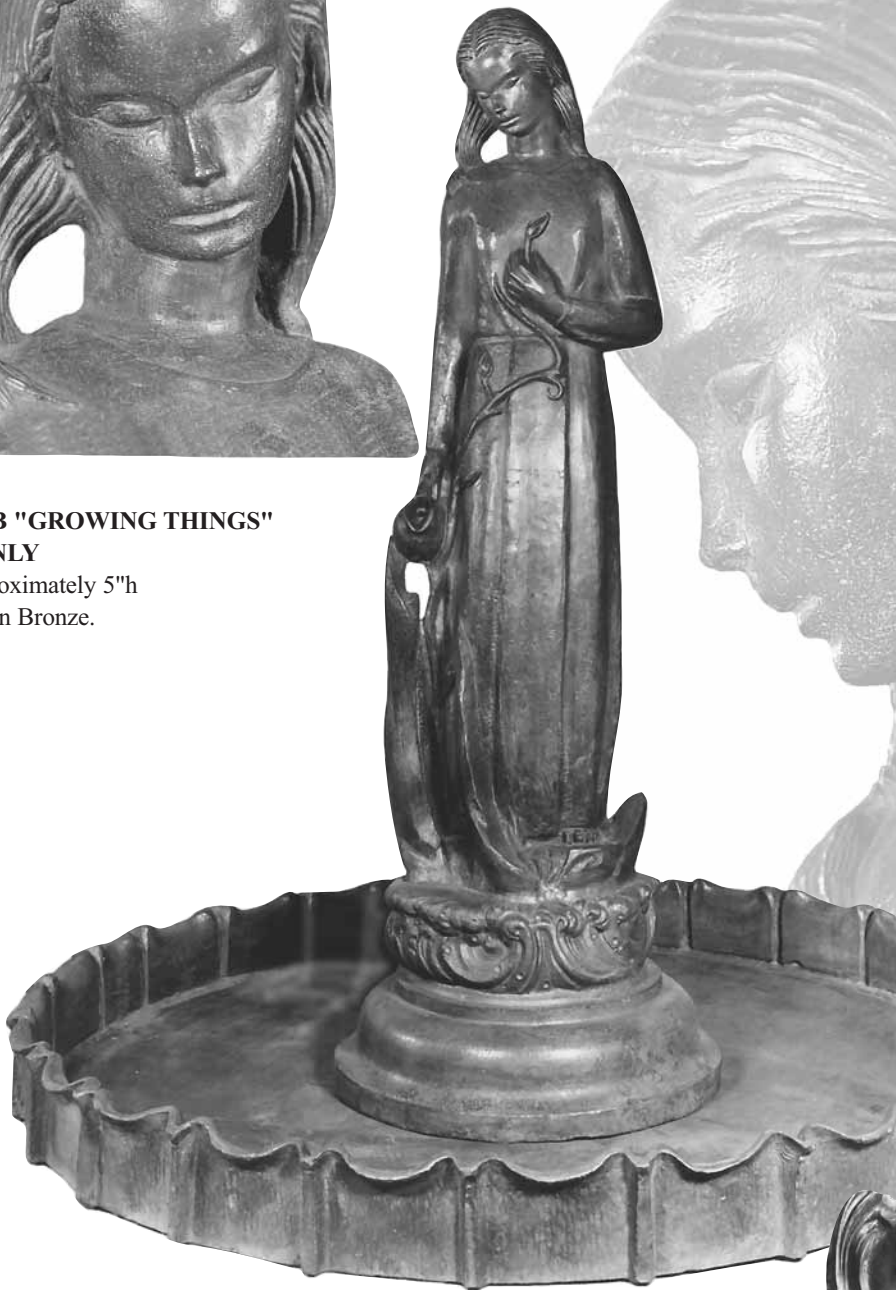


**NO. 1610B "GROWING THINGS"  
HEAD ONLY**

Lead, approximately 5"h  
Available in Bronze.



NO. 1610 SIDE VIEW



**NO. 1610A "GROWING THINGS" FOUNTAIN**

Lead, with base, pumpcase & pool  
Available with 33" figure only.  
Pool made from border No. 1503,  
48" diameter.  
Available in Bronze.

Base 8"H x 14" diameter. 41" overall with  
fountain.

**NO. 2911 "GROWING THINGS"  
FIGURE**

Lead  
Available in two sizes: 33"h or 52"h  
~~Base 16" X 16"~~  
Pitcher can be piped  
Available in Bronze.

33"H figure w/ 16" dia base. 52"H figure w/ 22"x10" dia  
base.







NO. 2875



NO. 2875

**NO. 2875 "TALL GRASSES" FIGURE**

Lead, 47"h

It depicts a young woman walking through the tall grasses wearing a sheer gown. This beautiful feminine figure, by Robert Amendola, will be one of the most remembered pieces of garden sculpture.

Available in Bronze.



## NO. 2961 GIRL WITH SHAWL

Lead, 60"h

Base 18" X 15" 900 lbs

The deep clefts in the lines of the garment make this a most beautiful piece of work. Note the details on the back of the figure. This is one of the finest castings that has ever been our privilege to make. The original was European but was lost during the war of 1914. Through kindness and courtesy of Geraldine Lewis-Amendola and working from photographic records in our possession, she produced this exquisite model, which is a joy to everyone who has ever seen it.

Available in Bronze.



**NO. 4839 "CHARTES" ANGEL**

Lead, 47"h

The original french antique angel model  
is in the Frick Museum in New York  
City and in the Louvre in Paris.  
Available in Bronze.



**NO. 4839 DETAILED  
FACIAL VIEW**

# STATUARY



**NO. 674E SERVER WITH DOG**  
Lead, 51" h  
Available in Bronze.



**NO. 674 PLATTER BOY HOLDING A PLATTER OF ROSES**

Lead, 51" h

This is a magnificent piece in very fine detail. Can be piped.  
Available in Bronze.



**NO. 674C SERVER WITH SHELL**  
Lead, 51" h  
Can be piped.  
Available in Bronze.



**NO. 674H SUPPLICANT FIGURE**

Lead, 51" h

This is a valuable reproduction of a famous English piece. He has been used as a game keeper with a fox (No. 674F), a bowman with a hunting bow or a warden with a fish (No. 674G).  
Available in Bronze.



**NO. 674D SERVER WITH SUNDIAL**

Lead, 51" h  
Available in Bronze.



# THE ELEMENTS



**NO. 1059 "AIR"**  
Cast Stone, 59"h  
Base 18 1/2" X 14 1/2"



**NO. 1060 "WATER"**  
Cast Stone, 59"h  
Base 18 1/2" X 14 1/2"



**NO. 1061 "EARTH"**  
Cast Stone, 59"h  
Base 18 1/2" X 14 1/2"



**NO. 1062 "FIRE"**  
Cast Stone, 59"h  
Base 18 1/2" X 14 1/2"

THE SEASONS



**NO. 993 "SPRING"**  
Cast Stone, 50"h  
Base 13 1/2" X 11



**NO. 994 "SUMMER"**  
Cast Stone, 50"h  
Base 13 1/2" X 11



**NO. 995 "AUTUMN"**  
Cast Stone, 50"h  
Base 13 1/2" X 11



**NO. 996 "WINTER"**  
Cast Stone, 50"h  
Base 13 1/2" X 11



# THE SENSES



**NO. 1032 SENSE "SOUND"**  
Cast Stone, 59"h  
Base 18 1/2" X 14 1/2"



**NO. 1033 SENSE "TASTE"**  
Cast Stone, 59"h  
Base 18 1/2" X 14 1/2"



**NO. 1056 SENSE "TOUCH"**  
Cast Stone, 59"h  
Base 18 1/2" X 14 1/2"



**NO. 1058 SENSE "SIGHT"**  
Cast Stone, 59"h  
Base 18 1/2" X 14 1/2"



**NO. 1057 SENSE "SMELL"**  
Cast Stone, 59"h  
Base 18 1/2" X 14 1/2"

THE SEASONS



**NO. 1071 SEASON "SPRING"**  
Cast Stone, 64"h  
Base 17" X 17"  
Use pedestal No.1092 for elevation.



**NO. 1072 SEASON "SUMMER"**  
Cast Stone, 64"h  
Base 17" X 17"  
Use pedestal No.1092 for elevation.



**NO. 1073 SEASON "AUTUMN"**  
Cast Stone, 64"h  
Base 17" X 17"  
Use pedestal No.1092 for elevation.



**NO. 1074 SEASON "WINTER"**  
Cast Stone, 64"h  
Base 17" X 17"  
Use pedestal No.1092 for elevation.





# THE SEASONS



**NO. 1156 "SPRING"**  
Cast Stone, 72"h  
Base 19" X 18"  
Pedestal No. 1092 is not included.



**NO. 1157 "SUMMER"**  
Cast Stone, 72"h  
Base 19" X 18"  
Pedestal No. 1092 is not included.



**NO. 1158 "AUTUMN"**  
Cast Stone, 72"h  
Base 19" X 18"  
Pedestal No. 1092 is not included.



**NO. 1159 "WINTER"**  
Cast Stone, 72"h  
Base 19" X 18"  
Pedestal No. 1092 is not included.

FIGURES



**NO. 1152 "ABUNDANCE"**  
Cast Stone, 68"h  
Base 19" X19"



**NO. 1153 "MUSIC"**  
Cast Stone, 68"h  
Base 19" X19"



**NO. 677 "VINTAGE"**  
Cast Stone, 60"h  
Base 19" X19"



**NO. 678 "HOSPITALITY"**  
Cast Stone, 60"h  
Base 19" X19"



# THE SEASONS



**NO. 1288 "SPRING"**  
Cast Stone, 49"h  
Base 13 1/2" diameter



**NO. 1289 "SUMMER"**  
Cast Stone, 49"h  
Base 13 1/2" diameter



**NO. 1290 "AUTUMN"**  
Cast Stone, 49"h  
Base 13 1/2" diameter



**NO. 1291 "WINTER"**  
Cast Stone, 49"h  
Base 13 1/2" diameter

THE SEASONS



**NO. 1023 SEASON**  
**"SPRING"**  
Cast Stone, 30"h  
Base 10" X 10"



**NO. 1025 SEASON**  
**"AUTUMN"**  
Cast Stone, 30"h  
Base 10" X 10"



**NO. 1024 SEASON**  
**"SUMMER"**  
Cast Stone, 30"h  
Base 10" X 10"



**NO. 1026 SEASON**  
**"WINTER"**  
Cast Stone, 30"h  
Base 10" X 10"



# THE SEASONS



**NO. 1338 "AUTUMN"**

Cast Stone  
32"h  
Base 10" X 10"  
Pedestal No. 1080 is  
not included.



**NO. 1339 "SUMMER"**

Cast Stone, 32"h  
Base 12" X 12"  
Pedestal No. 1080 is not included.



**NO. 1340 "WINTER"**

Cast Stone  
32"h  
Base 10" X 10"  
Pedestal No. 1080  
is not included.



**NO. 1341 "SPRING"**

Cast Stone, 32"h  
Base 10" X 10"  
Pedestal No. 1080 is not included.

THE SEASONS



**NO. 1224 "SPRING"**  
**PEASANT FIGURE**  
Cast Stone, 42"h  
Base approx. 12" X 12"



**NO. 1226 "AUTUMN"**  
**PEASANT FIGURE**  
Cast Stone, 42"h  
Base approx. 12" X 12"



**NO. 1225 "SUMMER"**  
**PEASANT FIGURE**  
Cast Stone, 42"h  
Base approx. 12" X 12"



**NO. 1227 "WINTER"**  
**PEASANT FIGURE**  
Cast Stone, 42"h  
Base approx. 12" X 12"



# THE SEASONS



**NO. 2014 "SPRING"**  
Lead, 16 1/2"h  
English model.  
Available in Bronze.  
6" diameter base



**NO. 2016 "AUTUMN"**  
Lead, 18"h  
English model.  
Available in Bronze.  
6" diameter base



**NO. 2015 "SUMMER"**  
Lead, 18"h  
English model.  
Available in Bronze.  
6" diameter base



**NO. 2017 "WINTER"**  
Lead, 16 1/2"h  
English model.  
Available in Bronze.  
6" diameter base

THE ELEMENTS

**NO. 1603 "EARTH"**

Lead, 30"h  
Base can be piped  
for water.  
Available in Bronze.



**NO. 1605 "AIR"**

Lead, 30"h  
Base can be piped for water.  
Available in Bronze.



**NO. 1602 "FIRE"**

Lead, 30"h  
Base can be piped for water.  
Available in Bronze.



**NO. 1604  
"WATER"**

Lead, 30"h  
Base can be piped  
for water.  
Available in Bronze.





# THE SEASONS

*These are created by Gifford M. Proctor, F.A.A.R., N.S.S. exclusively for Kenneth Lynch & Sons.*



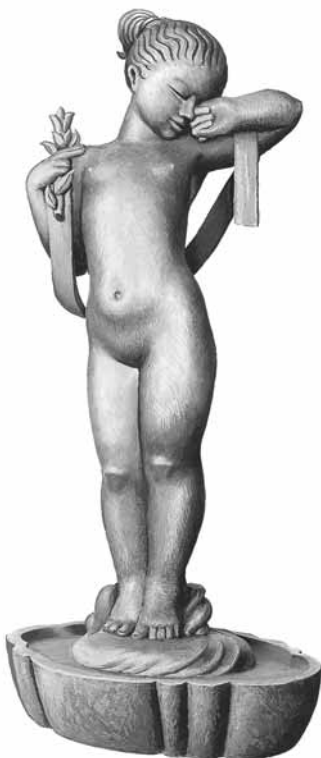
**NO. 1607 "SUMMER"**

Lead, 30 1/2"h  
Base 15"w X 4 1/2"h X 10"d  
This wonderful, strong young man with a sunflower in his hand and a bee on the sunflower. Base can be piped for water jets.  
Available in Bronze.



**NO. 1609 "WINTER"**

Lead, 31 1/2"h  
Base 15"w X 4 1/2"h X 10"d  
A bright fellow with a scarf around his neck, snowflake in his hand and on his shoulder and a bird nestling against his body. Base can be piped for water jets.  
Available in Bronze.



**NO. 1606 "SPRING"**

Lead, 32 3/4"h  
Base 15"w X 4 1/2"h X 10"d  
A lovely little girl with a flower in her hand just awakening with the blooms.  
Base can be piped for water jets.  
Available in Bronze.



**NO. 1608 "AUTUMN"**

Lead, 29"h  
Base 15"w X 4 1/2"h X 10"d  
A charming little girl with a scythe and wheat.  
Base can be piped for water jets.  
Available in Bronze.

THE SEASONS



**NO. 2200 "SPRING"**  
Lead, 19"h  
Available in Bronze.  
8 1/2" diameter base



**NO. 2202 "AUTUMN"**  
Lead, 19"h  
Available in Bronze.  
8 1/2" diameter base



**NO. 2201 "SUMMER"**  
Lead, 19"h  
Available in Bronze.  
8 1/2" diameter base



**NO. 2203 "WINTER"**  
Lead, 19"h  
Available in Bronze.  
8 1/2" diameter base



# THE SEASONS



**NO. 2204 "SPRING"**

Lead, 43"h  
Base 13" diameter  
English origin.  
Available in Bronze.



**NO. 2206 "AUTUMN"**

Lead, 43"h  
Base 13" diameter  
English origin.  
Available in Bronze.



**NO. 2205 "SUMMER"**

Lead, 45"h  
Base 13" diameter  
English origin.  
Available in Bronze.



**NO. 2207 "WINTER"**

Lead, 43"h  
Base 13" diameter  
English origin.  
Available in Bronze.

THE SEASONS



**NO. 2464 "SUMMER"**  
Lead, 25"h  
Fine old English model.  
Available in Bronze.  
9" diameter base



**NO. 2465 "AUTUMN"**  
Lead, 25"h  
Fine old English model.  
Available in Bronze.  
9" diameter base



**NO. 2466 "WINTER"**  
Lead, 25"h  
Fine old English model.  
Available in Bronze.  
9" diameter base



**NO. 2467 "SPRING"**  
Lead, 25"h  
Fine old English model.  
Available in Bronze.  
9" diameter base



# WHEN THE GODS WERE CHILDREN



**NO. 1638 "IRIS" FIGURE & BASE**

Lead, 26"h

The child of Thaumas and the ocean nymph Electra. Goddess of the rainbow, messenger of Jupiter and Hera. The peacock was her favorite bird.

Available in Bronze.

**NO. 1640 "DIANA" FIGURE & BASE**

Lead, 28 1/2"H

Child of Jupiter and Latona. Goddess of the chase, chaste and the woods. The twin sister of Apollo. Available in Bronze.



**NO. 1639 "VULCAN" FIGURE & BASE**

Lead, 30"h

The child of Jupiter and Juno. God of fire and metalworking. Consort to Venus and forger of thunderbolts for Jupiter.

Available in Bronze.



**NO. 1641 "NEPTUNE" FIGURE & BASE**

Lead, 31"h

Trident Spear Is Bronze. Child of Saturn and Ops. One of a large family of children. Brother of Ceres, Jupiter, Juno, Pluto, and Vesta. God of the sea and water generally. Available in Bronze.

WHEN THE GODS WERE CHILDREN



**NO. 1634 "CERES"  
FIGURE & BASE**

Lead, 29"h  
A child of Saturn and Rhea. A divinity of earth, sister of Jupiter, Juno, Pluto, Vesta, and Neptune, Goddess of agriculture, fruitful soil and civilization.  
Available in Bronze.



**NO. 1636 "APOLLO"  
FIGURE & BASE**

Lead, 31 1/2"h  
A child of Jupiter and Latona and Diana's twin. God of manly youth, beauty, poetry, music and healing. The ideal of fairness, a pure and just God requiring clean hands and a pure heart of those who worshiped him.  
Available in Bronze.



**NO. 1635 "VENUS"  
FIGURE & BASE**

Lead, 32 1/2"h  
A child of Jupiter and Diana. Goddess of love, beauty, gardens, flowers, the rose, myrtle and linden.  
"Everywhere at the touch of her feet the herbage quivered into flower."  
Available in Bronze.



**NO. 1637 "HERCULES"  
FIGURE & BASE**

Lead, 31"h  
The son of Jupiter and Alcemene. A hero celebrated for his strength. As a child he strangled a serpent sent by Hera to devour him. He and Achilles were educated by Cheiron, a learned centaur.  
Available in Bronze.



# WHEN THE GODS WERE CHILDREN



**NO. 4642 "POSIDEN" FIGURE & BASE**

Lead, 33"h

Trident Spear Is Bronze.

Son of Cronos and Rhea. One of a large family of children. Brother of Zeus and Hades. God of the sea and water generally.

Available in Bronze.



**NO. 4643 "MERMAID" FIGURE & BASE**

Lead, 33"h

Daughter of Posiden.

Available in Bronze.



**NO. 4644 "HERCULES" FIGURE & BASE**

Lead, 33"h

The son of Zeus and Alcmene. A hero celebrated for his strength. As a child he strangled a serpent sent by Hera to devour him. He and Achilles were educated by Cheiron, a learned centaur.

Available in Bronze.



**NO. 4645 "APHRODITE" FIGURE & BASE**

Lead, 33"h

Greek goddess of love, beauty, gardens, flowers, the rose, myrtle and linden. "Everywhere at the touch of her feet the herbage quivered into flower."

Available in Bronze.

WHEN THE GODS WERE CHILDREN

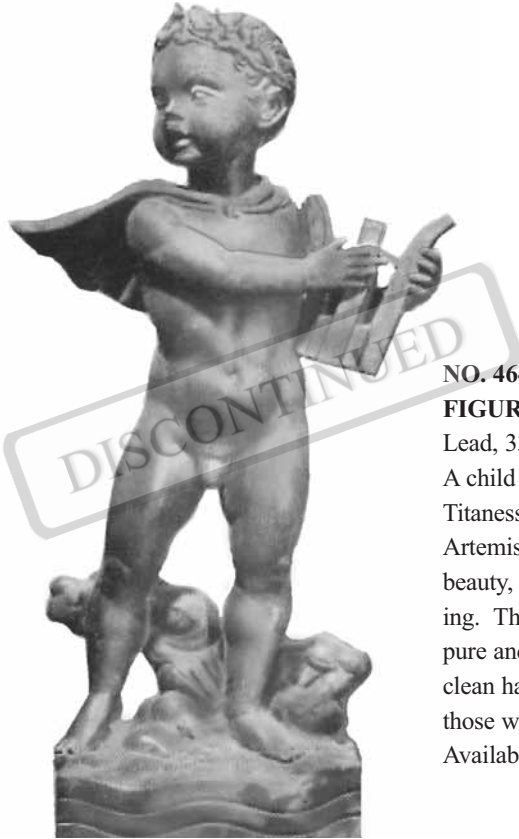


**NO. 4646 "ARTEMIS" FIGURE & BASE**

Lead, 33"H

The daughter of Titaness Leto and Zeus and the twin sister of Apollo, Adopted by the Greeks as the virgin goddess of the Wild.

Available in Bronze.



**NO. 4647" APOLLO" FIGURE & BASE**

Lead, 33"h

A child of Zeus and the Titaness Leto, and the twin of Artemis. God of manly youth, beauty, poetry, music and healing. The ideal of fairness, a pure and just God requiring clean hands and a pure heart of those who worshiped him.

Available in Bronze.



**NO. 4648 "PAN WITH FLUTE" FIGURE & BASE**

Lead, 33"H

He was the son of the messenger god Hermes. As the Greek god of the mountainside, the pastures of sheep and goats, he himself was goat-horned and goat-legged.

Available in Bronze.



**NO. 4649 "HERMES" FIGURE & BASE**

Lead, 33"H

The Greek messenger god and the son of Zeus. He enjoyed playing tricks and games.

Roman equivalent is Mercury.

Available in Bronze.





**NO. 25 "FISHER BOY"**  
Cast Stone, 34"h  
19th Century.



**NO. 26 "FISHER GIRL"**  
Cast Stone, 31"h  
19th Century.



**NO. 902 FISHER BOY & GIRL FOUNTAIN**

Cast Stone, 50"h  
Base 18" X 30"

Umbrella, 30"diameter

Piped with copper and with brass spray head. The umbrella is fiberglass or copper by special order.

Base has concealed access door for recirculating pump. The base has two recesses into which the figures are placed for assembly. They can and should be set in mortar.



**NO. 900 FISHER GIRL UNDER UMBRELLA**

Cast Stone, 42"h

Umbrella, 30"diameter

Piped with copper and with brass spray head. The umbrella is fiberglass or copper by special order.



**NO. 901 FISHER BOY UNDER UMBRELLA**

Cast Stone, 44"h

Umbrella, 30"diameter

Piped with copper and with brass spray head. The umbrella is fiberglass or copper by special order.



**NO. 45 STONE GARDEN FIGURES**

Cast Stone

44" h. Base is 22" diameter

A beautifully sculpted nostalgic piece of 19th Century American Art.

May be piped with spray nozzle.



**NO. 47 STONE GARDEN FIGURES WITH FIBERGLASS OR COPPER UMBRELLA**

Cast Stone

Figure size 44" h. 22" diameter base

The umbrella is made of either Fiberglass or Copper with spray coming out of the top. It measures 31" diameter and adds 11" to the height, making a total of 55" high.



*Example of Umbrella in Copper*



**NO. 970 BOY WITH RABBIT**

Cast Stone, 25" h

Base 17" X 11"



**NO. 1038 CUPID ON BALL  
WITH BATON**  
Cast Stone, 39"h  
Base 13 3/4" X 13 3/4"



**NO. 1039 CUPID ON BALL  
WITH HORN**  
Cast Stone, 39"h  
Base 13 3/4" X 13 3/4"



**NO. 1118 FIGURE  
"PAINTER"**  
Cast Stone, 40"h  
Pedestal No. 960 is  
not included.



**NO. 1119 FIGURE  
"MUSICIAN"**  
Cast Stone, 40"h  
Pedestal No. 960 is  
not included.



**NO. 1120 FIGURE  
"DESIGNER"**  
Cast Stone, 40"h  
Pedestal No. 960 is  
not included.



**NO. 1121 FIGURE  
"CRAFTSMAN"**  
Cast Stone, 40"h  
Pedestal No. 960 is  
not included.

# STATUARY



**NO. 1105 SEATED SEASON  
"SUMMER"**

Cast Stone, 29"h  
Pedestal No. 1347 is not  
included.



**NO. 1106 SEATED SEASON  
"AUTUMN"**

Cast Stone, 29"h  
Pedestal No. 1347 is  
not included.



**NO. 1107 SEATED SEASON  
"WINTER"**

Cast Stone, 29" 1/2h  
Pedestal No. 1347 is not included.



**NO. 1043 CUPID ON BALL  
WITH FRUIT**

Cast Stone, 39"h  
Base 13 3/4" X 13 3/4"



**NO. 1035 CUPID ON BALL WITH  
TAMBOURINE**

Cast Stone, 39"h  
Base 13 3/4" X 13 3/4"



**NO. 2211 SEATED CUPID**

Lead, 31"h  
Cast Stone ball and  
pedestal not included.  
Available in Bronze.



**NO. 2212 SEATED CUPID**

Lead, 31"h  
Cast Stone ball and  
pedestal not included.  
Available in Bronze.



“HORN”

2003D

**NO. 2003 PAN MUSICIANS (EACH)**

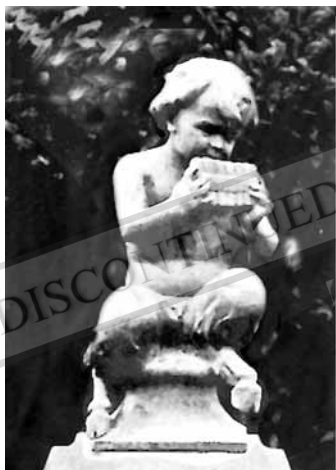
Lead, 26" h

Set of four satyr musicians from English models. They are very much admired by collectors of this material. They should be used on stone pedestals.

Available in Bronze.



“TAMBOURINE”



“PIPES”



“CYMBAL”



**NO. 2023 MERMAID WITH FISH**

Lead, 30" h

Can be piped.

Available in Bronze.



**NO. 2022 MERMAN WITH HORN**

Lead, 25" h

Can be piped.

Available in Bronze.

Base 10 1/2" x 8", Base to head 21 1/4" H, 25" H overall

# STATUARY



NO. 1068 (REAR VIEW)

NO. 1068 HELMETED FIGURE  
(FRONT VIEW)

Cast Stone, 48" h  
Base 12" X 12"

This beautiful figure was carved on private commission by an associate sculptor of Carl Milles for Kenneth Lynch.



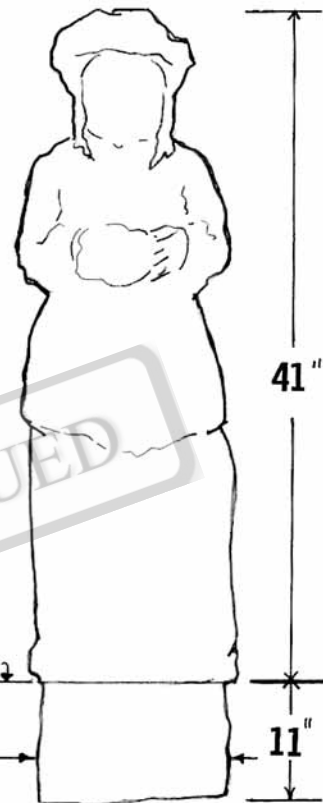
NO. 695A CHILD FIGURE

Cast Stone, 14 3/4" h  
7" diameter base.



NO. 62 COLONIAL FIGURE

Cast Stone  
22" h, Base 9 1/2" X 8"



NO. 1976 LITTLE PURITAN FIGURE

Cast Stone, 41" h  
Plus an additional 11" below grade and 12" diameter.  
The additional 11" is optional. See detail drawing above.



**NO. 2283 CHILD WITH DUCKS**  
Lead, 32"h  
Pedestal No. 24 is not included.  
Available in Bronze.



**NO. 2284 CHILD WITH STARFISH**  
Lead, 32"h  
Many variations of this figure can be used. Frogs may be substituted for the starfish.  
Pedestal No. 24 is not included.  
Available in Bronze.



**NO. 2103 DANCING GIRL ON BASE WITH TWO FROGS**  
Lead, 22"h  
Available in Bronze.



**NO. 2444 DANCING BOY**  
Lead, 23"h  
Available in Bronze.



**NO. 2445 DANCING GIRL**  
Lead, 23"h  
Available in Bronze.

**NO. 2103A DANCING BOY ON BASE WITH TWO FROGS**  
Lead, 22"h  
Available in Bronze.



# STATUARY

## NO. 2460A BOY WITH FROG

Cast Stone

Available in two sizes:  
20" h or 36" h

Lead frog projects water away  
from figure.  
Available in Lead or Bronze.



## NO. 2460 BOY WITH FROG

Cast Stone

Available in two sizes:  
20" h or 36" h

Frog projects water towards figure.  
Available in Lead or Bronze.



## NO. 903 DANCING GIRL FOUNTAIN

Lead, 35" h X 23 diameter  
Should be used in pool.  
Available in Bronze.



## NO. 896 DANCING GIRL FIGURE WITH SHELL AND BIRD

Lead, 38" h

Piped in copper with  
two water jets at hinge  
of shell.

Available in Bronze.





**NO. 2219 MERCURY"**

Lead, 48"h

The original came from Dr. Lister's garden in England.  
Available in Bronze.



**NO. 2451A "LOVE THE PEDDLER"  
WITH HEART & BELL**

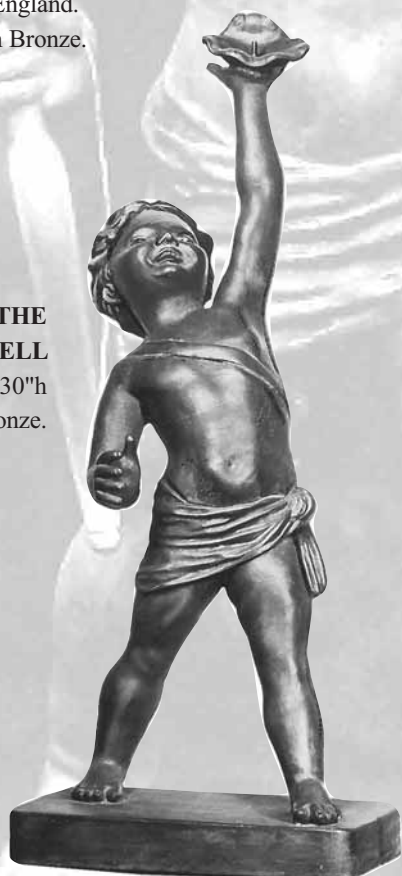
Lead, 30"h

Available in Bronze.

**NO. 2451 "LOVE THE  
PEDDLER" WITH SHELL**

Lead, 30"h

Available in Bronze.



**NO. 2452 "LOVE THE PEDDLER"  
WITH HEART & BOW**

Lead, 30"h

Available in Bronze.

# STATUARY

## NO. 4869 "GARDEN GIRL WITH OWL"

Lead  
Using figure No. 4894, 55"h, No. 1284 tree stump and owl No. 4661.  
Available in Bronze.



## NO. 4870 "GARDEN GIRL WITH DOG"

Lead  
Using figure No. 4894, 55"h, and base with dog holding basket No. 272. Basket is cast stone with stainless steel handle.  
Available in Bronze.



## NO. 4871 "GARDEN GIRL WITH BUCKETS" FOUNTAIN

Lead  
Using figure No. 4894, 55"h, base is 16" X 18" X 4"h, the buckets can be piped for water to flow. The pool is lead and should be 48"w with a 20" projection. The bird is No. 2258.  
Available in Bronze.



## NO. 4894 "GARDEN GIRL"

Lead, 55"h.

The detail of this figure is excellent right down to the stitches on the garment. It can stand individually in the garden as shown or as the illustrations on this page. This classic piece of sculpture could only be produced by an inspired artist.  
Available in Bronze.



## NO. 4879 "GARDEN GIRL" ILLUSTRATION

Lead  
Using figure No. 4894, 55"h, with piped buckets.  
Available in Bronze.



## NO. 4872 "GARDEN GIRL" FOUNTAIN

Lead  
Using figure No. 4894, 55"h, with birdbath No. 2102 & pedestal with pool No. 19. Required space is at least 72"w X 48"l.  
Available in Bronze.



## NO. 4881 "GARDEN GIRL WITH BUCKETS" FOUNTAIN

Lead  
Using figure No. 4894, 55"h and shell No. 1001, 60"w with a 30" projection. Any base can be used to suit the situation.  
Available in Bronze.

## NO. 4873 "GARDEN GIRL" WITH BIRDBATH

Lead.  
Using figure No. 4894, 55"h and birdbath No. 1231.  
Available in Bronze.



## NO. 4875 "GARDEN GIRL" FOUNTAIN

Lead  
Using figure No. 4894, 55"h, with lead border No. 1503, 4' diameter.  
Available in Bronze.



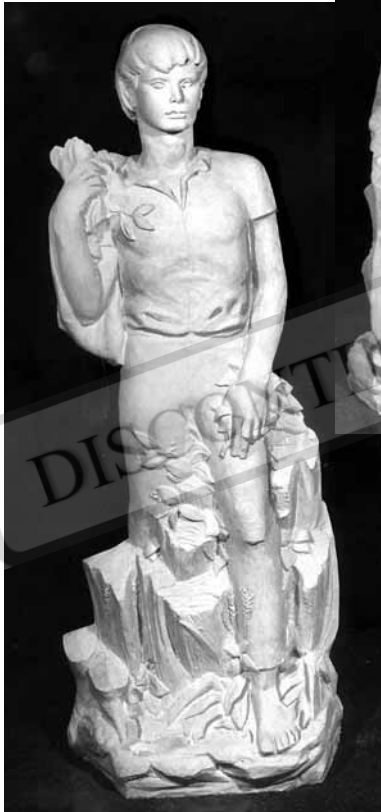
**NO. 6089 YOUNG GIRL WITH BOY**

Cast Stone, 40"h

Base 16" X16" X 1 3/4"h

The artist, Geraldine Lewis - Amendola was inspired by a young girl with a little boy in her charge.

Available in Lead or Bronze.



**NO. 5561 "THE YOUNGLING"**

Cast Stone, 56"h

Base 17" X 19"

This is an original work of art by Robert Amendola. The figure of the youth is intended to portray young America from the period of about 1790. The device he is holding in his right hand could either be a bag of seed if he was a farmer or a jacket if he were a sailor. In his left hand he could either be as shown or he could be holding an axe or a coil of rope or some other device indicating his occupation.



**NO. 5561A "THE YOUNGLING" WITH LEAD SAPLING**

Cast Stone, 56"h

Base 17" X 19"

This another version of the "Youngling". In this version there is a sapling as part of the figure. Likewise, other implements and devices can be substituted.

# STATUARY

**NO. 124 BOY HOLDING FISH**  
Cast Stone, 21”h



**NO. 125 CHILD ON DOLPHIN HEAD**  
Cast Stone  
22”h, Base 9” X 10”



**NO. 198 BOY WITH SHELL ON TURTLE**  
Cast Stone  
30”h X 18”w 16”l

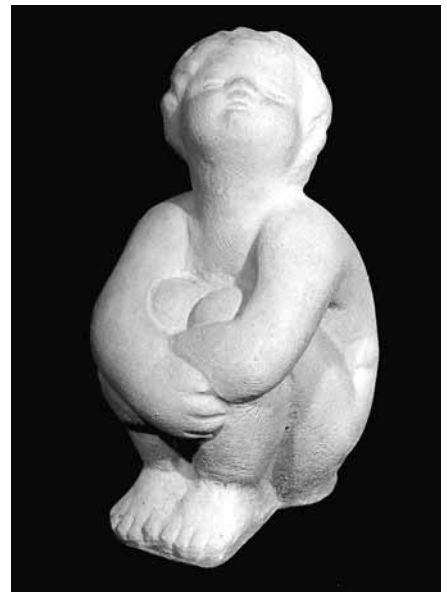


**NO. 1772 CHERUB RIDING DOLPHIN**  
Cast Stone  
21 1/2”h X 13 1/2”w,  
8 1/2” front to back  
Can be piped.



**NO. 233 SITTING CHILD**  
Cast Stone  
10”h

**NO. 234 SITTING CHILD**  
Cast Stone  
10”h





**NO. 4895 "THE LITTLE THINKER" FIGURE**

Cast Stone

20"h

Base 11" X 10"

This delightful figure of a child in a pensive mood is the work of Geraldine Lewis - Amendola. Available in Lead or Bronze.



**NO. 4929 CHILD CONTEMPLATING**

Cast Stone

Available in two sizes:

10 1/2"h X 15"l X 6 1/2"w

22 1/2"h X 34"l X 17"w

In the proper setting in the garden or at a pool edge this is an attractive piece of sculpture by Geraldine Lewis - Amendola.



**NO. 4928 CHILD WITH BABY**

Cast Stone

Available in two sizes:

17"h, Base 13" X 10"

31 1/2"h, Base 23" X 21"

A fine piece of original work by Geraldine Lewis - Amendola.



**NO. 5565 "THE SHOW OFF"**

Cast Stone, 25"h

Base 17" X 13" Oval

This delightful piece of sculpture, by Geraldine Lewis - Amendola, shows a child showing off what he can do with his feet in the air balancing on his back. There was just such a boy who continuously entertained his neighbors with his upside down pose balancing balls, planters, etc. We photographed him many times and finally decided it would make an excellent piece of sculpture. Almost anything could be supported by this boy.



**NO. 4976 SEATED CHILD**

Cast Stone

16 1/2"h X 15"l

An original work by Geraldine Lewis - Amendola.

# STATUARY



**NO. 213 PIXIE**  
Cast Stone  
22"h



**NO. 214 PIXIE**  
Cast Stone  
21 1/4"h



**NO. 212 PIXIE**  
Cast Stone  
21"h

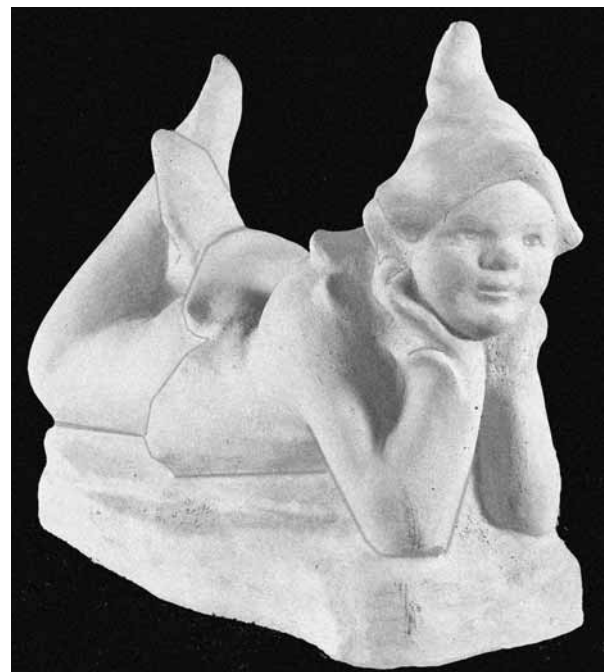


**NO. 4854 GARDEN COMPOSITION WITH  
NO. 2206 FIGURE**

Lead, 72" w X 36" projection.

The figure, No. 2206 is 43" h, pedestal No. 507 is Cast Stone and is 18" h, the garden border edging No. 1503 is 6" h.

Available in Bronze.



**NO. 215 PIXIE**  
Cast Stone  
17"h



**NO. 4930 GIRL WITH APRON**

Cast Stone, 46" h  
Apron 16" Across  
Base 15" X 14"

This delightful piece of sculpture may be used as a birdbath, planter or a holder. This piece was created by Geraldine Lewis-Amendola in 1973.



**NO. 103 BOY WITH WHEAT**

Cast Stone  
35" h, Base 10" X 10"



**NO. 972 OTTER GIRL  
(IN LEAD)**

Available in two sizes:  
25" h or 41 1/2" h.

25" H figure has 6 1/2" x 5 1/2" base

**NO. 972 OTTER GIRL**

Cast Stone

Available in two sizes: 25" h or 41 1/2" h

Water spills from the shells held in the little girl's hand and her friend, the otter, is enjoying the waterfall. This wonderfully charming piece of sculpture is very desirable in the garden on a small pedestal or by itself, but even more desirable as a fountain piece.

Available in Lead or Bronze.



# STATUARY



**NO. 680D ANGEL**

Lead  
14 1/4"l  
Available in Bronze.



**NO. 680C ANGEL**

Lead  
14 1/4"h  
Available in Bronze.



**NO. 680E ANGEL**

Lead  
15 1/4"h  
Available in Bronze.



**NO. 680A ANGEL**

Lead, 14 1/2"h  
Available in Bronze.

**NO. 680B ANGEL**

Lead, 15 3/4"h  
Available in Bronze.





**NO. 766 ANGEL WITH CANDLESTICK**  
Cast Stone, 37"h  
Base 6" X 9"



**NO. 804 LISTENING ANGEL  
FRAGMENT**

Cast Stone  
11 1/2"h X 8 1/2"w X 5"d  
Has a flat back suitable for hanging.



**NO. 803 LISTENING ANGEL**  
Cast Stone  
31"h X 12"w X 12"d



**NO. 805 ANGEL BRACKET  
WITH LUTE**  
Cast Stone  
17"h X 8"w X 5"d



**NO. 699 TRUMPETING  
ANGEL**

Cast Stone, 20 1/2"h  
This is an excellent and most appealing  
piece of sculpture.  
Pedestal No. 767 is not included.



**NO. 805A ANGEL BRACKET  
WITH TRUMPET**  
Cast Stone  
17"h X 8"w X 5"d

# STATUARY



**NO. 11 CHILD WITH  
FRUIT BASKET**

Cast Stone  
20"h, Base 7" X 7"



**NO. 10 CHILD WITH  
GRAPES**

Cast Stone, 20"h  
Base 7" X 7"



**NO. 156 BOY HOLDING FISH**

Cast Stone, 18"h



**NO. 1265 "WINTER"  
FIGURE**

Cast Stone, 20"h  
6 1/2" base



**NO. 1263 "SUMMER"  
FIGURE**

Cast Stone, 20"h  
6 1/2" base



**NO. 75 BOY RIDING DOLPHIN**

Cast Stone  
38"h, Base 14 1/4" X 14 1/4"  
May be piped with large pipe.



**NO. 287 BOY HOLDING FISH**

Cast Stone, 37"h  
Base 10" X 10"



**NO. 308 BOY PLAYING PIPES HOLDING FROG**

Cast Stone, 38"h  
Base 10" X 10"



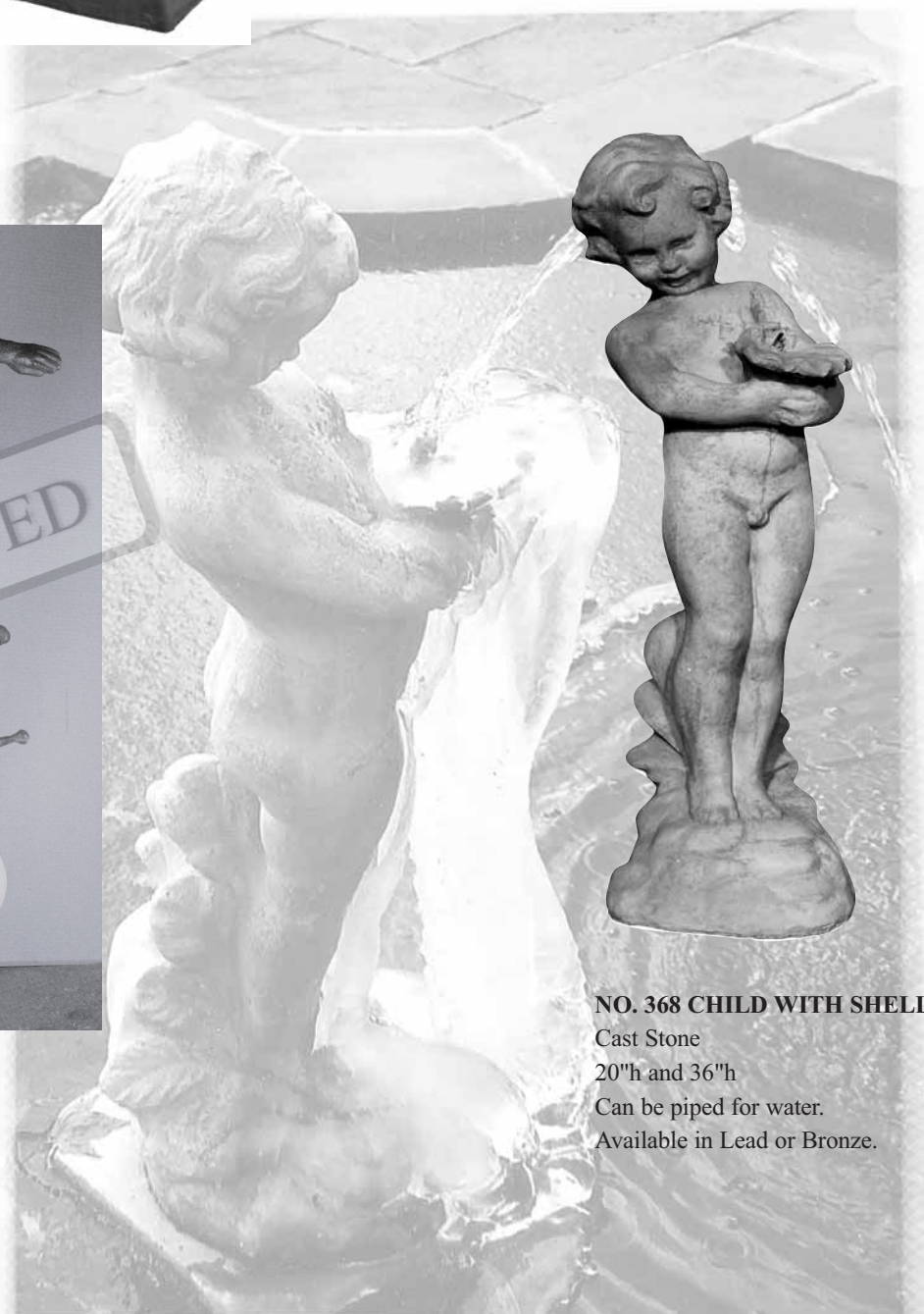
**NO. 309 BOY HOLDING GRAPES**

Cast Stone, 40"h  
Base 10" X 10"



**NO. 642 BOY DANCING ON SNAIL**  
42"h X 30"l

The snail may be furnished in Cast Stone with the figure in Lead.  
Available in Lead or Bronze.



**NO. 368 CHILD WITH SHELL**

Cast Stone  
20"h and 36"h  
Can be piped for water.  
Available in Lead or Bronze.



**NO. 23 SITTING CHILD WITH SHELL**

Cast Stone  
13"h  
Base 5" X 6"



**NO. 889 CHILD WITH SHELL**

Cast Stone, 36"h  
Base ~~13" diameter~~ 13"-14" dia, 20" proj  
Excellent fountain piece, piped.



**NO. 269 CHILDREN HOLDING FISH**

Cast Stone, 41"h  
Base 12 1/2" X 12 1/2"



**NO. 248 "BELGIAN BOY"**

Cast Stone, 25"h  
Base 6 1/2" X 6 1/2"

May be piped.  
Also available in Lead or Bronze.



The figure No. 248 is a reproduction of the famous Belgian Boy one block from the Grand Hotel in the heart of Brussels . As the story of the Belgian Boy goes, this little child was the son of the town mayor and was lost for three days. The entire town turned out to search for him with no success in finding him. At the end of the third day, the

little boy was discovered standing on the exact street corner, wearing no clothes, and doing what he is appearing to do. The townspeople were so overjoyed that the child was found, they commissioned Belgium's finest sculptor to model the child exactly as he was found. Thus creating this famous fountain.



**NO. 230 BOY WITH GOOSE**  
Cast Stone, 22"h  
Can be piped.



**NO. 1067 CHILD WITH BIRDS**  
Cast Stone, 32"h  
Pedestal No. 3550 is not included.



**NO. 1282 BOY WITH LUTE**  
Cast Stone, 32"h  
Base 9" X 9"



**NO.1313 SEATED GARDEN CHILD (FACING LEFT)**  
Cast Stone, 12"h  
Base 8" X 6"  
English origin.



**NO. 1314 SEATED GARDEN CHILD (FACING RIGHT)**  
Cast Stone, 12"h  
Base 8" X 6"  
English origin.



**NO. 1757 BOY HOLDING DOLPHIN**  
Cast Stone, 40"h  
Base 12" X 12"  
Also available in lead



**NO. 963 CHILDREN  
HOLDING SHELL**

Cast Stone, 26" h  
Can be used as birdbath,  
feeder or fountain. Lead bird  
included.  
14" x 12" oval base



**NO. 964 "GAZER" FIGURE**

Cast Stone  
15 1/2" h  
Lead bird included.  
10 1/2" x 7"



**NO. 965 BOY ON FISH**

Cast Stone  
20" h X 21" l  
By sculptor Anne Kopper.  
Can be piped.



**NO. 967 BIRD WARMER**

Cast Stone  
14" h  
Lead bird included.



**NO. 968 BIRD HOLDER**

Cast Stone  
14" h  
Lead bird included.  
6 1/2" back to front, 4  
1/4" side to side



**NO. 969 YOUNG ST. FRANCIS**

Cast Stone  
23" h  
Lead bird included.



**NO. 1115 SENSE  
"HEARING"**  
Cast Stone, 40"h  
Pestal not included.



**NO. 1114A SENSE  
"SMELL"**  
Cast Stone, 40"h  
Pestal not included.



**NO. 1114 SENSE  
"SIGHT"**  
Cast Stone, 40"h  
Pestal not included.



**NO. 1774 CHERUBS  
POURING WATER**

Cast Stone, 35"h  
Base 18" X 18"

These two boys are playing with a jug of water. One spilling into the other one's shell which in turn spills into the pool below.



**NO. 2381 CHERUB**  
Cast Stone, 40"h  
Base 15" Round  
Wt. 225lbs. Facing left, can be wired for lights or piped for water.



**NO. 2382 CHERUB**  
Cast Stone, 40"h  
Base 15" Round  
Wt. 225lbs. Facing right, can be wired for lights or piped for water.



**NO. 5508 FIGURE  
WITH GRAPES**  
Cast Stone, 42"h  
This beautifully detailed piece could possibly be called Summer or early Fall.



**NO. 5509 FIGURE  
WITH ACORNS**  
Cast Stone, 42"h  
This beautifully detailed piece could possibly be called Summer or early Fall.

# STATUARY



**NO. 1758 "EMILIO"**  
Cast Stone, 22"h  
Base 7" X 10"



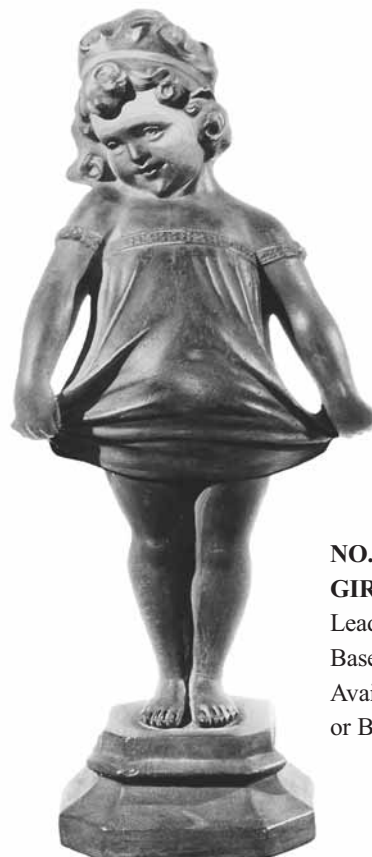
**NO. 252 "ARMORINI"**  
**PLAQUE (LEFT)**  
Cast Stone  
~~24" X 13"~~  
24" x 14"



**NO. 251 "ARMORINI"**  
**PLAQUE (RIGHT)**  
Cast Stone  
~~24" X 13"~~  
24" x 14"



**"ARMORINI"**  
**(NO. 104 LEFT & NO.105 RIGHT)**  
Cast Stone  
22"h X 14"w, Wall Hanging. Antique Reproduction.



**NO. 2455 BASHFUL GIRL**  
Lead, 22"h  
Base 7" X 7"  
Available in Cast Stone or Bronze.





**NO. 2453 PIPING BOY**

Lead, 32"h

Base 7 1/2" X 8" 6 1/2"W x 7 1/2"L

Pipes are lined with copper tubing for connection to water.

Available in Bronze.



**NO. 2450 BOY HOLDING FROG**

Lead, 9"h, Base 10"

Can be piped for fountain.

Available in Bronze.



**NO. 2454 GIRL WITH FROG**

Lead, 16"h

Piped for water.

Available in Bronze.



**NO. 2461 GOOSE BOY**

Lead, 25 1/2"h

Piped for water.

Available in Bronze.



**NO. 2644 GARDEN FIGURE**

Lead, 24"h

Base 6 1/2" X 4"

This piece is from the Truesdale Collection. Piped through mouth. A very fine piece for a small fountain. Available in Bronze.

# STATUARY



**NO. 2132 BOY WITH DOLPHIN**  
Lead, 18"h  
Available in Bronze.



**NO. 2276 BOY WITH FLUTE**  
Lead, 16"h  
Base 16"l X 6"w  
Available in Bronze.



**NO. 2844 FIGURE WITH BIRDS**  
Lead, 20"h  
Appealing primitive feeling.  
Available in Bronze.



**NO. 2448 GIRL RIDING TURTLE**  
Lead, 14"h  
Available in Bronze.



**NO. 2449 BOY RIDING DOLPHIN**  
Lead, 14"h  
Can be piped.  
Available in Bronze.



**NO. 2882 "FROGGY GOES A-WOING"**  
Lead, 20"h  
Base 10 1/2" X 10 1/2"  
Available in Bronze.



**NO. 2411 SEATED CHILD ON LEAD ROCK**  
Lead, 15"h  
Available in Bronze.



**NO. 2412 SEATED CHILD ON BALL BASE**  
Lead, 15"h  
Available in Bronze.



**NO. 2890 CHILD HOLDING BIRD**  
Lead, 22"h  
Available in Bronze.



**NO. 2876 GAZING CHILD KNEELING**  
Lead, 10"h Base 17" x 6"  
Probably looking into water.  
Available in Bronze.



**NO. 2884 "JUDY WITH FLUTE"**  
Lead, 42 1/2"h  
Base 13" X 6"

This is a really great and beautiful piece of sculpture. Water flows from the stops on the flute. Sculpted by Geraldine Lewis - Amendola. Bronze Flute. Available in Bronze. Flute 20 1/2" long, 32"H from base



**NO. 2889 CHILD WITH FLUTES**  
Lead, 14"h  
At widest point 10"  
Available in Bronze.



**NO. 2889A CHILD WITH FLUTES ON STONE BASE**  
Lead, 14"h  
Piped for water.  
Available in Bronze.

# STATUARY



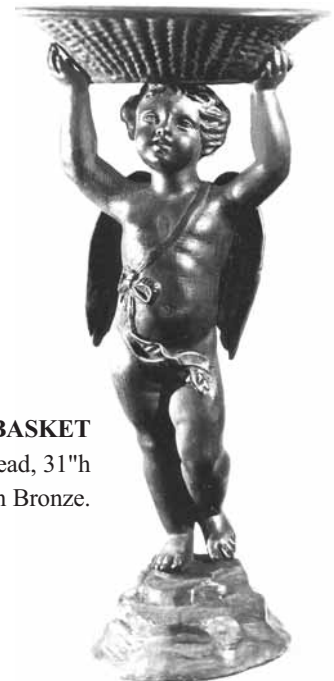
**NO. 2581 LEAD  
VERROCCIO FIGURE  
HOLDING FISH**  
Lead, 15 1/2"h  
Piped.  
Famous small piece by  
Verrocchio.  
Available in Bronze.



**NO. 2822 LEAD BOY ON  
CAST STONE SNAIL**  
Lead, 21 1/2"h  
Snail can be furnished in lead.  
Available in Bronze.



**NO. 2841 CUPID WITH  
BOW & BIRDS**  
Lead, 32"h X 27"l  
Base 17" diameter  
The winged child has a bow  
and there are two birds at  
his feet.  
Available in Bronze.



**NO. 2408 CUPID WITH BASKET**  
Lead, 31"h  
Available in Bronze.



**NO. 2846 BOY RIDING LEAD DOLPHIN**  
Lead  
27"l X 18"h overall  
This dolphin can take a very large pipe. ~~The  
dolphin can be furnished in Cast Stone.~~  
Available in Bronze.



**NO. 2877 "WHISTLING  
BOY"**  
Lead, 14"h  
19th century antique  
reproduction.  
Available in Bronze.



**NO. 2005 ELF FIGURE**  
Lead, 13 1/4"h  
Original from Cong, Ireland.  
Available in Bronze.



**NO. 2252 JOAN OF ARC**

Lead

8 1/2" diameter base and is 2 1/2" h

Approximately 30" h

This beautiful piece of sculpture by Geraldine Lewis - Amendola.

Available in Bronze.

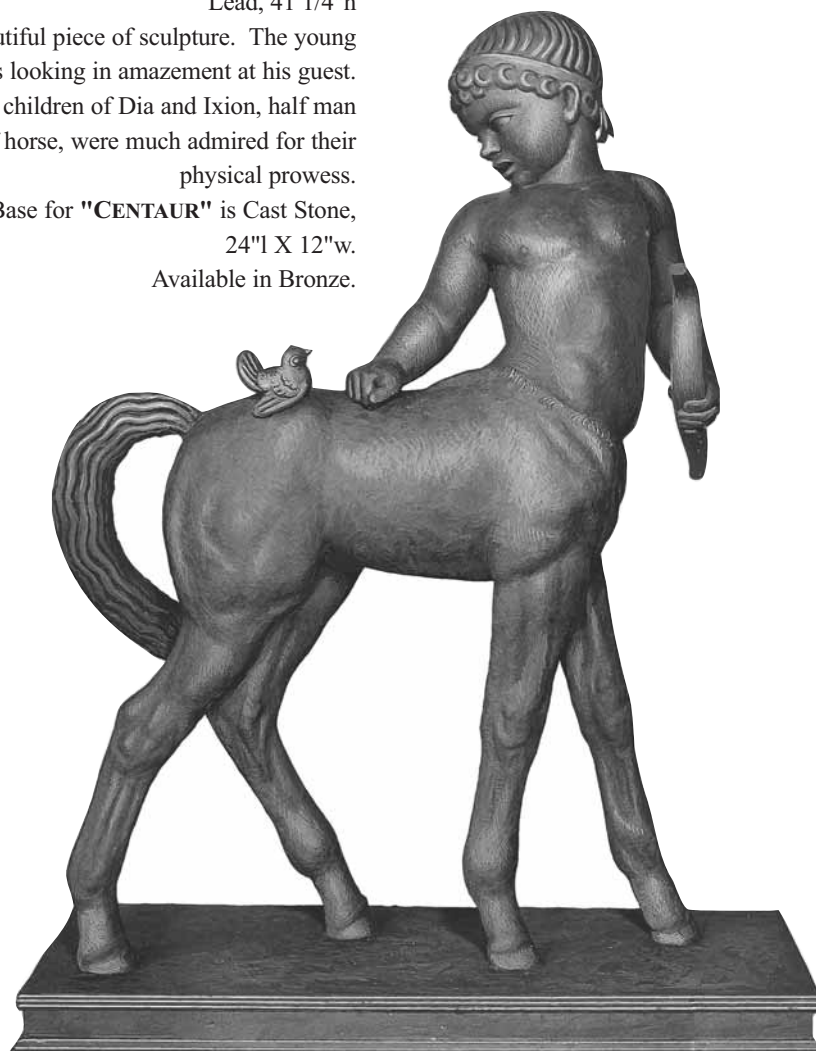
**NO. 1601 "CENTAUR"**

Lead, 41 1/4" h

A most beautiful piece of sculpture. The young Centaur is looking in amazement at his guest. The Centaurs, children of Dia and Ixion, half man and half horse, were much admired for their physical prowess.

Base for "CENTAUR" is Cast Stone, 24" l X 12" w.

Available in Bronze.



**NO. 1679 SEATED CHILD WITH HELMET**

Lead, 20" h

Available in Bronze.



**NO. 5540 CENTAUR**

Bronze

8 1/2" h

This wonderfully modeled, happy looking piece of small sculpture has long been the property of the Craft Center Museum and it is available for reproduction in a limited number of pieces. It is available in Bronze only. It is part of the Lynch collection of Centaur models.



**NO. 4686 BALANCING BOY ON CAST STONE BALL**

Lead/Cast Stone  
40"h

Looks well with four jets of water surrounding it in a pool.



**NO. 2900 CHILD WITH FROG SQUIRTING WATER SITTING ON ROCK**

Lead, 24"h  
Base 9" X 8"

Available in Bronze.



**NO. 4510 "FISHER BOY" FIGURE**

Lead, 20"h  
Available in Bronze.



**NO. 4687 CIRCUS RIDER ON CAST STONE CLYDESDALE**

Lead, 60"h X 42"l  
Available in Bronze.



**NO. 4688 BALANCING BOY**

Lead, 28"h  
Available in Bronze.



**NO. 2442 JUG BOY**

Lead, 20 1/2"h  
This is an authentic and accurate reproduction. It can be used in an arrangement as illustrated with a recirculating pump.  
Available in Cast Stone or Bronze.



**NO. 2208A FIGURES WITHOUT SHELL**

Lead, 25"h  
Available in Bronze.



**NO. 2021 MERMAN FIGURE WITH SHELL**

Lead, 25"h  
May be piped.  
Available in Bronze.



**NO. 1664 BOY WITH TRAY AND JET**

Lead figure 26" h 27 1/2" H  
Available in Bronze.  
14 3/4" bowl dia  
9"-10" base  
30"H w/ birds, 41"H w/ jet



**NO. 1664 BOY WITH TRAY AND JET**

Lead, 41"h  
May be furnished without jet.  
You may also use our dolphin base, 24"h x 26" diameter with a special triform stone pedestal, 12"h, making the entire arrangement 67"h.  
Available separately.  
Available in Bronze.

# STATUARY



**NO. 643 SNAIL WITH LEAD RIDER**

Lead  
 Snail 10"h X 30"l  
 Figure 26"h  
 Snail can be furnished in Cast Stone with figure in Lead. Snail may be purchased separately.  
 Available in Bronze.



**NO. 2038 CHILD DRAPED WITH A SCALLOPED TUNIC & FLUTE**

Lead, 24"h  
 Reproduction from the late 17th century. Can be piped.  
 Available in Bronze.



**NO. 561 BOY ON SEAHORSE**

Lead, 31"h  
 May be piped.  
 Available in Bronze.



**NO. 2061 GIRL WITH SHAWL**

Lead, 36"h  
 Base, 7"W x 8 1/2"L ~~Base 8" X 6" w~~  
 Available in Bronze.



**NO. 1665 BOY WITH VASE**

Lead, 25"h  
 Base 15" diameter  
 Available in Bronze.



**NO 2172 MADONNA FIGURE WITH CHILD**

Lead, 10"h  
 Available in Bronze.  
 2 1/2" sq base





NO. 8  
"ST. FRANCIS"  
Cast Stone, 24"h



NO. 1261 "ST. FRANCIS"  
Cast Stone, 48"h  
This can be used as a bird feeder or as a fountain with water flowing from the shell. Many design compositions could be made using this figure as the central feature on the edge of a pool where birds and animals would drink. This is an exceptional piece of sculpture.

NO. 517  
"ST. FRANCIS"  
Cast Stone  
Three sizes: 26"h,  
40"h and 48"h  
Slight variations occur in  
the different sizes.



NO. 2221 "ST. FRANCIS"  
PLAQUE

Lead  
7 1/2"w X 12"h  
Reverse side is inscribed  
with "The Canticle of the  
Sun".  
Used with No. 2209 Shrine.

*"The Canticle of the Sun"*

*Most high omnipotent Lord, Thine are the praises, the glory, the honor,  
and all benediction.*

*To Thee alone, Most High, do they belong,  
And no one is able to praise You as You deserve.  
Praised be Thou, my Lord, with all Thy creatures,  
Especially the honored Brother Sun,  
Who makes the day and illumines us through Thee.  
And he is beautiful and radiant with great splendor,  
And bears the signification of Thee, Most High One.  
Praised be Thou, my Lord, for Brother Wind,  
And for the air, cloudy and clear and every weather,  
By which Thou givest sustenance to Thy creatures.  
Praised be Thou, my Lord, for Sister Water.  
Which is very useful and humble and precious and chaste.  
Praised be Thou, my Lord, for Brother Fire,  
By whom Thou lightest the night,  
And he is beautiful and jocund and robust and strong.  
Praised be Thou, my Lord, for our sister Mother Earth,  
Who sustains and governs us,  
And produces various fruits with colored flowers and herbage.  
Praise and bless my Lord and give Him thanks  
And serve Him with great humility.  
Praised be Thou, O'Lord, for those who give pardon for Thy Love  
And endure infirmity and tribulation.  
Blessed be Thou, who endure in peace, who will be,  
Most High, crowned by Thee!  
I pray to Thee in thanksgiving for the tranquility of the garden  
And all the wondrous things of nature.*



NO. 2209 "ST. FRANCIS"  
SHRINE/BIRDFEEDER  
(FRONT & BACK PANELS)

Needs to be hung to  
see both sides

Lead  
16"h X 12"w

# STATUARY



**NO. 2441 "ST. FRANCIS"**  
Lead  
19"h, 7"base  
Available in Bronze.



**NO. 39 "ST. FRANCIS"**  
Cast Stone, 17 1/4"h

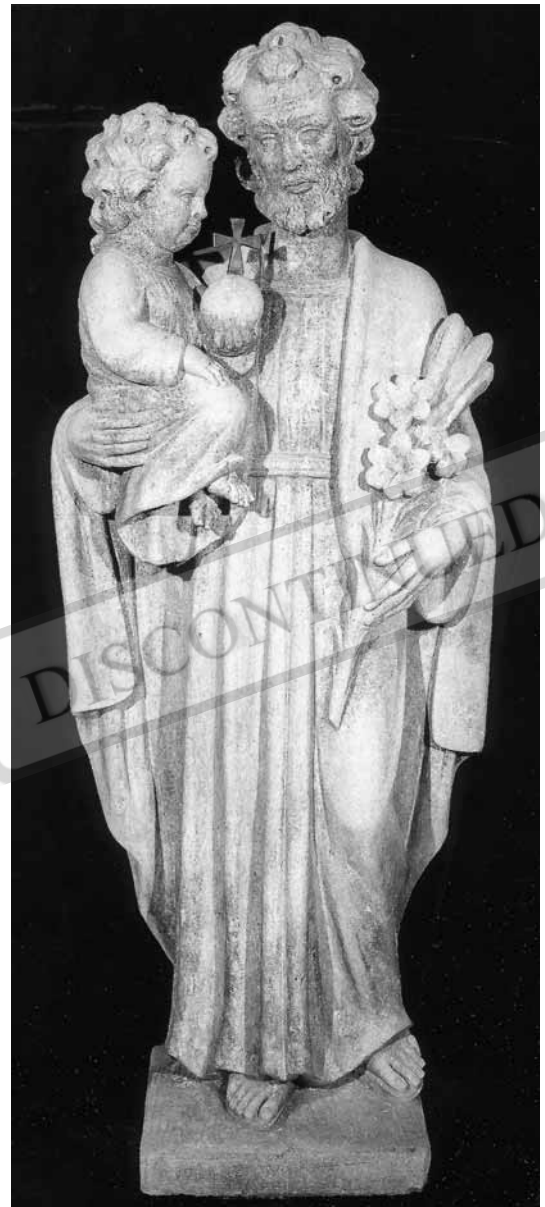


**NO. 132 "ST. FRANCIS"**  
Cast Stone, 13 1/2"h  
**NO. 137 "ST. FRANCIS"**  
Cast Stone, 18"h

**NO. 118 "ST. FRANCIS"**  
Cast Stone, 30"h  
Base is 7" X 7"



**NO. 1717 "ST. ANTHONY"**  
**FIGURE**  
Cast Stone, 36"h  
Base 10" octagonal



**NO. 1279 "ST. JOSEPH"**  
Cast Stone, 53"h  
Base is 14" X 14"



**NO. 190 "ST. FIACRE"**  
Cast Stone, 32"h  
Base 8" X 10"  
An older version by George Mitchell.



**NO. 560 "ST. FIACRE"**  
Cast Stone, 19"h  
Available in Lead or Bronze.



**NO. 191 "ST. FIACRE"**  
Cast Stone, 31" h  
Base 8" X 10"  
A young version by George Mitchell.



**NO. 1136 "ST. FIACRE",  
THE VENERABLE**  
Cast Stone, 48"h  
Base is 13" X 13"



**NO. 290 "MADONNA"**  
Cast Stone, 40"h  
Base is 13" X 13"



**NO. 1138 "MADONNA" FIGURE**  
Cast Stone, 32"h  
Base 11" X 11"  
Pedestal not included



**NO. 2893 "MADONNA" FIGURE**  
Lead, 30"h, base 7 1/4"  
From European collection.  
Available in Bronze.

# ORIENTAL STATUARY



**NO. 1431 CAMBODIAN TEMPLE FIGURE**

Cast Stone, 28"h  
10" X 5" oval base



**NO. 529 BUDDHA**  
Cast Stone, 18"h



**NO. 544 QUAN YIN**  
Cast Stone, 24"h



**NO. 706 SEATED QUAN WITH PEDESTAL**

Cast Stone  
42"h X 24"w X 18"d  
550 lbs



**NO. 786 SEATED BUDDHA** \*\*Figure only\*\*

Cast Stone, 43 1/2"h  
~~Base 14 1/2"h X 21"w X 13 1/2"d~~  
Base No. 718 may or may not be used  
and can be purchased separately.



**NO. 539 BUDDHA**  
Cast Stone, 21 1/2"h



**NO. 718 BASE**

Cast Stone  
14 1/2"h X 21"w X 13 1/2"d



**NO. 545 QUAN YIN**  
Cast Stone  
Available in two sizes:  
40"h & 53"h



**NO. 715 QUAN YIN**  
Cast Stone, 30"h  
Can be used with or without Lotus base.  
Quan Yin may be wall mounted if desired.



**NO. 547 QUAN YIN**  
Cast Stone, 34"h



**NO. 546 QUAN YIN**  
Cast Stone, 42"



**NO. 702 GODDESS OF LOVE**  
Cast Stone  
58"h X 15"w X 10 1/2"d



**NO. 713 QUAN YIN WITH LOTUS PEDESTAL**  
Cast Stone  
54 1/2"h X 12"w X 10"d  
Base 8 1/2"W x 10 1/2"L

# ORIENTAL STATUARY



**NO. 707 BUDDHA**  
Cast Stone, 56"h  
Base 12" X 11"



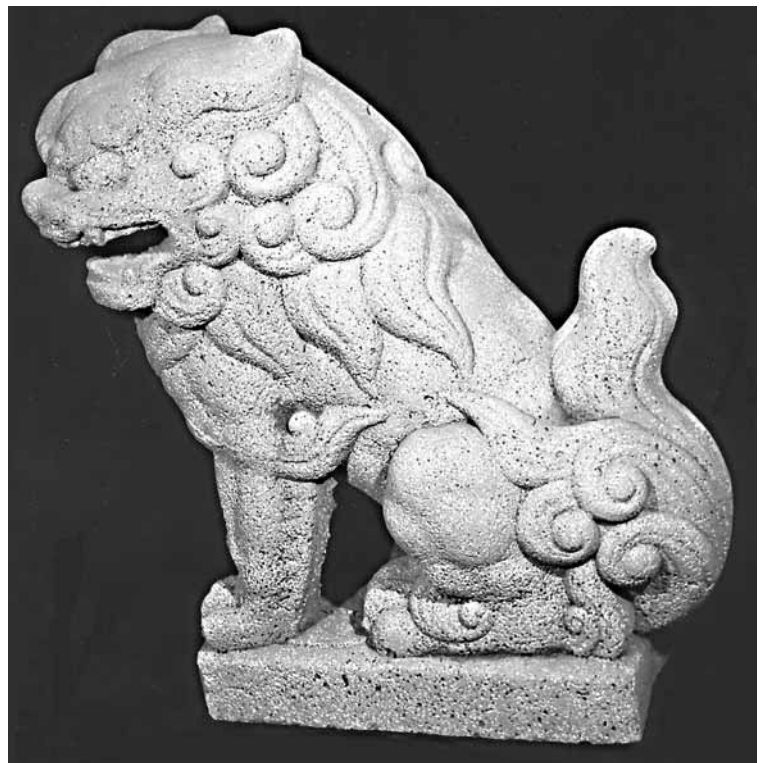
**NO.714 LOTUS  
PEDESTAL**  
Cast Stone  
15"h X 12"w X 10"d  
Base 10 1/2"L x 8 1/2"W



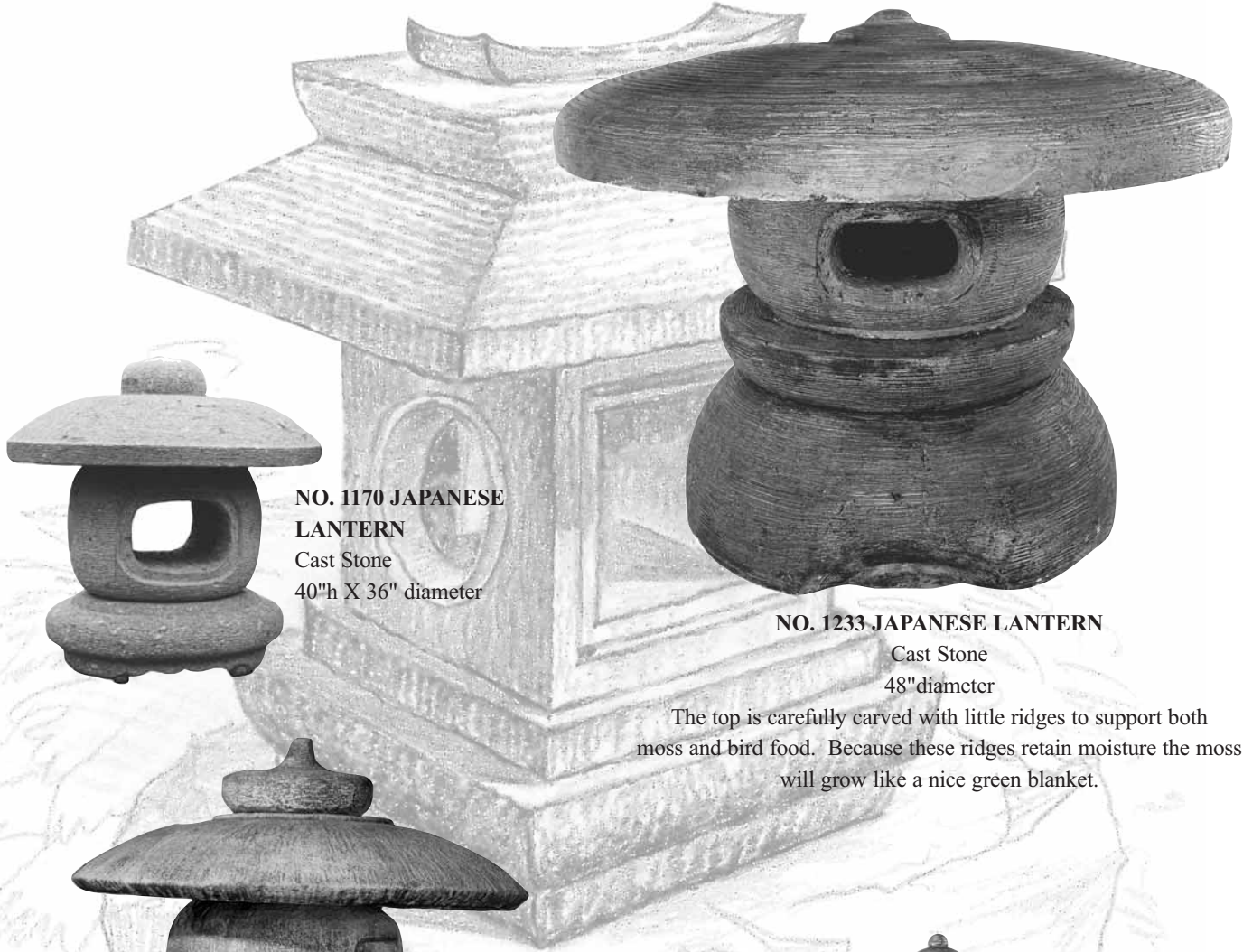
**NO. 700 GODDESS OF  
FLOWERS**  
Cast Stone, 54"h  
Base 14"h  
Can be furnished with or  
without No. 710 pedestal.



**NO. 1709 FOO DOG**  
Cast Stone, 23"h  
Base 11" X 22"



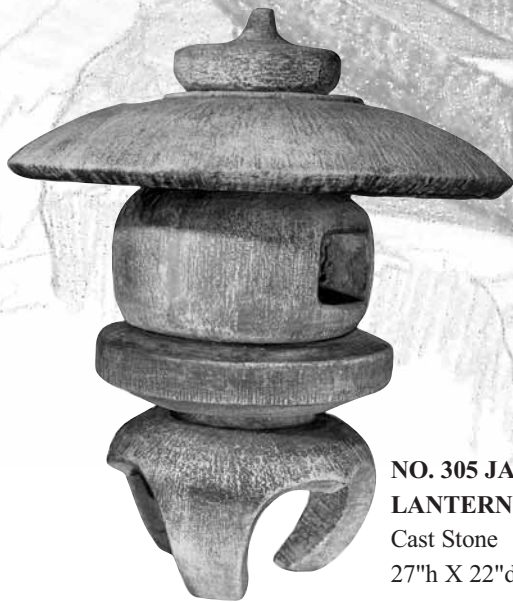
**NO. 1349 FOO DOG**  
Cast Stone  
Available in two sizes:  
14"h, Base 8" x 4 1/2"  
24"h, Base 16" x 9" x 2 1/2"h  
Available facing right or left.



**NO. 1170 JAPANESE LANTERN**  
Cast Stone  
40"h X 36" diameter

**NO. 1233 JAPANESE LANTERN**  
Cast Stone  
48" diameter

The top is carefully carved with little ridges to support both moss and bird food. Because these ridges retain moisture the moss will grow like a nice green blanket.



**NO. 305 JAPANESE LANTERN**  
Cast Stone  
27"h X 22"diameter



**NO. 1232 JAPANESE LANTERN**  
Cast Stone, 48"square  
The top of this lantern was designed to retain water, moss and bird food.  
Any base can be used.



**NO. 1171 JAPANESE LANTERN/  
BIRDFEEDER**  
Cast Stone  
30"l X 18"h

# ORIENTAL LANTERNS



## NO. 293-296 JAPANESE LANTERN

Cast Stone

Sizes available:

- #293 - 30"h X 25"diameter
- #294 - 25"h X 19"diameter
- #295 - 18"h X 15"diameter
- #296 - 14"h X 12"diameter



## NO. 298-301 JAPANESE LANTERN

Cast Stone

Sizes available:

- #298 - 26"h X 26"diameter
- #300 - 19"h X 16"diameter
- #301 - 15"h X 12 1/2"diameter



## NO. 532 JAPANESE RANKEI LANTERN

Cast Stone

18" X 36"

Lid - 24" dia x 4 1/2"H

Lantern - 10 1/2" dia

Base of Lantern - 14 1/2" dia

Base & Lantern 8 1/2" high overall



## NO. 1172 JAPANESE LANTERN

Cast Stone

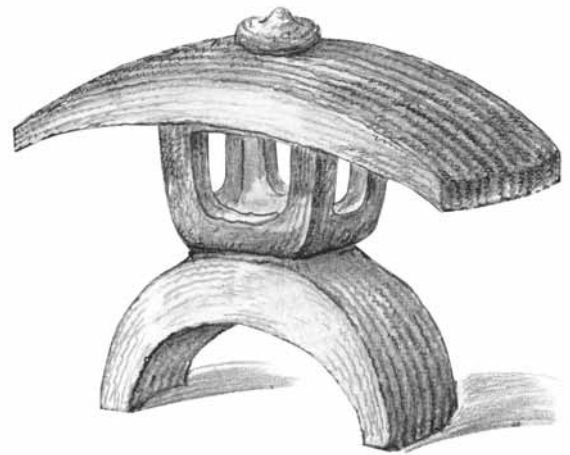
18"h X 10 1/2"w





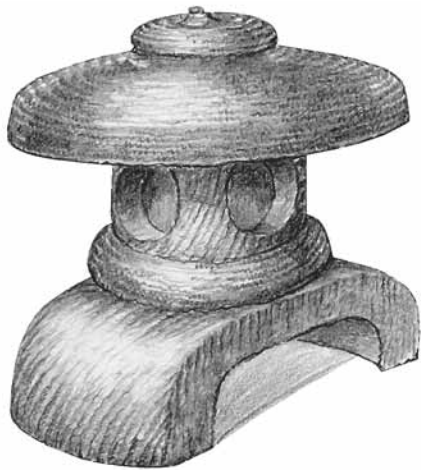
**NO. 5246 JAPANESE LANTERN**

Cast Stone, 26"h  
Base 13" X 13"



**NO. 5245 JAPANESE LANTERN**

Cast Stone  
14"h X 18" X 8"top



**NO. 5237 JAPANESE LANTERN**

Cast Stone  
14"h X 18" across base



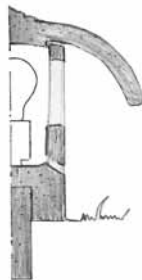
**NO. 5243 JAPANESE LANTERN**

Cast Stone  
10"h X 18" diameter  
Base No. 92 10" X 10" X 10"



**NO. 5239 JAPANESE LANTERN**

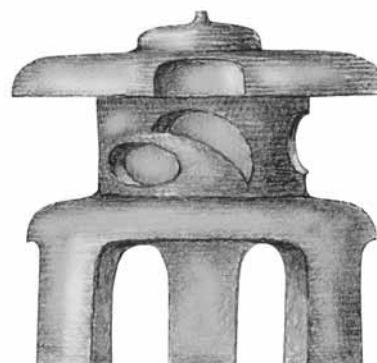
Cast Stone  
10"h X 18" diameter



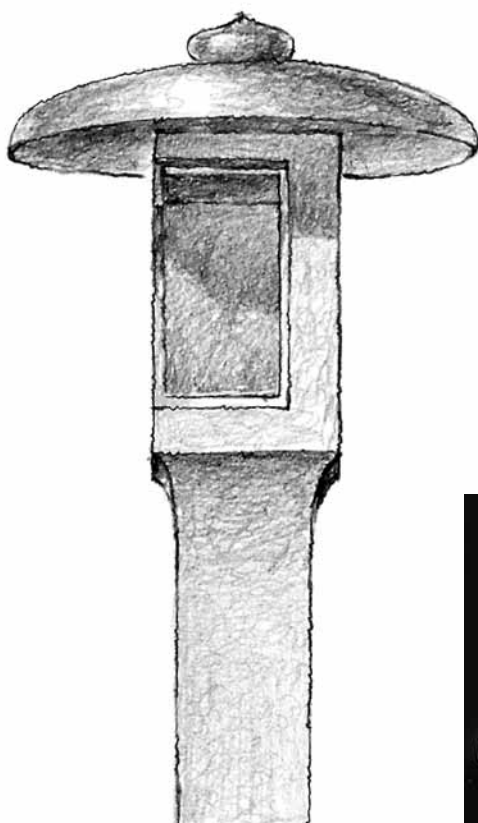
# ORIENTAL LANTERNS



**NO. 5241 JAPANESE  
LANTERN**  
Cast Stone  
15"h X 18" diameter top



**NO. 1173 JAPANESE "SODE GATA"  
LANTERN**  
Cast Stone  
36"h X 30"w



**NO. 1287 JAPANESE  
LANTERN, BIRDFEEDER  
AND SHELTER**  
Cast Stone  
48"h and is 25" diameter



**NO. 538 JAPANESE  
LANTERN**  
Cast Stone, 50"h

**NO. 543 JAPANESE  
LANTERN**  
Cast Stone, 23"h  
Can be used with only the top  
and first section if preferred.





**NO. 724A PAGODA**  
Cast Stone  
67"h X 19"w X 19"d  
Base 13" X 13"

**NO. 1178 JAPANESE LANTERN**  
Cast Stone, 60"h  
Base 14 1/2" X 14 1/2"



**NO. 704 FRET URN**  
Cast Stone  
16"h X 16"w X 16"d



**NO. 304 JAPANESE LANTERN**  
Cast Stone, 38"h



**NO. 701 ORIENTAL TEMPLE URN**  
Cast Stone  
15 1/2"h X 28"w X 13"d

# ORIENTAL LANTERNS



**NO. 1177 JAPANESE BIRDFEEDER**  
Cast Stone  
60"h X 24" square base



**NO. 535 JAPANESE BOWL**  
Cast Stone  
Available in two sizes: 17" and 24"  
diameter.



**NO. 1174 JAPANESE WATER  
BASIN**  
Cast Stone  
24"h X 21"diameter



*No.529 Buddha statue in setting at Rock Hill Economic  
Development, Rock Hill, South Carolina*