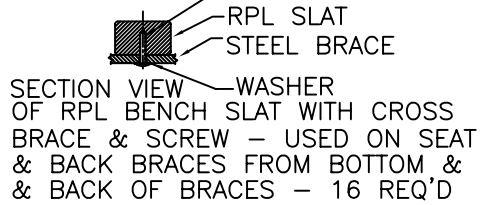
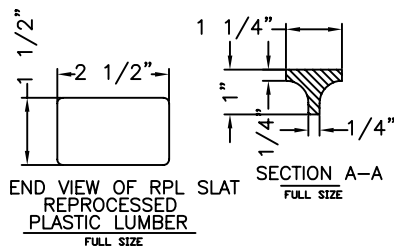
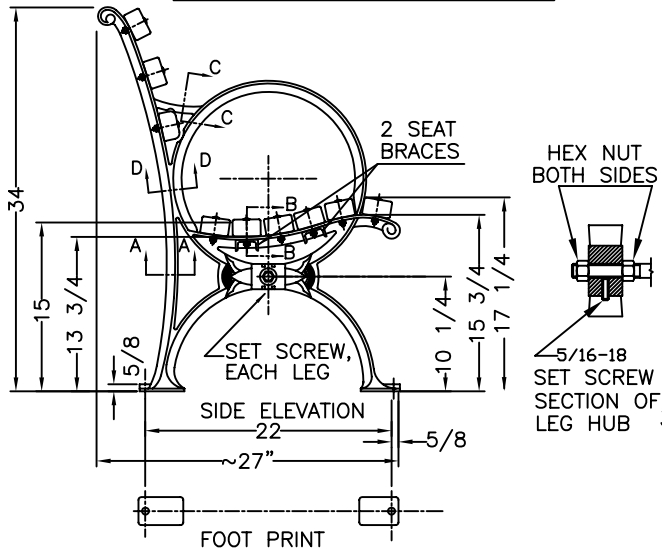


RPL IS HELD TO THE BRACES BY TAPERED SCREWS WHICH ARE DRIVEN INTO THE RPL FROM THE BACK AND BOTTOM AND ARE NOT VISIBLE FROM ABOVE. McMASTER #95638A317 PIN-IN-TORX TAMPER RESIST SHEET METAL SCREW 18-8 STAINLESS STEEL, BUTTON HEAD, NO 14 SIZE, 1-1/2" LENGTH NOT VISIBLE FROM FRONT OF BENCH.

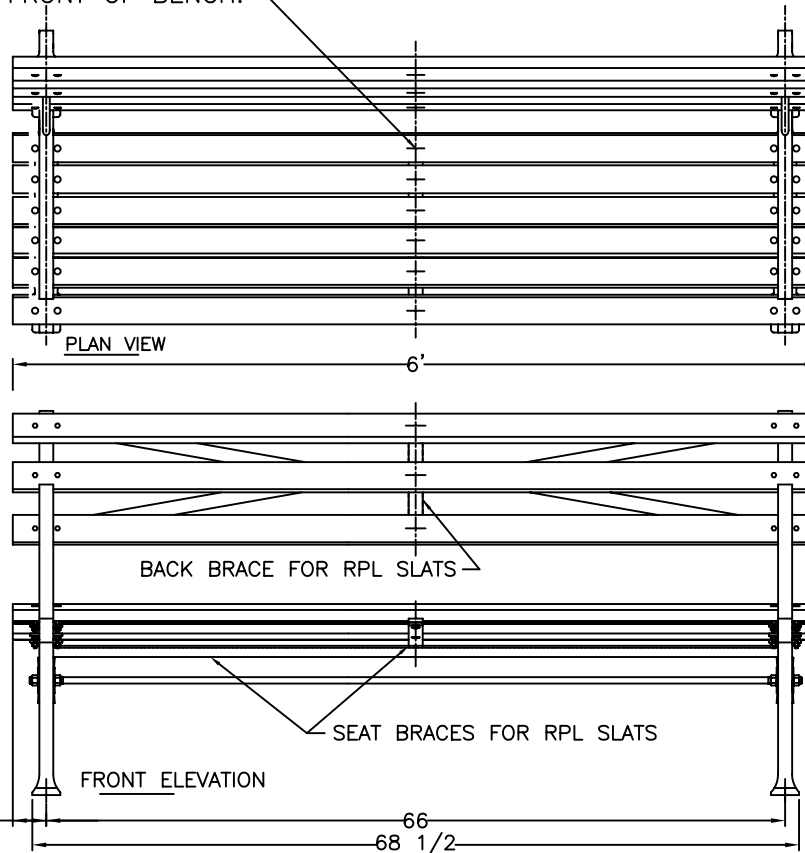


NOTE: THIS DRAWING VARIES FROM STANDARD IN THAT THE DISTANCE FROM THE EDGE OF THE SLATS TO THE CENTER OF THE LEG IS 3 INCHES.



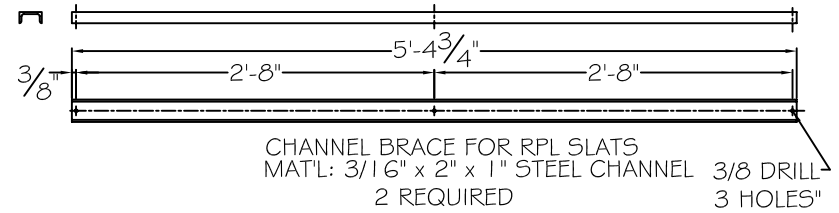
6 FOOT BENCH LENGTH OF AVAILABLE BENCHES: 4', 5', 6', 8' BENCHES 8' LONG HAVE 3 LEGS

WHEN USED, ANCHOR BOLTS ARE TO BE INSTALLED IN EACH FOOT OF EACH LEG.

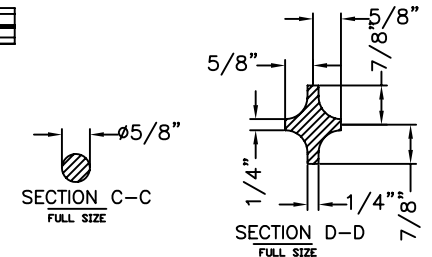
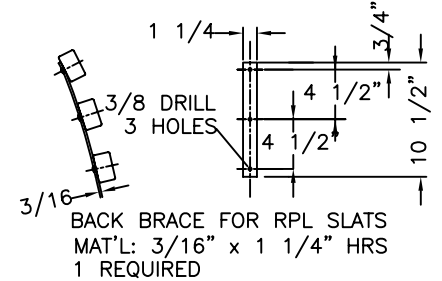
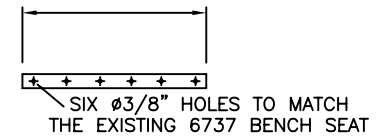


COLOR: RPL _____ CI & STEEL: BLACK

MATERIALS:
 X-BRACING: 3/16" X 1 1/4" HOT ROLLED STEEL
 BENCH LEGS: CAST DUCTILE IRON
 BENCH SLATS: RECYCLED PLASTIC LUMBER
 SMALL FASTENERS (CARRIAGE BOLTS, NUTS AND WASHERS) STAINLESS STEEL
 TIE ROD: 5/8" DIA HOT ROLLED STEEL WITH 5/8 - 11 CUT THREADS & STEEL HEX NUTS
 RPL BRACES: 3/16" & 3/8" X 1 1/4" HRS
 CHANNEL: 3/16" X 1" X 2" STEEL



HORIZ MEAS 16 7/16" TRUE MEAS 12-4 3/4"



KENNETH LYNCH & SONS
 114 WILLENBROCK ROAD OXFORD, CT 06478
 PHONE 203-264-2831 FAX 203-264-2833

6737 WORLDS FAIR BENCH		
Scale FAX	Date 2/17/12	Drawn S.L.A.
RECYCLED PLASTIC SLATS		6' LONG
MAT'L: AS NOTED	CONTRACT #	
#6737-6-RPL-FX-2012 NYC		