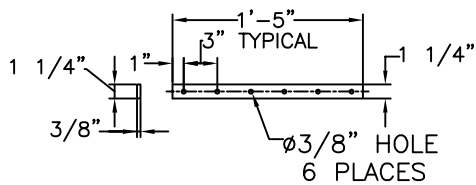
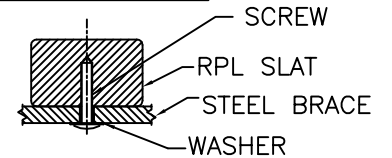
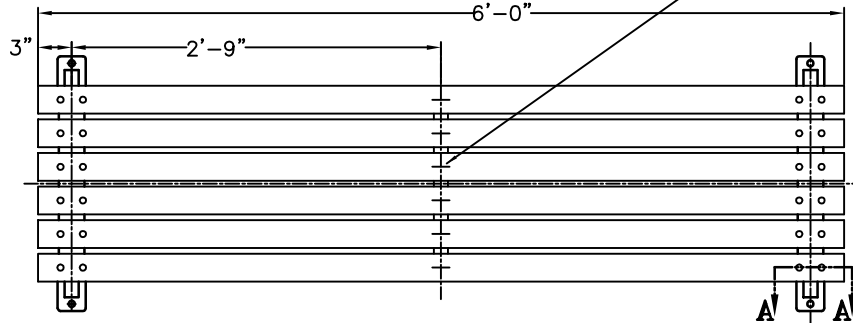


RPL IS HELD TO THE BRACES BY TAPERED SCREWS WHICH ARE DRIVEN INTO THE RPL FROM THE BOTTOM AND ARE NOT VISIBLE FROM ABOVE. McMASTER #95638A317 PIN-IN-TORX TAMPER RESIST SHEET METAL SCREW 18-8 STAINLESS STEEL, BUTTON HEAD, NO 14 SIZE, 1-1/2" LENGTH NOT VISIBLE FROM TOP OF BENCH.

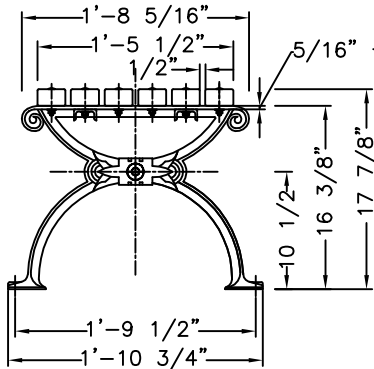
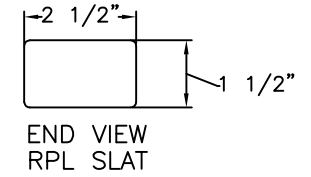
SECTION A-A - LEG & SLAT



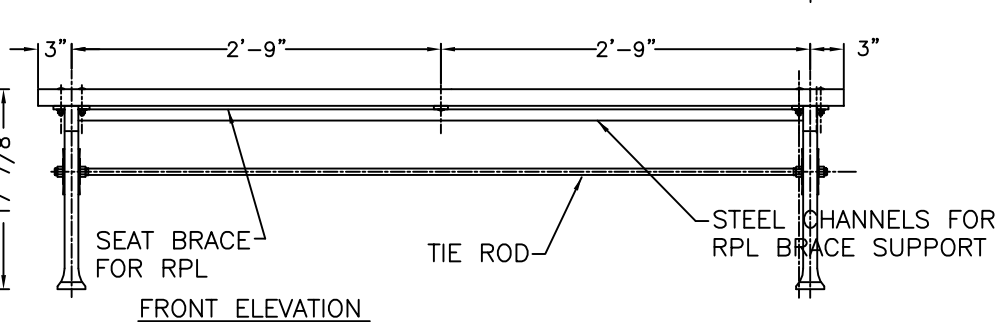
SEAT BRACE FOR RPL  
3/8" X 1 1/4" X  
17" LG HRS. 1 PIECES



SECTION VIEW OF RPL SLAT  
CROSS BRACE PLACED UNDER  
SLAT AND OVER THE CHANNEL



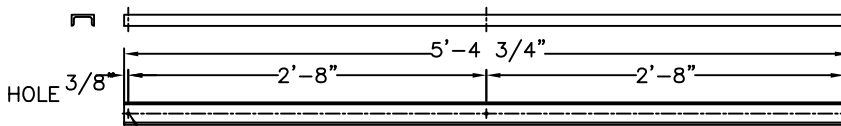
SIDE ELEVATION



FRONT ELEVATION



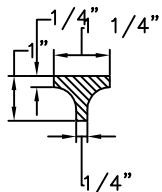
BOTTOM VIEW OF FEET



LONG CHANNEL BRACE FOR RPL SLATS  
MAT'L: 3/16" x 2" x 1" STEEL CHANNEL  
2 REQUIRED

3/8 DRILL  
3 HOLES"

NOTE: THIS DRAWING VARIES FROM STANDARD IN THAT THE DISTANCE FROM THE EDGE OF THE SLATS TO THE CENTER OF THE LEG IS 3 INCHES.



TYPICAL SECTION

WHEN USED, ANCHOR BOLTS ARE TO BE INSTALLED IN EACH FOOT OF EACH LEG.

COLOR:

RPL  
CI & STEEL: POWDER COAT BLACK

MATERIALS:

BENCH LEGS: CAST DUCTILE IRON  
SEAT SLATS: RECYCLED PLASTIC LUMBER (RPL)  
SMALL FASTENERS (CARRIAGE BOLTS, NUTS AND WASHERS) STAINLESS STEEL  
TIE ROD: 5/8" DIA HOT ROLLED STEEL WITH 5/8 - 11 CUT THREADS & STEEL HEX NUTS  
CROSS BRACE: 3/8" x 1 1/4" HOT ROLLED STEEL  
LONG BRACE: 3/16" x 1" x 2" STEEL CHANNEL

**KENNETH LYNCH & SONS**

114 WILLENBROCK ROAD OXFORD, CT 06478  
PHONE 203-264-2831 FAX 203-264-2833

6736E WORLDS FAIR BACKLESS BENCH		
Scale: FAX	Date 8/12/16	Drawn S.L.A.
RECYCLED PLASTIC SLATS		6' LONG
2 LEGS	CONTRACT #	
MAT'L: AS NOTED	#6736E-6-RPL-2-FX-2012 NYC	