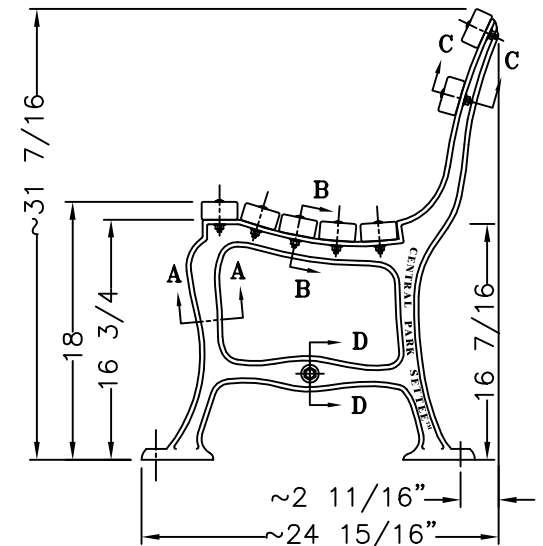


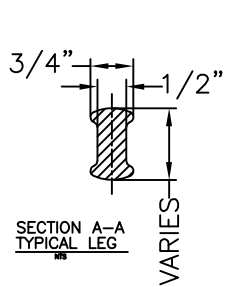
FRONT ELEVATION

8 FOOT BENCH

LENGTH OF AVAILABLE BENCHES: 4', 5', 6', 8'  
BENCHES OF LESS THAN 8' LENGTH HAVE 2 LEGS

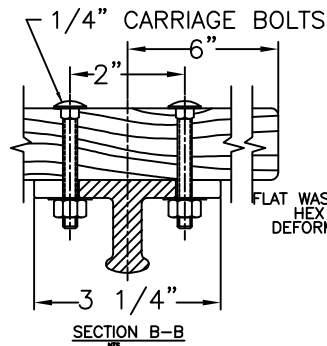


SIDE ELEVATION



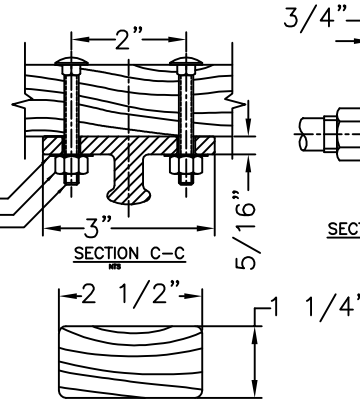
SECTION A-A  
TYPICAL LEG

VARIES



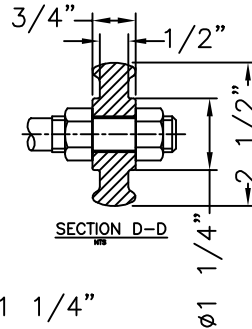
SECTION B-B

FLAT WASHER  
HEX NUT  
DEFORM END



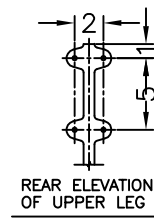
SECTION C-C

END VIEW OF WOOD SLAT  
WHITE OAK

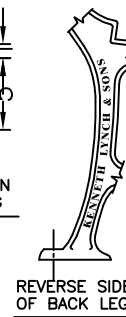


SECTION D-D

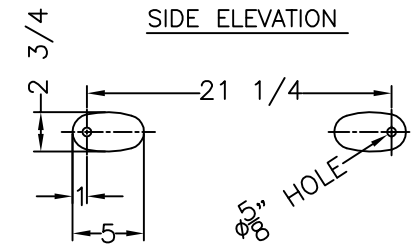
Ø 1 1/4"



REAR ELEVATION  
OF UPPER LEG



REVERSE SIDE  
OF BACK LEG



BOTTOM VIEW  
OF FEET

**COLORS**

BENCH LEGS: BLACK  
WOOD SLATS: CENTRAL PARK GREEN

**MATERIALS:**

BENCH LEGS: CAST DUCTILE IRON  
WOOD SLATS: WHITE OAK  
SMALL FASTENERS (CARRIAGE BOLTS, NUTS  
& WASHERS) STAINLESS STEEL  
TIE ROD: 5/8" DIA HOT ROLLED STEEL WITH  
5/8 - 11 CUT THREADS  
& GALVANIZED STEEL HEX NUTS

**KENNETH LYNCH & SONS**  
114 WILLENBROCK RD. OXFORD, CT 06478  
203-264-2831 FAX 203-264-2833

Revised:	Dr. By:	#6735 8' CENTRAL PARK SETTEE	
4/29/15	S.L.A.	Scale 3'=1'-0"	Date 3/19/01
		Drawn S.L.A.	
		8' LONG BENCH	
		MAT: SEE NOTES	#6735-8-WO FX