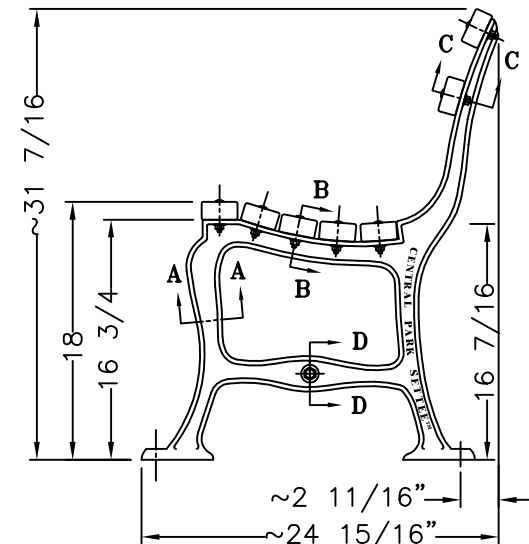


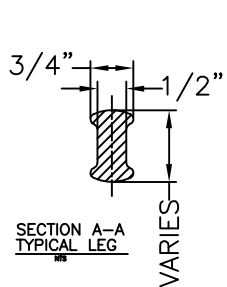
FRONT ELEVATION

8 FOOT BENCH

LENGTH OF AVAILABLE BENCHES: 4', 5', 6', 8"
BENCHES OF LESS THAN 8' LENGTH HAVE 2 LEGS

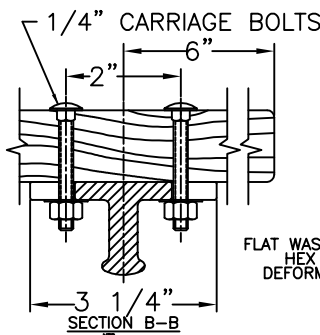


SIDE ELEVATION



SECTION A-A
TYPICAL LEG

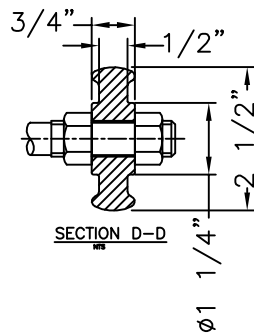
VARIES



SECTION B-B

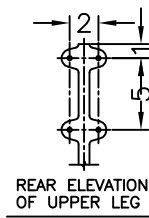
FLAT WASHER
HEX NUT
DEFORM END

SECTION C-C

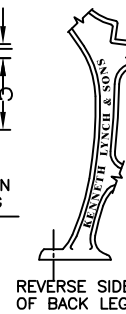


SECTION D-D

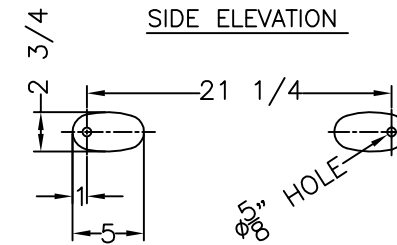
Ø 1 1/4"



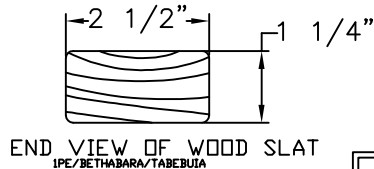
REAR ELEVATION
OF UPPER LEG



REVERSE SIDE
OF BACK LEG



BOTTOM VIEW
OF FEET



END VIEW OF WOOD SLAT
IPE/BETHABARA/TABEUUA

MATERIALS:

BENCH LEGS: CAST DUCTILE IRON
WOOD SLATS: IPE (BETHABARA)/TABEUUA
SMALL FASTENERS (CARRIAGE BOLTS, NUTS
& WASHERS) STAINLESS STEEL
TIE ROD: 5/8" DIA HOT ROLLED STEEL WITH
5/8 - 11 CUT THREADS
& GALVANIZED STEEL HEX NUTS

KENNETH LYNCH & SONS

114 WILLENBROCK RD. OXFORD, CT 06478
203-264-2831 FAX 203-264-2833

Revised:	Dr. By:	#6735 8' CENTRAL PARK SETTEE	
4/29/15	S.L.A.	Scale 3'=1'-0"	Date 3/19/01
		Drawn S.L.A.	
		8' LONG BENCH	
		MAT: SEE NOTES	#6735-8FX