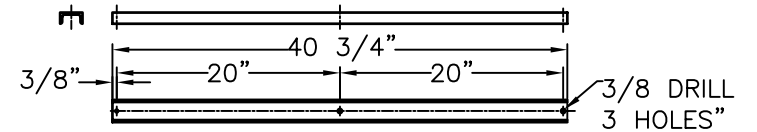
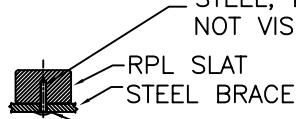
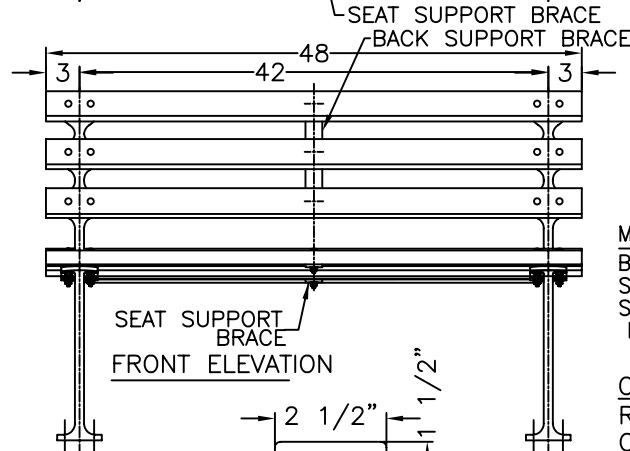
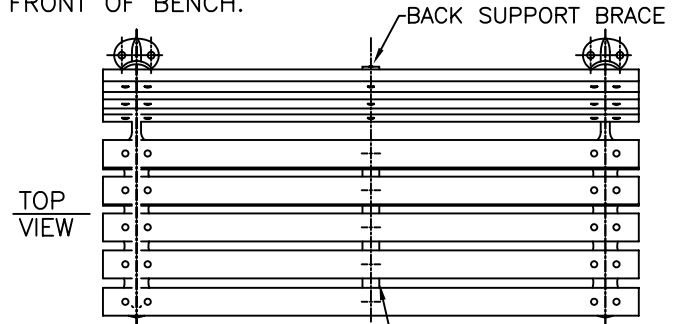
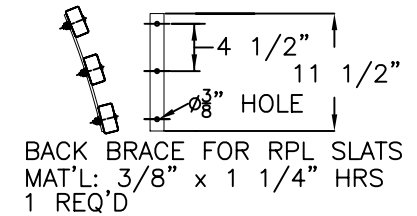
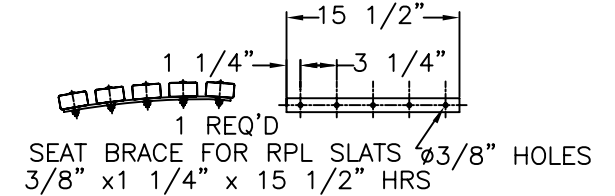


RPL IS HELD TO THE BRACES BY TAPERED SCREWS WHICH ARE DRIVEN INTO THE RPL FROM THE BACK AND BOTTOM AND ARE NOT VISIBLE FROM ABOVE. McMASTER #95638A317 PIN-IN-TORX TAMPER RESIST SHEET METAL SCREW 18-8 STAINLESS STEEL, BUTTON HEAD, NO 14 SIZE, 1-1/2" LENGTH NOT VISIBLE FROM FRONT OF BENCH.

SECTION VIEW OF RPL BENCH SLAT WITH CROSS BRACE & SCREW - USED ON SEAT & BACK BRACES FROM BOTTOM, & & BACK OF BRACES - 16 REQ'D



CHANNEL BRACE FOR RPL SLATS
MAT'L: 3/16" x 2" x 1" STEEL CHANNEL
3 REQUIRED



NOTE: THIS DRAWING VARIES FROM STANDARD IN THAT THE DISTANCE FROM THE EDGE OF THE SLATS TO THE CENTER OF THE LEG IS

MATERIALS:

BENCH LEGS: CAST DUCTILE IRON
SLATS: RECYCLED PLASTIC LUMBER (RPL)
SMALL FASTENERS (CARRIAGE BOLTS, NUTS & WASHERS): STAINLESS STEEL

COLOR:

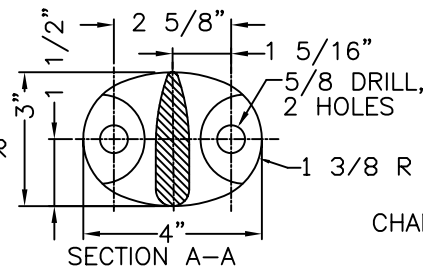
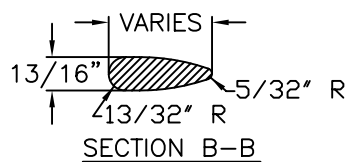
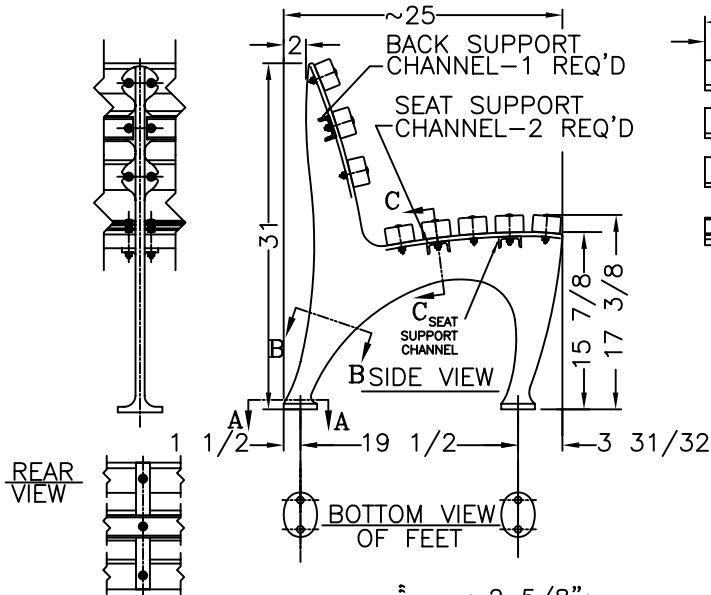
RPL _____
CI & STEEL: GRAY ALUMINUM 9007

KENNETH LYNCH & SONS

114 WILLENBROCK ROAD OXFORD, CT 06478
PHONE 203-264-2831 FAX 203-264-2833

6733 1964 WORLDS FAIR BENCH

Scale FAX	Date 1/2/12	Drawn S.L.A.
RECYCLED PLASTIC SLATS		4' LONG
MAT'L: AS NOTED	CONTRACT #	
#6733-4-RPL-FX-2012 NYC		



END VIEW OF RPL SLAT

