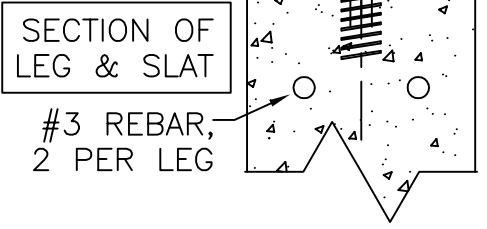


LENGTH OF BENCH	CL TO CL OF LEGS
8 FEET	3 FEET 6 INCHES
7 FEET	6 FEET
6 FEET	5 FEET
5 FEET	4 FEET
4 FEET	3 FEET

NOTE: BENCHES OF LESS THAN 8 FEET IN LENGTH HAVE TWO LEGS



KENNETH LYNCH & SONS
 114 WILLENBROCK ROAD
 OXFORD, CT 06478
 203-264-2831
 FAX 203-264-2833

Revised: 2/25/16	Dr. By: S.L.A.	#3238 BENCH - TYPE "D"	
		Scale: 3"=1'-0"	Date: 9/15/10
		Drawn: S.L.A.	
		SURFACE MOUNT BENCH	
		MAT'L: CAST STONE	#3238D FX