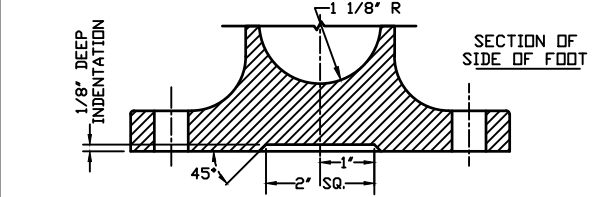
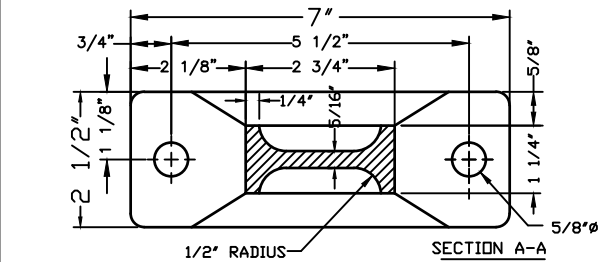
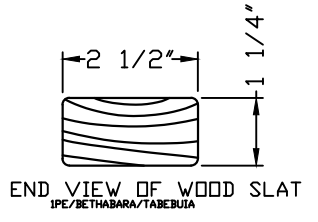
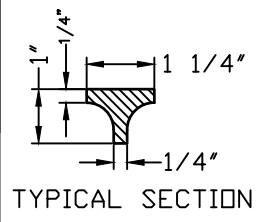
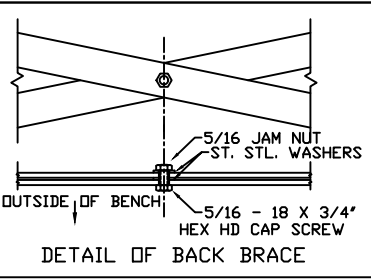


**8 FOOT BENCH**

LENGTH OF AVAILABLE BENCHES: 4', 5', 6', 8'

BENCHES OF LESS THAN 8' LENGTH HAVE 2 LEGS



**MATERIALS:**

X-BRACING: 3/16" X 1 1/4" H. R. STEEL

BENCH LEGS: CAST DUCTILE IRON

WOOD SLATS: IPE (BETHABARA)/TABEUBIA

SMALL FASTENERS (CARRIAGE BOLTS, NUTS & WASHERS) STAINLESS STEEL

TIE ROD: 5/8" DIA HOT ROLLED STEEL WITH 5/8 - 11 CUT THREADS & STEEL HEX NUTS

**KENNETH LYNCH & SONS**

114 WILLENBROCK ROAD OXFORD, CT 06478  
PHONE 203-264-2831 FAX 203-264-2833

**6737-E WORLDS FAIR BENCH**

Scale: FAX	Date 9/14/10	Drawn S.L.A.
SINGLE FOOT STYLE WITH ANCHOR ASSEMBLY		ARMLESS
MAT: SEE NOTES		#6737E-8+A WEB