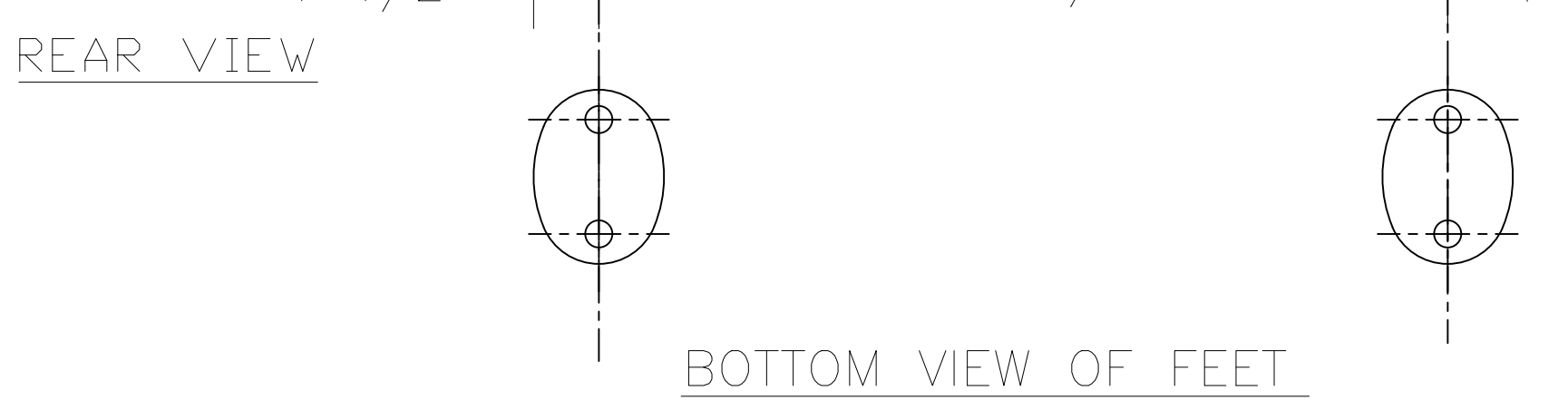


FRONT ELEVATION



- NOTES:
- 1) THIS IS A GENERAL DRAWING OF THIS BENCH.
 - 2) BENCHES 8' LONG WILL HAVE THREE LEGS.
 - 3) GALVANIZE IS THE NORMAL FINISH ON THE DUCTILE IRON LEGS.
A BLACK POWDER COAT FINISH MAY BE SPECIFIED.
 - 4) THE BENCHES WILL BE MADE ACCORDING TO SPECIFICATIONS.

MATERIALS:
 BENCH LEGS: CAST DUCTILE IRON
 WOOD SLATS: IPE (BETHABARA)/TABEUIA
 SMALL FASTENERS (CARRIAGE BOLTS, NUTS AND WASHERS): STAINLESS STEEL

©2010 Kenneth Lynch & Sons
 Oxford CT 06478

KENNETH LYNCH & SONS
 114 WILLENBROCK ROAD
 OXFORD, CT 06478
 PHONE 203-264-2831
 FAX 203-264-2833

#6733	1964 FLUSHING MEADOWS CORONA PARK BENCH
Scale: 3'=1'-0"	Date: 11/18/10
WITH SEPARATE ARM	4' BENCH
MAT: SEE NOTES	#6733B-4