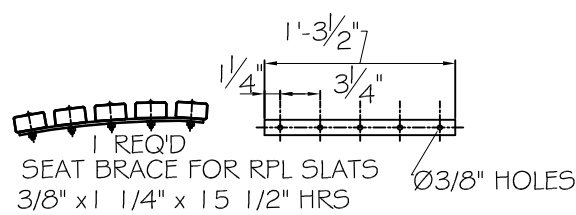
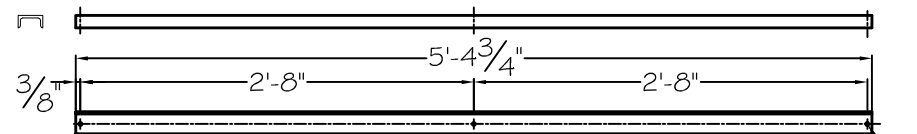


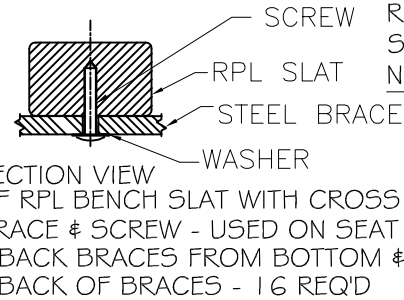
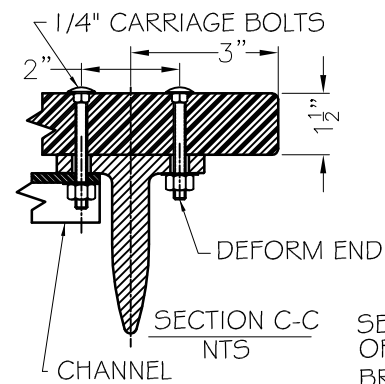
BACK BRACE FOR RPL SLATS  
MAT'L: 3/16" x 1 1/4" HRS 1 REQ'D



SEAT BRACE FOR RPL SLATS  
3/8" x 1 1/4" x 15 1/2" HRS

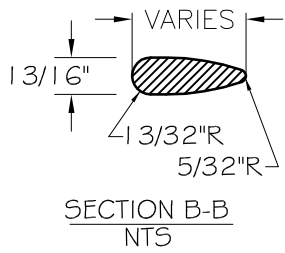
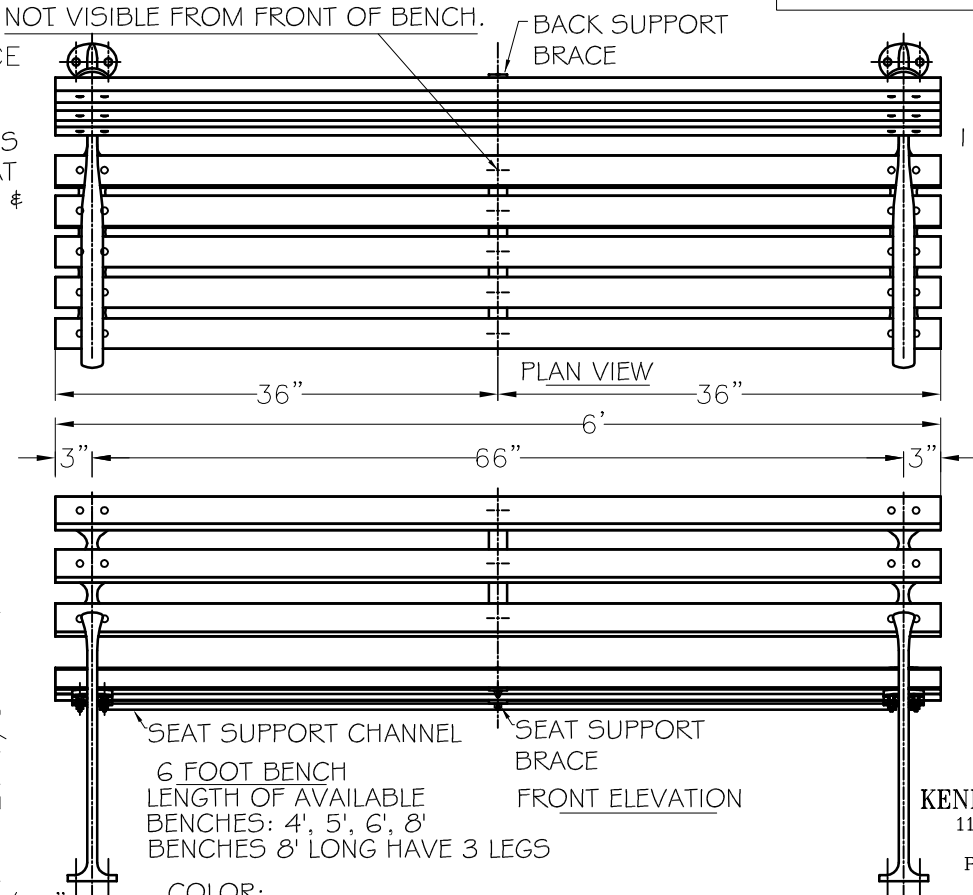
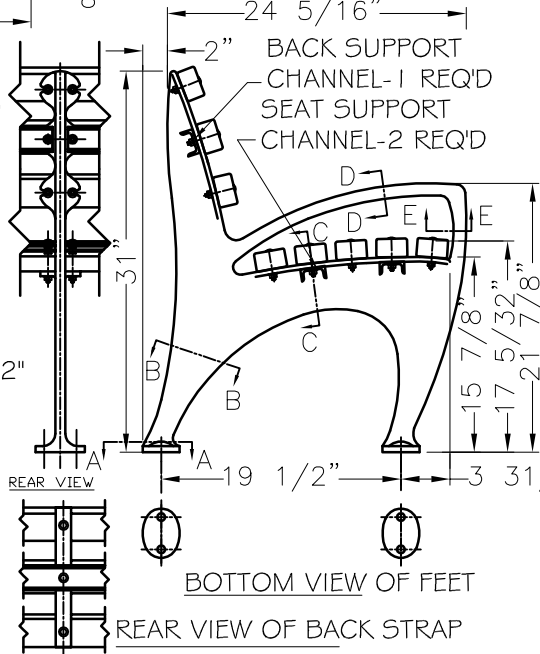
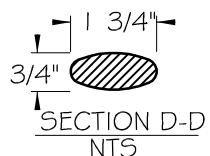
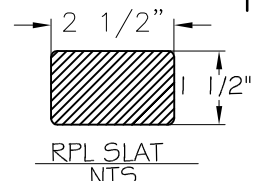
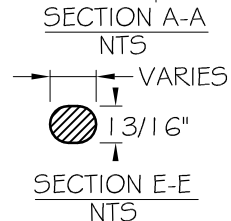
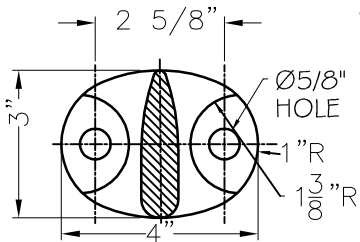


CHANNEL BRACE FOR RPL SLATS  
MAT'L: 3/16" x 2" x 1" STEEL CHANNEL 3/8 DRILL 3 HOLES"



RPL IS HELD TO THE BRACES BY TAPERED SCREWS WHICH ARE DRIVEN INTO THE RPL FROM THE BACK AND BOTTOM AND ARE NOT VISIBLE FROM ABOVE. McMASTER #95638A3 17 PIN-IN-TORX TAMPER RESIST SHEET METAL SCREW 18-8 STAINLESS STEEL, BUTTON HEAD, NO 14 SIZE, 1-1/2" LENGTH NOT VISIBLE FROM FRONT OF BENCH.

NOTE: THIS DRAWING VARIES FROM STANDARD IN THAT THE DISTANCE FROM THE EDGE OF THE SLATS TO THE CENTER OF THE LEG IS 3 INCHES.



COLOR: CI & STEEL: GRAY ALUMINUM 9007  
MATERIALS:  
BENCH LEGS: CAST DUCTILE IRON  
RPL BRACES: HRS STRAPS & CHANNEL  
SLATS: RECYCLED PLASTIC LUMBER  
SMALL FASTENERS (CARRIAGE BOLTS, NUTS, WASHERS & SCREWS) = STAINLESS STEEL

KENNETH LYNCH & SONS  
114 WILLENBROCK ROAD  
OXFORD, CT 06478  
PHONE 203-264-2831  
FAX 203-264-2833

6733A 1964 WORLDS FAIR BENCH		
Scale FAX	Date 2/14/12	Drawn S.L.A.
RECYCLED PLASTIC SLATS		6' LONG
CONTRACT #		
#6733A-6-RPL-3-FX-2012 NYC		