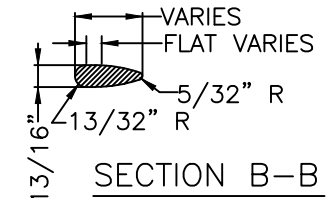
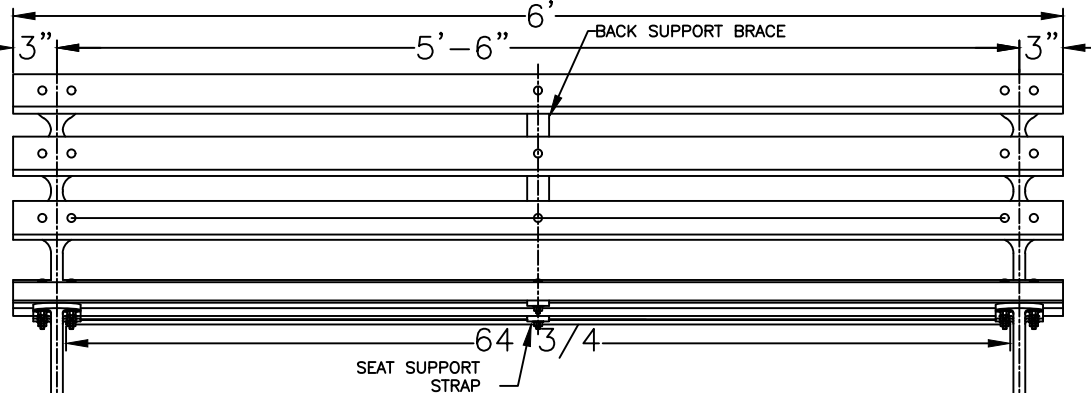
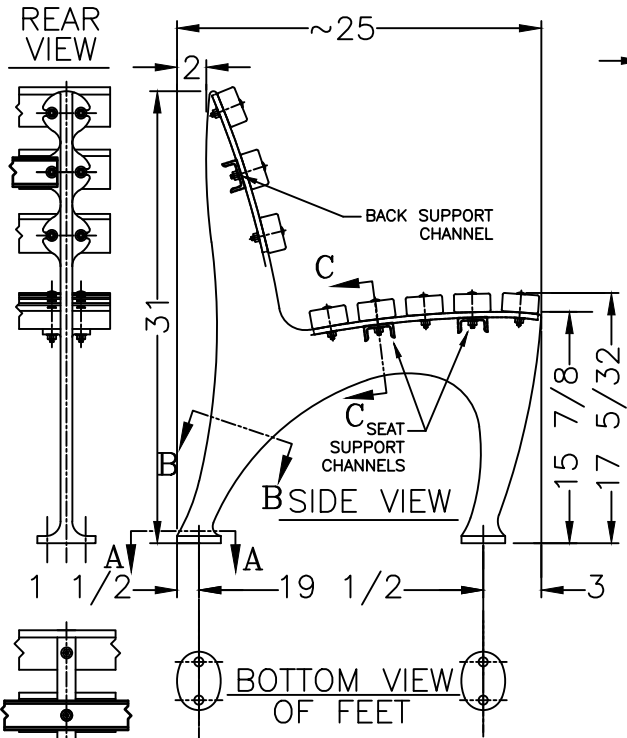
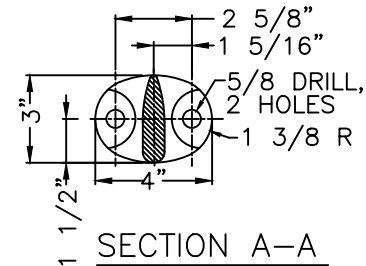
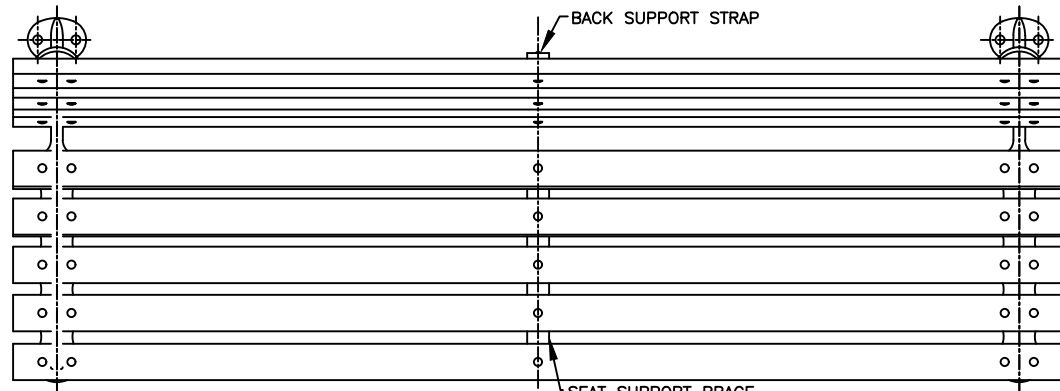


TOP VIEW



FRONT ELEVATION

END VIEW OF RPL SLAT

- BACK SUPPORT STRAP 1 REQ'D  
3/8" x 1 1/4" x 11 1/4" HRS
- SEAT SUPPORT STRAP 1 REQ'D.  
3/8" x 1 1/4" x 15 1/2" HRS
- SEAT & BACK SUPPORT CHANNEL 3 REQ'D  
2"x1"x 3/16"x 64 3/4" STEEL

**KENNETH LYNCH & SONS**

114 WILLENBROCK ROAD OXFORD CT 06478  
203-264-2831 FAX 203-264-2833

**MATERIALS:**

BENCH LEGS: CAST DUCTILE IRON  
SLATS: REPROCESSED PLASTIC LUMBER (RPL)  
SMALL FASTENERS (CARRIAGE BOLTS, NUTS & WASHERS): STAINLESS STEEL

**FINISH ON LEGS & BRACES:**

RAL 9007 GRAY ALUMINUM SEMI-GLOSS  
OR APPROVED EQUAL.

BENCHES OF 8' IN LENGTH  
HAVE 3 LEGS

REAR VIEW  
BACK STRAP

Revised:	Drawn By:
5/2/11	S.L.A.

6733	1964 FLUSHING MEADOWS CORONA PARK BENCH	
Scale: FAX	Date 10/05/10	Drawn S.L.A.
REPROCESSED PLASTIC SLATS		6' LONG
MAT: SEE NOTES		#6733-6-RPL-FX