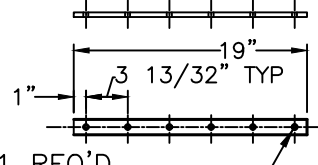


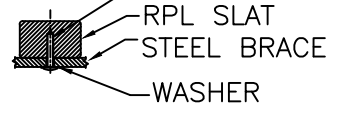
CHANNEL BRACE FOR RPL SLATS
 MAT'L: 3/16" x 2" x 1" STEEL CHANNEL 3/8" DRILL 3 HOLES"
 2 REQUIRED



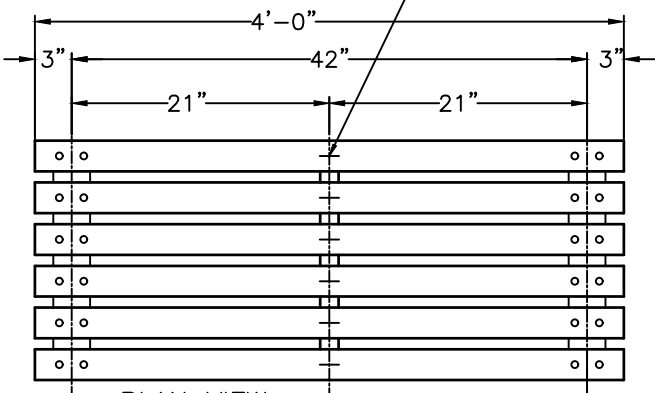
1 REQ'D
 SEAT BRACE FOR RPL SLATS Ø3/8" HOLES
 3/8" x 1 1/4" x 19" HRS

SECTION C-C NTS

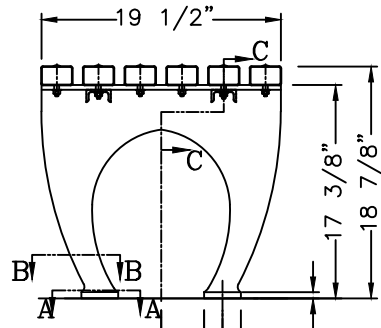
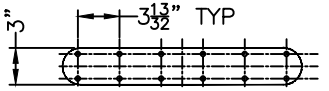
RPL IS HELD TO THE BRACES BY TAPERED SCREWS WHICH ARE DRIVEN INTO THE RPL FROM THE BACK AND BOTTOM AND ARE NOT VISIBLE FROM ABOVE. McMASTER #95638A317 PIN-IN-TORX TAMPER RESIST SHEET METAL SCREW 18-8 STAINLESS STEEL, BUTTON HEAD, NO 14 SIZE, 1-1/2" LENGTH NOT VISIBLE FROM FRONT OF BENCH.



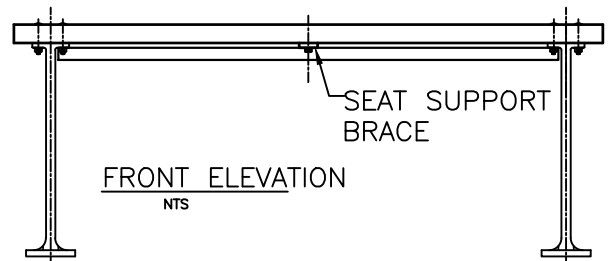
SECTION VIEW RPL BENCH SLAT WITH CROSS BRACE & SCREW - USED ON SEAT BRACES FROM BOTTOM



PLAN VIEW NTS



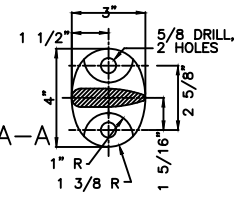
SIDE ELEVATION NTS



FRONT ELEVATION NTS

BOTTOM VIEW OF FEET

SECTION A-A NTS



MATERIALS:
 BENCH LEGS: CAST DUCTILE IRON
 RPL BRACES: 3/8" X 1 1/4" HRS
 3/16" X 1" X 2" STEEL CHANNEL
 SLATS: RECYCLED PLASTIC LUMBER
 SMALL FASTENERS (CARRIAGE BOLTS, NUTS, WASHERS & SCREWS)=STAINLESS STEEL

4 FOOT BENCH
 AVAILABLE BENCH LENGTHS: 4', 5', 6', 8'
 8' BENCHES HAVE 3 LEGS

COLOR:
 RPL _____
 CI & STEEL: GRAY ALUMINUM 9007

KENNETH LYNCH & SONS
 114 WILLENBROCK ROAD OXFORD, CT 06478
 PHONE 203-264-2831 FAX 203-264-2833

6731 1964 WORLDS FAIR BENCH		
Scale FAX	Date 3/9/12	Drawn S.L.A.
RECYCLED PLASTIC SLATS		4' LONG
BACKLESS	CONTRACT #	
#6731-4-RPL-FX-2012 NYC		

NOTE: THIS DRAWING VARIES FROM STANDARD IN THAT THE DISTANCE FROM THE EDGE OF THE SLATS TO THE CENTER OF THE LEG IS 3 INCHES.